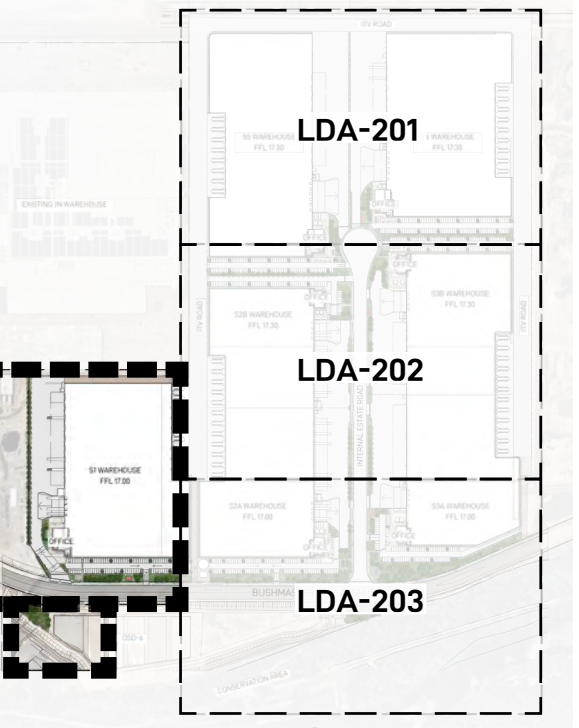




KEY PLAN - NOT TO SCALE



LEGEND

- FFL 17.00 FINISHED FLOOR LEVEL
- RL 16.00 PROPOSED SPOT LEVEL
- SITE BOUNDARY
- LINE OF AWNING ABOVE
- 2100MM HIGH PALISADE METAL PICKET FENCE TO ARCHITECT'S DETAILS
- 2400MM HIGH PVC COATED CHAINMESH FENCE TO ARCHITECT'S DETAILS
- PYLON SIGNAGE
- SUB STATION
- IMT VEHICLE ACCESS ROAD
- PROPOSED MIXED NATIVE UNDERSTOREY PLANTING REFER TO INDICATIVE PLANT PALETTE FOR PLANT SPECIES
- DECOMPOSED GRANITE
- PEDESTRIAN FOOTPATH
- PROPOSED ENDEMIC CUMBERLAND PLAIN WOODLAND TREES AS PER CONDITION B67 SSD 7709 REFER TO INDICATIVE PLANT PALETTE FOR TREE SPECIES
- 1 PROPOSED 2.5M WIDE LANDSCAPED BAY EVERY 4-8 CAR SPACES TO PROVIDE SHADE AS PER B68(C) SSD 7709
- 2 PROPOSED CANOPY TREE PLANTING WITH MINIMUM DENSITY RATE OF 1 CANOPY TREE PER 30M² OF TOTAL LANDSCAPE AREA AS PER CONDITION B68(D) SSD 7709
- 3 PROPOSED MEANDERING PATHWAY FOR RECREATIONAL & VARIED WALKING EXPERIENCE AS PER CONDITION B60 SSD 7709
- 4 PROPOSED PLANTING AREA CONSISTING OF PLANT SPECIES THAT MATCHES THE OVERALL PREVIOUS STREETScape PLANTING SCHEME. REFER TO INDICATIVE PLANT PALETTE FOR OSD 6 PLANT SPECIES.

LANDSCAPE ARCHITECT

GROUND iNK

SUITE 201, 75 ARCHER ST, CHATSWOOD NSW 2067 PH. (02) 9411 3279
WWW.GROUNDINK.COM.AU ABN 55 163 025 456 ACN 163 025 456
© GROUND INK PTY LTD THIS DESIGN AND DRAWING IS PROTECTED BY COPYRIGHT.

CLIENT

LOGOS

1 MACQUARIE PLACE, SYDNEY NSW 2000
PH. (02) 8197 3900
WWW.LOGOSPROPERTY.COM

ARCHITECT

watson young

LEVEL 11/15 BLUE ST, NORTH SYDNEY NSW 2060
PH. (02) 8329 0730
WWW.WATSONYOUNG.COM.AU

NOTE
VERIFY ALL DIMENSIONS ON SITE BEFORE COMMENCING WORK. REPORT ALL DISCREPANCIES TO LANDSCAPE ARCHITECT PRIOR TO CONSTRUCTION. FIGURED DIMENSIONS TO BE TAKEN IN PREFERENCE TO SCALED DRAWINGS. ALL WORK IS TO CONFORM TO RELEVANT AUSTRALIAN STANDARDS AND OTHER CODES AS APPLICABLE. LOCATION OF UNDERGROUND SERVICES TO BE PROVEN ON SITE AND PROTECTED IF NECESSARY PRIOR TO CONSTRUCTION. DIAL BEFORE YOU DIG. PLANT SPECIES AND QUANTITIES SHOWN ARE INDICATIVE ONLY AND ARE SUBJECT TO CHANGE BASED ON FUTURE PROJECT REQUIREMENTS.

ISSUE	DATE	DESCRIPTION	DRAWN	CHECKED
A	04.08.23	DRAFT ISSUE FOR COORDINATION	MK	RL
B	07.09.23	ISSUE FOR COORDINATION	MK	RL
C	18.10.23	ISSUE FOR COORDINATION	MK	RL

DRAWING TITLE

DETAILED LANDSCAPE PLAN
INSET 4

DATE	JOB NUMBER	DRAWN	CHECKED	DRAWING NUMBER
18-SEP-23	20230629	MK	RL	LDA-204

PROJECT
MOOREBANK MPW SOUTH UDDR
MOOREBANK INTERMODAL PRECINCT, NSW 2170

SCALE 1:500 / A1

0 5 10 15M

REV
C

TREES



SHRUBS



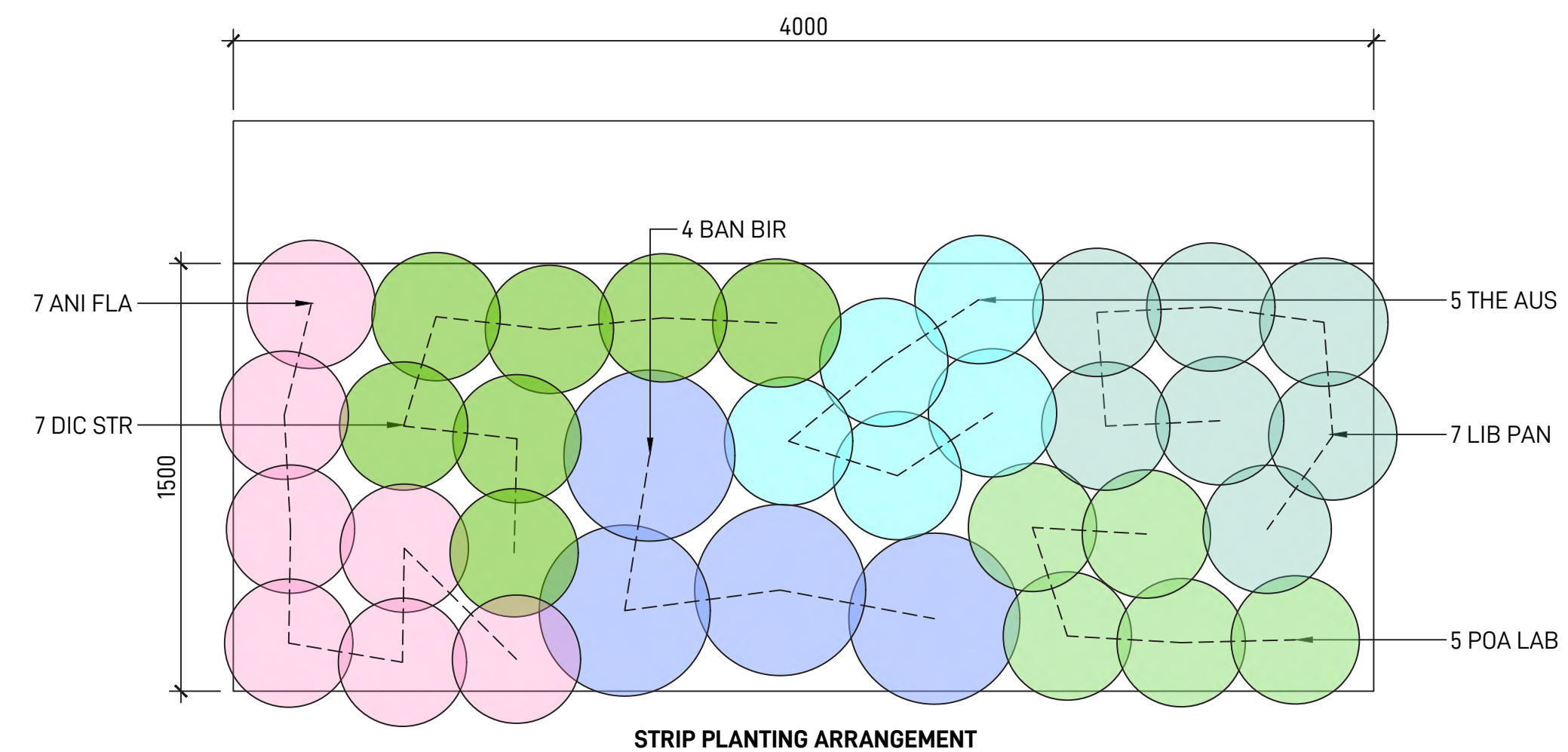
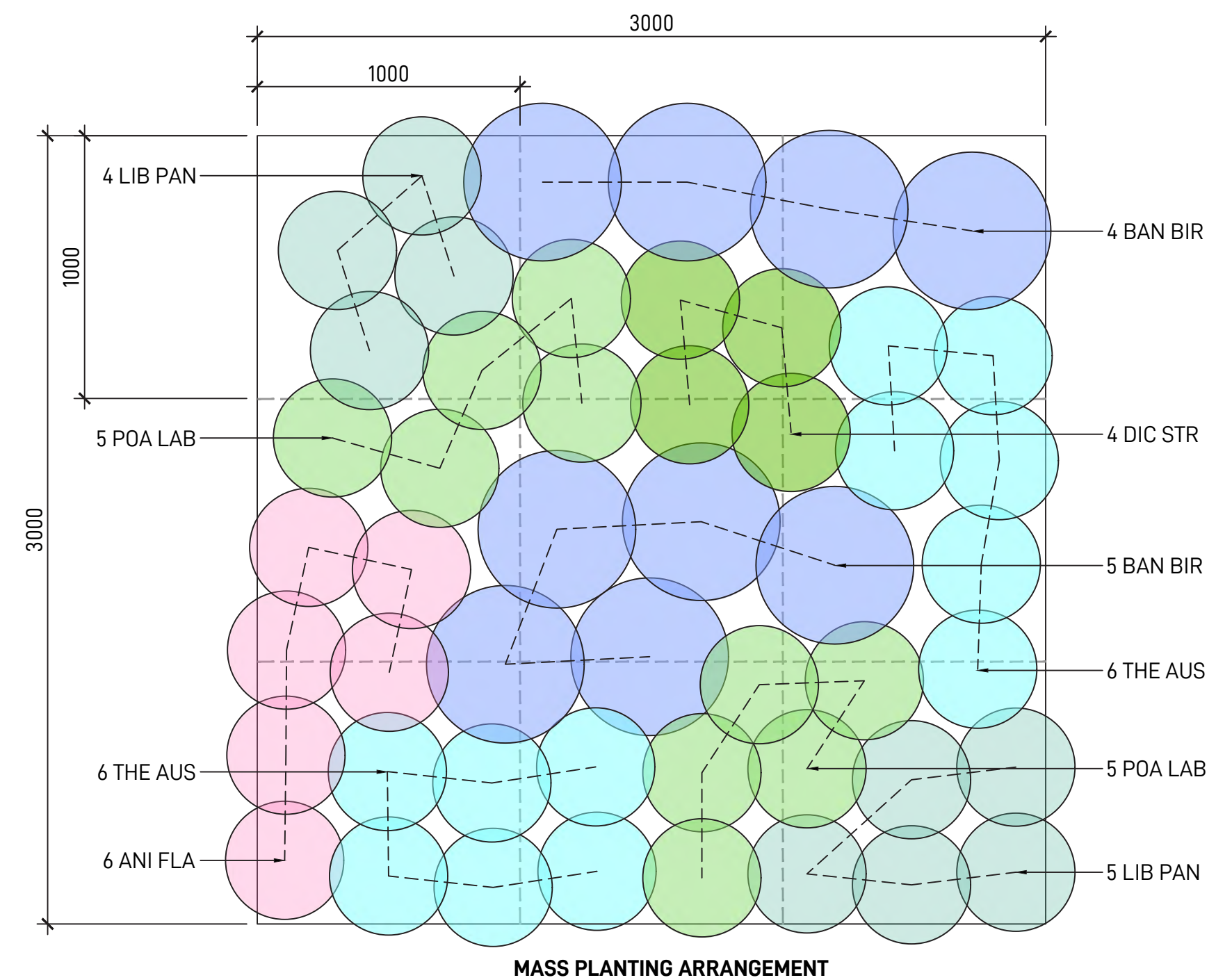
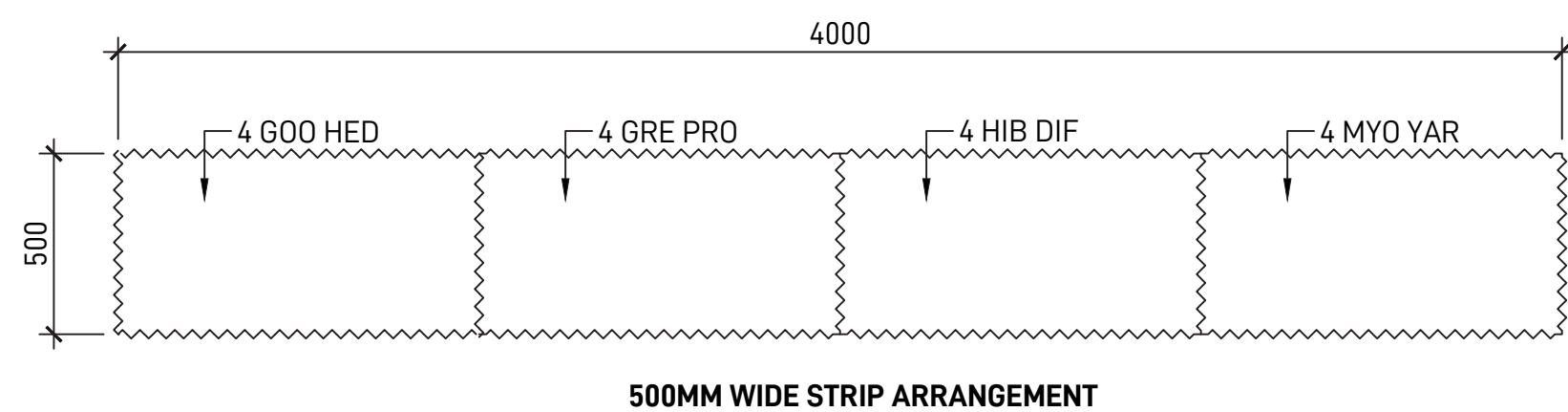
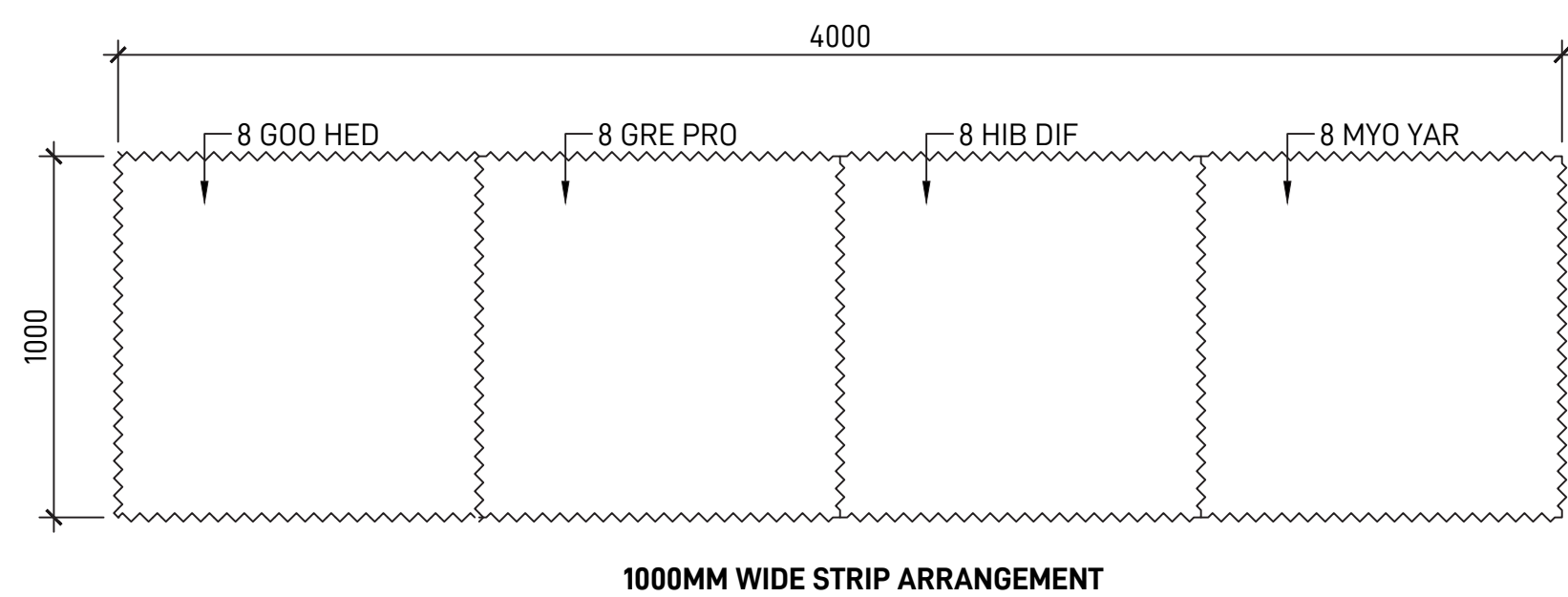
GRASSES & GROUNDCOVERS



PLANT SCHEDULE

BOTANICAL NAME	NATIVE	HEIGHT	POT SIZE	SPACING
TREES				
ANGOPHORA BAKERI (NARROW-LEAVED APPLE)	✓	10-15M	100L	6M CENTRES
ANGOPHORA FLORIBUNDA (ROUGH-BARKED APPLE)	✓	15-20M	100L	6M CENTRES
CALLISTEMON SALIGNUS (WILLOW BOTTLEBRUSH)	✓	6-8M	100L	4M CENTRES
CORYMBIA MACULATA (SPOTTED GUM)	✓	15-20M	100L	6M CENTRES
EUCALYPTUS BAUERIANA (BLUE BOX)	✓	10-12M	100L	6M CENTRES
EUCALYPTUS MOLUCCANA (GREY BOX)	✓	15-20M	100L	6M CENTRES
EUCALYPTUS PUNCTATA (GREY GUM)	✓	10-15M	100L	6M CENTRES
EUCALYPTUS TERETICORNIS (FOREST RED GUM)	✓	15-25M	100L	6M CENTRES
MELALEUCA DECORA (WHITE FEATHER HONEYMYRTLE)	✓	7-10M	100L	4M CENTRES
'WATERHOUSEA 'GREEN AVENUE'	✓	8-10M	100L	AS SHOWN
SHRUBS				
BANKSIA 'BIRTHDAY CANDLES'	✓	1M	300MM	800MM CENTRES
CALLISTEMON 'ENDEAVOUR'	✓	2M	300MM	800MM CENTRES
CALLISTEMON LINEARIS (NARROW-LEAVED BOTTLEBRUSH)	✓	1.5-2M	300MM	800MM CENTRES
CALLISTEMON 'RED ALERT'	✓	1-1.5M	300MM	800MM CENTRES
DORYANTHES EXCELSA (GYMEA LILY)	✓	1M	300MM	-
MELALEUCA ERICIFOLIA (SWAMP PAPERBARK)	✓	2-5M	300MM	800MM CENTRES
MELALEUCA NODOSA (PRICKLY LEAVED PAPERBARK)	✓	1-4M	300MM	800MM CENTRES
'WESTRINGIA FRUTICOSA (COAST ROSEMARY)	✓	1.2M	300MM	650MM CENTRES
GRASSES AND GROUNDCOVERS				
ANIGOZANTHOS FLAVIDUS (KANGAROO PAW)	✓	0.5M	150MM	5 / SQM
AUSTRODANTHONIA RACEMOSA (SLENDER WALLABY GRASS)	✓	0.6M	150MM	5 / SQM
CHRYSOCEPHALUM APICULATUM (YELLOW BUTTONS)	✓	0.4M	150MM	5 / SQM
DIANELLA CAERULEA (BLUE FLAX LILY)	✓	0.8M	150MM	5 / SQM
DIANELLA LONGIFOLIA (BLUE FLAX LILY)	✓	0.8M	150MM	5 / SQM
DICHONDRA REPENS (KIDNEY WEED)	✓	0.3M	150MM	5 / SQM
DICHOPOGON STRICTUS (CHOCOLATE LILY)	✓	0.8M	150MM	6 / SQM
GOODENIA HEDERACEA (FOREST GOODENIA)	✓	0.8M	150MM	5 / SQM
GREVILLEA 'PROSTRATE GOLD'	✓	0.3M	150MM	4 / SQM
HIBBERTIA DIFFUSA (WEDGE GUINEA FLOWER)	✓	0.3M	150MM	5 / SQM
LIBERTIA PANICULATA (GRASS FLAG)	✓	0.6M	150MM	6 / SQM
LOMANDRA LONGIFOLIA (SPINY-HEAD MAT RUSH)	✓	1M	150MM	4 / SQM
LOMANDRA HYSTRIX (SPINY-HEAD MAT RUSH)	✓	1M	150MM	4 / SQM
MICROLAENA STIPOIDES (WEEPING GRASS)	✓	0.7M	150MM	7 / SQM
MYOPORUM 'YAREENA'	✓	0.3M	150MM	4 / SQM
POA LABILLARDIERI (TUSOCK GRASS)	✓	1M	150MM	6 / SQM
'THEMEDA AUSTRALIS (KANGAROO GRASS)	✓	0.5M	150MM	6 / SQM
WAHLENBERGIA GRACILIS (AUSTRALIAN BLUEBEL)	✓	0.8M	150MM	5 / SQM
OSD 6 PLANTING				
ANGOPHORA SUBVELUTINA (BROAD-LEAVED APPLE)	✓	20M	100L	6M CENTRES
EUCALYPTUS AMPLIFOLIA (CABBAGE GUM)	✓	30M	100L	6M CENTRES
EUCALYPTUS CREBRA (NARROW-LEAVED IRONBARK)	✓	35M	100L	6M CENTRES
EUCALYPTUS EUGENIODES (THIN-LEAVED STRINGYBARK)	✓	30M	100L	6M CENTRES
ARISTIDA RAMOSA (PURPLE WIRE GRASS)	✓	1.2M	150MM	5 / SQM
ARISTIDA VAGANS (THREEAWN SPEARGRASS)	✓	0.8M	150MM	5 / SQM
SORGHUM LEIOCLADUM (WILD SORGHUM)	✓	1M	150MM	5 / SQM

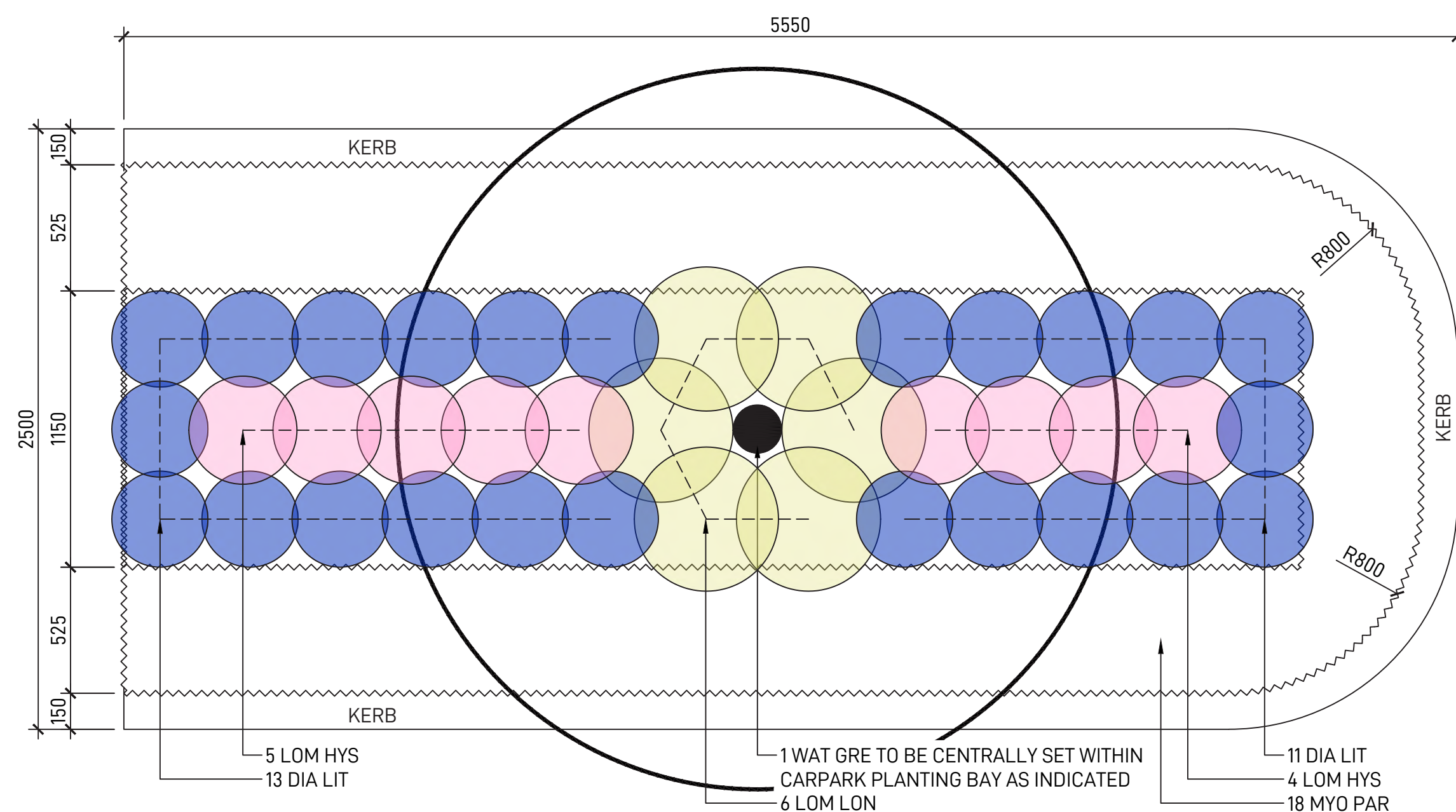
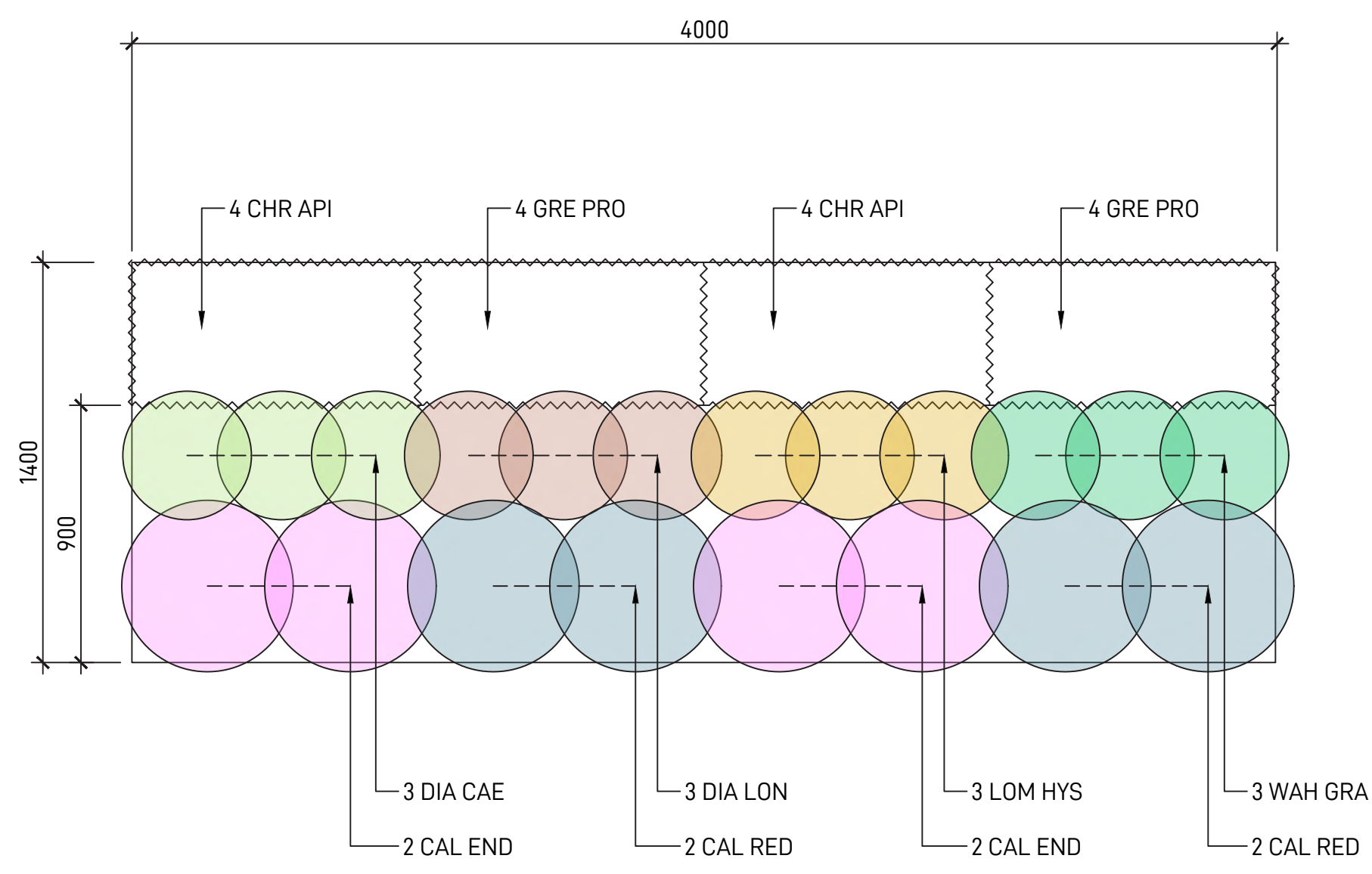
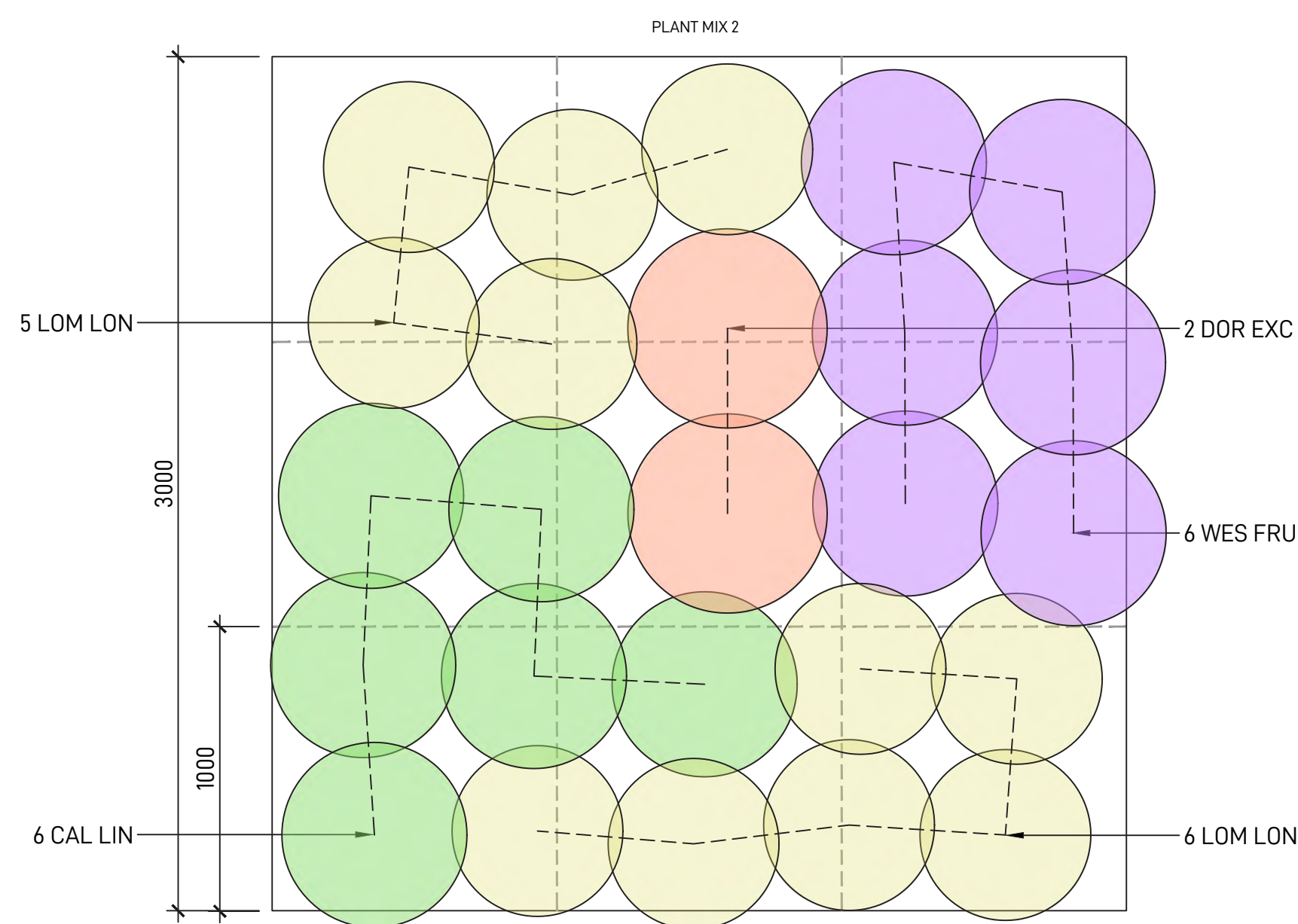
<p>LANDSCAPE ARCHITECT</p> <p>GROUND INK</p> <p>SUITE 201, 75 ARCHER ST, CHATSWOOD NSW 2067 PH. (02) 9411 3279 WWW.GROUNDINK.COM.AU ABN 55 163 025 456 ACN 163 025 456 © GROUND INK PTY LTD THIS DESIGN AND DRAWING IS PROTECTED BY COPYRIGHT.</p>	<p>CLIENT</p> <p>LOGOS</p> <p>1 MACQUARIE PLACE, SYDNEY NSW 2000 PH. (02) 8197 3900 WWW.LOGOSPROPERTY.COM</p>	<p>ARCHITECT</p> <p>watson young</p> <p>LEVEL 11/15 BLUE ST, NORTH SYDNEY NSW 2060 PH. (02) 8329 0730 WWW.WATSONYOUNG.COM.AU</p>	<p>NOTE</p> <p>VERIFY ALL DIMENSIONS ON SITE BEFORE COMMENCING WORK. REPORT ALL DISCREPANCIES TO LANDSCAPE ARCHITECT PRIOR TO CONSTRUCTION. FIGURED DIMENSIONS TO BE TAKEN IN PREFERENCE TO SCALED DRAWINGS. ALL WORK IS TO CONFORM TO RELEVANT AUSTRALIAN STANDARDS AND OTHER CODES AS APPLICABLE. LOCATION OF UNDERGROUND SERVICES TO BE PROVEN ON SITE AND PROTECTED IF NECESSARY PRIOR TO CONSTRUCTION. DIAL BEFORE YOU DIG. PLANT SPECIES AND QUANTITIES SHOWN ARE INDICATIVE ONLY AND ARE SUBJECT TO CHANGE BASED ON FUTURE PROJECT REQUIREMENTS.</p>	<p>ISSUE</p> <p>A 04.08.23 DRAFT ISSUE FOR COORDINATION MK RL</p> <p>B 07.09.23 ISSUE FOR COORDINATION MK RL</p> <p>C 18.10.23 ISSUE FOR COORDINATION MK RL</p>	<p>DATE</p> <p>18-SEP-23</p>	<p>DESCRIPTION</p> <p>INDICATIVE PLANT PALETTE</p>	<p>DRAWN</p> <p>MK</p>	<p>CHECKED</p> <p>RL</p>	<p>DRAWING TITLE</p> <p>INDICATIVE PLANT PALETTE</p>	<p>DATE</p> <p>18-SEP-23</p>	<p>JOB NUMBER</p> <p>20230629</p>	<p>DRAWN</p> <p>MK</p>	<p>CHECKED</p> <p>RL</p>	<p>DRAWING NUMBER</p> <p>LDA-301</p>
				<p>PROJECT</p> <p>MOOREBANK MPW SOUTH UDDR</p> <p>MOOREBANK INTERMODAL PRECINCT, NSW 2170</p>										<p>SCALE</p> <p>N/A</p>



NOTE: PLANTING IS TO BE MIXED IN NATURE AS SHOWN IN DIAGRAM ABOVE WITH PLANTS OF THE SAME SPECIES CLUSTERED TOGETHER IN GROUPS OF 4-7. THIS DIAGRAM IS USED AS A TYPICAL TO CALCULATE THE PROPOSED PLANTING QUANTITY SHOWN IN THE DETAILED LANDSCAPE PLANS.

1-1 PLANT MIX 1 - BORDER GROUNDCOVER PLANTING
TYPICAL PLANTING DETAIL - SCALE 1:20

1-2 PLANT MIX 2 - LOW MASS PLANTING
TYPICAL PLANTING DETAIL - SCALE 1:20



NOTE: PLANTING IS TO BE MIXED IN NATURE AS SHOWN IN DIAGRAM ABOVE WITH PLANTS OF THE SAME SPECIES CLUSTERED TOGETHER IN GROUPS OF 4-7 (ONLY 2 DOR EXC EVERY 9M²). THIS 3000 X 3000 DIAGRAM IS USED AS A TYPICAL TO CALCULATE THE PROPOSED PLANTING QUANTITY SHOWN IN THE DETAILED LANDSCAPE PLANS.

NOTE: PLANTING IS TO BE LAYERED AS SHOWN IN DIAGRAM ABOVE. GROUNDCOVERS ARE TO BE POSITIONED IN FRONT OF CARPARK/HARDSTAND TO DEMONSTRATE THE LAYERING EFFECT

NOTE: PLANTING IS TO BE LAYERED AS SHOWN IN DIAGRAM ABOVE. GROUNDCOVERS ARE TO BE POSITIONED IN FRONT OF CARPARK/HARDSTAND TO DEMONSTRATE THE LAYERING EFFECT

1-3 PLANT MIX 3 - MIXED MASS PLANTING
TYPICAL PLANTING DETAIL - SCALE 1:20

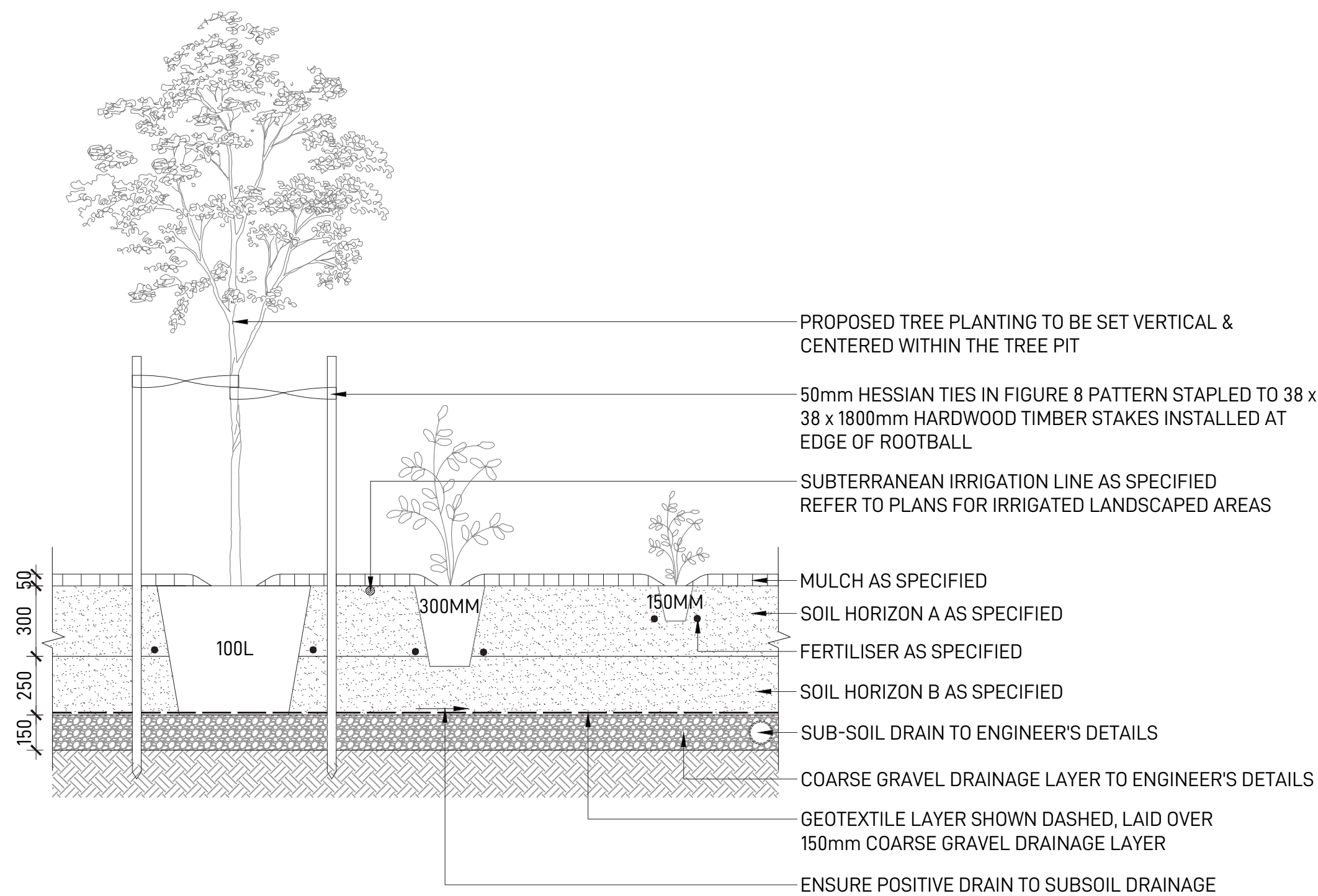
1-4 PLANT MIX 4 - CARPARK STRIP PLANTING
TYPICAL PLANTING DETAIL - SCALE 1:20

1-5 PLANT MIX TYPE 5 - CARPARK BAY PLANTING
TYPICAL PLANTING DETAIL - SCALE 1:20

NOTE: REFER TO DETAILED LANDSCAPE PLAN IN DRAWING LDA-200 SERIES FOR APPLICATION OF THESE PLANT MATRIX REFER TO PLANT SCHEDULE IN DRAWING LDA-301 FOR PLANT NAMES, POT SIZE AND SPACING CONTRACTOR TO ENSURE PLANT INSTALLATION IS AS PER PLANT MATRIX DETAILED IN THIS DRAWING

LANDSCAPE ARCHITECT GROUND iNK <small>SUITE 201, 75 ARCHER ST, CHATSWOOD NSW 2067 PH. (02) 9411 3279 WWW.GROUNDINK.COM.AU ABN 55 163 025 456 ACN 163 025 456 © GROUND INK PTY LTD THIS DESIGN AND DRAWING IS PROTECTED BY COPYRIGHT.</small>	CLIENT LOGOS <small>1 MACQUARIE PLACE, SYDNEY NSW 2000 PH. (02) 8197 3900 WWW.LOGOSPROPERTY.COM</small>	ARCHITECT watson young <small>LEVEL 11/15 BLUE ST, NORTH SYDNEY NSW 2060 PH. (02) 8329 0730 WWW.WATSONYOUNG.COM.AU</small>	NOTE VERIFY ALL DIMENSIONS ON SITE BEFORE COMMENCING WORK. REPORT ALL DISCREPANCIES TO LANDSCAPE ARCHITECT PRIOR TO CONSTRUCTION. FIGURED DIMENSIONS TO BE TAKEN IN PREFERENCE TO SCALED DRAWINGS. ALL WORK IS TO CONFORM TO RELEVANT AUSTRALIAN STANDARDS AND OTHER CODES AS APPLICABLE. LOCATION OF UNDERGROUND SERVICES TO BE PROVEN ON SITE AND PROTECTED IF NECESSARY PRIOR TO CONSTRUCTION. DIAL BEFORE YOU DIG. PLANT SPECIES AND QUANTITIES SHOWN ARE INDICATIVE ONLY AND ARE SUBJECT TO CHANGE BASED ON FUTURE PROJECT REQUIREMENTS.	ISSUE DATE DESCRIPTION DRAWN CHECKED	DRAWING TITLE LANDSCAPE DETAILS 1 PLANT MATRIX	DATE JOB NUMBER DRAWN CHECKED DRAWING NUMBER 18-SEP-23 20230629 MK RL LDA-401
				A 04.08.23 DRAFT ISSUE FOR COORDINATION MK RL B 07.09.23 ISSUE FOR COORDINATION MK RL C 18.10.23 ISSUE FOR COORDINATION MK RL		PROJECT MOOREBANK MPW SOUTH UDDR <small>MOOREBANK INTERMODAL PRECINCT, NSW 2170</small> SCALE 1:20 / A1 0 0.2 0.4 0.6M 1 1 1 1

TYPICAL LANDSCAPE DETAILS



2-1 MASS PLANTING IN NATURAL GROUND
TYPICAL SECTION - SCALE 1:20

LANDSCAPE MAINTENANCE SCHEDULE

LANDSCAPE MAINTENANCE SCHEDULE

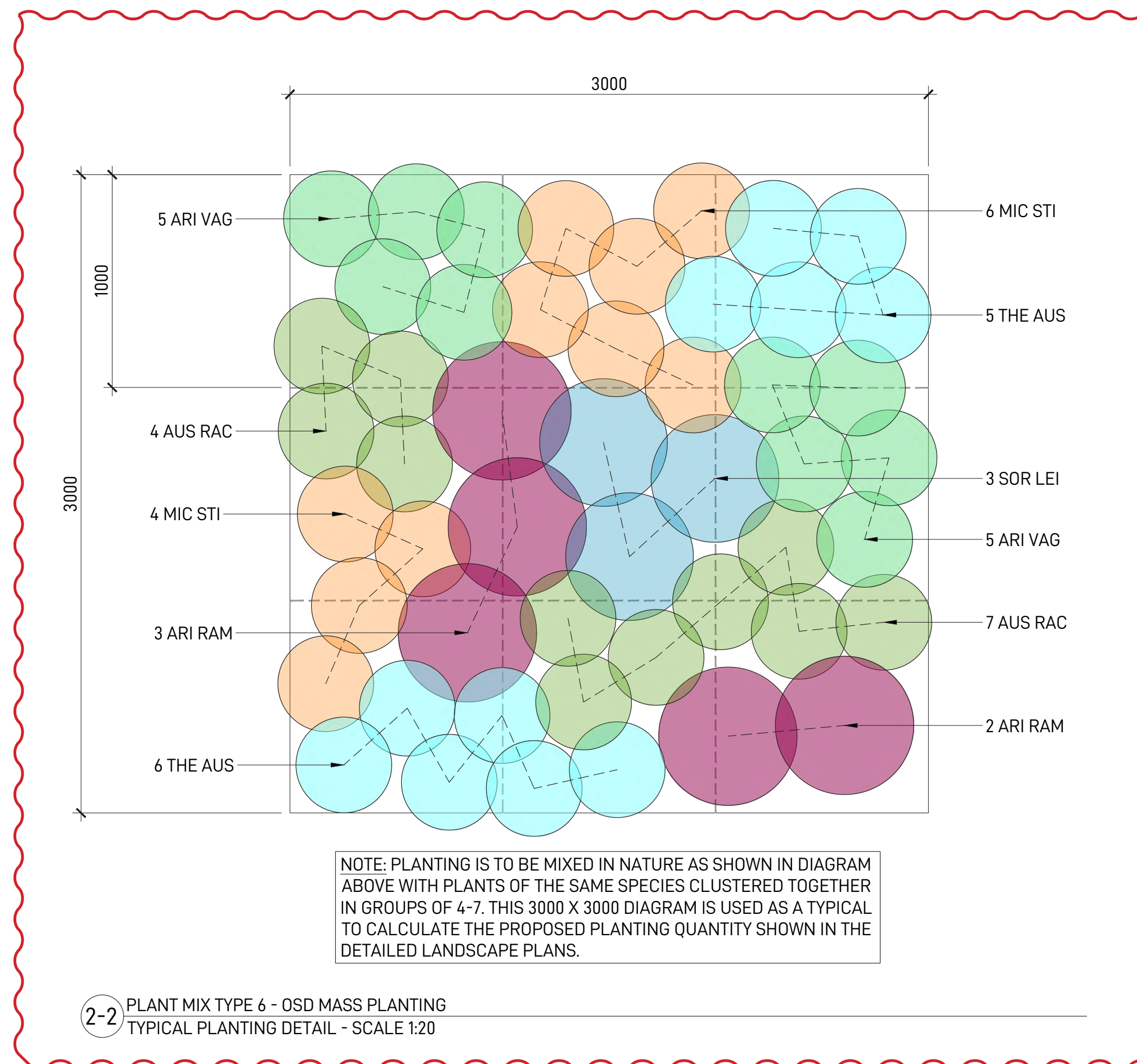
MONTH	JAN	FEB	MAR	APR	MAY	JUN	JUL	AUG	SEP	OCT	NOV	DEC
INSPECTIONS	2M		2M		2M		2M		2M		2M	
WATERING	W	W	W	W	W	W	W	W	W	W	W	W
WEED AND PEST MANAGEMENT	AR	AR	AR	AR	AR	AR	AR	AR	AR	AR	AR	AR
LITTER REMOVAL	2M		2M		2M		2M		2M		2M	
REMOVAL OF DEAD/DYING TREE LIMBS	2M		2M		2M		2M		2M		2M	
PLANT REPLACEMENT IF REQUIRED	AR	AR	AR	AR	AR	AR	AR	AR	AR	AR	AR	AR
MULCHING	AR	AR	AR	AR	AR	AR	AR	AR	AR	AR	AR	AR
TREE STAKE ADJUSTMENTS	AR	AR	AR	AR	AR	AR	AR	AR	AR	AR	AR	AR
FERTILISING	AR	AR	AR	AR	AR	AR	AR	AR	AR	AR	AR	AR

PLANTING ESTABLISHMENT PERIOD - 12 MONTHS

LANDSCAPE MATERIAL ESTABLISHMENT - 12 MONTHS

KEY W-WEEKLY, 2M- EVERY TWO MONTHS, AR- AS REQUIRED

THE CONTRACTOR IS TO ALLOW 52 WEEKS PLANTING ESTABLISHMENT PERIOD FROM THE DATE OF PRACTICAL COMPLETION. CONTRACTOR TO MAINTAIN A LOG BOOK TO KEEP A RECORD OF MAINTENANCE EVERY MONTH. REPLACEMENTS OF FAILED, DAMAGED OR STOLEN PLANTS TO BE CARRIED OUT DURING THE MAINTENANCE PERIOD. IRRIGATION SYSTEMS TO BE INSTALLED AND MAINTAINED DURING THE MAINTENANCE PERIOD. LANDSCAPE MAINTENANCE REPORT SHALL BE SUBMITTED TO THE PRINCIPLE CERTIFYING AUTHORITY BY THE CONTRACTOR.



2-2 PLANT MIX TYPE 6 - OSD MASS PLANTING
TYPICAL PLANTING DETAIL - SCALE 1:20

OUTLINE LANDSCAPE SPECIFICATION

GENERAL

MAINTENANCE SHALL MEAN THE CARE AND MAINTENANCE OF THE LANDSCAPE WORKS BY ACCEPTED HORTICULTURAL PRACTICE AS RECTIFYING ANY DEFECTS THAT BECOME APPARENT IN THE LANDSCAPE WORKS UNDER NORMAL USE. THE LANDSCAPE CONTRACTOR SHALL ATTEND THE SITE ON A WEEKLY BASIS TO MAINTAIN THE LANDSCAPE WORKS FOR THE FULL TERM APPROVED AT CC STAGE OF THE MAINTENANCE PERIOD (COMMENCING FROM PRACTICAL COMPLETION).

RUBBISH REMOVAL

DURING THE TERM OF THE MAINTENANCE PERIOD THE LANDSCAPE CONTRACTOR SHALL UNDERTAKE RUBBISH REMOVAL FROM THE SITE ON A WEEKLY BASIS TO ENSURE THE SITE REMAINS IN TIDY CONDITION.

WEED ERADICATION

WEED GROWTH THAT MAY OCCUR IN, PLANTED OR MULCHED AREAS IS TO BE REMOVED USING ENVIRONMENTALLY ACCEPTABLE METHODS I.E. NON-RESIDUAL GLYPHOSATE HERBICIDE, (E.G. 'ROUNDUP', APPLIED IN ACCORDANCE WITH THE MANUFACTURER'S DIRECTIONS) OR HAND WEEDING.

TREE REPLACEMENT

TREES SHALL SHOW SIGNS OF HEALTHY VIGOROUS GROWTH AND BE FREE FROM DISEASE AND NOT EXHIBIT SIGNS OF STRESS PRIOR TO HANDOVER TO THE CLIENT. ANY TREES OR PLANT THAT DIE OR FAIL TO THRIVE, OR ARE DAMAGED OR STOLEN WILL BE REPLACED. REPLACEMENT MATERIAL SHALL HAVE THE MAINTENANCE PERIOD EXTENDED IN ACCORDANCE WITH THE LANDSCAPE CONTRACT CONDITIONS. TREES AND PLANT MATERIALS SHALL BE EQUAL TO THE MINIMUM REQUIREMENTS OF SPECIES SPECIFIED AND APPROVED MATERIAL DELIVERED TO SITE. SHOULD THE CONDITION DECLINE FROM THE FREQUENTLY SAMPLE THE SUPERINTENDENT RESERVES THE RIGHT TO REJECT THE TREE / PLANTS. FREQUENCY: AS REQUIRED.

PRUNING

SELECTIVE PRUNING MAY BE REQUIRED DURING THE ESTABLISHMENT PERIOD TO PROMOTE A BALANCED CANOPY STRUCTURE. THESE ACTIVITIES SHALL BE CARRIED OUT TO THE BEST HORTICULTURAL AND INDUSTRY PRACTICE. ALL PRUNED MATERIAL IS TO BE REMOVED FROM SITE.

IRRIGATION

A LOW VOLUME DRIP IRRIGATION SYSTEM MAY BE INSTALLED AT THE DISCRETION OF THE DEVELOPER. POSITION OF CONTROL BOX, SOLENOIDS AND IRRIGATION CONDUITS TO BE DESIGNED BY QUALIFIED IRRIGATION ENGINEER AT CC STAGE. CONTROLLERS SHALL BE MOUNTED ON A STABLE WALL, POWER RACK, OR FORMED AND CONSTRUCTED CONCRETE BASED PEDESTAL MOUNT. PERFORMANCE SPECIFICATION TO BE PROVIDED BY LANDSCAPE ARCHITECT, NOMINALLY 25MM DELIVERED TO PLANT AREAS EACH WEEK DURING ESTABLISHMENT (DEPENDING ON WEATHER CONDITIONS). AFTER ESTABLISHMENT, IRRIGATION RATES CAN BE DECREASED IN CERTAIN AREAS OF THE LANDSCAPE DEPENDING ON THE SPECIES.

WATERING

IMPLEMENT AN APPROPRIATE HAND WATERING REGIME TO MAINTAIN PLANT HEALTH AND VIGOUR. THE PROGRAM SHALL REFLECT SEASONAL CONDITIONS AND PLANT SPECIES. FREQUENCY: WEEKLY OR AS REQUIRED.

DRAINAGE

ALL LANDSCAPE AREAS ARE TO HAVE POSITIVE DRAINAGE TO SW SYSTEMS. IF AREAS OF POOR DRAINAGE ARE IDENTIFIED ON SITE THEN THIS SHOULD BE BROUGHT TO THE SITE SUPERINTENDENTS ATTENTION. INSTALL AGG LINES IF REQUIRED.

SOILS

HORIZON A - GARDEN BEDS ON NATURAL GROUND
A SANDY LOAM TO CLAY LOAM TOPSOIL MIX DESIGNED FOR GENERAL PURPOSE, ON-GRADE LANDSCAPE GARDEN BED PLANTING OF GRASSES, WOODY AND HERBACEOUS ANNUALS AND PERENNIALS THAT HAVE HIGH NUTRIENT REQUIREMENT FOR SUSTAINED OPTIMUM GROWTH, AND ARE NOT SUBJECT TO COMPACTION BY PEDESTRIAN AND OTHER FOOT TRAFFIC. HEAVIER TEXTURED SOILS IN THIS SPECIFICATION MAY REQUIRE ENGINEERED SOLUTIONS WHERE EXCESSIVE WETNESS IS ANTICIPATED. NOTE THAT ORGANIC SOIL VARIANT SHOULD NOT BE CHOSEN FOR LOW PLANTINGS AND SHOULD NOT BE USED BELOW 300MM. PLANTING METHODS INCLUDE DIRECT SEEDING, TUBE AND POTTED SPECIMENS UP TO 45L

HORIZON B - LARGER POTTED PLANTING BELOW 300MM

A SANDY, WELL DRAINED MEDIUM WITH LOW ORGANIC MATTER FOR BACKFILLING BELOW 300MM FROM THE SURFACE IN LARGER POTTED SPECIMENS OVER 45L OR 400MM DEPTH OF ROOT BALL, SEMI-ADVANCED, ADVANCED AND SUPER ADVANCED TREE PLANTING. THE SPECIFICATION MAY USE A SMALL PROPORTION OF SITE WON TOPSOIL OR SUBSOIL, PROVIDED THE ORGANIC MATTER UPPER LIMIT IS NOT EXCEEDED.

CULTIVATION

ALL GARDEN BEDS TO BE CULTIVATED TO A MIN DEPTH OF 150MM AND TREE PITS TO THE DEPTH OF THE ROOT BALL ONLY. IF ADDITIVES SUCH AS GYPSUM ARE REQUIRED CONDUCT THIS AFTER CULTIVATION INTO THE TOP 100MM OF SOIL.

PLANTING

ALL PLANTING TO BE GROWN TO NATSPEC SPECIFICATIONS. CONTRACTOR TO PREPARE SITE FOR PLANTING INCLUDING WATERING, HANDLING, SETTING OUT AND EXCAVATION. EXCAVATE A HOLE FOR EACH PLANT LARGE ENOUGH TO PROVIDE NOT LESS THAN 100MM ALL AROUND THE ROOT SYSTEM OF THE PLANT. FOR TREE PLANTING EACH HOLE SHALL BE DUG WITH A SHOVEL, BACKHOE OR SIMILAR TOOL. INDIVIDUAL HOLES SHALL BE EXCAVATED TO ALLOW ROOT SYSTEM TO SIT FLAT ON THE EXCAVATED HOLE AND 400MM TO EACH SIDE OF THE ROOT SYSTEM. BACKFILL PLANTING HOLES WITH EXISTING SITE SOIL AND TOPSOIL AS DESCRIBED IN SECTION 'SOIL'; PLANT / TREE SHALL BE SET PLUMB, WITH THE ROOT BALL SET SLIGHTLY BELOW THE FINAL SOIL LEVEL.

MULCHING

THE LANDSCAPE CONTRACTOR SHALL SUPPLY AND INSTALL 10MM PINE BARK MULCH TO ALL GARDEN BEDS SHOWN ON THE LANDSCAPE PLANS, TO A MINIMUM DEPTH OF 75MM. ALL MULCH IS TO BE FREE OF DELETERIOUS MATTER SUCH AS SOIL, WEEDS AND STICKS. MULCHED SURFACES ARE TO BE KEPT CLEAN AND TIDY AND FREE OF ANY DELETERIOUS MATERIAL AND FOREIGN MATTER. REINSTATE DEPTHS TO A UNIFORM LEVEL OF 75MM WITH MULCH AS SPECIFIED, MULCH TO BE FREE OF ANY WOOD MATERIAL IMPREGNATED WITH CCA OR SIMILAR TOXIC TREATMENT. MAINTAIN WATERING RINGS AROUND TREES. TOP UP MULCH LEVELS PRIOR TO HANDOVER TO CLIENT.

PEST AND DISEASE CONTROL

THE LANDSCAPE CONTRACTOR SHALL SPRAY FOR PESTS AND DISEASE INFESTATIONS WHEN THE PEST AND FUNGAL ATTACK HAS BEEN POSITIVELY IDENTIFIED AND WHEN THEIR POPULATIONS HAVE INCREASED TO A POINT THAT WILL BECOME DETRIMENTAL TO PLANT GROWTH. APPLY ALL PESTICIDES TO MANUFACTURER'S DIRECTIONS. FREQUENCY: WEEKLY INSPECTION

FERTILISING

PELLETS SHALL BE IN THE FORM INTENDED TO UNIFORMLY RELEASE PLANT FOOD ELEMENTS FOR A PERIOD OF APPROXIMATELY NINE MONTHS EQUAL TO SHIRLEYS KOKEI PELLETS, ANALYSIS 6.3:1.8:2.9 OR SIMILAR APPROVED. KOKEI PELLETS SHALL BE PLACED AT THE TIME OF PLANTING TO THE BASE OF THE PLANT, 50MM MINIMUM FROM THE ROOT BALL AT A RATE OF TWO PELLETS PER 300MM OF TOP GROWTH TO A MAXIMUM OF 8 PELLETS PER TREE. GENERALLY CHECK FOR SIGNS OF NUTRIENT DEFICIENCIES (YELLOWING OF LEAVES, FAILURE TO THRIVE), AND ADAPT FERTILISER REGIME TO SUIT. FERTILISER SHOULD BE APPLIED AT THE BEGINNING AND THE END OF THE (SUMMER) GROWING SEASON.

<p>LANDSCAPE ARCHITECT</p> <p>GROUND iNK</p> <p>SUITE 201, 75 ARCHER ST, CHATSWOOD NSW 2067 PH. (02) 9411 3279 WWW.GROUNDINK.COM.AU ABN 55 163 025 456 ACN 163 025 456 © GROUND INK PTY LTD THIS DESIGN AND DRAWING IS PROTECTED BY COPYRIGHT.</p>	<p>CLIENT</p> <p>LOGOS</p> <p>1 MACQUARIE PLACE, SYDNEY NSW 2000 PH. (02) 8197 3900 WWW.LOGOSPROPERTY.COM</p>	<p>ARCHITECT</p> <p>watson young</p> <p>LEVEL 11/15 BLUE ST, NORTH SYDNEY NSW 2060 PH. (02) 8329 0730 WWW.WATSONYOUNG.COM.AU</p>	<p>NOTE</p> <p>VERIFY ALL DIMENSIONS ON SITE BEFORE COMMENCING WORK. REPORT ALL DISCREPANCIES TO LANDSCAPE ARCHITECT PRIOR TO CONSTRUCTION. FIGURED DIMENSIONS TO BE TAKEN IN PREFERENCE TO SCALED DRAWINGS. ALL WORK IS TO CONFORM TO RELEVANT AUSTRALIAN STANDARDS AND OTHER CODES AS APPLICABLE. LOCATION OF UNDERGROUND SERVICES TO BE PROVEN ON SITE AND PROTECTED IF NECESSARY PRIOR TO CONSTRUCTION. DIAL BEFORE YOU DIG. PLANT SPECIES AND QUANTITIES SHOWN ARE INDICATIVE ONLY AND ARE SUBJECT TO CHANGE BASED ON FUTURE PROJECT REQUIREMENTS.</p>	<p>ISSUE</p> <p>A 04.08.23 DRAFT ISSUE FOR COORDINATION MK RL</p> <p>B 07.09.23 ISSUE FOR COORDINATION MK RL</p> <p>C 18.10.23 ISSUE FOR COORDINATION MK RL</p>	<p>DRAWN</p> <p>CHECKED</p>	<p>DRAWING TITLE</p> <p>LANDSCAPE DETAILS 2 SOFTSCAPE</p>	<p>DATE</p> <p>18-SEP-23</p>	<p>JOB NUMBER</p> <p>20230629</p>	<p>DRAWN</p> <p>MK</p>	<p>CHECKED</p> <p>RL</p>	<p>DRAWING NUMBER</p> <p>LDA-402</p>
				<p>SCALE</p> <p>1:20 / A1</p> <p>0 0.2 0.4 0.6M</p>	<p>REV</p> <p>C</p>						

MOOREBANK MPW SOUTH UDDR

MOOREBANK INTERMODAL PRECINCT, NSW 2170

LANDSCAPE DETAILED DOCUMENTATION

SITE CONTEXT PLAN



DRAWING LIST

SHEET NUMBER	DRAWING TITLE	SCALE
LCC-001	LANDSCAPE COVER SHEET	N/A
LCC-002	MATERIAL & PLANT SCHEDULE	N/A
LCC-201	GENERAL ARRANGEMENT PLAN 1	1:2000 @ A1
LCC-202	GENERAL ARRANGEMENT PLAN 2	1:2000 @ A1
LCC-301	PROPOSED TREE PLAN - INSET 1	1:500 @ A1
LCC-302	PROPOSED TREE PLAN - INSET 2	1:500 @ A1
LCC-303	PROPOSED TREE PLAN - INSET 3	1:500 @ A1
LCC-304	PROPOSED TREE PLAN - INSET 4	1:500 @ A1
LCC-601	DETAILED LANDSCAPE PLAN - INSET 1	1:200 @ A1
LCC-602	DETAILED LANDSCAPE PLAN - INSET 2	1:200 @ A1
LCC-603	DETAILED LANDSCAPE PLAN - INSET 3	1:200 @ A1
LCC-604	DETAILED LANDSCAPE PLAN - INSET 4	1:200 @ A1
LCC-605	DETAILED LANDSCAPE PLAN - INSET 5	1:200 @ A1
LCC-606	DETAILED LANDSCAPE PLAN - INSET 6	1:200 @ A1
LCC-607	DETAILED LANDSCAPE PLAN - INSET 7	1:200 @ A1
LCC-608	DETAILED LANDSCAPE PLAN - INSET 8	1:200 @ A1
LCC-609	DETAILED LANDSCAPE PLAN - INSET 9	1:200 @ A1
LCC-610	DETAILED LANDSCAPE PLAN - INSET 10	1:200 @ A1
LCC-611	DETAILED LANDSCAPE PLAN - INSET 11	1:200 @ A1
LCC-612	DETAILED LANDSCAPE PLAN - INSET 12	1:200 @ A1
LCC-613	DETAILED LANDSCAPE PLAN - INSET 13	1:200 @ A1
LCC-614	DETAILED LANDSCAPE PLAN - INSET 14	1:200 @ A1
LCC-615	DETAILED LANDSCAPE PLAN - INSET 15	1:200 @ A1
LCC-616	DETAILED LANDSCAPE PLAN - INSET 16	1:200 @ A1
LCC-617	DETAILED LANDSCAPE PLAN - INSET 17	1:200 @ A1
LCC-618	DETAILED LANDSCAPE PLAN - INSET 18	1:200 @ A1
LCC-619	DETAILED LANDSCAPE PLAN - INSET 19	1:200 @ A1
LCC-620	DETAILED LANDSCAPE PLAN - INSET 20	1:200 @ A1
LCC-621	DETAILED LANDSCAPE PLAN - INSET 21	1:200 @ A1
LCC-622	DETAILED LANDSCAPE PLAN - INSET 22	1:200 @ A1
LCC-623	DETAILED LANDSCAPE PLAN - INSET 23	1:200 @ A1
LCC-624	DETAILED LANDSCAPE PLAN - INSET 24	1:200 @ A1
LCC-625	DETAILED LANDSCAPE PLAN - INSET 25	1:200 @ A1
LCC-626	DETAILED LANDSCAPE PLAN - INSET 26	1:200 @ A1
LCC-901	LANDSCAPE DETAILS 1 - PLANT MATRIX	1:20 @ A1
LCC-902	LANDSCAPE DETAILS 2 - SOFTSCAPE	1:20 @ A1

MATERIAL SCHEDULE & LEGEND

CODE	DESCRIPTION	DIMENSIONS	MATERIAL	FINISH	COLOUR	SUPPLIER	DETAIL REFERENCE	SYMBOL HATCH	QUANTITY
F1	PALISADE METAL PICKET FENCE						TO ARCHITECT'S DETAILS		-
F2	CHAINMESH FENCE						TO ARCHITECT'S DETAILS		-
G1	DECOMPOSED GRANITE	-	DECOMPOSED GRANITE	-	BROWN	ANL	-		-
P1	CONCRETE PAVING						TO ARCHITECT'S DETAILS		-
M1	PLANT MIX TYPE 1 BORDER GROUNDCOVER PLANTING	-	-	-	-	-	DETAIL 1-1 LCC-901		-
M2	PLANT MIX TYPE 2 LOW MASS PLANTING	-	-	-	-	-	DETAIL 1-2 LCC-901		-
M3	PLANT MIX TYPE 3 MIXED MASS PLANTING	-	-	-	-	-	DETAIL 1-3 LCC-901		-
M4	PLANT MIX TYPE 4 CARPARK STRIP PLANTING	-	-	-	-	-	DETAIL 1-4 LCC-901		-
M5	PLANT MIX TYPE 5 CARPARK BAY PLANTING	-	-	-	-	-	DETAIL 1-5 LCC-901		-
M6	PLANT MIX TYPE 6 OSD MASS PLANTING	-	-	-	-	-	DETAIL 2-2 LCC-902		-
-	IMT VEHICLE ACCESS ROAD						TO ARCHITECT'S DETAILS		-

LEGEND

SITE BOUNDARY
 LINE OF AWNING ABOVE

PS PYLON SIGNAGE
 RWT RAINWATER TANK
 SG SLIDING GATE

TREES LEGEND

	ANGOPHORA BAKERI (NARROW-LEAVED APPLE)		EUCALYPTUS CREBRA (NARROW-LEAVED IRONBARK)
	ANGOPHORA FLORIBUNDA (ROUGH-BARKED APPLE)		EUCALYPTUS EUGENIOIDES (THIN-LEAVED STRINGYBARK)
	ANGOPHORA SUBVELUTINA (BROAD-LEAVED APPLE)		EUCALYPTUS MOLUCCANA (GREY BOX)
	CALLISTEMON SALIGNUS (WILLOW BOTTLEBRUSH)		EUCALYPTUS PUNCTATA (GREY GUM)
	CORYMBIA MACULATA (SPOTTED GUM)		EUCALYPTUS TERETICORNIS (FOREST RED GUM)
	EUCALYPTUS AMPLIFOLIA (CABBAGE GUM)		MELALEUCA DECORA (WHITE FEATHER HONEYMYRTLE)
	EUCALYPTUS BAUERIANA (BLUE BOX)		WATERHOUSEA 'GREEN AVENUE'

PLANT SCHEDULES

CODE	BOTANICAL NAME (COMMON NAME)	NATIVE	EXPECTED MATURE HEIGHT	EXPECTED CANOPY SPREAD	DENSITY	INSTALL SIZE	QUANTITY
TREES							
ANG BAK	ANGOPHORA BAKERI (NARROW-LEAVED APPLE)	✓	10-15M	5-10M	AS SHOWN	100L	25
ANG FLO	ANGOPHORA FLORIBUNDA (ROUGH-BARKED APPLE)	✓	15-20M	8-13M	AS SHOWN	100L	6
CAL SAL	CALLISTEMON SALIGNUS (WILLOW BOTTLEBRUSH)	✓	6-8M	1-5M	AS SHOWN	100L	48
COR MAC	CORYMBIA MACULATA (SPOTTED GUM)	✓	15-20M	6-10M	AS SHOWN	100L	59
EUC BAU	EUCALYPTUS BAUERIANA (BLUE BOX)	✓	10-12M	8-13M	AS SHOWN	100L	71
EUC MOL	EUCALYPTUS MOLUCCANA (GREY BOX)	✓	15-20M	6-10M	AS SHOWN	100L	34
EUC PUN	EUCALYPTUS PUNCTATA (GREY GUM)	✓	10-15M	5-10M	AS SHOWN	100L	43
EUC TER	EUCALYPTUS TERETICORNIS (FOREST RED GUM)	✓	15-25M	3-6M	AS SHOWN	100L	58
MEL DEC	MELALEUCA DECORA (WHITE FEATHER HONEYMYRTLE)	✓	7-10M	6-10M	AS SHOWN	100L	97
WAT GRE	WATERHOUSEA 'GREEN AVENUE'	✓	8-10M	3-6M	AS SHOWN	100L	80
SHRUBS							
BAN BIR	BANKSIA 'BIRTHDAY CANDLES'	✓	1M	-	300MM	800MM CENTRES	3759
CAL END	CALLISTEMON 'ENDEAVOUR'	✓	2M	-	300MM	800MM CENTRES	726
CAL LIN	CALLISTEMON LINEARIS (NARROW-LEAVED BOTTLEBRUSH)	✓	1.5-2M	-	300MM	800MM CENTRES	2405
CAL RED	CALLISTEMON 'RED ALERT'	✓	1-1.5M	-	300MM	800MM CENTRES	726
DOR EXC	DORYANTHES EXCELSA (GYMEA LILY)	✓	1M	-	300MM	800MM CENTRES	802
MEL ERI	MELALEUCA ERICIFOLIA (SWAMP PAPERBARK)	✓	2-5M	-	300MM	800MM CENTRES	620
MEL NOD	MELALEUCA NODOSA (PRICKLY LEAVED PAPERBARK)	✓	1-4M	-	300MM	800MM CENTRES	261
WES FRU	WESTRINGIA FRUTICOSA (COAST ROSEMARY)	✓	1.2M	-	300MM	650MM CENTRES	2405
GRASSES AND GROUNDCOVERS							
ANI FLA	ANIGOZANTHOS FLAVIDUS (KANGAROO PAW)	✓	0.5M	-	150MM	5/M ²	4037
AUS RAC	AUSTRODANTHONIA RACEMOSA (SLENDER WALLABY GRASS)	✓	0.6M	-	150MM	5/M ²	3069
CHR API	CHRYSOCEPHALUM APICULATUM (YELLOW BUTTONS)	✓	0.4M	-	150MM	5/M ²	1455
DIA CAE	DIANELLA CAERULEA (BLUE FLAX LILY)	✓	0.8M	-	150MM	5/M ²	545
DIA LON	DIANELLA LONGIFOLIA (BLUE FLAX LILY)	✓	0.8M	-	150MM	5/M ²	545
DIC STR	DICHOPOGON STRICTUS (CHOCOLATE LILY)	✓	0.8M	-	150MM	6/M ²	3143
GOO HED	GOODENIA HEDERACEA (FOREST GOODENIA)	✓	0.8M	-	150MM	5/M ²	5215
GRE PRO	GREVILLEA 'PROSTRATE GOLD'	✓	0.3M	-	150MM	4/M ²	6934
HIB DIF	HIBBERTIA DIFFUSA (WEDGE GUINEA FLOWER)	✓	0.3M	-	150MM	5/M ²	5113
LIB PAN	LIBERTIA PANICULATA (GRASS FLAG)	✓	0.6M	-	150MM	6/M ²	4801
LOM LON	LOMANDRA LONGIFOLIA (SPINY-HEAD MAT RUSH)	✓	1M	-	150MM	4/M ²	3874
LOM HYS	LOMANDRA HYSTRIX (SPINY-HEAD MAT RUSH)	✓	1M	-	150MM	4/M ²	545
POA LAB	POA LABILLARDIERI (TUSsock GRASS)	✓	1M	-	150MM	6/M ²	4271
MIC STI	MICROLAENA STIPIOIDES (WEEPING GRASS)	✓	0.7M	-	150MM	7/M ²	2790
MYO YAR	MYOPORUM 'YAREENA'	✓	0.3M	-	150MM	4/M ²	5215
THE AUS	THEMEDA AUSTRALIS (KANGAROO GRASS)	✓	0.5M	-	150MM	6/M ²	8110
WAH GRA	WAHLENBERGIA GRACILIS (AUSTRALIAN BLUEBELL)	✓	0.8M	-	150MM	5/M ²	479
OSD 6 PLANTING							
ANG SUB	ANGOPHORA SUBVELUTINA (BROAD-LEAVED APPLE)	✓	20M	12M	AS SHOWN	100L	11
EUC AMP	EUCALYPTUS AMPLIFOLIA (CABBAGE GUM)	✓	30M	6-8M	AS SHOWN	100L	11
EUC CRE	EUCALYPTUS CREBRA (BLUE BOX)	✓	35M	10-15M	AS SHOWN	100L	10
EUC EUG	EUCALYPTUS EUGENIOIDES (THIN-LEAVED STRINGY BARK)	✓	15-30M	8-12M	AS SHOWN	100L	8
ARI RAM	ARISTIDA RAMOSA (PURPLE WIRE GRASS)	✓	1.2M	-	150MM	5/M ²	1395
ARI VAG	ARISTIDA VAGANS (THREEAWN SPEARGRASS)	✓	0.8M	-	150MM	5/M ²	2790
SOR LEI	SORGHUM LEIOCLADUM (WILD SORGHUM)	✓	1M	-	150MM	5/M ²	837