

MOOREBANK PRECINCT EAST

**SEDIMENT BASIN 4:**  
 CATCHMENT AREA = 3.28 Ha  
 DISTURBED AREA = 3.28 Ha  
 REQUIRED SETTLING ZONE = 676m<sup>3</sup>  
 REQUIRED STORAGE ZONE = 29m<sup>3</sup>  
 PROVIDED BASIN VOLUME = 705m<sup>3</sup>  
 REFER TO SD 6-4

MOOREBANK AVENUE

RUNOFF FROM MOOREBANK AVENUE TO BE MANAGED BY EXISTING/PROPOSED STORMWATER INFRASTRUCTURE

MOOREBANK AVENUE

**OUTLET 4**  
 PROVIDE STABILISED SITE ACCESS REFER TO SD 6-14

**SEDIMENT BASIN 5A:**  
 CATCHMENT AREA = 20.19 Ha  
 DISTURBED AREA = 20.19 Ha  
 REQUIRED SETTLING ZONE = 4,161m<sup>3</sup>  
 REQUIRED STORAGE ZONE = 177m<sup>3</sup>  
 PROVIDED BASIN VOLUME = 22,930m<sup>3</sup>  
 REFER TO SD 6-4

GEORGES RIVER

**OUTLET 5**  
**SEDIMENT BASIN 5B:**  
 CATCHMENT AREA = 18.74 Ha  
 DISTURBED AREA = 18.74 Ha  
 REQUIRED SETTLING ZONE = 3,862m<sup>3</sup>  
 REQUIRED STORAGE ZONE = 164m<sup>3</sup>  
 PROVIDED BASIN VOLUME = 5,700m<sup>3</sup>  
 REFER TO SD 6-4

PROVIDE SEDIMENTATION CONTROLS TO THE BASIN 5 DISCHARGE WORKS. REFER TO DRAWING LPWPIW-COS-CV-DWG-0246

EXISTING EAST-WEST CHANNEL MAINTAINED AND "CLEAN" WATER BYPASS SEDIMENT CONTROL TO GEORGES RIVER

SURFACE WATER MONITORING LOCATION

PROVIDE STABILISED SITE ACCESS REFER TO SD 6-14

LIMIT OF WORKS FOR THIS STAGE OF EROSION & SEDIMENT CONTROL IMPLEMENTATION  
 MAJOR V-DRAIN REFER DETAILS ON DRG 0251. PROVIDE NOMINAL 0.5% FALL ON PAD TO BASIN TYPICAL

RESIDUAL UNDISTURBED LAND

EXISTING SITE ACCESS, HAUL ROAD & COMPOUND

GEORGES RIVER

N 6242222.718  
 E 307223.564

**EROSION & SEDIMENT CONTROL PLAN - PHASE 2**  
 1:3000 SCALE

**LEGEND:**  
 LEVELS DATUM IS AHD.

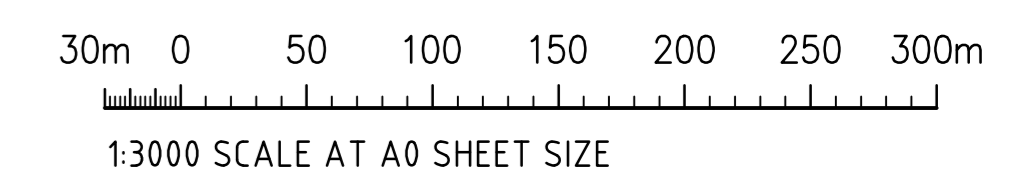
EXISTING SITE LEVELS AND DETAILS BASED ON SURVEY INFORMATION PROVIDED BY CARDNO TITLED 115804548 DATED 05/08/19.

	- SHEET-FLOW DIRECTION		- 1 IN 100 YEAR ARI FLOOD EXTENT
	- SITE BOUNDARY		- SEDIMENT BASIN (REFER TO PLAN)
	- CATCHMENT BOUNDARY		- STABILISED SOIL
	- DIRTY WATER DIVERSION DRAIN - MINOR		- STABILISED EARTH DIVERSION BUND
	- DIRTY WATER DIVERSION DRAIN - MAJOR		- HAUL ROAD
	- CLEAN WATER DIVERSION DRAIN		- DISTURBED LAND (-65Ha AT ANY ONE TIME)
	- PUMP DIVERSION		- UNDISTURBED LAND
	- SEDIMENT FENCING		- BIO-BANKING AREA

**SITE STABILITY NOTE:**  
 LAND DISTURBANCE & LAND FILLING ACTIVITIES MUST BE UNDERTAKEN IN A PHASED MANNER, IMPACTING A MAXIMUM AREA OF 65Ha AT ANY ONE TIME PER CONDITION B4.1(a).  
 DISTURBED AREAS MUST BE STABILISED TO A C-FACTOR OF 0.05 PRIOR TO THE COMPLETION OF ANY OTHER WORKS PER CONDITION B4.1(b). REFER TO TABLE 1 ON DRAWING 0200 FOR APPROVED STABILISATION METHODS

**EROSION & SEDIMENT CONTROL NOTES:**  
 REFER TO DRAWING 0200 FOR EROSION & SEDIMENT CONTROL NOTES

**SEDIMENT BASIN NOTES**  
 REFER TO DRAWING 0201 FOR SEDIMENT BASIN SIZING CALCULATIONS



**FOR CONSTRUCTION**