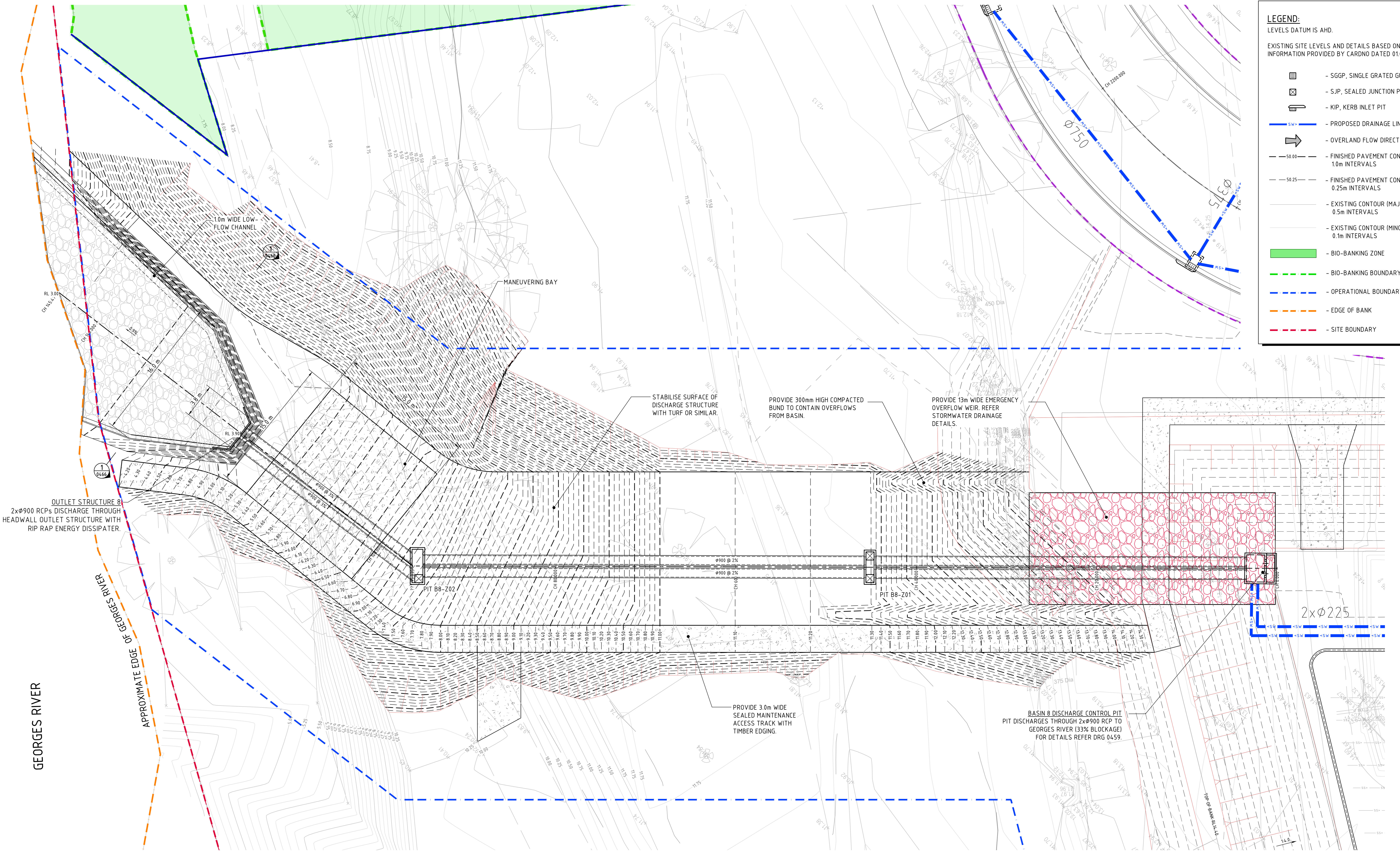


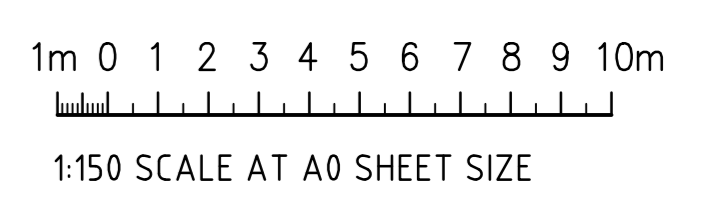
LEGEND:
LEVELS DATUM IS AHD.

EXISTING SITE LEVELS AND DETAILS BASED ON SURVEY INFORMATION PROVIDED BY CARNO DATED 01.05.2019

- SGGP, SINGLE GRATED GULLY PIT
- SJP, SEALED JUNCTION PIT
- KIP, KERB INLET PIT
- PROPOSED DRAINAGE LINE
- OVERLAND FLOW DIRECTION
- FINISHED PAVEMENT CONTOUR (MAJOR) 1.0m INTERVALS
- FINISHED PAVEMENT CONTOUR (MINOR) 0.25m INTERVALS
- EXISTING CONTOUR (MAJOR) 0.5m INTERVALS
- EXISTING CONTOUR (MINOR) 0.1m INTERVALS
- BIO-BANKING ZONE
- BIO-BANKING BOUNDARY
- OPERATIONAL BOUNDARY
- EDGE OF BANK
- SITE BOUNDARY



BASIN 8 OUTLET STRUCTURE PLAN
1:150 SCALE



FOR CONSTRUCTION

ISSUED FOR CONSTRUCTION	22.06.20	1
ISSUED FOR CONSTRUCTION	29.05.20	0
50% DESIGN COMPLETION	17.02.20	D
ISSUED FOR POST APPROVALS	29.11.19	C
PRELIMINARY ISSUE ONLY	18.10.19	B
PRELIMINARY ISSUE ONLY	04.10.19	A
AMENDMENTS	DATE	ISSUE

DEVELOPER

ARCHITECT

PROJECT MANAGER

PROJECT

PRECINCT INFRASTRUCTURE WORKS WEST
MOOREBANK AVENUE, MOOREBANK

Costin Roe Consulting Pty Ltd.
Consulting Engineers

Level 1, 8 Windmill Street
Wahlab Bay, Sydney NSW 2000
Tel: (02) 9251-7899 Fax: (02) 9241-3721
email: mail@costinroe.com.au

Costin Roe Consulting

PRECISION | COMMUNICATION | ACCOUNTABILITY

DRAWING TITLE

BASIN 8 OUTLET STRUCTURE PLAN

DRAWING No. **LPWPIW-COS-CV-DWG-0463** ISSUE **3**