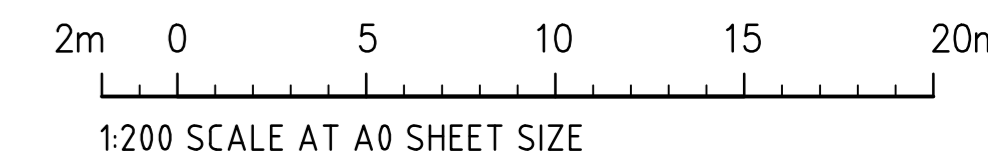


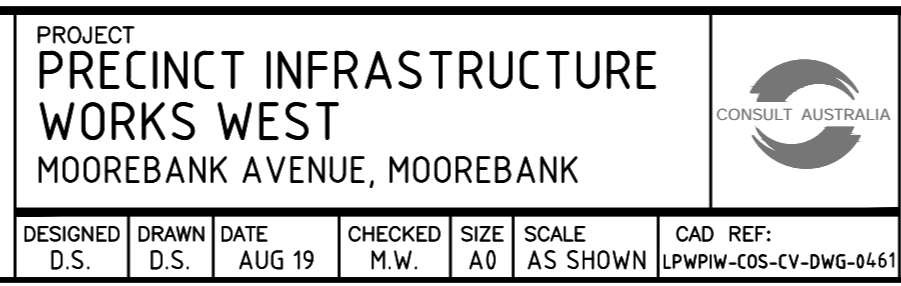
- LEGEND:**
LEVELS DATUM IS AHD.
- EXISTING SITE LEVELS AND DETAILS BASED ON SURVEY INFORMATION PROVIDED BY CARDNO DATED 01.05.2019
- SGGP, SINGLE GRATED GULLY PIT
 - SJP, SEALED JUNCTION PIT
 - KIP, KERB INLET PIT
 - PROPOSED DRAINAGE LINE
 - OVERLAND FLOW DIRECTION
 - FINISHED PAVEMENT CONTOUR (MAJOR) 1.0m INTERVALS
 - FINISHED PAVEMENT CONTOUR (MINOR) 0.25m INTERVALS
 - EXISTING CONTOUR (MAJOR) 0.5m INTERVALS
 - EXISTING CONTOUR (MINOR) 0.1m INTERVALS
 - BIO-BANKING ZONE
 - BIO-BANKING BOUNDARY
 - OPERATIONAL BOUNDARY
 - EDGE OF BANK
 - SITE BOUNDARY
 - MONOWILLS HANDRAIL OR EQUIVALENT

BASIN 5 OUTLET STRUCTURE PLAN
1:200 SCALE



FOR CONSTRUCTION

ISSUED FOR CONSTRUCTION	29.05.20	0	REVISED AS ELOUDED	16.02.22	6	DEVELOPER
50% DESIGN COMPLETION	20.03.20	E	REVISED DISCHARGE STRUCTURE GEOMETRY	01.02.21	5	
50% DESIGN COMPLETION	17.02.20	D	REVISED DISCHARGE STRUCTURE GEOMETRY	29.01.21	4	
ISSUED FOR POST APPROVALS	29.11.19	C	CONSTRAINTS MAPPING ADDED	29.10.20	3	
PRELIMINARY ISSUE ONLY	18.10.19	B	REVISED AS ELOUDED	22.09.20	2	
PRELIMINARY ISSUE ONLY	04.10.19	A	REVISED DRAWING NUMBER	22.06.20	1	
AMENDMENTS	DATE	ISSUE	AMENDMENTS	DATE	ISSUE	



Costin Roe Consulting Pty Ltd.
Consulting Engineers
Level 1, 8 Widdrill Street
Wahlab Bay, Sydney NSW 2000
Tel: (02) 9551-7899 Fax: (02) 9541-3721
email: mail@costinroe.com.au



DRAWING TITLE	ISSUE
BASIN 5 OUTLET STRUCTURE PLAN	6
DRAWING NO.	LPWPIW-COS-CV-DWG-0461

PRECISION | COMMUNICATION | ACCOUNTABILITY