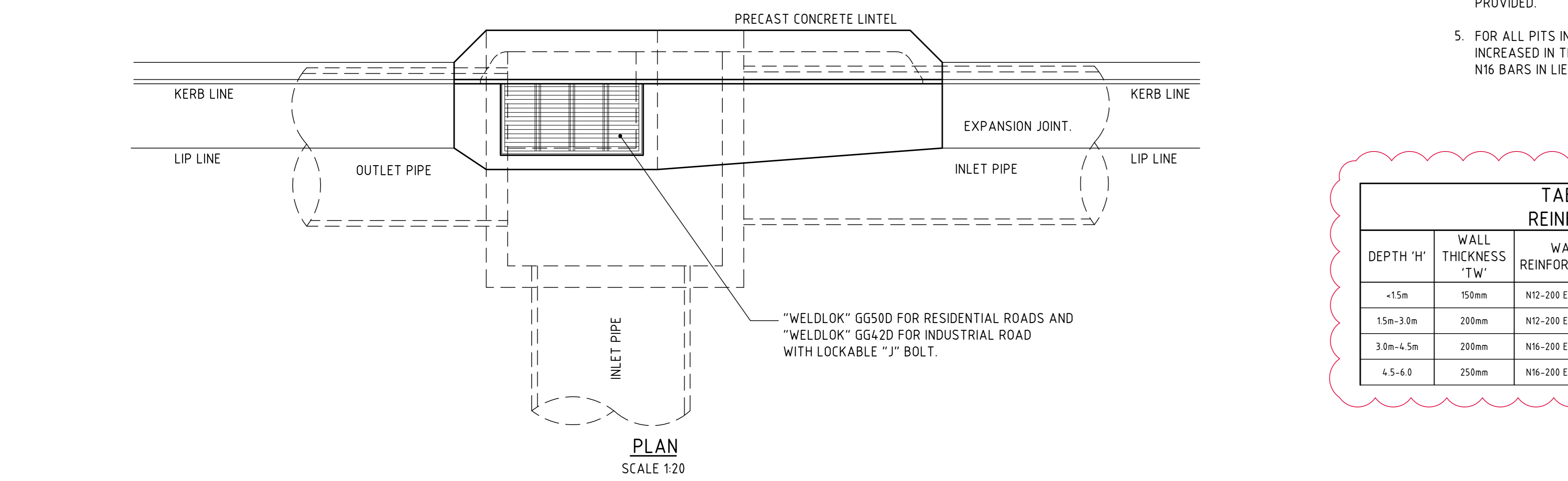


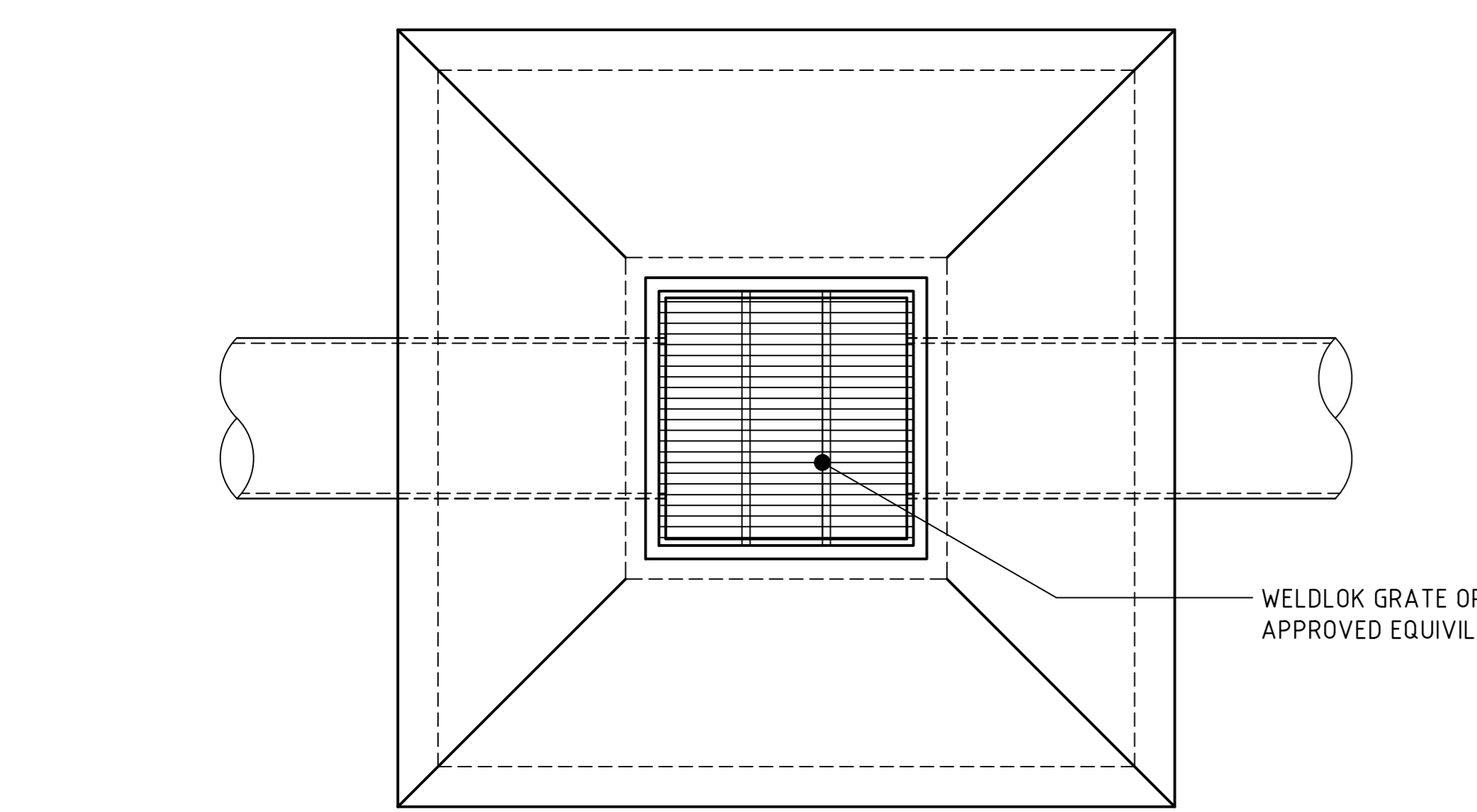
CROSS SECTION
SCALE 1:20

LONG SECTION
SCALE 1:20



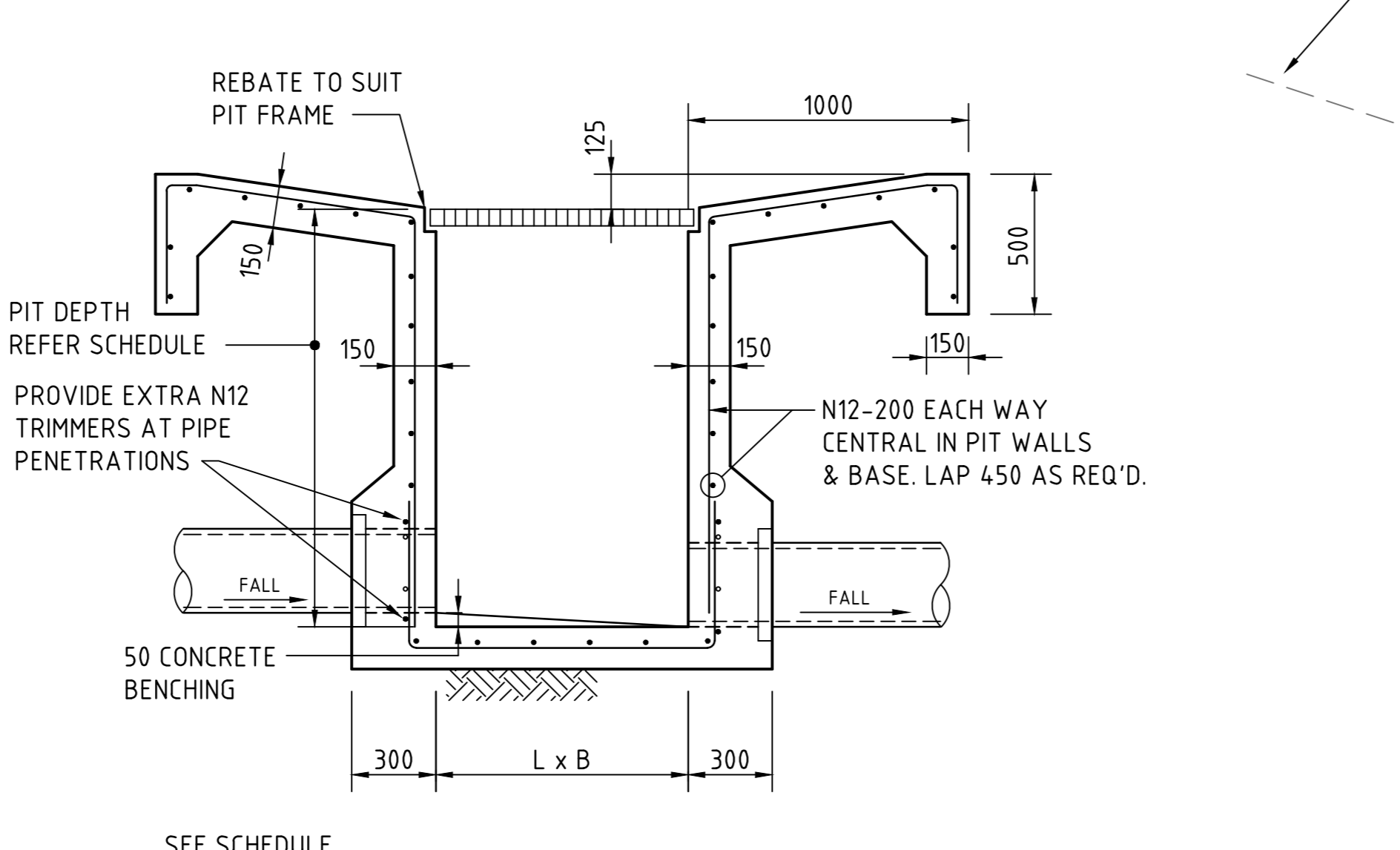
PLAN
SCALE 1:20

TAPERED KERB INLET PIT - KIP
SUBSOIL NOT SHOWN FOR CLARITY.

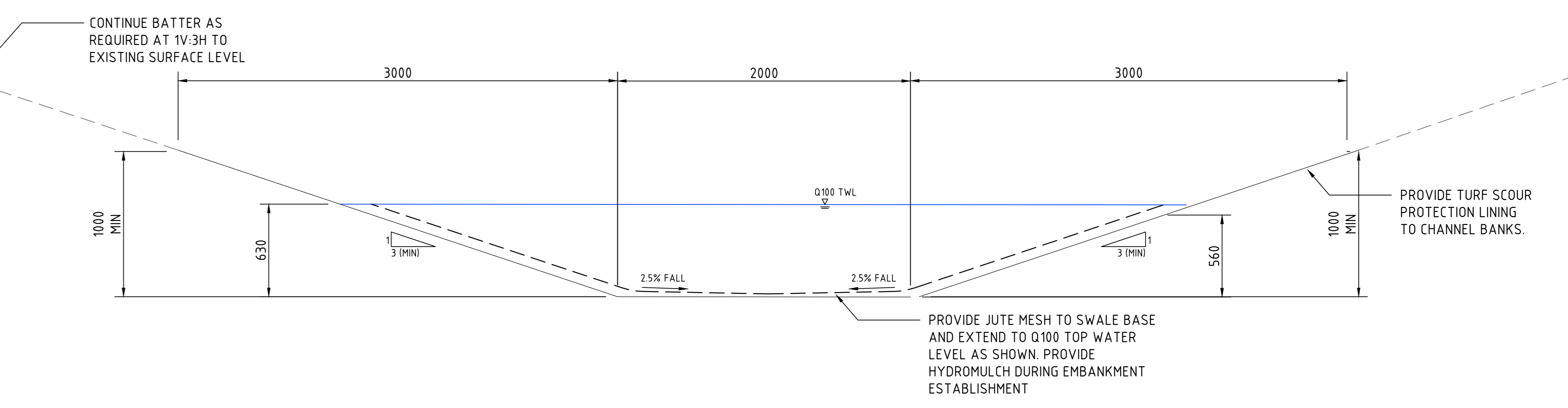


PLAN
SCALE 1:20

FIELD INLET PIT - SIP



SECTION
SCALE 1:20

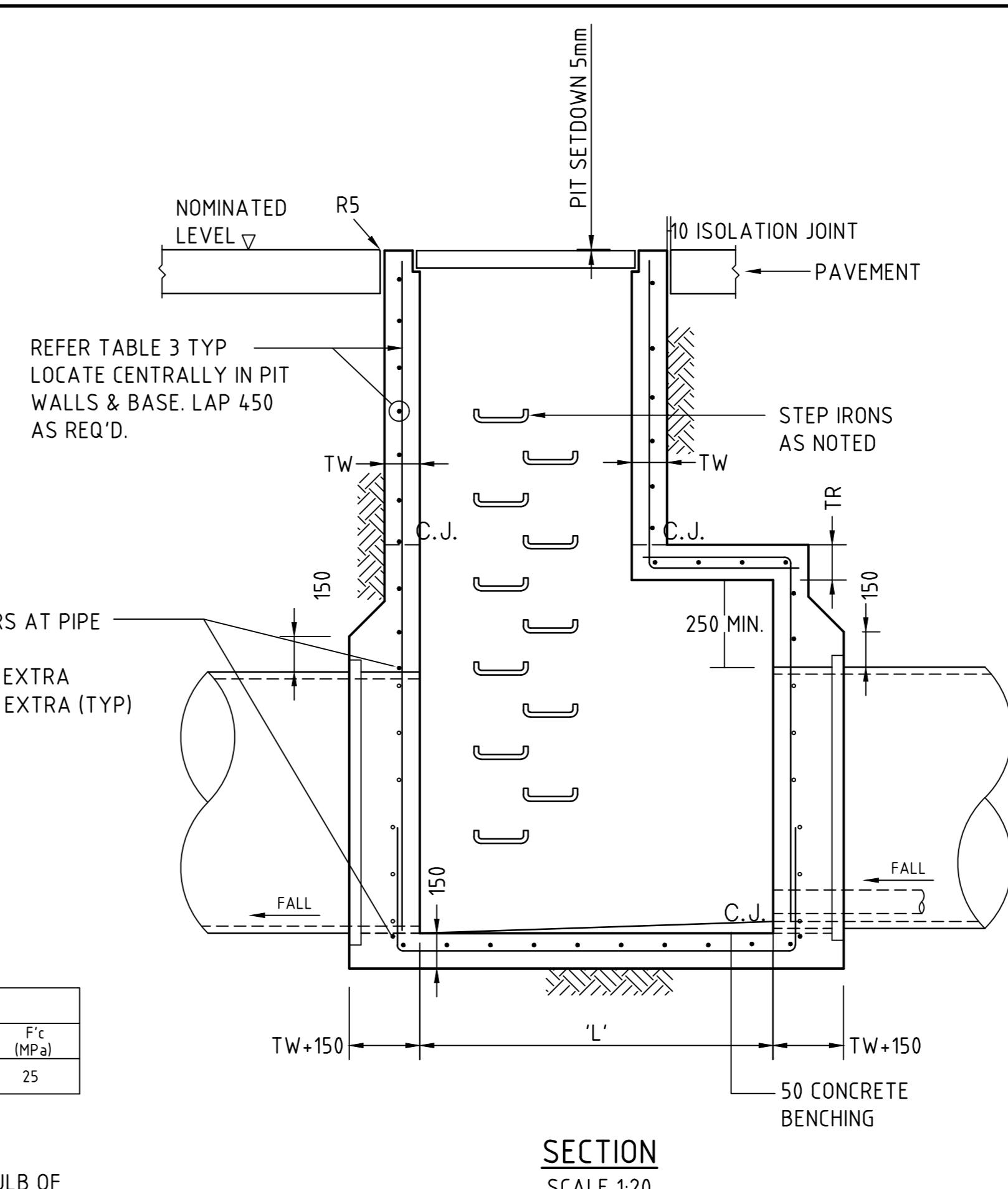


INTERSTATE FACILITY - STUB 3 DRAINAGE SWALE
SCALE 1:20

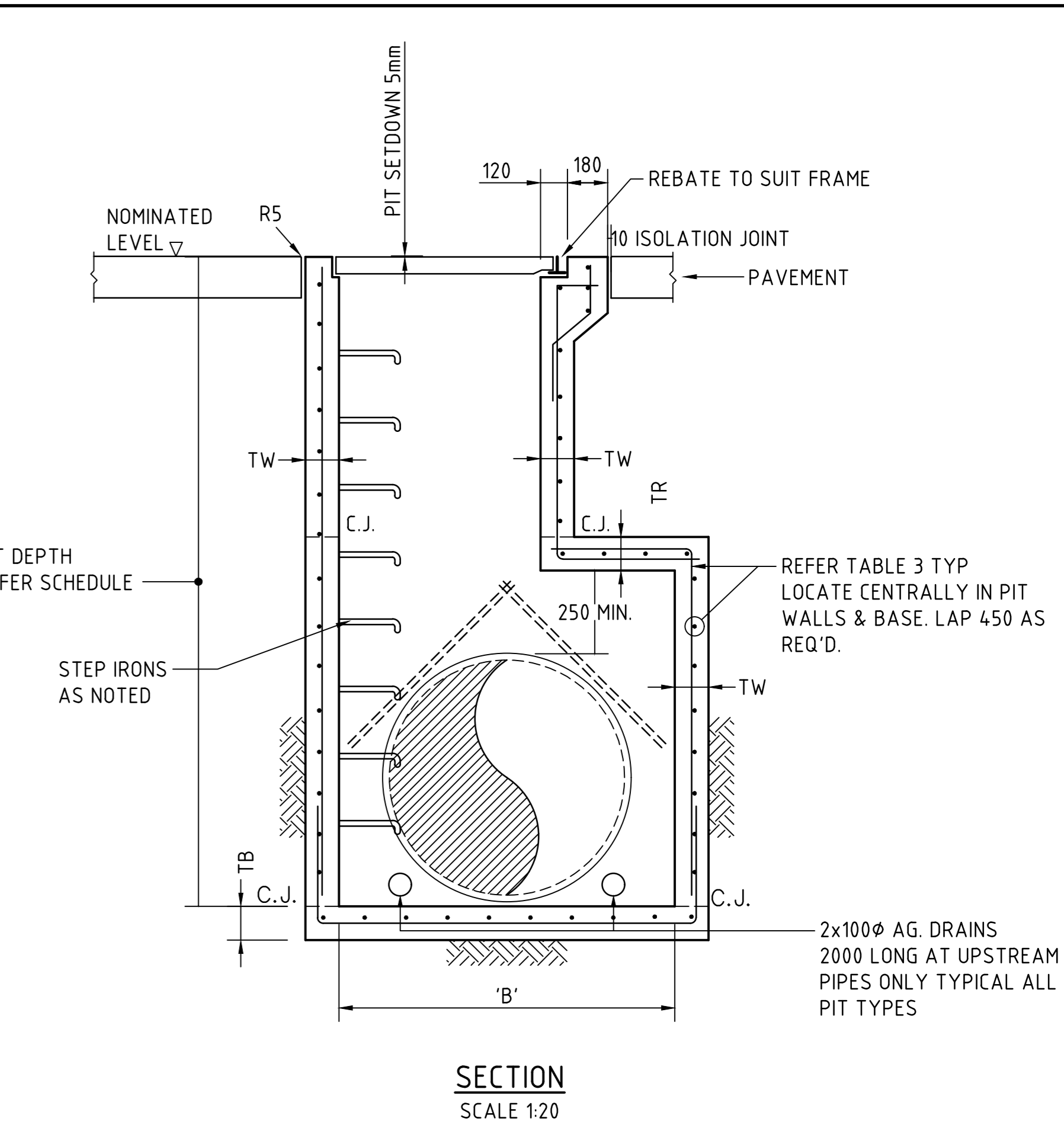
CONCRETE QUALITY					
ELEMENT	SLUMP	AGGREGATE (MAX SIZE)	CEMENT TYPE	ADMXTURE	F _{ck} (MPa)
PIT	80	20	GP	NL	25

- NOTES:
- WHERE GULLY PIT IS LOCATED ON KERB RETURNS OR BULB OF CUL-DE-SACS PROVIDE CURVED PRECAST CONCRETE LINTELS.
 - SAG PITS SHALL HAVE LINTEL PLACED CENTRALLY ABOUT THE GRATE.
 - ALL REINFORCING TO HAVE 30 MIN. CLEAR CONCRETE COVER.
 - FOR PITS DEEPER THAN 1200mm STEP IRONS SHALL BE PROVIDED.
 - FOR ALL PITS IN ITV PAVEMENT AREAS, PIT WALLS ARE TO BE INCREASED IN THICKNESS BY 50mm AND REINFORCEMENT TO BE N16 BARS IN LIEU OF N12

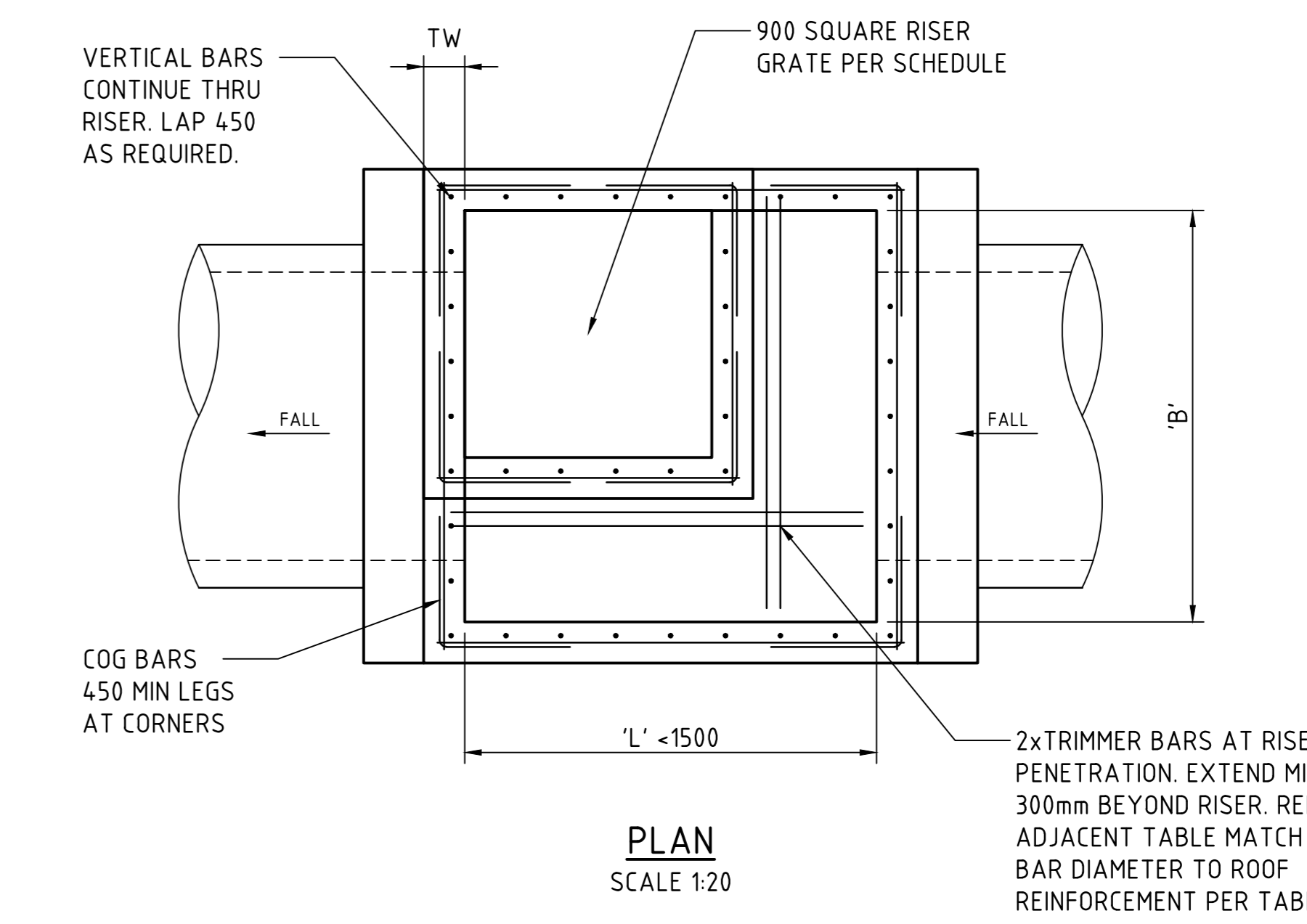
TABLE 3 - TAPERED CLASS D PIT REINFORCEMENT & WALL THICKNESS						
DEPTH 'H'	WALL THICKNESS 'TW'	WALL REINFORCEMENT	ROOF THICKNESS 'TR'	ROOF REINFORCEMENT	BASE THICKNESS 'TB'	BASE REINFORCEMENT
<1.5m	150mm	N12-200 EACH WAY	150mm	N12-200 EACH WAY	150mm	N12-200 EACH WAY
1.5m-3.0m	200mm	N12-200 EACH WAY	200mm	N12-200 EACH WAY	200mm	N12-200 EACH WAY
3.0m-4.5m	200mm	N16-200 EACH WAY	200mm	N16-200 EACH WAY	200mm	N12-200 EACH WAY
4.5-6.0	250mm	N16-200 EACH WAY	250mm	N16-200 EACH WAY	250mm	N16-200 EACH WAY



SECTION
SCALE 1:20

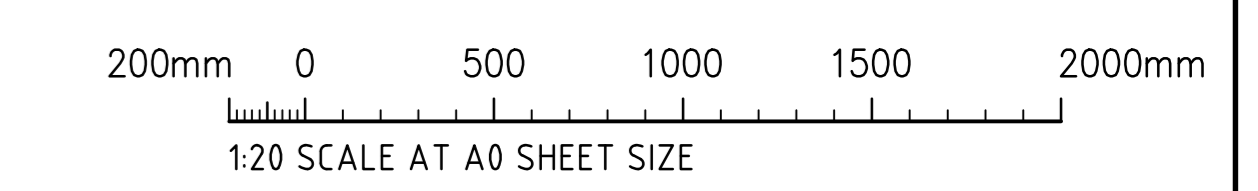


SECTION
SCALE 1:20



PLAN
SCALE 1:20

TAPERED SINGLE GRATED GULLY PIT - SGGP
SUBSOIL NOT SHOWN FOR CLARITY.



FOR CONSTRUCTION

ISSUED FOR CONSTRUCTION	DATE	ISSUE	AMENDMENTS
ISSUED FOR CONSTRUCTION	13.07.20	2	
ISSUED FOR CONSTRUCTION	29.05.20	1	
ISSUED FOR CONSTRUCTION	30.04.20	0	
50% DESIGN COMPLETION	17.02.20	C	
ISSUED FOR POST APPROVALS	29.11.19	B	
ISSUED FOR INFORMATION	18.10.19	A	REVISED AS CLOUDED
AMENDMENTS	DATE	ISSUE	AMENDMENTS

DEVELOPER
MOOREBANK
QUBE

ARCHITECT
watson young

PROJECT MANAGER
J. WYNDHAM PRINCE
CONSULTING CIVIL INFRASTRUCTURE ENGINEERS & PROJECT MANAGERS

PROJECT
PRECINCT INFRASTRUCTURE WORKS WEST
MOOREBANK AVENUE, MOOREBANK

CONSULT AUSTRALIA
Costin Roe Consulting Pty Ltd.
Consulting Engineers
Level 1, 9 Windmill Street
Wahib Bay, Sydney NSW 2000
Tel: (02) 9251-7899 Fax: (02) 9241-3721
email: mail@costinroe.com.au

Costin Roe Consulting
PRECISION | COMMUNICATION | ACCOUNTABILITY

DRAWING TITLE
STORMWATER DRAINAGE DETAILS SHEET 2
DRAWING NO.
LPWPIW-COS-CV-DWG-0452
ISSUE
3