

KERB INLET PIT - KIP

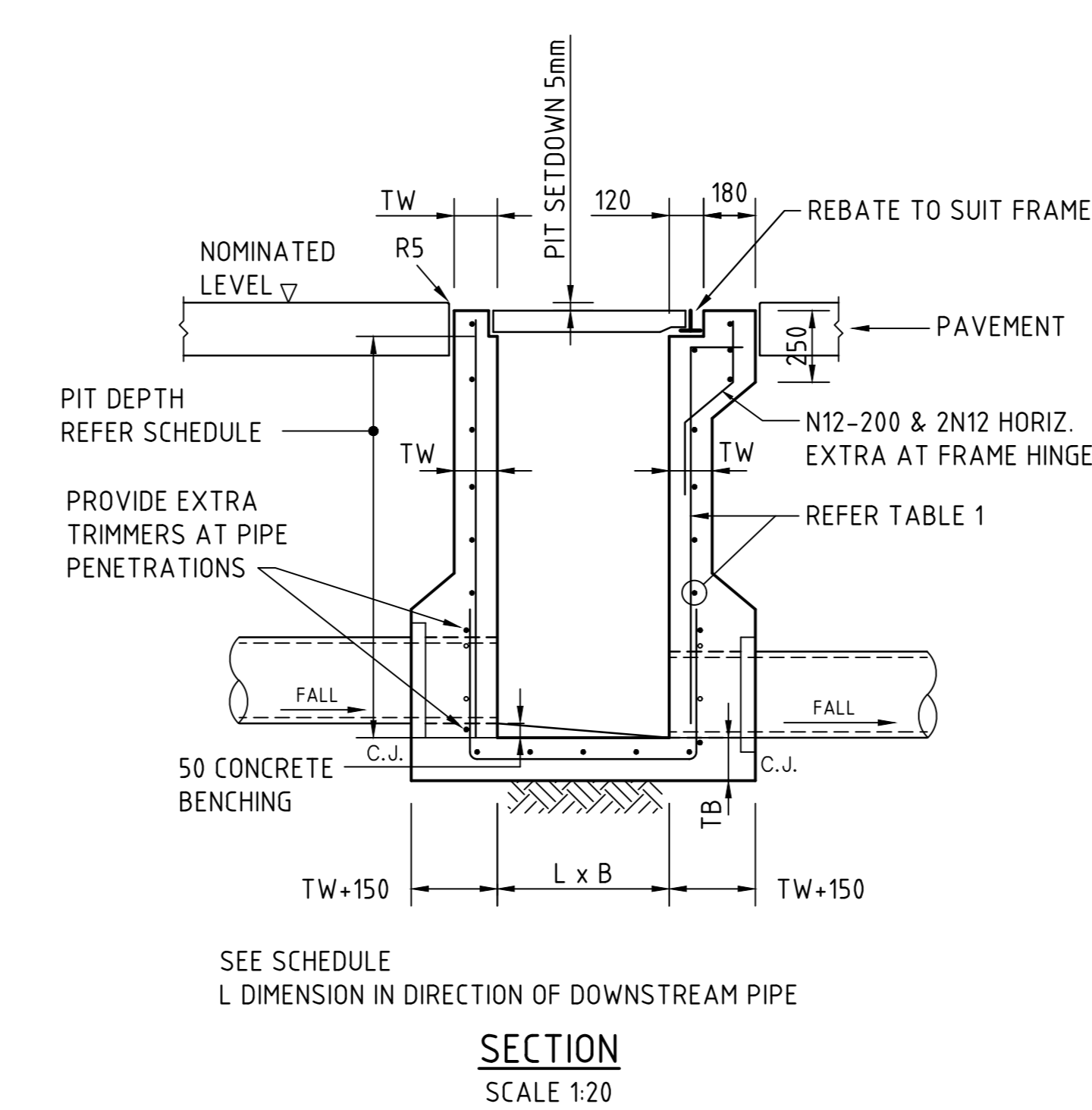
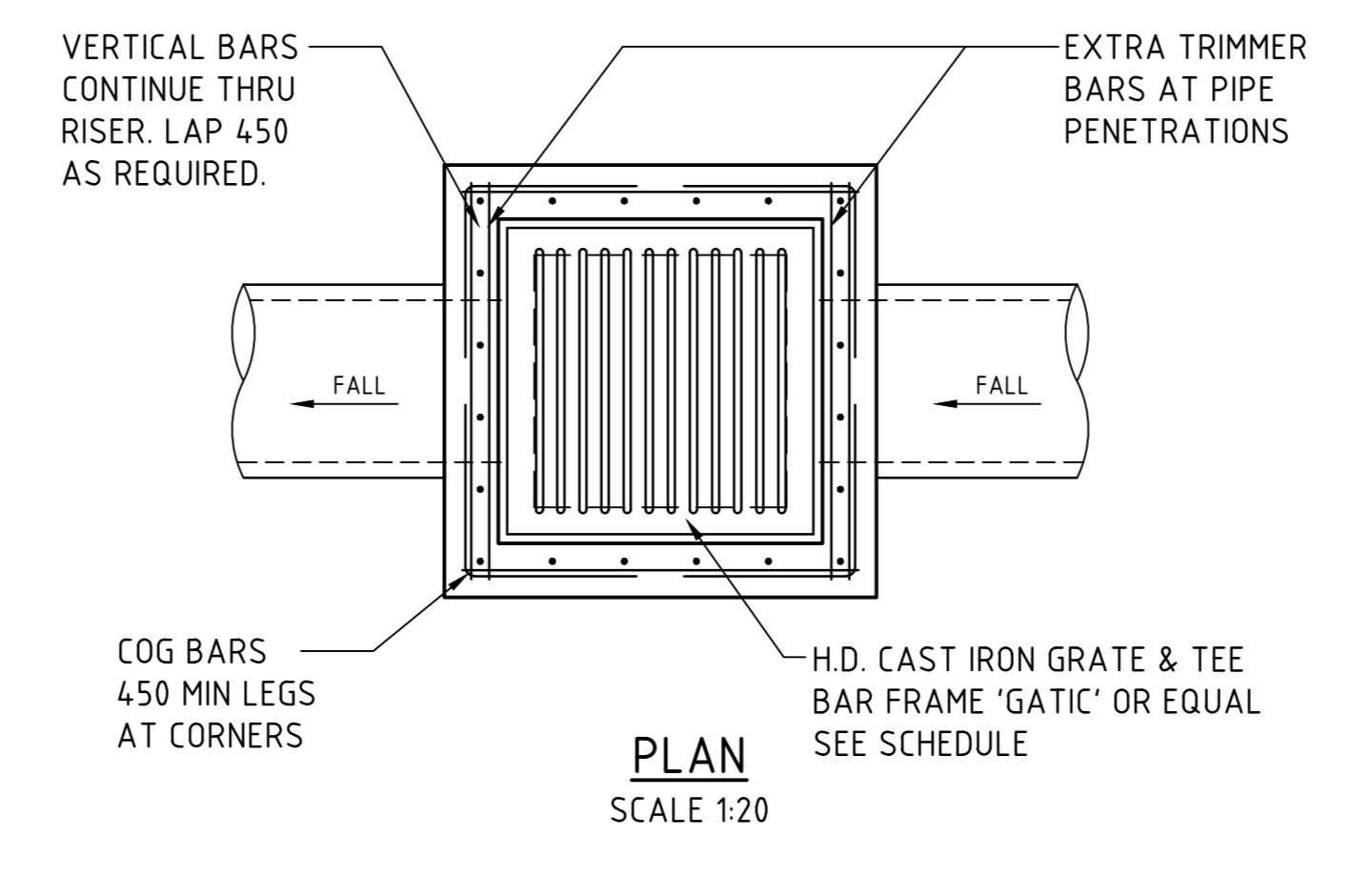
- NOTES:**
- WHERE GULLY PIT IS LOCATED ON KERB RETURNS OR BULB OF CUL-DE-SACS PROVIDE CURVED PRECAST CONCRETE LINTELS.
 - SAG PITS SHALL HAVE LINTEL PLACED CENTRALLY ABOUT THE GRATE.
 - ALL REINFORCING TO HAVE 30 MIN. CLAEAR CONCRETE COVER.
 - FOR PITS DEEPER THAN 1200mm CLIMB RAILS SHALL BE PROVIDED.

TABLE 1 - CLASS D <1200mm SQUARE PIT REINFORCEMENT & WALL THICKNESS

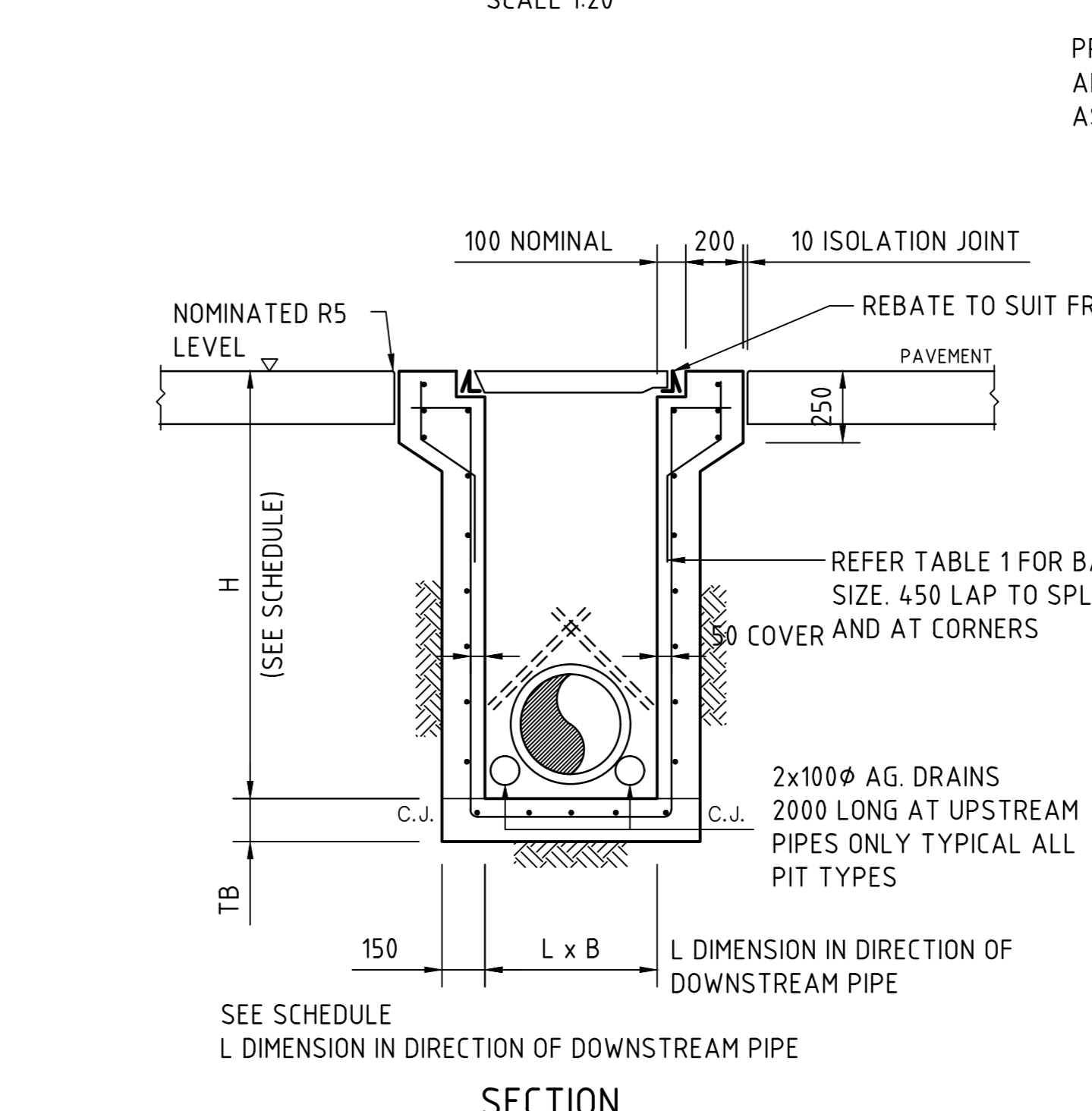
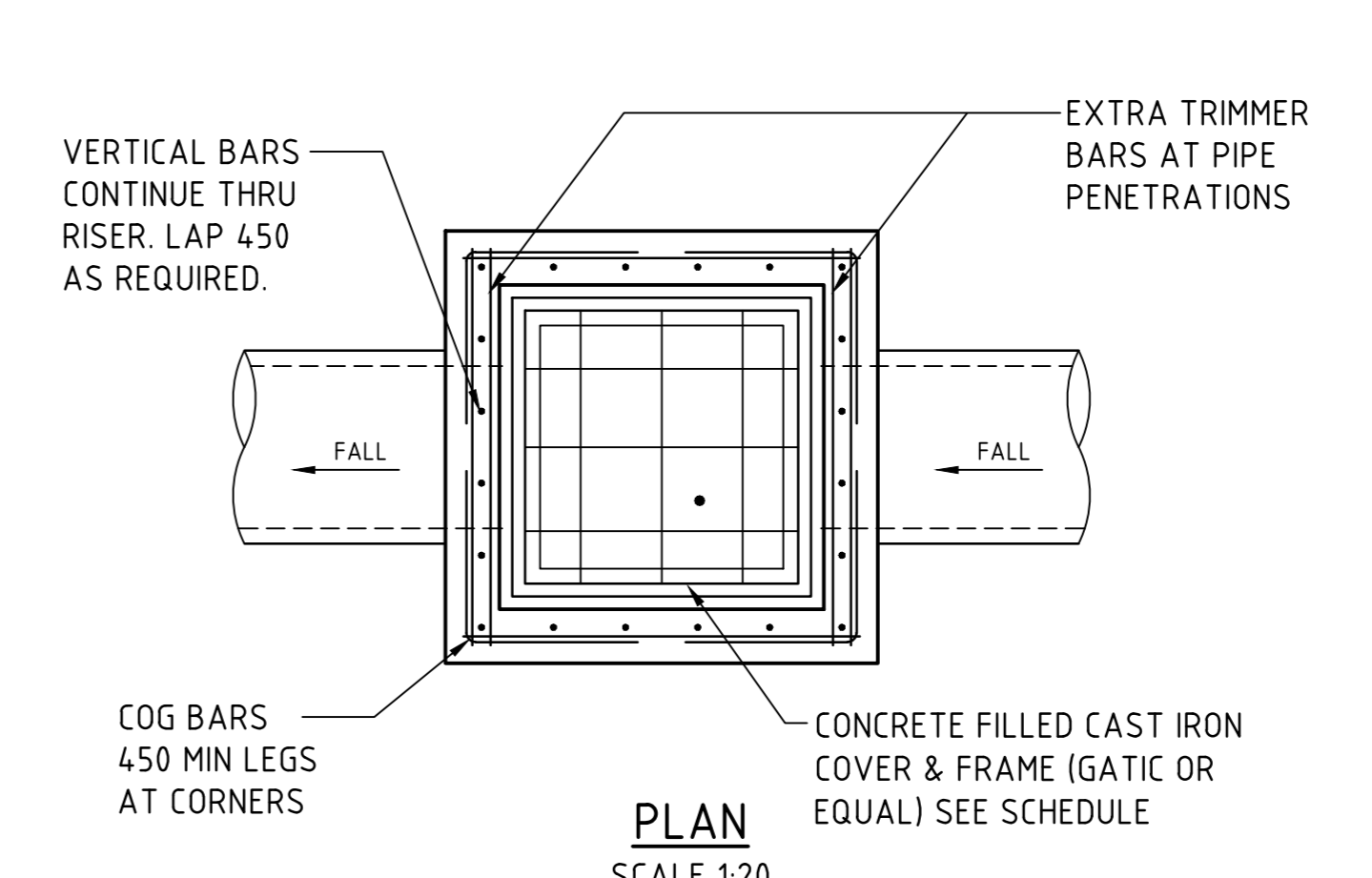
DEPTH 'H'	WALL THICKNESS 'TW'	WALL REINFORCEMENT	BASE THICKNESS 'TB'	BASE REINFORCEMENT
< 1.0m	150mm	-	150mm	-
1.0m-3.0m	150mm	N12-200 EACH WAY	150mm	N12-200 EACH WAY
3.0m-4.5m	200mm	N12-200 EACH WAY	200mm	N12-200 EACH WAY
4.5-6.0	200mm	N16-200 EACH WAY	200mm	N16-200 EACH WAY

CONCRETE QUALITY

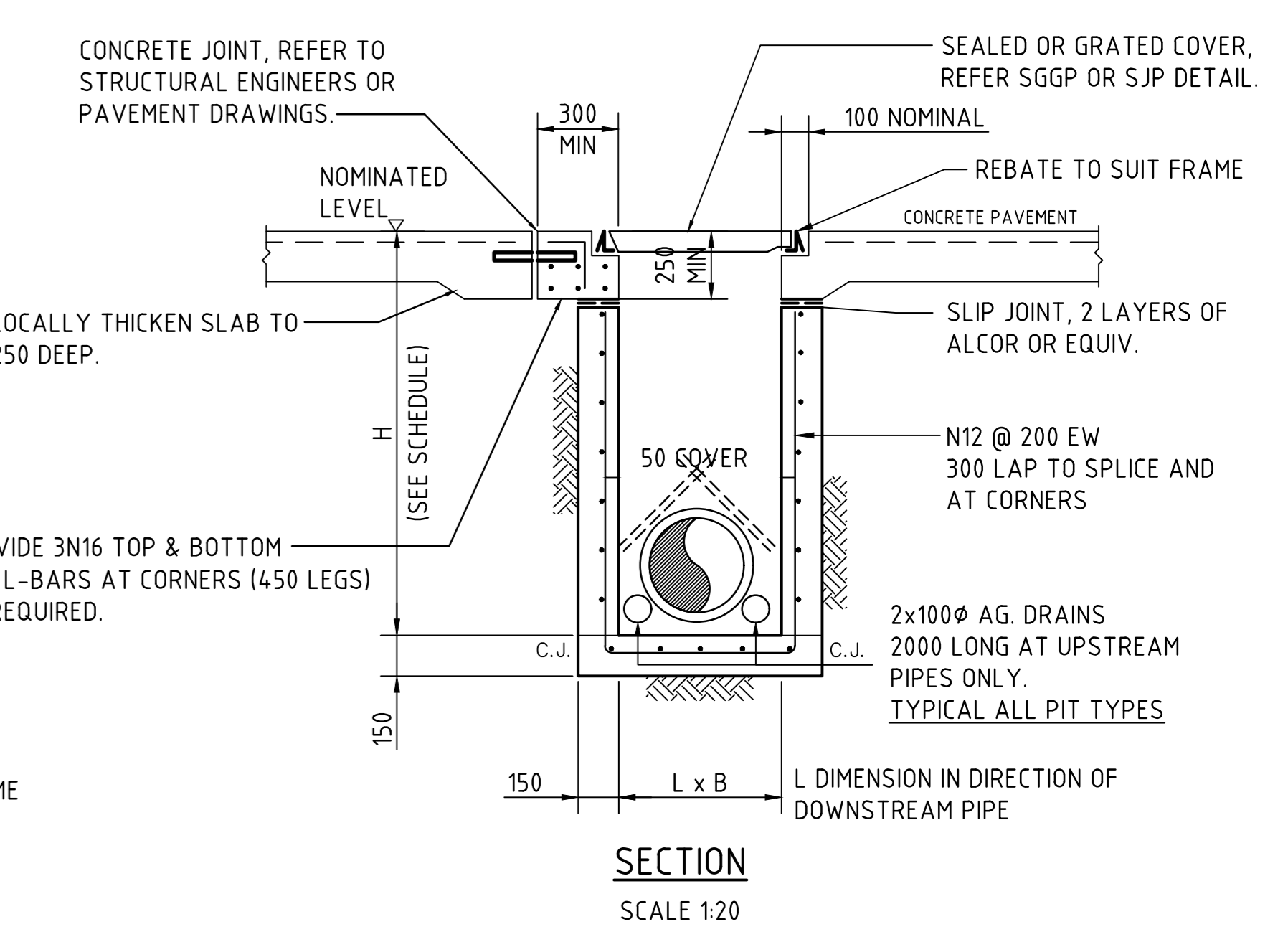
ELEMENT	SLUMP	AGGREGATE (MAX SIZE)	CEMENT TYPE	AD MIXTURE	F _c (MPa)
PIT	80	20	GP	NIL	32



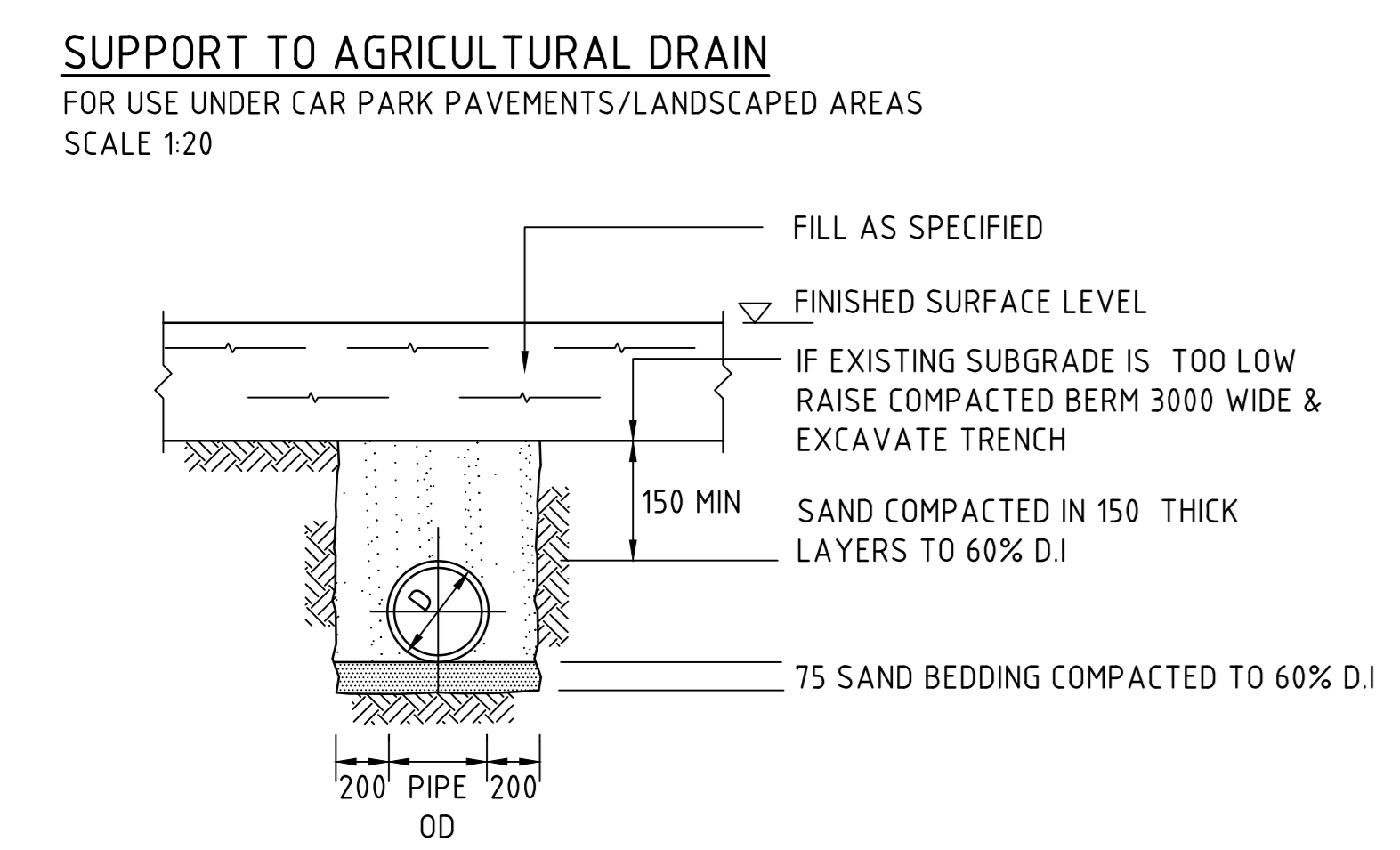
SINGLE GRATED GULLY PIT - SGGP



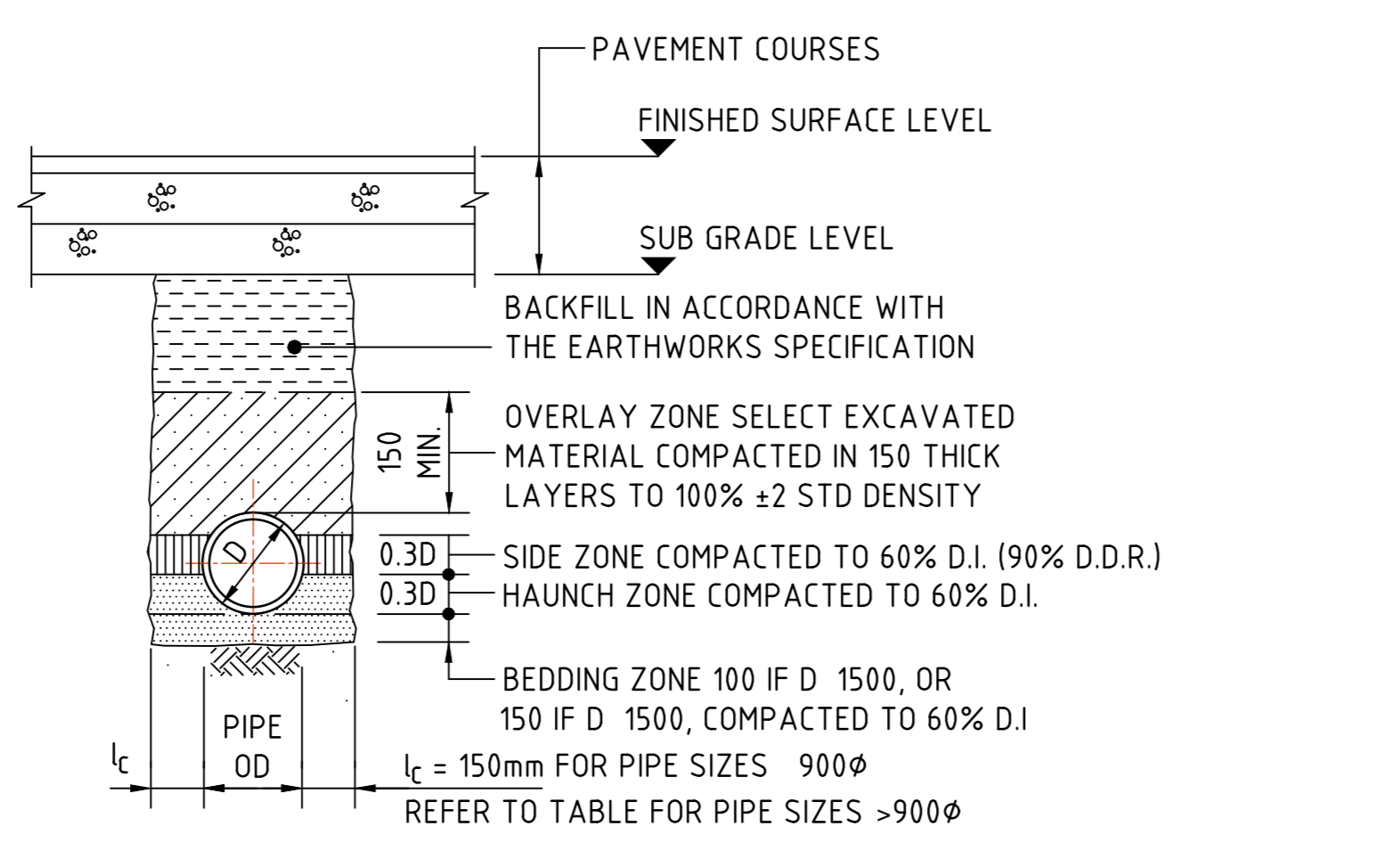
SEALED PIT - SP



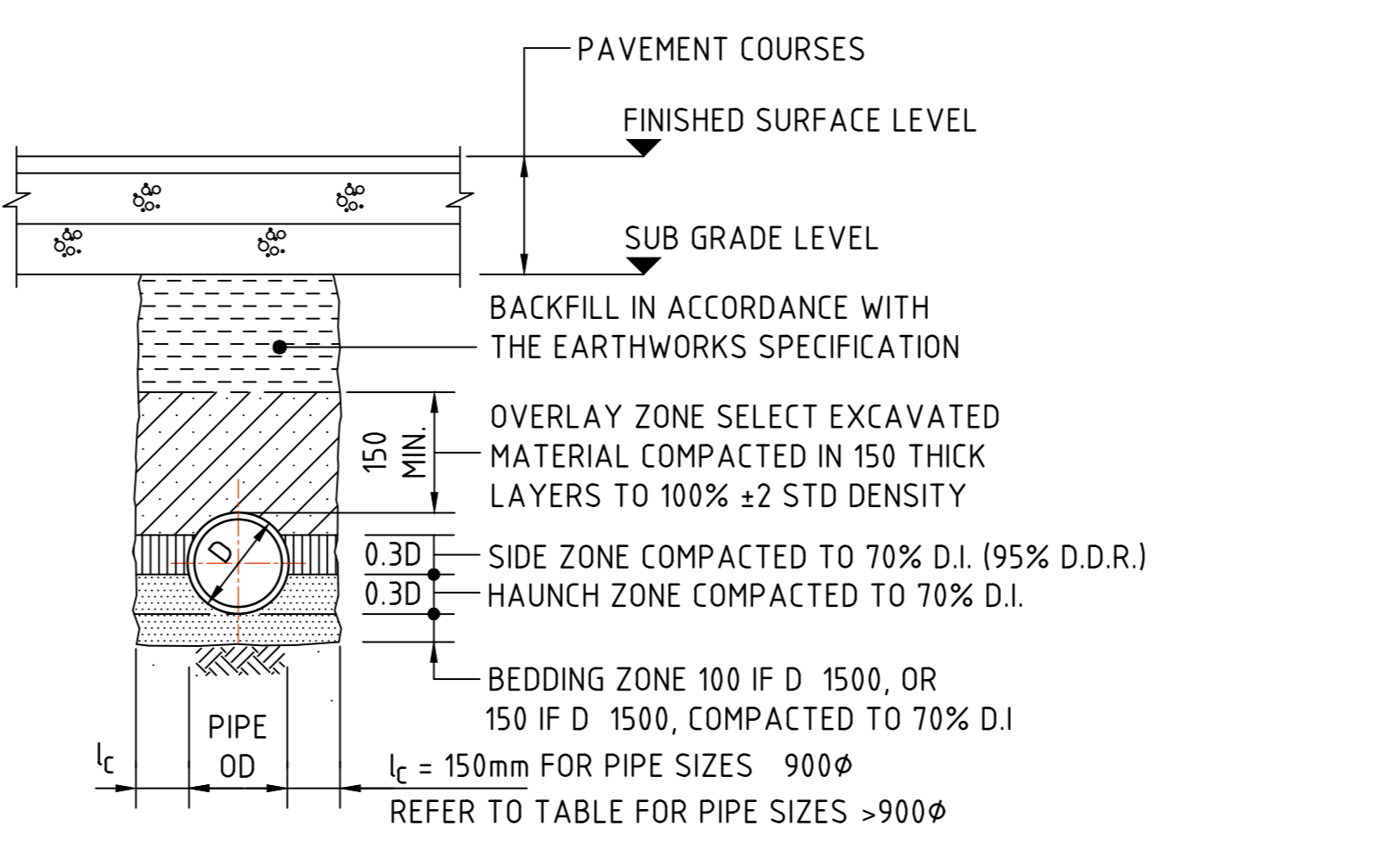
SJP/CIS & SGGP/CIS (CAST IN SLAB) PIT DETAIL GRATE/COVER SUPPORT CAST-INTO PAVEMENT SLAB
(ADOPT IN CONCRETE PAVEMENT FOR SGGP's & SJP's, WHERE PITS ARE LOCATED IN THE CORNER OF SLAB PANELS OR ADJACENT TO SLAB PANEL JOINTS)



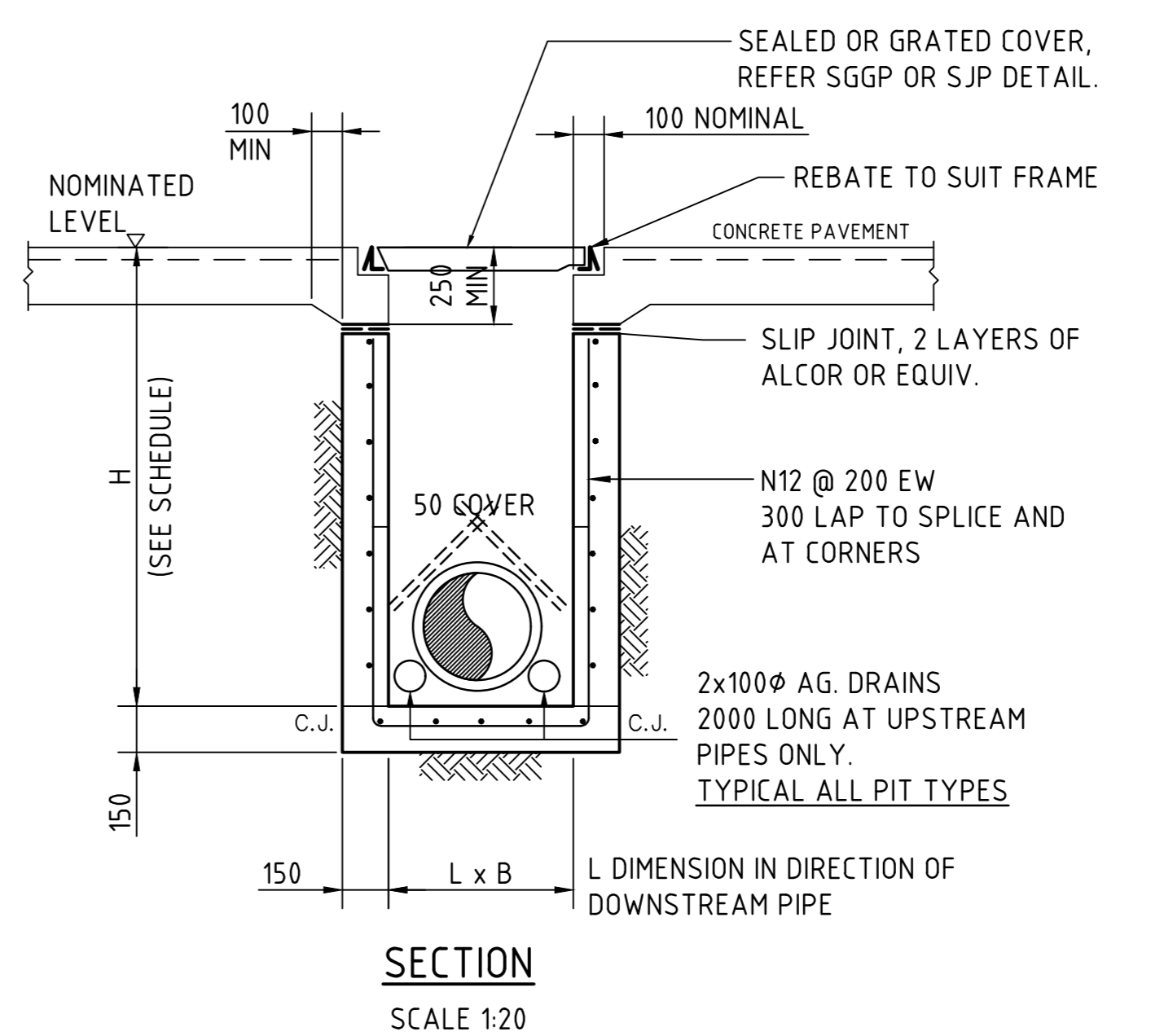
SUPPORT TO AGRICULTURAL DRAIN
FOR USE UNDER CAR PARK PAVEMENTS/LANDSCAPED AREAS
SCALE 1:20



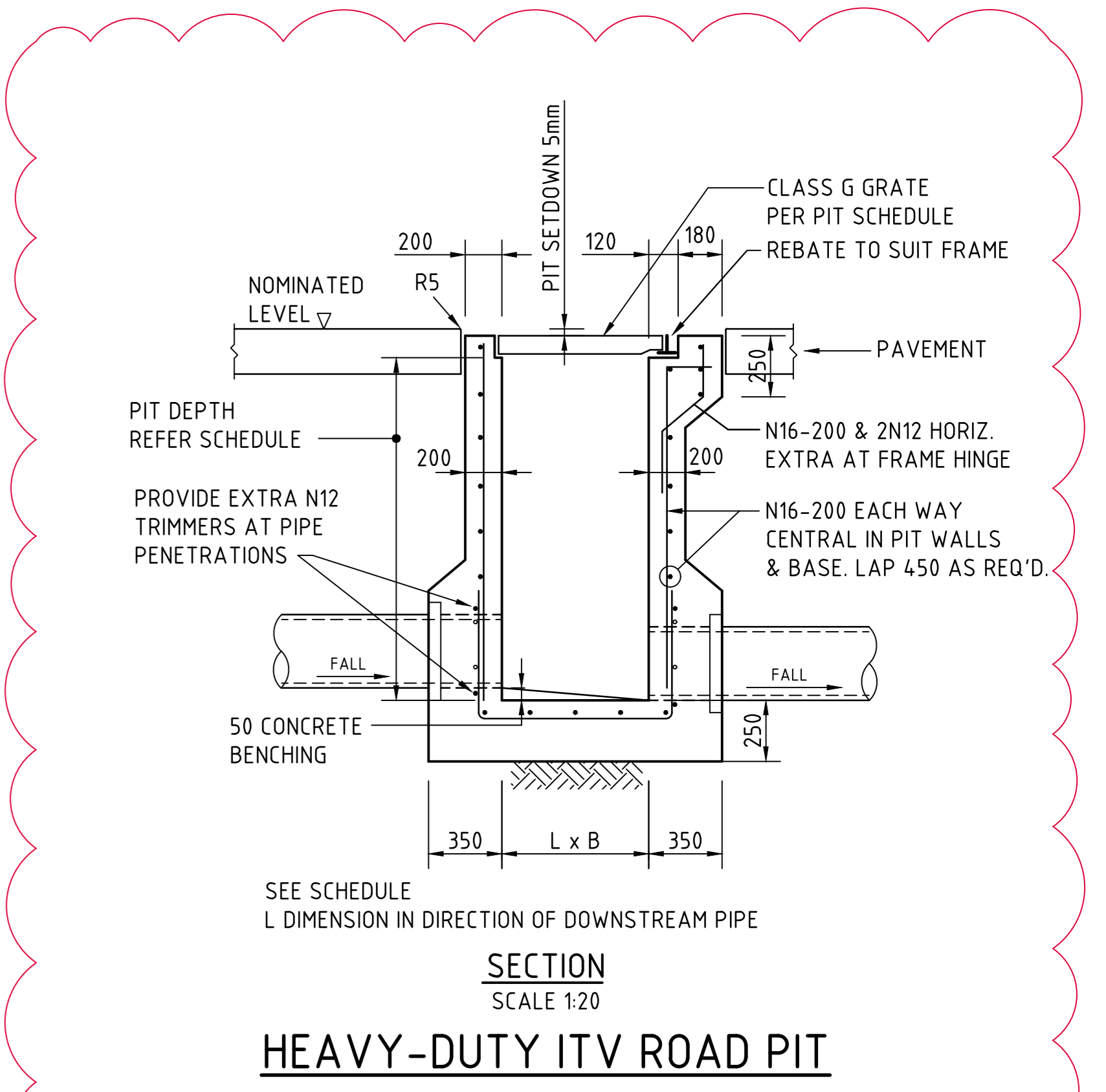
TYPE HS2 SUPPORT TO CONCRETE PIPES UNDER PAVEMENT
SCALE 1:20
D 1350, MAX FILL = 4.0m
D >1350, MAX FILL = 3.0m



TYPE HS3 SUPPORT TO CONCRETE PIPES UNDER PAVEMENT
SCALE 1:20
D 1050, MAX FILL = 6.0m
D >1050, MAX FILL = 4.8m



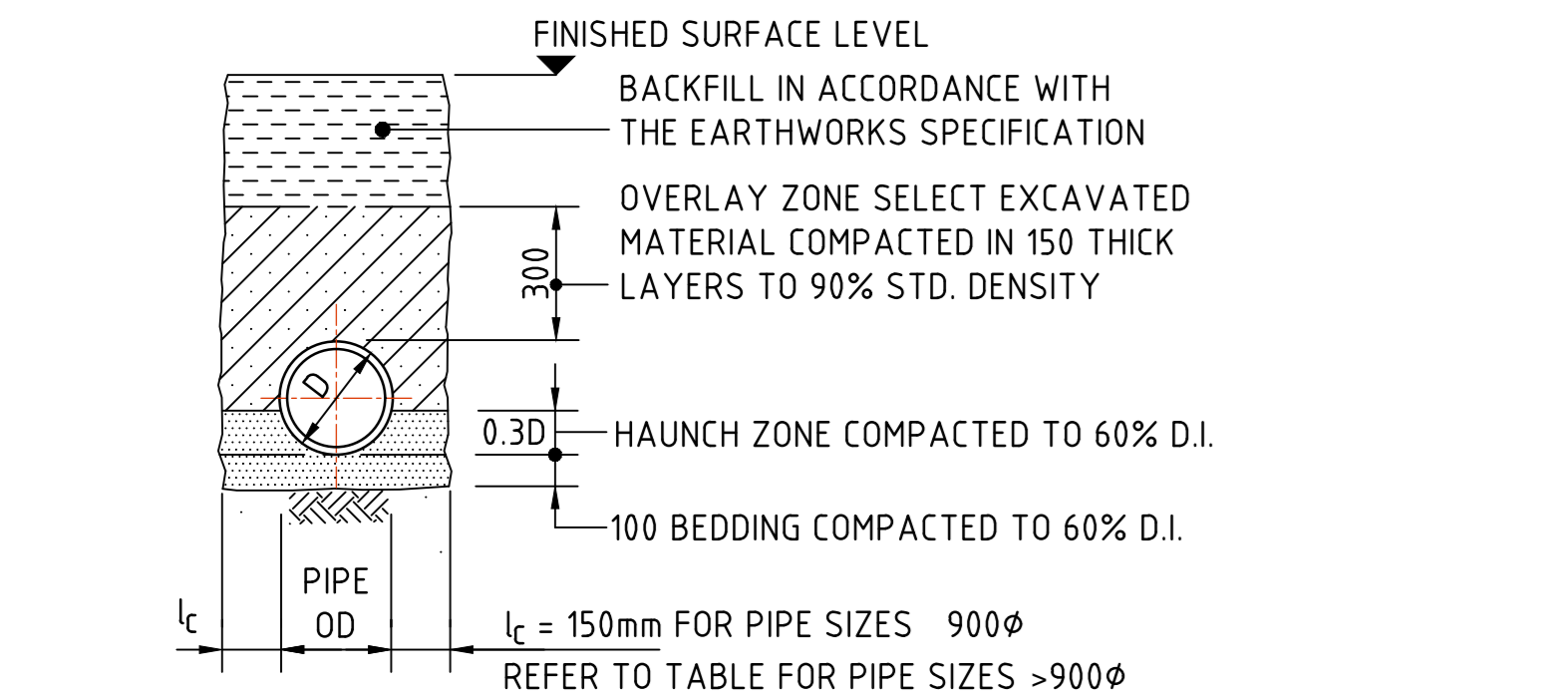
SJP/CIS & SGGP/CIS (CAST IN SLAB) PIT DETAIL GRATE/COVER SUPPORT CAST-INTO PAVEMENT SLAB
(ADOPT IN CONCRETE PAVEMENTS FOR SGGP's & SJP's, WHERE JOINTS ARE NOT LOCATED WITHIN PROXIMITY OF THE GRATE)



HEAVY-DUTY ITV ROAD PIT

TABLE 2 - ITV ROAD <1200mm SQUARE PIT REINFORCEMENT & WALL THICKNESS

DEPTH 'H'	WALL THICKNESS 'TW'	WALL REINFORCEMENT	BASE THICKNESS 'TB'	BASE REINFORCEMENT
< 2.0m	200mm	N16-200 EACH WAY	200mm	N16-200 EACH WAY
2.0m-3.0m	250mm	N16-200 EACH WAY	250mm	N16-200 EACH WAY
3.0m-6.0m	300mm	N16-200 EACH WAY	300mm	N16-200 EACH WAY



TYPE H1 SUPPORT TO CONCRETE PIPES AT LANDSCAPED AREAS
SCALE 1:20

BEDDING & HAUNCH MATERIAL GRADING

SIEVE SIZE (mm)	WEIGHT PASSING (%)
19.0	100
2.36	100 TO 50
0.60	90 TO 50
0.30	60 TO 10
0.15	25 TO 0
0.075	10 TO 0

SIDE ZONE WIDTH

PIPE SIZE (mm)	l _c (mm)
900φ	150
1050φ	175
1200φ	200
1350φ	225
1500φ	250
1650φ	275
1800φ	300

ENGINEER TO SPECIFY TRENCH WIDTHS FOR PIPE SIZES GREATER THAN 1800φ

BEDDING & HAUNCH MATERIAL GRADING

SIEVE SIZE (mm)	WEIGHT PASSING (%)
19.0	100
2.36	100 TO 50
0.60	90 TO 50
0.30	60 TO 10
0.15	25 TO 0
0.075	10 TO 0

SIDE ZONE WIDTH

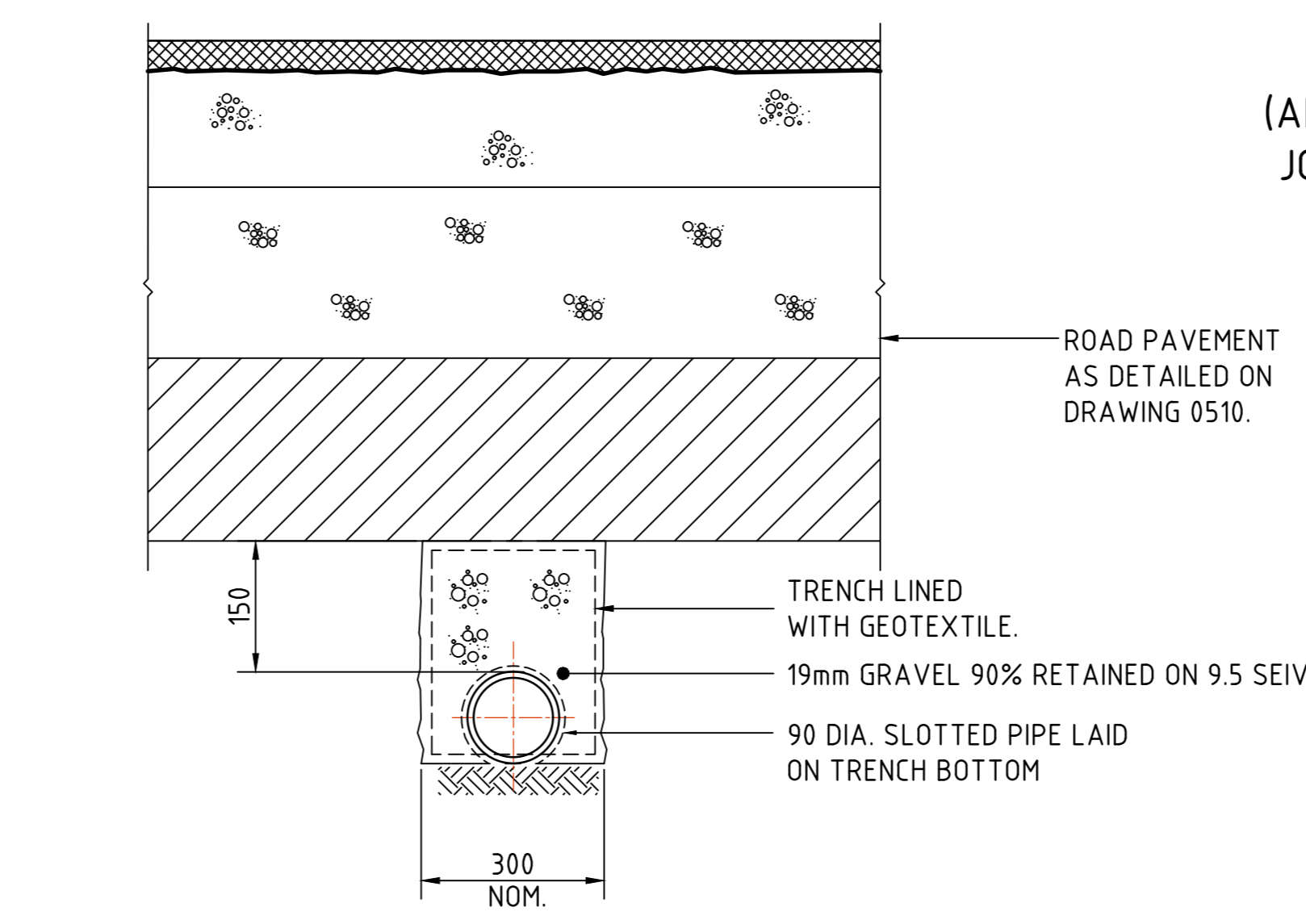
PIPE SIZE (mm)	l _c (mm)
900φ	150
1050φ	175
1200φ	200
1350φ	225
1500φ	250
1650φ	275
1800φ	300

ENGINEER TO SPECIFY TRENCH WIDTHS FOR PIPE SIZES GREATER THAN 1800φ

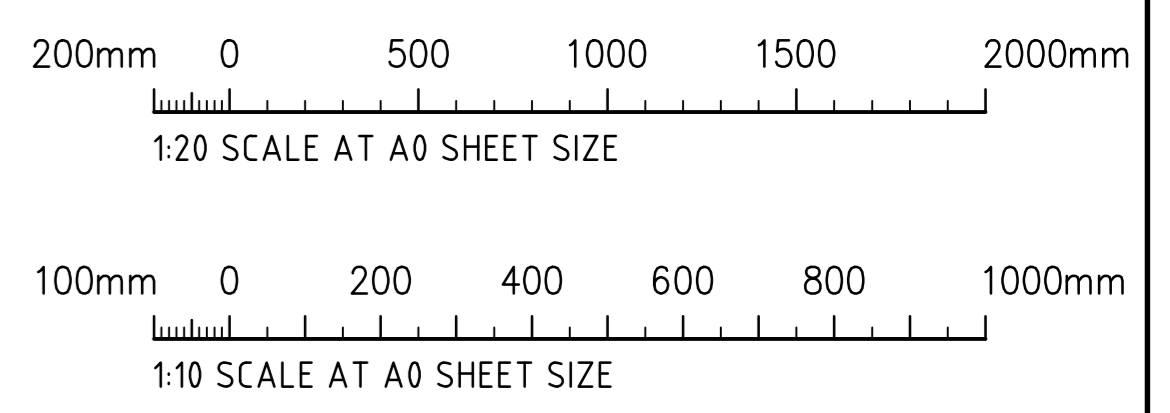
SIDE ZONE MATERIAL GRADING

SIEVE SIZE (mm)	WEIGHT PASSING (%)
75.0	100
9.5	100 TO 50
2.36	100 TO 50
0.60	50 TO 15
0.075	25 TO 0

SELECT FILL MATERIAL IN ACCORDANCE WITH TABLE 1 AS 3725



SUPPORT TO SUBSOIL DRAIN UNDER ROADWAY KERB
SCALE 1:10



FOR CONSTRUCTION