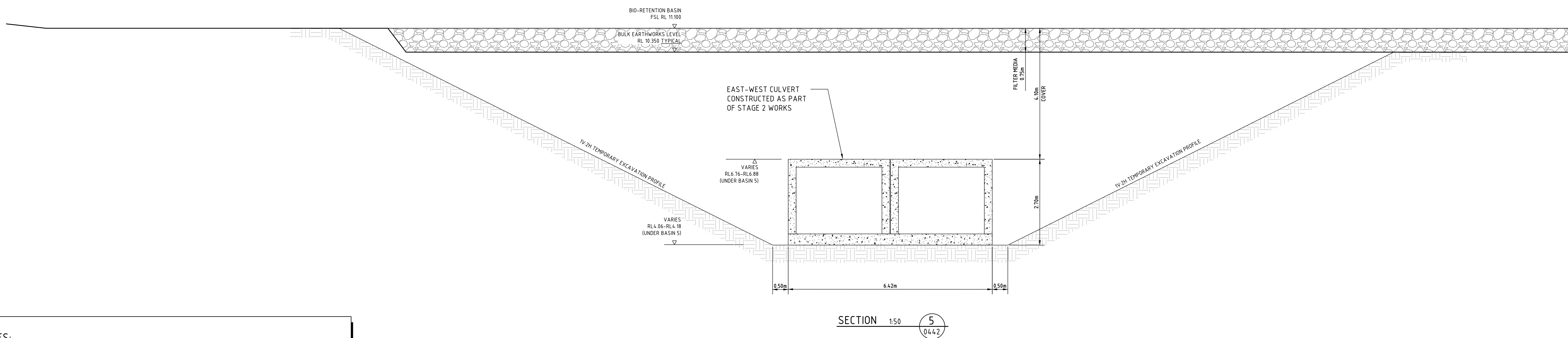


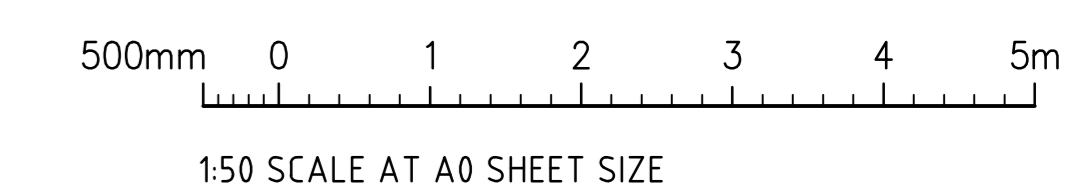
TEMPORARY OPEN SWALE FOR DISCHARGE OF UPSTREAM CATCHMENTS
 $Q_{100} = 24.86 \text{ m}^3/\text{s}$
 MANNINGS $n=0.05$, SLOPE = 1.7%
 FLOW DEPTH = 1.20m
 MIN. FREEBOARD = 2.0m

SECTION 150 0442 (4)



SECTION 150 0442 (5)

NOTES:
 EXTERNAL CONSULTANT NOTE:
 EXTERNAL DESIGNS SHOWN ARE INDICATIVE FOR PRICING PURPOSES ONLY.
 FOR FURTHER DESIGN INFORMATION, REFER TO THE BELOW RESPECTIVE CONSULTANT'S DESIGN PACKAGES.
 ARCADIS - MPW (MOOREBANK PRECINCT WEST LOOP ROAD - LPMW-ARC-CV-DWG)
 AURECON - INTS (INTERSTATE RAIL FACILITY - INTS-AUR-PV-SKC)
 AURECON - RALP (INTERMODAL TERMINAL DEVELOPMENT - N01031-PWD-DRG-GEN)
 NORTHRUP - MAUW (MOOREBANK AVENUE UPGRADE WORKS - MAUW-NRP-CV-DWG)
 NORTHRUP - MADR (MOOREBANK AVENUE DIVERSION ROAD - MADR-NRP-CV-DWG)
 NORTHRUP - MAAI (MOOREBANK AVENUE ANZAC ROAD INTERSECTION - MAAI-NRP-CV-DWG)



FOR CONSTRUCTION

AMENDMENTS	DATE	ISSUE	AMENDMENTS	DATE	ISSUE
REARRANGE DRAWING NUMBER FROM 0446 TO 0447	12.03.21	2			
PLAN NO LONGER USED	02.12.20	1			
NEW DRAWING NUMBER	22.05.20	0			



DESIGNED	DRAWN	DATE	CHECKED	SIZE	SCALE	CAD REF.
D.S.	D.S.	AUG 19	M.W.	A0	AS SHOWN	LPWPIW-COS-CV-DWG-0447

Costin Roe Consulting Pty Ltd.
 Consulting Engineers
 Level 1, 9 Windmill Street
 Walsh Bay, Sydney NSW 2000
 Tel: (02) 9251-7899 Fax: (02) 9241-3721
 email: mail@costinroe.com.au



DRAWING TITLE	ISSUE
EAST-WEST CULVERT SECTIONS - SHEET 2	2
DRAWING NO.	
LPWPIW-COS-CV-DWG-0447	