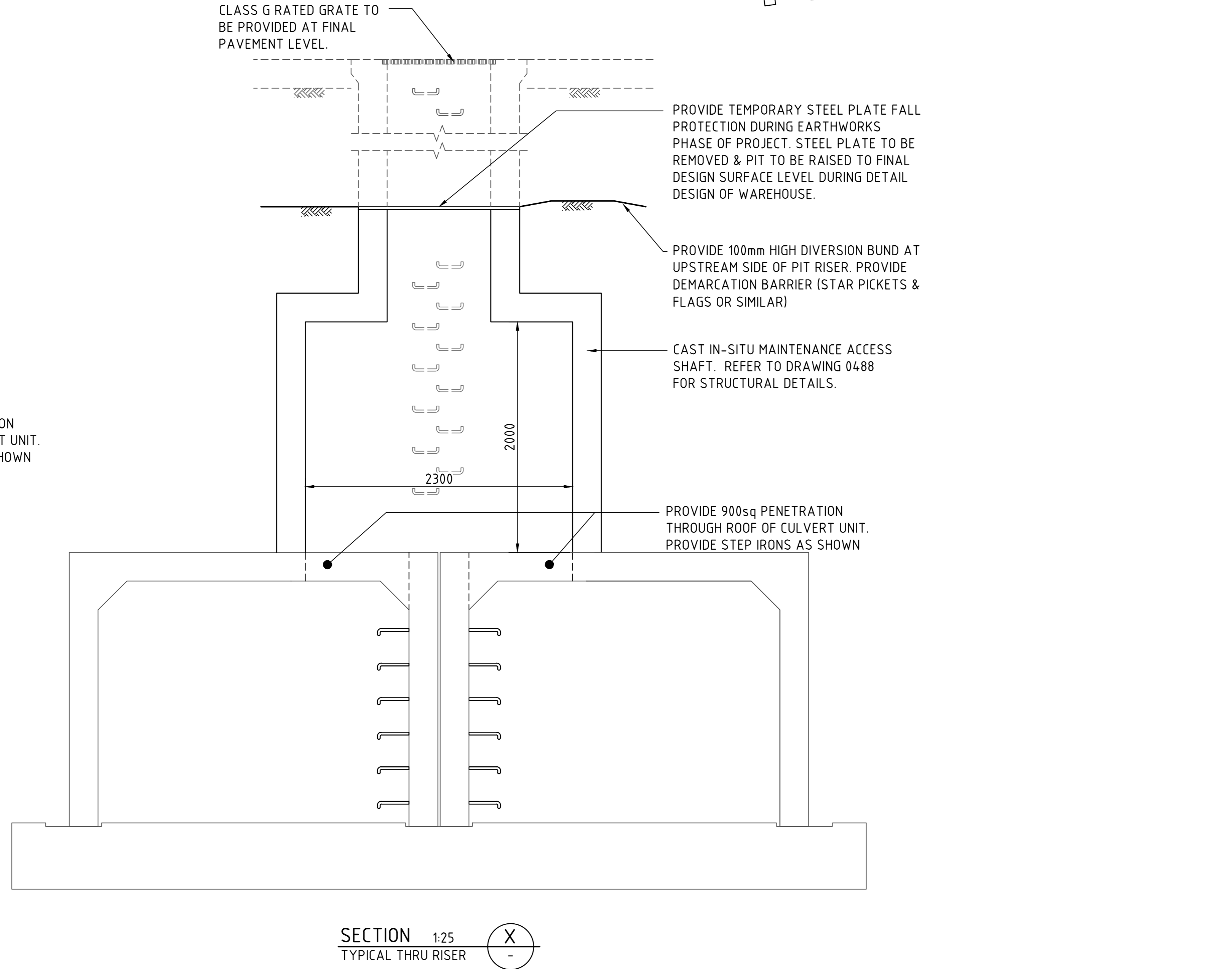
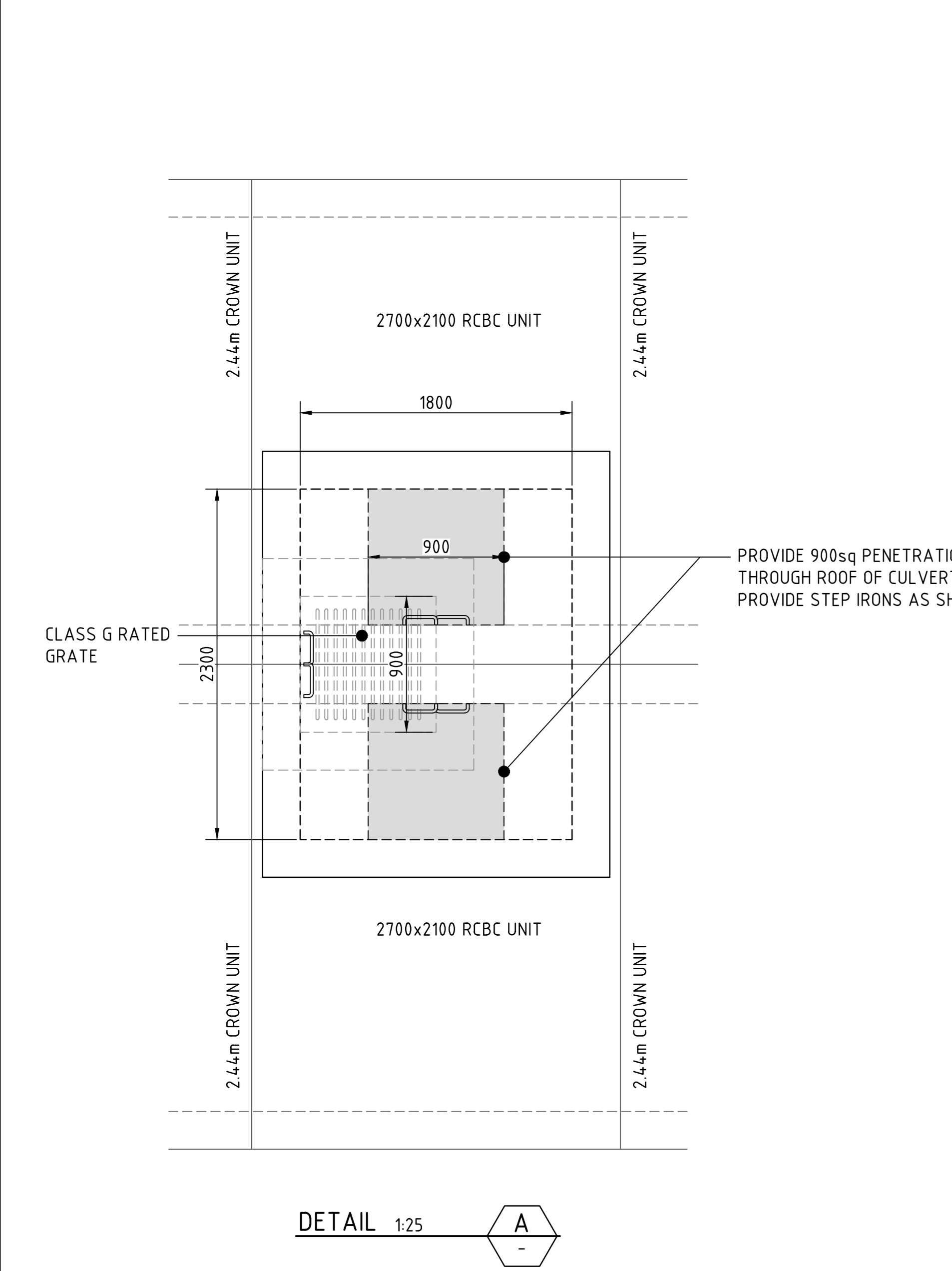
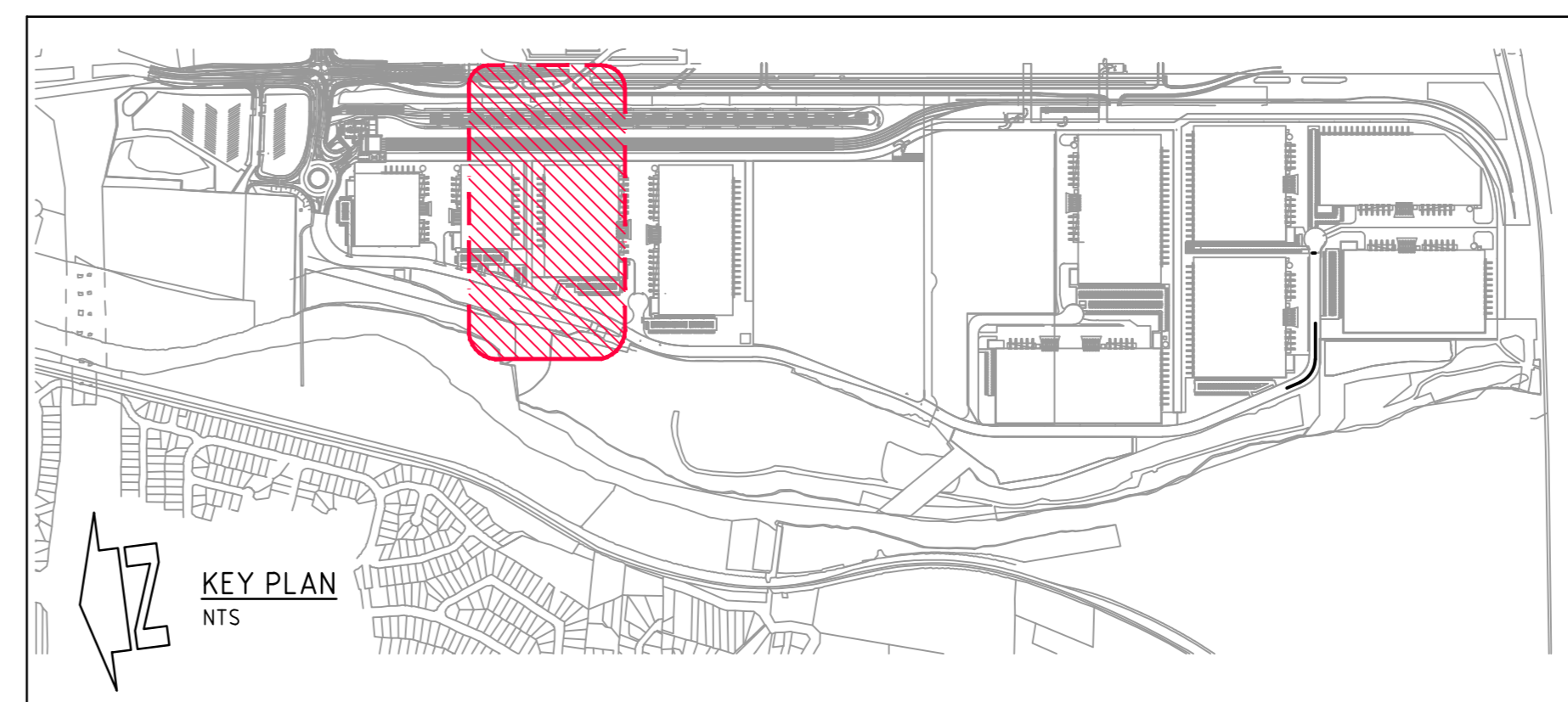


EAST-WEST CULVERT PLAN - FINAL STAGE  
1:500 SCALE



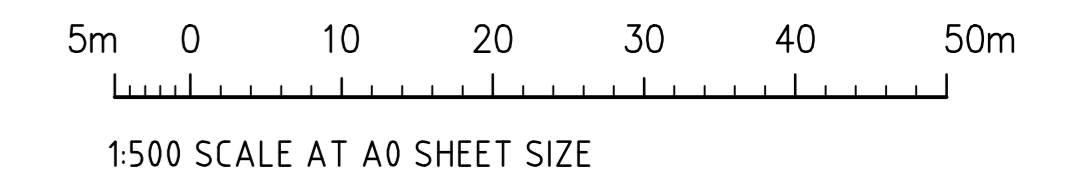
**NOTES:**  
FINAL STAGE OF WORKS INVOLVES COMPLETING THE CULVERT INFILL WORKS, CONNECTING THE UPSTREAM & DOWNSTREAM PORTIONS OF THE EAST-WEST CULVERT & THE FILLING REQUIRED TO TIE INTO THE PROPOSED ESTATE BULK EARTHWORKS AS DETAILED ON DRAWINGS LPWPIW-COS-CV-DWG-0300.

**NOTES:**  
EXTERNAL CONSULTANT NOTE:  
EXTERNAL DESIGNS SHOWN ARE INDICATIVE FOR PRICING PURPOSES ONLY.  
FOR FURTHER DESIGN INFORMATION, REFER TO THE BELOW RESPECTIVE CONSULTANT'S DESIGN PACKAGES.  
ARCADIS - MPW (MOOREBANK PRECINCT WEST LOOP ROAD - LPMW-ARC-CV-DWG)  
AURECON - INTS (INTERSTATE RAIL FACILITY - INTS-AUR-PV-SKC)  
AURECON - RALP (INTERMODAL TERMINAL DEVELOPMENT - N01031-PWD-DRG-GEN)  
NORTHROP - MAUW (MOOREBANK AVENUE UPGRADE WORKS - MAUW-NRP-CV-DWG)  
NORTHROP - MADR (MOOREBANK AVENUE DIVERSION ROAD - MADR-NRP-CV-DWG)  
NORTHROP - MAAI (MOOREBANK AVENUE ANZAC ROAD INTERSECTION - MAAI-NRP-CV-DWG)



**LEGEND:**

- ROUNDABOUT & LOOP ROAD BY NORTHROP
- MAAI BY NORTHROP
- MADR BY NORTHROP
- MAUW BY NORTHROP
- MOOREBANK INTERMODAL TERMINAL DEVELOPMENT BY AURECON
- INTERSTATE TERMINAL AND RAIL ACCESS BY AURECON
- OSD 10 BY NORTHROP
- OSD 9 BY ARCADIS
- EXISTING RCBC BASE SLAB
- FINAL RCBC BASE SLAB
- BIO-BANKING AREA



**FOR CONSTRUCTION**

REARRANGE DRAWING NUMBER AND TITLE	DATE	ISSUE	REVISIONS	DATE	ISSUE
REVISED FOR AMENDED INTERSTATE RAIL BOUNDARY	02.12.20	4	REVISED FOR MAINTENANCE ACCESS RISERS	16.09.21	11
REVISED AS CLOUDED	24.11.20	3	REVISED FOR MAINTENANCE ACCESS RISERS	10.09.21	10
REVISED DRAWING NAME FOR DIVERSION SWALE PROFILES	23.05.20	2	REVISED FOR MAINTENANCE ACCESS RISERS	23.06.21	9
ISSUED FOR CONSTRUCTION	07.04.20	1	REVISED FOR MAINTENANCE ACCESS RISERS	09.04.21	8
ISSUED FOR CONSTRUCTION	03.04.20	0	REVISED FOR MAINTENANCE ACCESS RISERS	04.06.21	7
AMENDMENTS			AMENDMENTS	26.05.21	6

DEVELOPER

ARCHITECT

PROJECT MANAGER

PROJECT

PRECINCT INFRASTRUCTURE WORKS WEST  
MOOREBANK AVENUE, MOOREBANK

Costin Roe Consulting Pty Ltd.  
Consulting Engineers  
Level 1, 8 Widdowall Street  
Wahlab Bay, Sydney NSW 2000  
Tel: (02) 9551-7899 Fax: (02) 9541-3721  
email: mail@costinroe.com.au

PRECISION | COMMUNICATION | ACCOUNTABILITY

DRAWING TITLE  
EAST-WEST CULVERT PLAN  
FINAL STAGE

DRAWING NO.  
LPWPIW-COS-CV-DWG-0443

ISSUE  
11