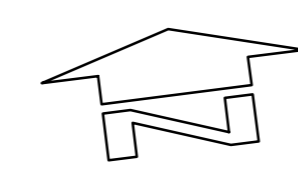


NOTES:

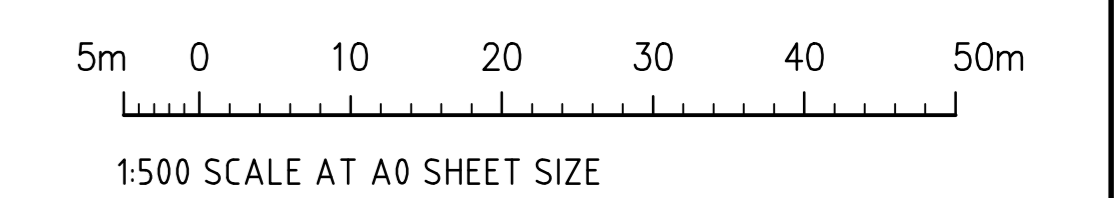
EXTERNAL CONSULTANT NOTE:
EXTERNAL DESIGNS SHOWN ARE INDICATIVE FOR PRICING PURPOSES ONLY.
FOR FURTHER DESIGN INFORMATION, REFER TO THE BELOW RESPECTIVE CONSULTANT'S DESIGN PACKAGES.
ARCADIS - MPW (MOOREBANK PRECINCT WEST LOOP ROAD - LPMW-ARC-CV-DWG)
AURECON - INTS (INTERSTATE RAIL FACILITY - INTS-AUR-PV-SKCI)
AURECON - RALP (INTERMODAL TERMINAL DEVELOPMENT - N01031-PWD-DRG-GEN)
NORTHROP - MAUW (MOOREBANK AVENUE UPGRADE WORKS - MAUW-NRP-CV-DWG)
NORTHROP - MADR (MOOREBANK AVENUE DIVERSION ROAD - MADR-NRP-CV-DWG)
NORTHROP - MAAI (MOOREBANK AVENUE ANZAC ROAD INTERSECTION - MAAI-NRP-CV-DWG)



EAST-WEST CULVERT PLAN - STAGE 3
1:500 SCALE

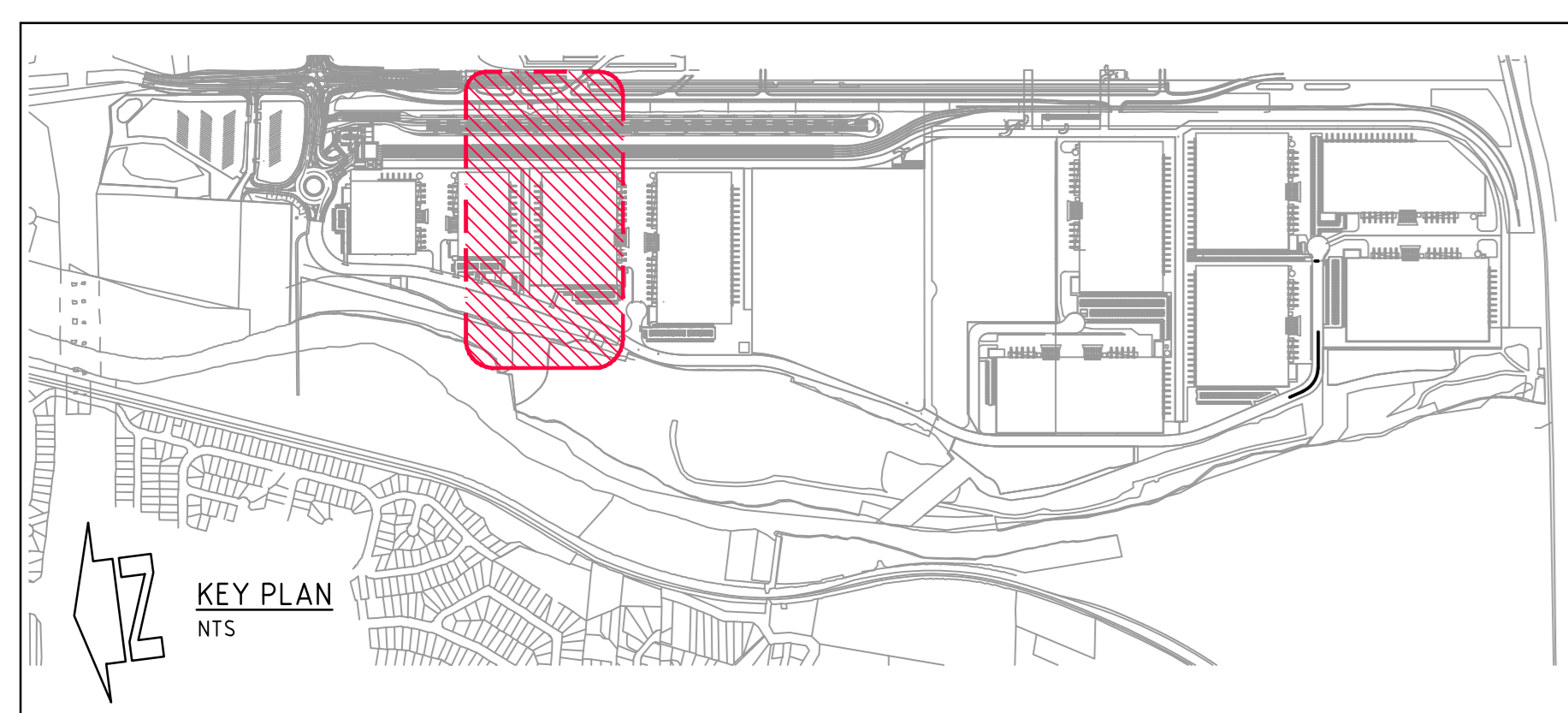
LEGEND:

- ROUNDABOUT & LOOP ROAD BY NORTHROP
- MAAI BY NORTHROP
- MADR BY NORTHROP
- MAUW BY NORTHROP
- MOOREBANK INTERMODAL TERMINAL DEVELOPMENT BY AURECON
- INTERSTATE TERMINAL AND RAIL ACCESS BY AURECON
- OSD 10 BY NORTHROP
- OSD 9 BY ARCADIS
- RCBC BASE SLAB
- BIO-BANKING AREA



NOTES:

STAGE 3 WORKS IS PROPOSED AFTER MPW FILLING WORKS HAVE BEEN COMPLETED. CULVERT WORKS INVOLVE THE COMMISSIONING OF THE UPSTREAM & DOWNSTREAM PORTIONS OF THE EAST-WEST CULVERT, THE DECOMMISSIONING OF THE REMAINDER OF THE EXISTING CHANNEL & THE GRADING REQUIRED TO TIE INTO THE PROPOSED ESTATE BULK EARTHWORKS AS DETAILED ON DRAWINGS LPWPIW-COS-CV-DWG-0300.



FOR CONSTRUCTION

ISSUED FOR CONSTRUCTION	DATE	ISSUE	REVISIONS	DATE	ISSUE	DEVELOPER
ISSUED FOR CONSTRUCTION	07.04.20	1	REVISED AS CLOUDED	12.03.21	7	MOOREBANK
ISSUED FOR CONSTRUCTION	03.04.20	0	REVISED FOR UPDATED INTERSTATE BOUNDARY	02.12.20	6	MOOREBANK
ISSUED FOR INFORMATION	21.02.20	F	REVISED AS CLOUDED	24.11.20	5	MOOREBANK
50% DESIGN COMPLETION	17.02.20	E	CONSTRAINTS MAPPING ADDED	02.11.20	4	MOOREBANK
ISSUED FOR INFORMATION	14.02.20	D	REVISED CULVERT END TREATMENT DETAILING	22.04.20	3	MOOREBANK
ISSUED FOR INFORMATION	20.12.19	C	UPDATED CONSTRUCTION STAGING	20.05.20	2	MOOREBANK
AMENDMENTS	DATE	ISSUE	AMENDMENTS	DATE	ISSUE	MOOREBANK

ARCHITECT
watson young

PROJECT MANAGER
J. WYNDHAM PRINCE
CONSULTING CIVIL INFRASTRUCTURE ENGINEERS & PROJECT MANAGERS

PROJECT
PRECINCT INFRASTRUCTURE WORKS WEST
MOOREBANK AVENUE, MOOREBANK

CONSULTING ENGINEERS
Costin Roe Consulting Pty Ltd.
Consulting Engineers
Level 1, 9 Windmill Street
Wahlab Bay, Sydney NSW 2000
Tel: (02) 9251-7899 Fax: (02) 9241-3721
email: mail@costinroe.com.au

DESIGNED	DRAWN	CHECKED	DATE	SCALE	CAD REF
D.S.	D.S.	M.W.	AUG 19	AS SHOWN	LPWPIW-COS-CV-DWG-0442

PRECISION | COMMUNICATION | ACCOUNTABILITY

Costin Roe Consulting

DRAWING TITLE
EAST-WEST CULVERT PLAN STAGE 3
DRAWING NO.
LPWPIW-COS-CV-DWG-0442
ISSUE
7