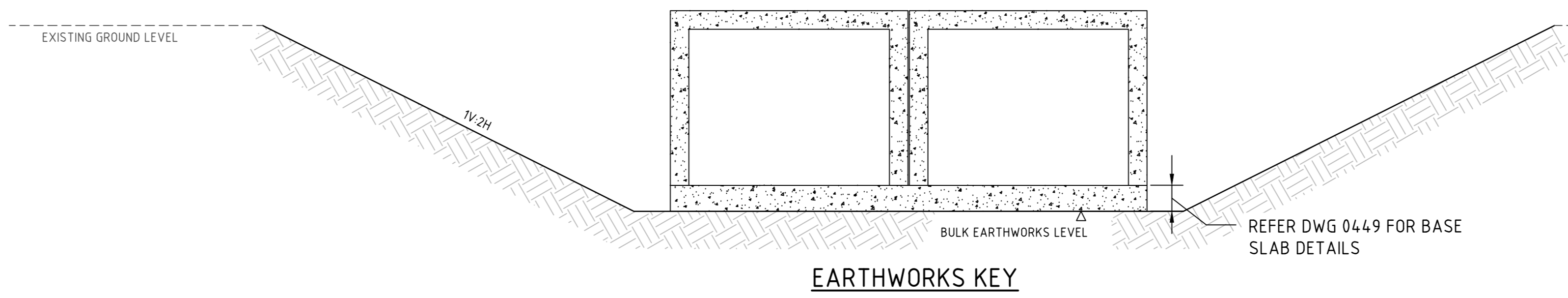
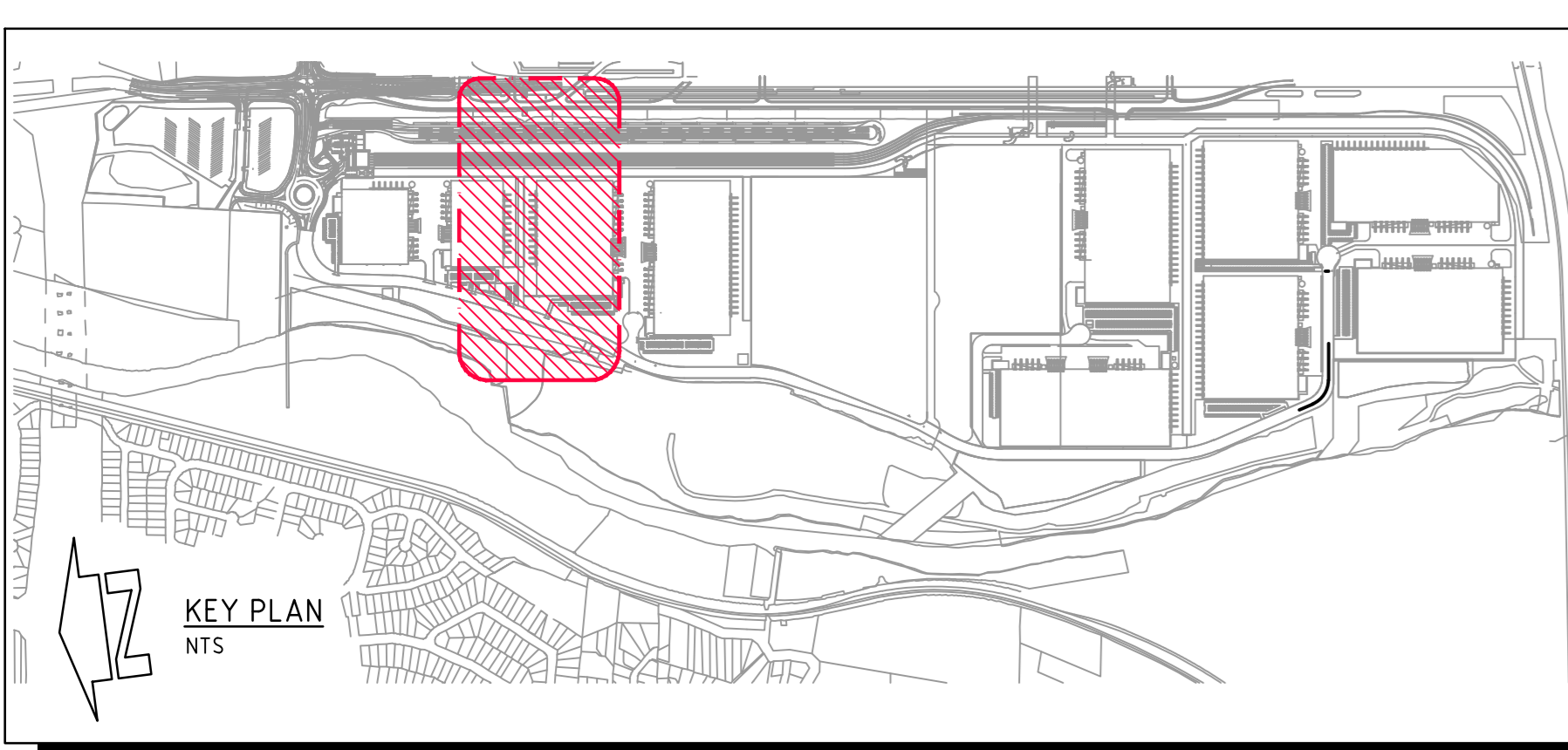


EAST-WEST CULVERT PLAN - STAGE 2 WORKS
1:500 SCALE

NOTES:
EXTERNAL CONSULTANT NOTE:
EXTERNAL DESIGNS SHOWN ARE INDICATIVE FOR PRICING PURPOSES ONLY.
FOR FURTHER DESIGN INFORMATION, REFER TO THE BELOW RESPECTIVE CONSULTANT'S DESIGN PACKAGES.
ARCADIS - MPW (MOOREBANK PRECINCT WEST LOOP ROAD - LPMW-ARC-CV-DWG)
AURECON - INTS (INTERSTATE RAIL FACILITY - INTS-AUR-PV-SKC)
AURECON - RALP (INTERMODAL TERMINAL DEVELOPMENT - N01031-PWD-DRG-GEN)
NORTHROP - MAUW (MOOREBANK AVENUE UPGRADE WORKS - MAUW-NRP-CV-DWG)
NORTHROP - MADR (MOOREBANK AVENUE DIVERSION ROAD - MADR-NRP-CV-DWG)
NORTHROP - MAAI (MOOREBANK AVENUE ANZAC ROAD INTERSECTION - MAAI-NRP-CV-DWG)



No.	FROM DEPTH	TO DEPTH	COLOUR	DEPTH RANGE VOLUME
1	-9.000	-8.000	[Red]	104m ³
2	-8.000	-7.000	[Dark Red]	100m ³
3	-7.000	-6.000	[Red]	1451m ³
4	-6.000	-5.000	[Dark Red]	1876m ³
5	-5.000	-4.000	[Red]	2307m ³
6	-4.000	-3.000	[Dark Red]	3066m ³
7	-3.000	-2.000	[Red]	4658m ³
8	-2.000	-1.000	[Dark Red]	6014m ³
9	-1.000	0.000	[Red]	7269m ³
10	0.000	1.000	[Dark Red]	2m ³
11	1.000	2.000	[Red]	0m ³

EARTHWORKS VOLUMES
CUT TO EXISTING LEVEL = - 27,000 m³
FILL TO EXISTING LEVEL = + 0 m³

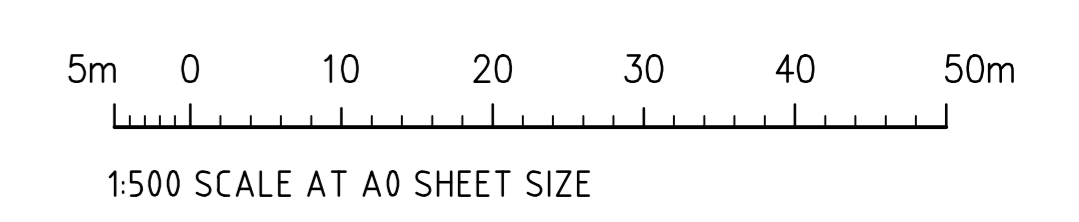
BALANCE (IMPORT) = - 27,000 m³ (i.e. EXPORT)

EARTHWORK VOLUMES ARE APPROXIMATE ONLY.
NO ALLOWANCE HAS BEEN MADE IN THE ABOVE VOLUMES FOR BULKING OR COMPACTION OF FILLED SOILS, EROSION AND SEDIMENT CONTROL BASINS AND MEASURES, THE REMOVAL OF UNCONTROLLED FILL, TOPSOIL STRIP OR CONTAMINATED MATERIAL, TEMPORARY DRAINAGE SWALES WITHIN BUILDING PADS, OR ANY OTHER UNSPECIFIED EXCAVATION RELATED TO FUTURE WAREHOUSE CONSTRUCTION.

NOTE
STAGE 2 EAST-WEST CULVERT WORKS INVOLVE THE TEMPORARY CUT AND COVER WORKS ALONG THE CULVERT BASE TO THE NOMINATED EXTENTS. WATER FROM MPE IS TO BE DISCHARGED THROUGH THE EXISTING CHANNEL AND DIVERSIONS PROVIDED AS PART OF STAGE 1 WORKS.

LEGEND:

- [Pink Hatched] - ROUNDABOUT & LOOP ROAD BY NORTHROP
- [Purple Hatched] - MAAI BY NORTHROP
- [Blue Hatched] - MADR BY NORTHROP
- [Red Hatched] - MAUW BY NORTHROP
- [Green Hatched] - MOOREBANK INTERMODAL TERMINAL DEVELOPMENT BY AURECON
- [Light Green Hatched] - INTERSTATE TERMINAL AND RAIL ACCESS BY AURECON
- [Dark Blue Hatched] - OSD 10 BY NORTHROP
- [Cyan Hatched] - OSD 9 BY ARCADIS



FOR CONSTRUCTION

REVISED STAGING WORKS	DATE	ISSUE	DEVELOPER
ISSUED FOR CONSTRUCTION	22.05.20	2	
ISSUED FOR INFORMATION ONLY	07.04.20	1	
ISSUED FOR INFORMATION ONLY	03.04.20	0	
ISSUED FOR INFORMATION ONLY	21.02.20	C	REVISED AS CLOUDED
ISSUED FOR INFORMATION ONLY	14.02.20	B	REVISED FOR AMENDED INTERSTATE RAIL BOUNDARY
ISSUED FOR INFORMATION ONLY	20.12.19	A	CONSTRAINTS MAPPING ADDED
AMENDMENTS	DATE	ISSUE	

DEVELOPER

ARCHITECT

PROJECT MANAGER

PROJECT

PRECINCT INFRASTRUCTURE WORKS WEST
MOOREBANK AVENUE, MOOREBANK

Costin Roe Consulting Pty Ltd.
Consulting Engineers
Level 1, 9 Windmill Street
Wahlab Bay, Sydney NSW 2000
Tel: (02) 9251-7899 Fax: (02) 9241-3721
email: mail@costinroe.com.au

Costin Roe Consulting

PRECISION | COMMUNICATION | ACCOUNTABILITY

DRAWING TITLE
EAST-WEST CULVERT PLAN STAGE 2

DRAWING No. LPWPIW-COS-CV-DWG-0441

ISSUE 5