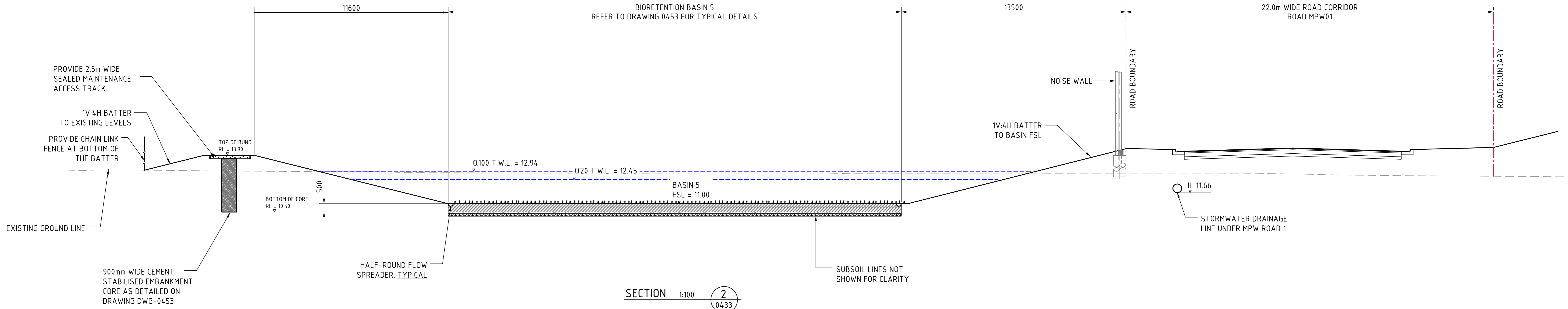
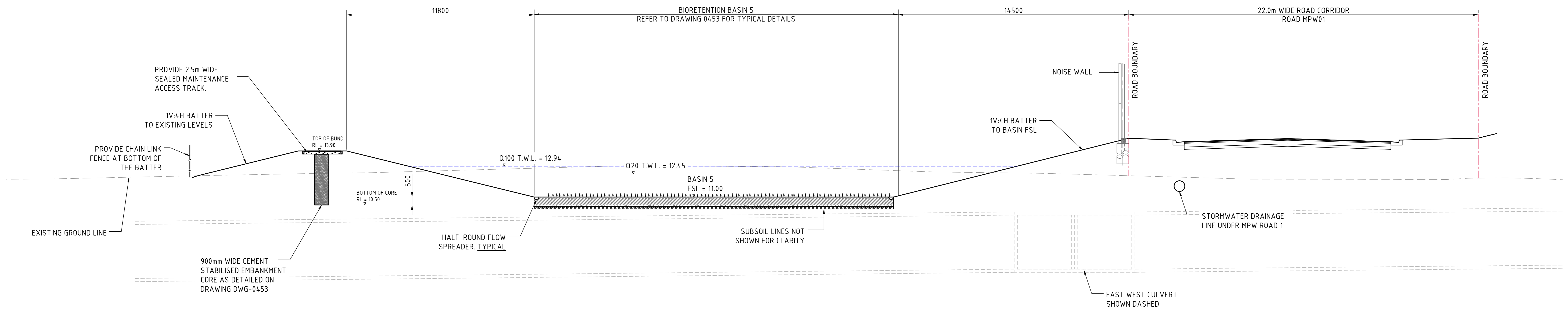


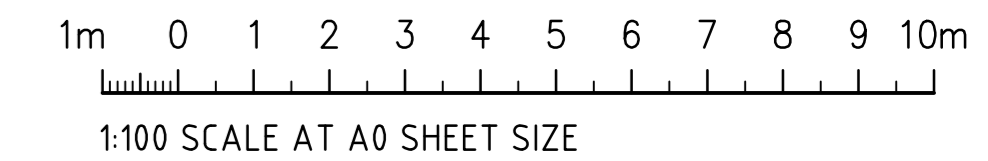
SECTION 1:100 (1/0433)



SECTION 1:100 (2/0433)



SECTION 1:100 (3/0433)



FOR CONSTRUCTION

AMENDMENTS	DATE	ISSUE	AMENDMENTS	DATE	ISSUE
REVISED FOR ENVIRONMENTAL CAPPING	22.06.20	2			
REVISED FOR ENVIRONMENTAL CAPPING	25.05.20	1			
ISSUED FOR CONSTRUCTION	03.04.20	0			
50% DESIGN COMPLETION	17.02.20	C	REVISED FOR AMENDED BASIN GEOMETRY	01.02.21	5
ISSUED FOR POST APPROVALS	29.11.19	B	REVISED AS CLOUDED	16.11.20	4
PRELIMINARY ISSUE ONLY	22.11.19	A	REVISED FOR ENVIRONMENTAL CAPPING & EMBANKMENT CORE	11.11.20	3

DEVELOPER

ARCHITECT

PROJECT MANAGER

PROJECT

PRECINCT INFRASTRUCTURE WORKS WEST
MOOREBANK AVENUE, MOOREBANK

Costin Roe Consulting Pty Ltd.
Consulting Engineers

Level 1, 8 Windmill Street
Wahlab Bay, Sydney NSW 2000
Tel: (02) 9551-7899 Fax: (02) 9541-3721
email: mail@costinroe.com.au

Costin Roe Consulting

PRECISION | COMMUNICATION | ACCOUNTABILITY

DRAWING TITLE

BASIN 5 SECTIONS

DRAWING No. LPWPIW-COS-CV-DWG-0436

ISSUE 5