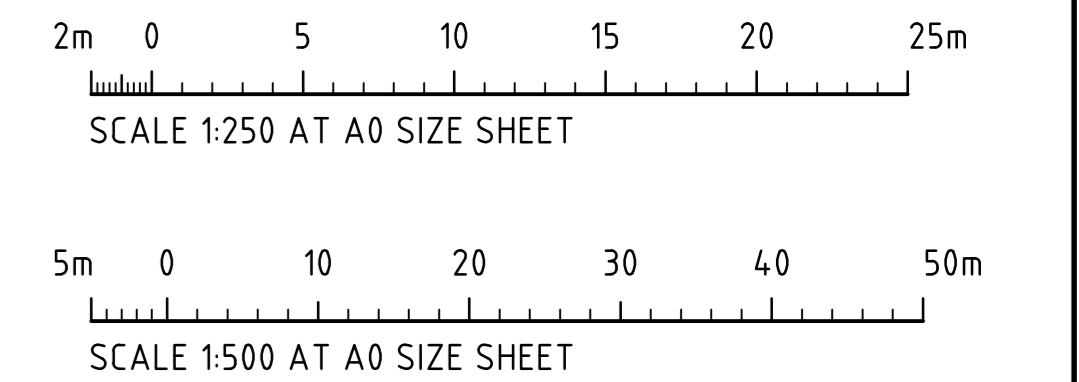


**BASIN CAPPING NOTE:**  
 CONTRACTOR TO PROVIDE FIBRE REINFORCED CONCRETE ENVIRONMENTAL CAPPING UNDER ENTIRE BASIN 6 AND 8 FOOTPRINT AS SHOWN ON THE ADJACENT. BASIN CAPPING TO BE CONSTRUCTED IN COORDINATION WITH SUBSOIL DRAINAGE LINES, BASIN INLET PITS ETC. REFER TO DETAILS ON DRAWING DWG-0456. REMEDIATION & VALIDATION TO BE CONFIRMED IN ACCORDANCE WITH THE ENVIRONMENTAL CONSULTANT'S ADVICE.

**LEGEND:**  
 LEVELS DATUM IS AHD.

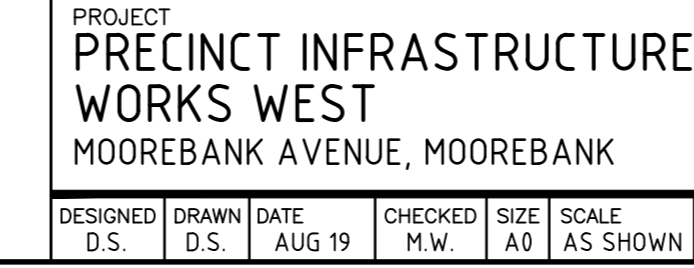
EXISTING SITE LEVELS AND DETAILS BASED ON SURVEY INFORMATION PROVIDED BY CARDNO DATED 01.05.2019

	- SGGP, SINGLE GRATED GULLY PIT		- CONCRETE BASIN LINER
	- SJP, SEALED JUNCTION PIT		- BIO-BANKING BOUNDARY
	- KIP, KERB INLET PIT		- OPERATIONAL BOUNDARY
	- PROPOSED DRAINAGE LINE		- EDGE OF BANK
	- OVERLAND FLOW DIRECTION		- SITE BOUNDARY
	- 50.00 - FINISHED PAVEMENT CONTOUR (MAJOR) 1.0m INTERVALS		- BASIN LINER CONSTRUCTION JOINT
	- 50.25 - FINISHED PAVEMENT CONTOUR (MINOR) 0.25m INTERVALS		
	- DENOTES CONCRETE PAVEMENT		



**FOR CONSTRUCTION**

ISSUED FOR CONSTRUCTION	25.05.20	1	REVISED ROAD CHAINAGES	18.02.21	7	DEVELOPER
ISSUED FOR CONSTRUCTION	03.04.20	0	REVISED BASIN DETAILING	22.01.21	6	
50% DESIGN COMPLETION	27.03.20	1	REVISED BASIN CAPPING DETAILING & SETOUT	11.12.20	5	
50% DESIGN COMPLETION	17.02.20	H	REVISED BASIN CAPPING NOTE	12.10.20	4	
ISSUED FOR POST APPROVALS	29.11.19	G	REVISED PER CLIENT COMMENTS	09.10.20	3	
PRELIMINARY ISSUE ONLY	22.11.19	F	ISSUED FOR CONSTRUCTION	22.06.20	2	
AMENDMENTS	DATE	ISSUE	AMENDMENTS	DATE	ISSUE	



DRAWING TITLE	BASIN 6 PLAN
DRAWING No.	LPWPIW-COS-CV-DWG-0434
ISSUE	7

PRECISION | COMMUNICATION | ACCOUNTABILITY