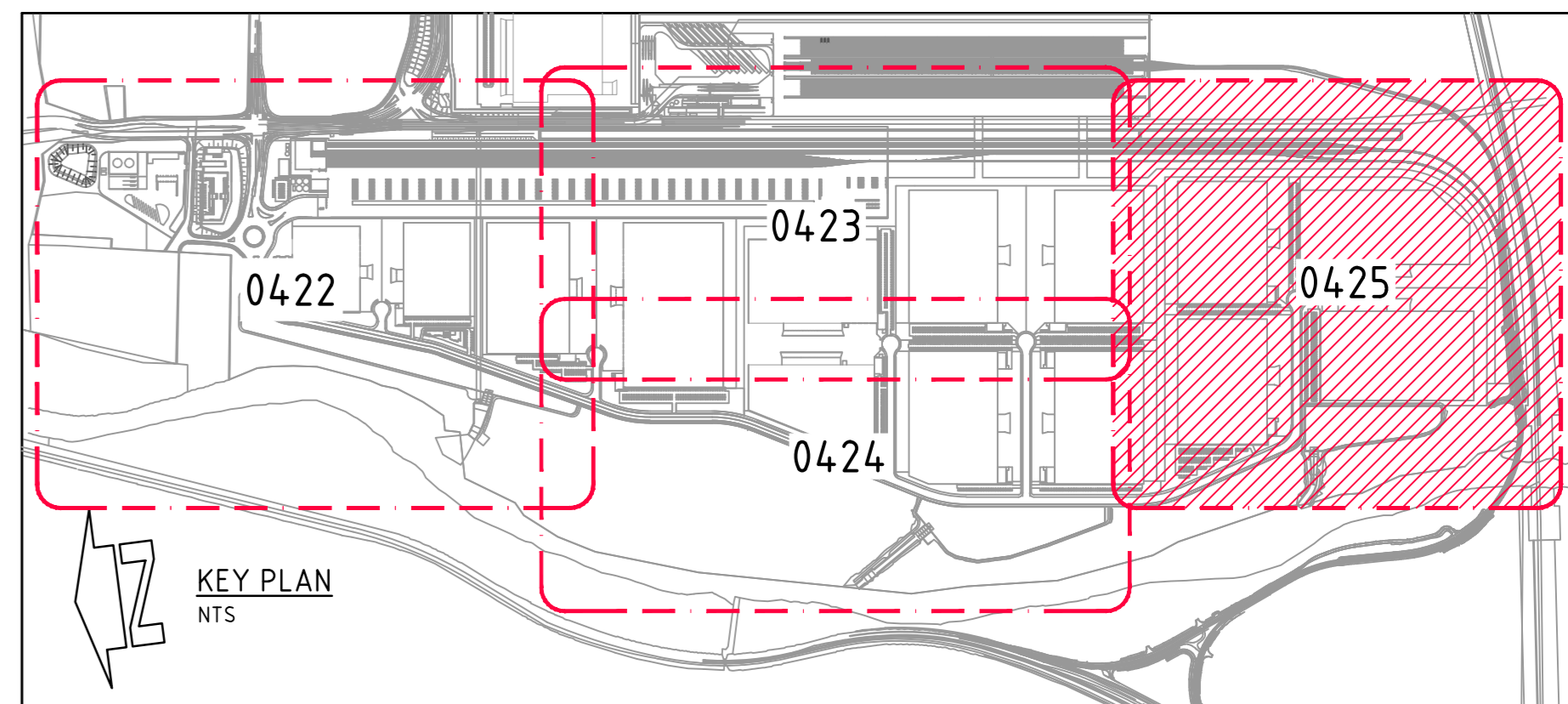
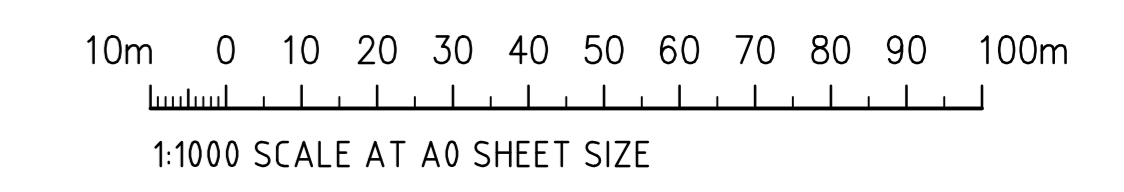


SUB-CATCHMENTS - DRAINS	
CAT/PIT	CATCHMENT AREA (Ha)
CAT 8-WH10 CARPARK	1.133
CAT 8-WH10 SOUTH	3.242
CAT 8-WH9 SOUTH	3.261
CAT 8-WH11 WEST	4.646
CAT 8-WH12 EAST	3.969
CAT 8-WH12 WEST	3.903
CAT 8-RALP	2.911
PIT R8-A01/01	0.066
PIT R8-A01/02	0.055
PIT R8-A01/03	0.103
PIT R8-A01/04	0.042
PIT R8-A01/05	0.008
PIT R8-A01/06	0.038
PIT R8-A01/07	0.036
PIT R8-A02/01	0.123
PIT R8-A03/01	0.051
PIT R8-A04/01	0.045
PIT R8-A05/01	0.034
PIT R8-B01/01	0.115
PIT R8-B01/02	0.112
PIT R8-B01/03	0.06
PIT R8-B01/04	0.06
PIT R8-B01/05	0.079
PIT R8-B02/01	0.072
PIT R8-B03/01	0.06
PIT R8-B04/01	0.095

NOTES:
 EXTERNAL CONSULTANT NOTE:
 EXTERNAL DESIGNS SHOWN ARE INDICATIVE FOR PRICING PURPOSES ONLY.
 FOR FURTHER DESIGN INFORMATION, REFER TO THE BELOW RESPECTIVE CONSULTANT'S DESIGN PACKAGES.
 ARCADIS - MPW (MOOREBANK PRECINCT WEST LOOP ROAD - LPWV-ARC-CV-DWG)
 AURECON - INT'S INTERSTATE RAIL FACILITY - INTS-AUR-PV-SKC)
 AURECON - RALP (INTERMODAL TERMINAL DEVELOPMENT - N01031-PWD-DRG-GENI)
 NORTHROP - MAUW (MOOREBANK AVENUE UPGRADE WORKS - MAUW-NRP-CV-DWG)
 NORTHROP - MADR (MOOREBANK AVENUE DIVERSION ROAD - MADR-NRP-CV-DWG)
 NORTHROP - MAAI (MOOREBANK AVENUE ANZAC ROAD INTERSECTION - MAAI-NRP-CV-DWG)



DRAINS CATCHMENT PLAN - SHEET 4
 1:1000 SCALE



FOR CONSTRUCTION

AMENDMENTS	DATE	ISSUE
ISSUED FOR CONSTRUCTION	30.04.20	0
50% DESIGN COMPLETION	17.02.20	B
ISSUED FOR POST APPROVALS	29.11.19	A

DEVELOPER: **MOOREBANK** **QUBE**

ARCHITECT: **REIDCAMPBELL**
 Architecture, Interiors, Project Management
 Level 10, 124 Waterloo Street
 North Sydney NSW 2060 Australia
 Tel: 61 (0) 2 9551 0211 Email: reidcampbell.com.au
 Fax: 61 (0) 2 9551 0218 Web: www.reidcampbell.com.au

PROJECT MANAGER: **J. WYNDHAM PRINCE**
 CONSULTING CIVIL INFRASTRUCTURE ENGINEERS
 & PROJECT MANAGERS

PROJECT: **PRECINCT INFRASTRUCTURE WORKS WEST**
 MOOREBANK AVENUE, MOOREBANK

DESIGNED: [] DATE: [] CHECKED: [] SIZE: [] SCALE: [] CAD REF: []
 D.S. D.S. AUG 19 M.W. A0 AS SHOWN LPWVW-COS-CV-DWG-0425

Costin Roe Consulting Pty Ltd.
 Consulting Engineers
 Level 1, 8 Windmill Street
 Walsh Bay, Sydney NSW 2000
 Tel: (61) 9251-7899 Fax: (61) 9241-3721
 email: mail@costinroe.com.au

Costin Roe Consulting

PRECISION | COMMUNICATION | ACCOUNTABILITY

DRAWING TITLE: **DRAINS CATCHMENT PLAN SHEET 4**

DRAWING NO: **LPWVW-COS-CV-DWG-0425** ISSUE: **0**