

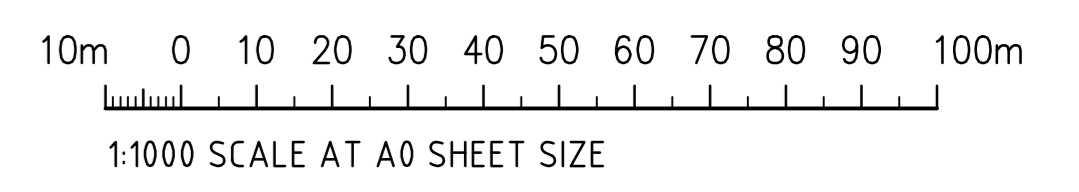
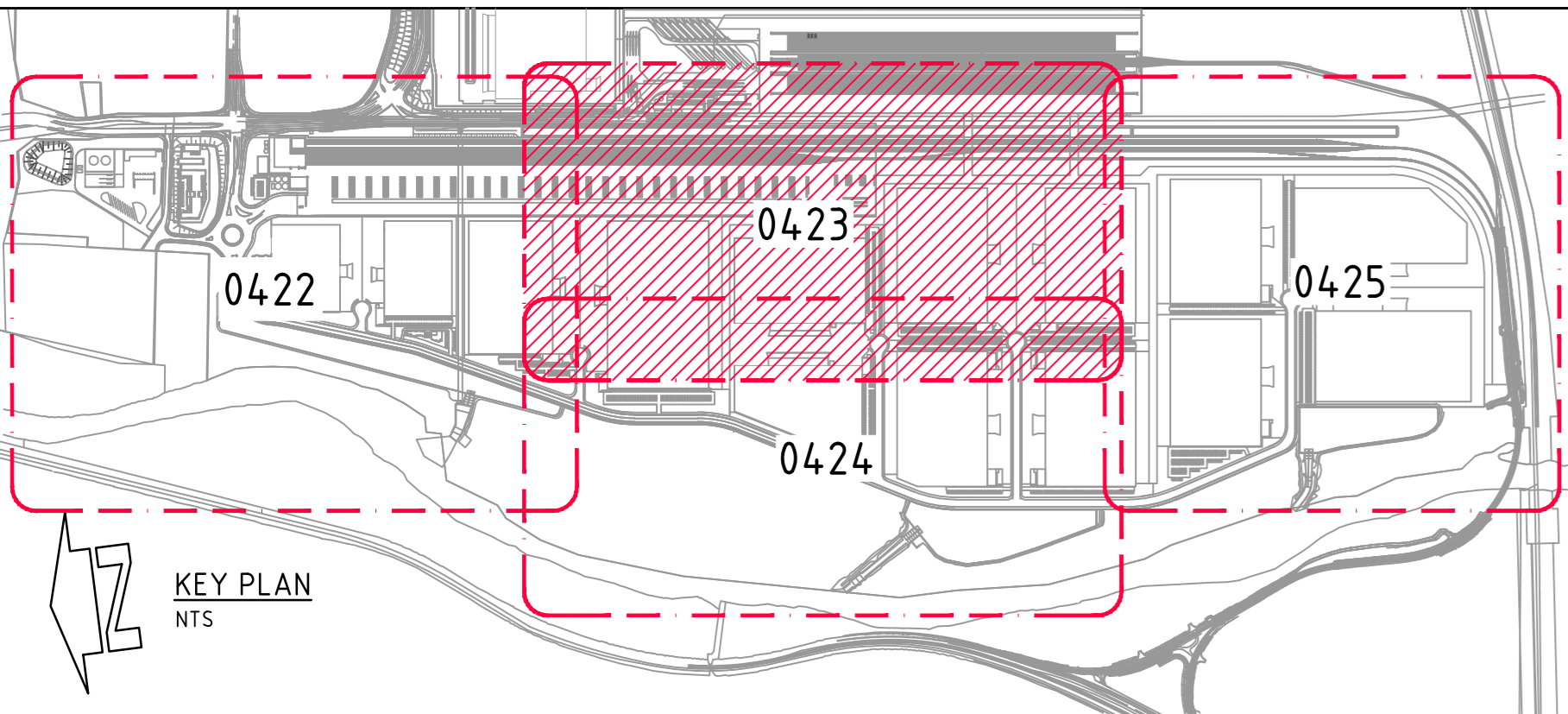
BREAKLINE - REFER TO DRAWING 422 FOR CONTINUATION

BREAKLINE - REFER TO DRAWING 425 FOR CONTINUATION

BREAKLINE - REFER TO DRAWING 424 FOR CONTINUATION

- NOTES:**
- EXTERNAL CONSULTANT NOTE:
 - EXTERNAL DESIGNS SHOWN ARE INDICATIVE FOR PRICING PURPOSES ONLY.
 - FOR FURTHER DESIGN INFORMATION, REFER TO THE BELOW RESPECTIVE CONSULTANT'S DESIGN PACKAGES.
 - ARCADIS - MPW (MOOREBANK PRECINCT WEST LOOP ROAD - LPMW-ARC-CV-DWG)
 - AURECON - INTS (INTERSTATE RAIL FACILITY - INTS-AUR-PV-SKC)
 - AURECON - RALP (INTERMODAL TERMINAL DEVELOPMENT - N01031-PWD-DRG-GEN)
 - NORTHROP - MAUW (MOOREBANK AVENUE UPGRADE WORKS - MAUW-NRP-CV-DWG)
 - NORTHROP - MADR (MOOREBANK AVENUE DIVERSION ROAD - MADR-NRP-CV-DWG)
 - NORTHROP - MAAI (MOOREBANK AVENUE ANZAC ROAD INTERSECTION - MAAI-NRP-CV-DWG)

DRAINS CATCHMENT PLAN - SHEET 2
1:1000 SCALE



FOR CONSTRUCTION

AMENDMENTS	DATE	ISSUE	AMENDMENTS	DATE	ISSUE
ISSUED FOR CONSTRUCTION	30.04.20	0			
50% DESIGN COMPLETION	17.02.20	B			
ISSUED FOR POST APPROVALS	29.11.19	A			

DEVELOPER

ARCHITECT

REID CAMPBELL
Architecture, Interiors, Project Management

PROJECT MANAGER

J. WYNDHAM PRINCE
CONSULTING CIVIL INFRASTRUCTURE ENGINEERS & PROJECT MANAGERS

PROJECT

PRECINCT INFRASTRUCTURE WORKS WEST
MOOREBANK AVENUE, MOOREBANK

Costin Roe Consulting Pty Ltd.
Consulting Engineers

Costin Roe Consulting

PRECISION | COMMUNICATION | ACCOUNTABILITY

DRAWING TITLE

DRAINS CATCHMENT PLAN SHEET 2

DRAWING No. **LPWPIW-COS-CV-DWG-0423** ISSUE **0**