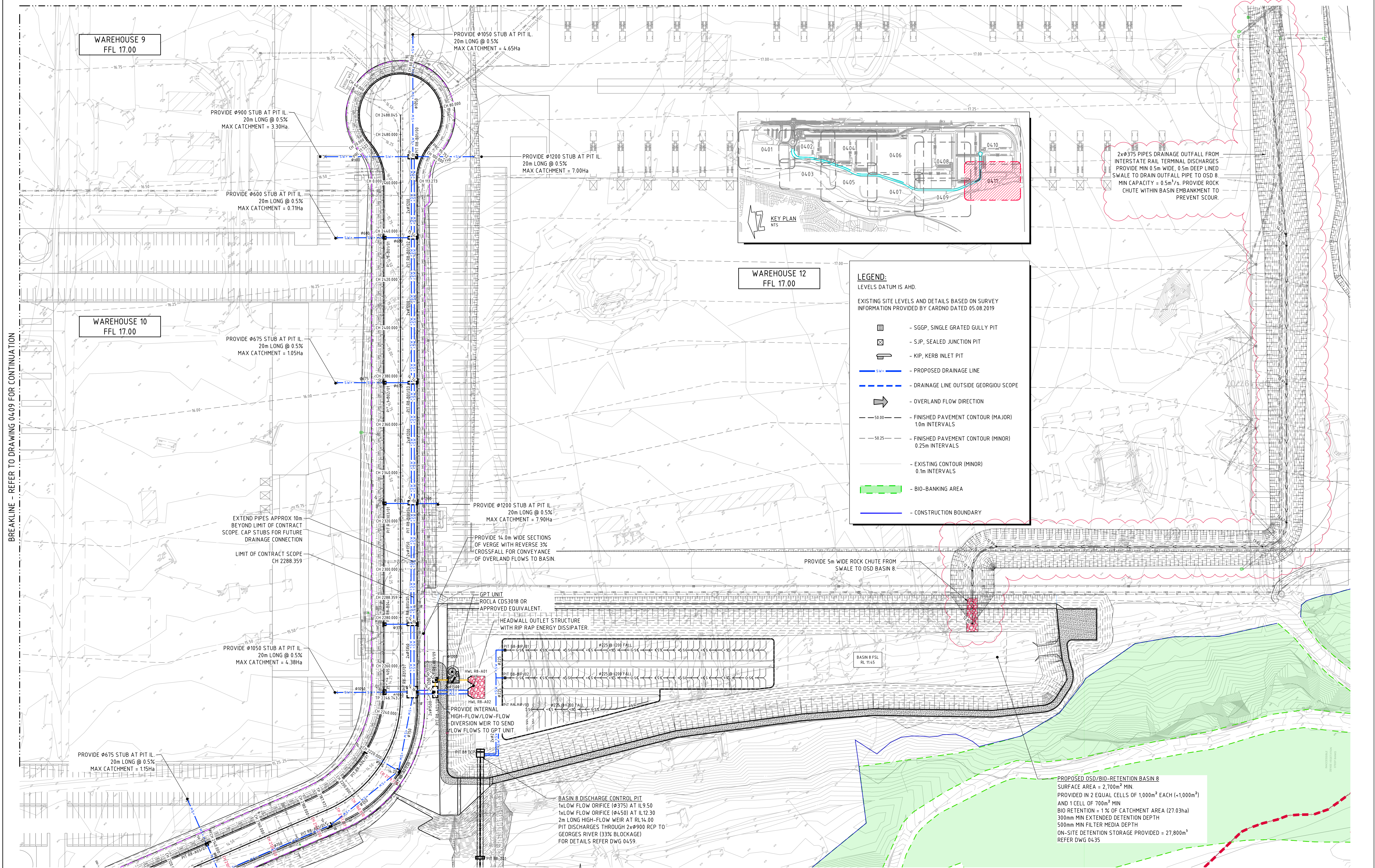
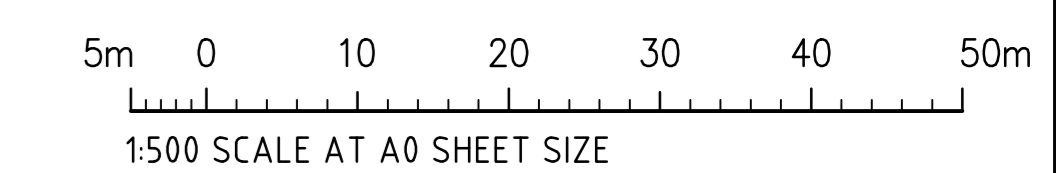


BREAKLINE - REFER TO DRAWING 0409 FOR CONTINUATION



STORMWATER DRAINAGE PLAN - SHEET 11
1:500 SCALE

FOR CONSTRUCTION



REVISIONS	DATE	ISSUE	AMENDMENTS	DATE	ISSUE
REVISED AS CLOUDED	24.11.20	5	REVISED FOR INTS CROSSING SWALE PICKUP	06.06.22	11
REVISED AS CLOUDED	16.11.20	4	ISSUED FOR CONSTRUCTION	05.05.22	10
CONSTRAINTS MAPPING ADDED	04.11.20	3	REVISED CROSSOVER LOCATION	14.05.21	9
REVISED FOR RE-ALIGNED RING ROAD	10.07.20	2	REVISED ROAD DRAINAGES	19.02.21	8
REVISED FOR CHAMBER SIZES	15.05.20	1	REVISED ROAD CHAINAGES	22.01.21	7
ISSUED FOR CONSTRUCTION	30.04.20	0	REVISED SPOT LEVELS	22.12.20	6
AMENDMENTS			AMENDMENTS		

DEVELOPER

MOOREBANK

QUBE

ARCHITECT

watson young

PROJECT MANAGER

J. WYNDHAM PRINCE
CONSULTING CIVIL INFRASTRUCTURE ENGINEERS & PROJECT MANAGERS

PROJECT

PRECINCT INFRASTRUCTURE WORKS WEST
MOOREBANK AVENUE, MOOREBANK

DESIGNED: D.S. DATE: AUG 19 CHECKED: M.W. SCALE: AS SHOWN CAD REF: LPWPIV-COS-CV-2W6-011

Costin Roe Consulting Pty Ltd.
Consulting Engineers
Level 1, 8 Windmill Street
Wahlab Bay, Sydney NSW 2000
Tel: (02) 9551-7899 Fax: (02) 9541-3721
email: mail@costinroe.com.au

Costin Roe Consulting

PRECISION | COMMUNICATION | ACCOUNTABILITY

DRAWING TITLE
STORMWATER DRAINAGE PLAN SHEET 11

DRAWING No. **LPWPIV-COS-CV-DWG-0411** ISSUE **11**