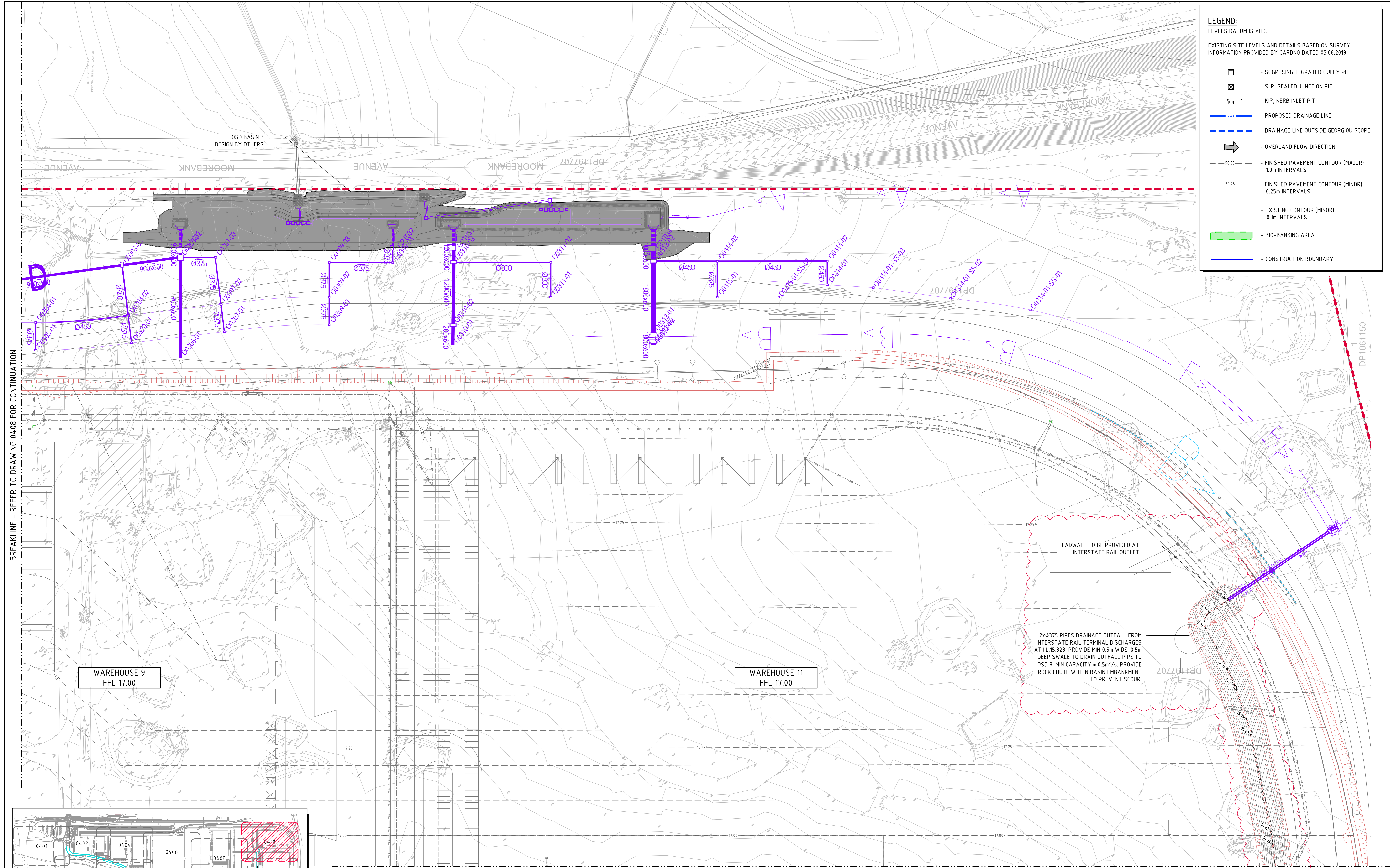


LEGEND:
LEVELS DATUM IS AHD.

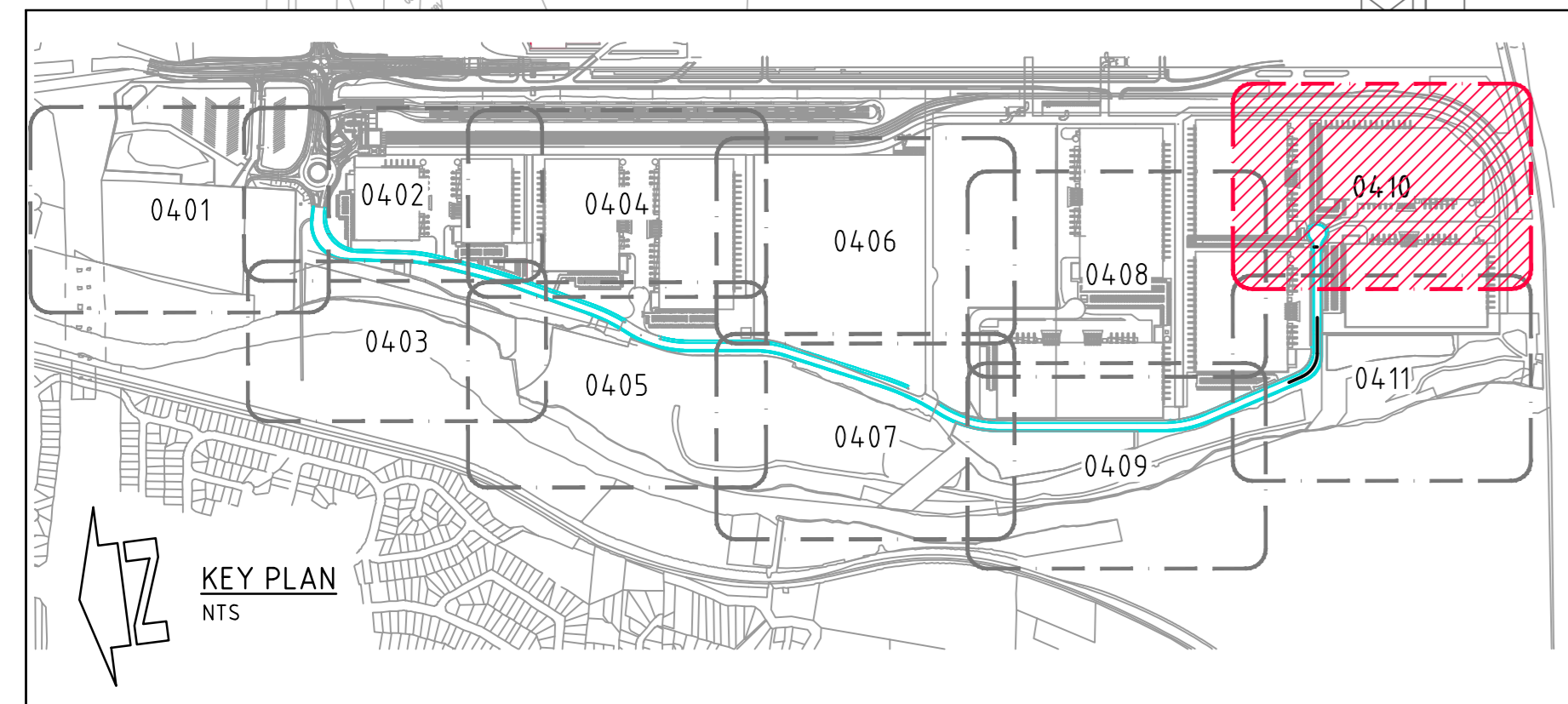
EXISTING SITE LEVELS AND DETAILS BASED ON SURVEY INFORMATION PROVIDED BY CARNO DATED 05.08.2019

- SGGP, SINGLE GRATED GULLY PIT
- SJP, SEALED JUNCTION PIT
- KIP, KERB INLET PIT
- PROPOSED DRAINAGE LINE
- DRAINAGE LINE OUTSIDE GEORGIU SCOPE
- OVERLAND FLOW DIRECTION
- FINISHED PAVEMENT CONTOUR (MAJOR) 1.0m INTERVALS
- FINISHED PAVEMENT CONTOUR (MINOR) 0.25m INTERVALS
- EXISTING CONTOUR (MINOR) 0.1m INTERVALS
- BIO-BANKING AREA
- CONSTRUCTION BOUNDARY



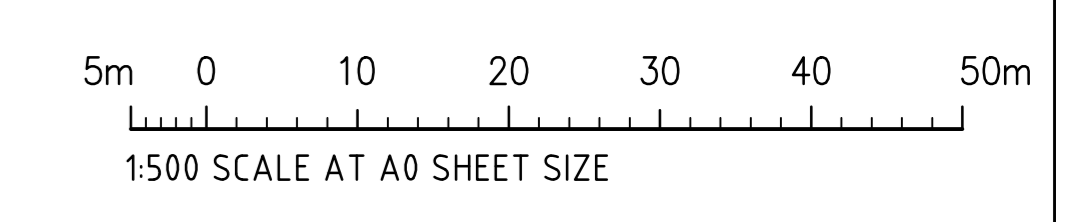
BREAKLINE - REFER TO DRAWING 04.08 FOR CONTINUATION

BREAKLINE - REFER TO DRAWING 04.11 FOR CONTINUATION



STORMWATER DRAINAGE PLAN - SHEET 10
1500 SCALE

FOR CONSTRUCTION



AMENDMENTS	DATE	ISSUE	AMENDMENTS	DATE	ISSUE
REVISD FOR RE-ALIGNED RING ROAD	10.07.20	2	REVISD FOR NTS CROSSING SWALE PICKUP	06.06.22	8
REVISD FOR CHAMBER SIZES	15.05.20	1	ISSUED FOR CONSTRUCTION	05.05.22	7
ISSUED FOR CONSTRUCTION	30.04.20	0	REVISD CROSSOVER LOCATION	14.05.21	6
ISSUED FOR INFORMATION	16.04.20	5	REVISD SPOT LEVELS	22.12.20	5
S&S DESIGN COMPLETION	17.02.20	0	REVISD AS CLEARED	24.11.20	4
ISSUED FOR POST APPROVALS	29.11.19	C	CONSTRAINTS MAPPING ADDED	04.11.20	3

DEVELOPER

ARCHITECT

PROJECT MANAGER

PROJECT

PRECINCT INFRASTRUCTURE WORKS WEST
MOOREBANK AVENUE, MOOREBANK

Costin Roe Consulting Pty Ltd.
Consulting Engineers

Level 1, 9 Windmill Street
Wahlab Bay, Sydney NSW 2000
Tel: (02) 9251-7899 Fax: (02) 9241-3721
email: mail@costinroe.com.au ©

Costin Roe Consulting

PRECISION | COMMUNICATION | ACCOUNTABILITY

DRAWING TITLE
STORMWATER DRAINAGE PLAN SHEET 10

DRAWING No. **LPWPIW-COS-CV-DWG-04.10** ISSUE **8**