

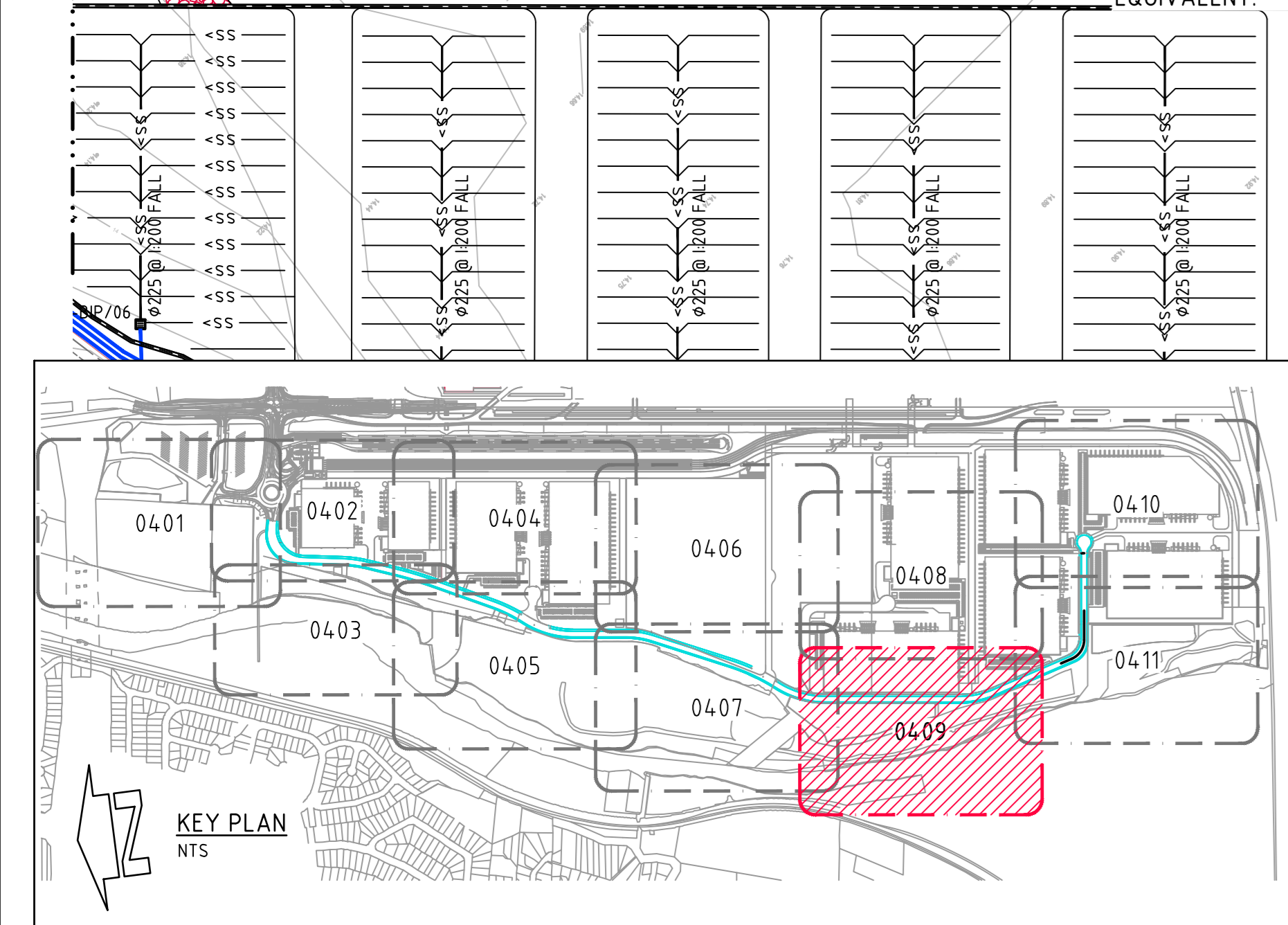
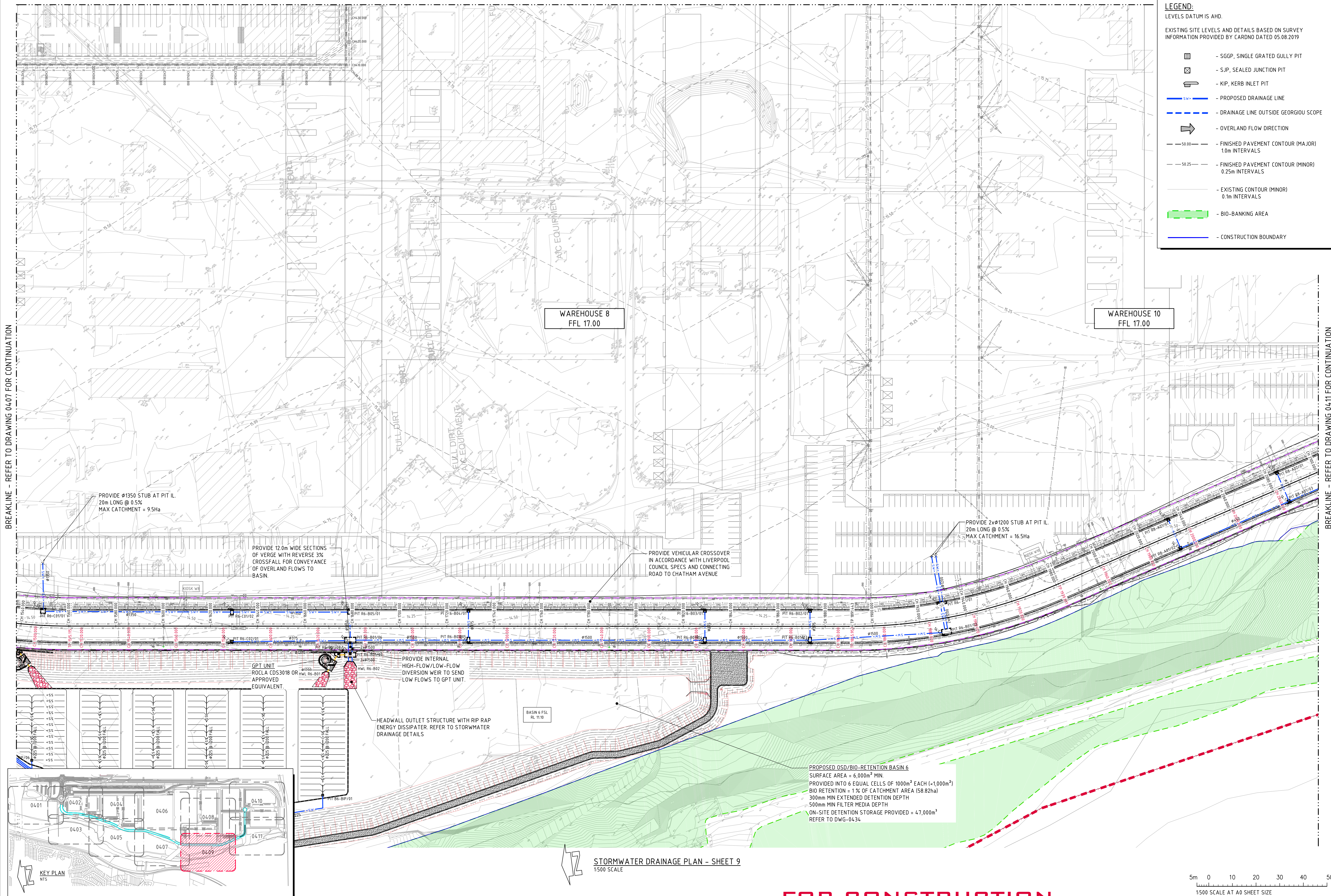
LEGEND:
LEVELS DATUM IS AHD.

EXISTING SITE LEVELS AND DETAILS BASED ON SURVEY INFORMATION PROVIDED BY CARNO DATED 05.08.2019

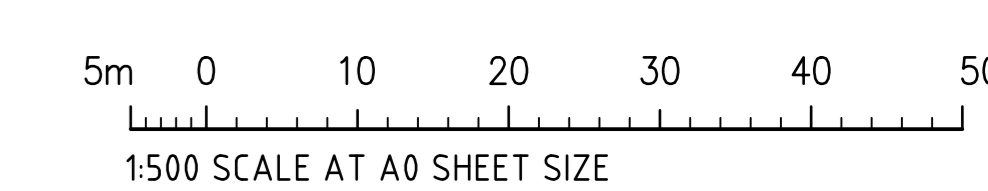
- SGGP, SINGLE GRATED GULLY PIT
- SJP, SEALED JUNCTION PIT
- KIP, KERB INLET PIT
- PROPOSED DRAINAGE LINE
- DRAINAGE LINE OUTSIDE GEORGIU SCOPE
- OVERLAND FLOW DIRECTION
- FINISHED PAVEMENT CONTOUR (MAJOR) 1.0m INTERVALS
- FINISHED PAVEMENT CONTOUR (MINOR) 0.25m INTERVALS
- EXISTING CONTOUR (MINOR) 0.1m INTERVALS
- BIO-BANKING AREA
- CONSTRUCTION BOUNDARY

BREAKLINE - REFER TO DRAWING 0407 FOR CONTINUATION

BREAKLINE - REFER TO DRAWING 0411 FOR CONTINUATION



STORMWATER DRAINAGE PLAN - SHEET 9
1:500 SCALE



FOR CONSTRUCTION

REVISIONS	DATE	ISSUE	AMENDMENTS	DATE	ISSUE	AMENDMENTS
ISSUED FOR INFORMATION	16.04.20	E	REVISIONS AS CLOUED	24.11.20	5	
ISSUED FOR CONSTRUCTION	30.06.20	0	REVISIONS AS CLOUED	22.12.20	6	
REVISED FOR CHAMBER SIZES	15.05.20	1	REVISIONS AS CLOUED	18.02.21	8	
CONSTRAINTS MAPPING ADDED	04.11.20	3	REVISIONS AS CLOUED	14.05.21	9	
REVISD FOR RE-ALIGNED RING ROAD	10.07.20	2	REVISIONS AS CLOUED	14.05.21	10	

DEVELOPER

ARCHITECT

PROJECT MANAGER

PROJECT

PRECINCT INFRASTRUCTURE WORKS WEST
MOOREBANK AVENUE, MOOREBANK

CONSULTANT

PRECISION | COMMUNICATION | ACCOUNTABILITY

DRAWING TITLE

STORMWATER DRAINAGE PLAN SHEET 9

DRAWING No. LPWPIW-COS-CV-DWG-0409