

LEGEND:
LEVELS DATUM IS AHD.

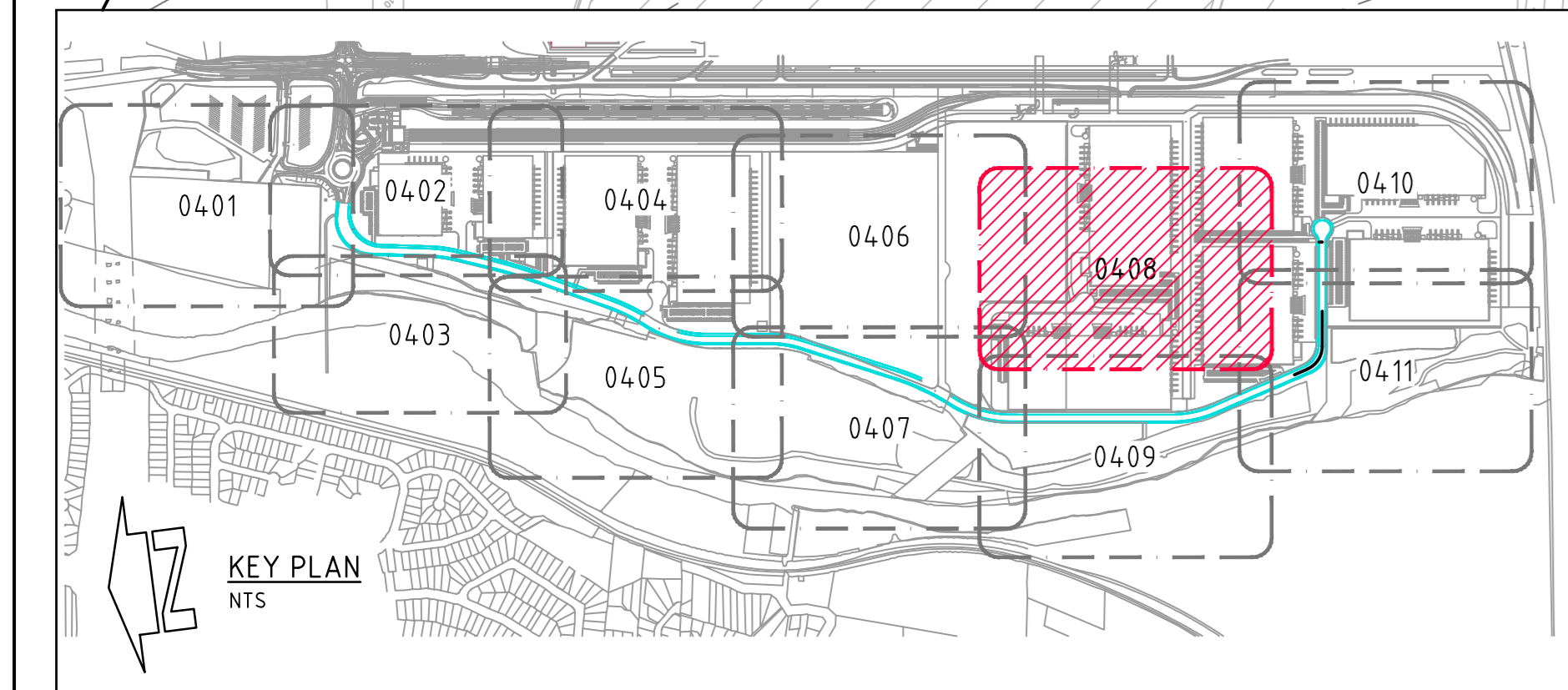
EXISTING SITE LEVELS AND DETAILS BASED ON SURVEY INFORMATION PROVIDED BY CARDNO DATED 05.08.2019

- SGGP, SINGLE GRATED GULLY PIT
- SJP, SEALED JUNCTION PIT
- KIP, KERB INLET PIT
- PROPOSED DRAINAGE LINE
- DRAINAGE LINE OUTSIDE GEORGIU SCOPE
- OVERLAND FLOW DIRECTION
- FINISHED PAVEMENT CONTOUR (MAJOR) 1.0m INTERVALS
- FINISHED PAVEMENT CONTOUR (MINOR) 0.25m INTERVALS
- EXISTING CONTOUR (MINOR) 0.1m INTERVALS
- BIO-BANKING AREA
- CONSTRUCTION BOUNDARY

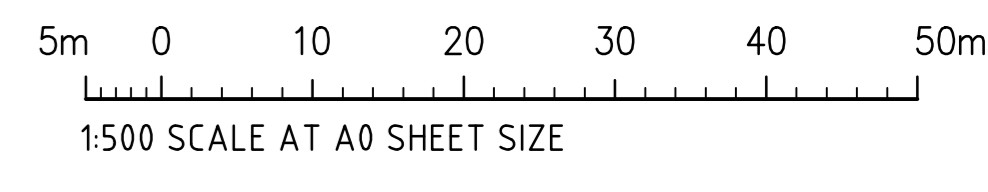
BREAKLINE - REFER TO DRAWING 04.06 FOR CONTINUATION

BREAKLINE - REFER TO DRAWING 04.10 FOR CONTINUATION

BREAKLINE - REFER TO DRAWING 04.09 FOR CONTINUATION

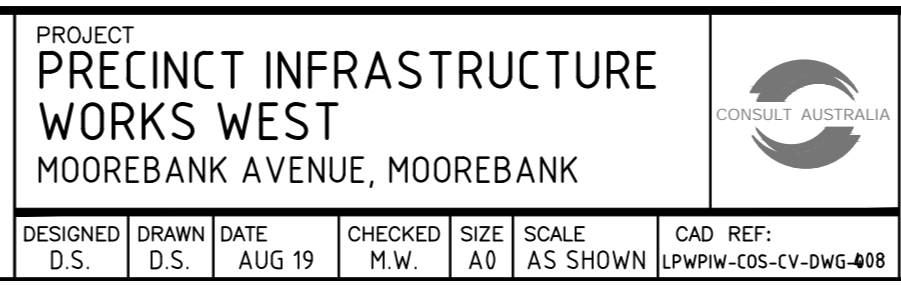


STORMWATER DRAINAGE PLAN - SHEET 8
1:500 SCALE



FOR CONSTRUCTION

REVISED FOR CHAMBER SIZES	15.05.20	1	ISSUED FOR CONSTRUCTION	05.05.22	7	DEVELOPER	
ISSUED FOR CONSTRUCTION	30.04.20	0	REVISED CROSSOVER LOCATION	14.05.21	6		
ISSUED FOR INFORMATION	16.04.20	E	REVISED SPOT LEVELS	22.12.20	5		
50% DESIGN COMPLETION	17.12.20	D	REVISED AS CLOUDED	24.11.20	4		
ISSUED FOR POST APPROVALS	29.11.19	C	CONSTRAINTS MAPPING ADDED	04.11.20	3		
PRELIMINARY ISSUE ONLY	18.10.19	B	REVISED FOR RE-ALIGNED RING ROAD	10.07.20	2		
AMENDMENTS	DATE	ISSUE	AMENDMENTS	DATE	ISSUE		



DRAWING TITLE	STORMWATER DRAINAGE PLAN
SHEET	8
ISSUE	7
DRAWING NO.	LPWPIW-COS-CV-DWG-04.08

PRECISION | COMMUNICATION | ACCOUNTABILITY