

BREAKLINE - REFER TO DRAWING 0311 FOR CONTINUATION

BREAKLINE - REFER TO DRAWING 0314 FOR CONTINUATION

BREAKLINE - REFER TO DRAWING 0313 FOR CONTINUATION

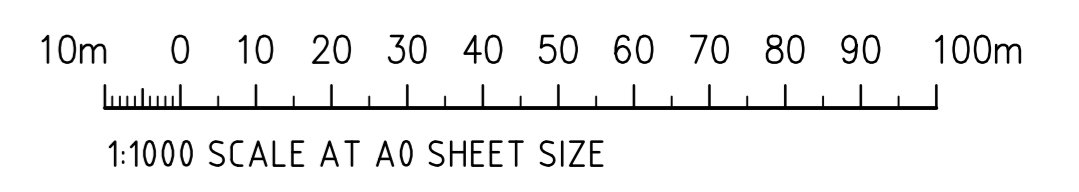
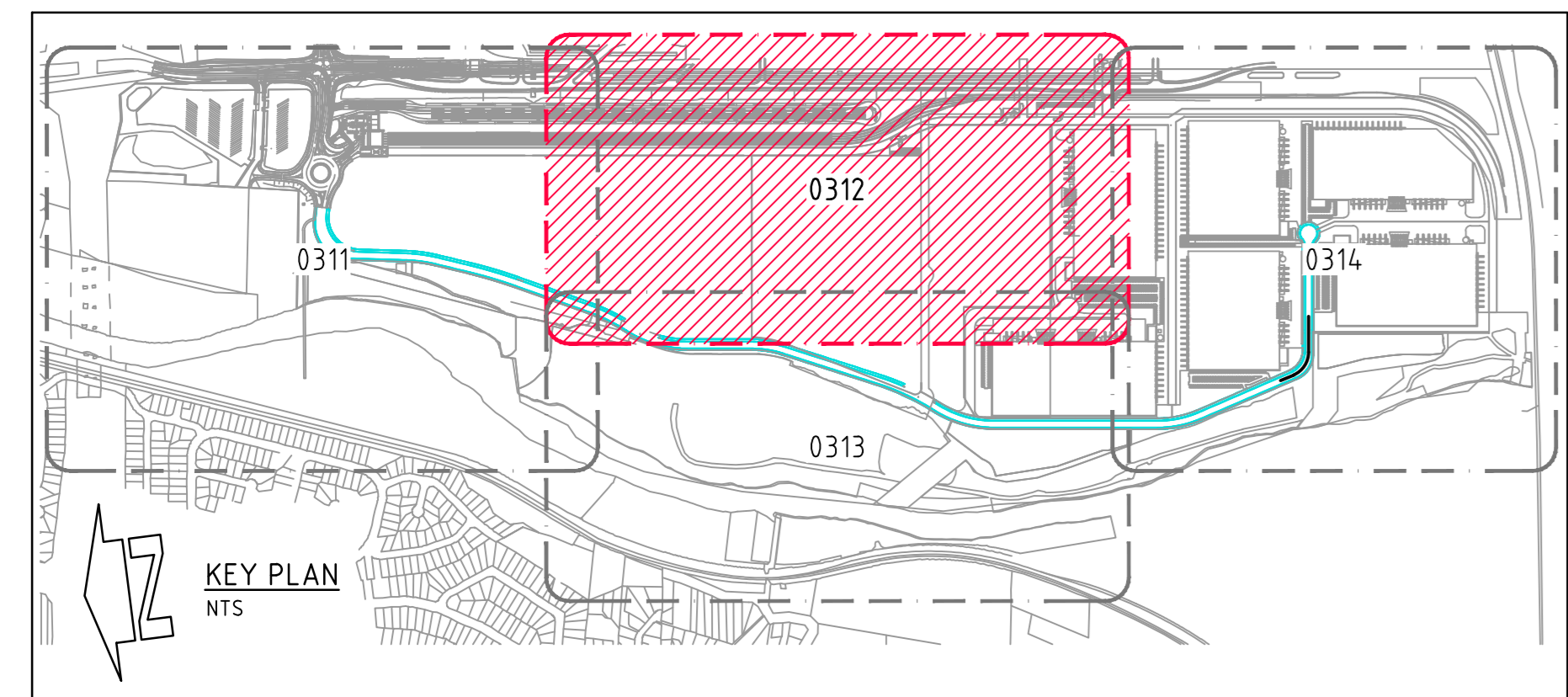
- LEGEND:**
- ROUNDABOUT & LOOP ROAD BY NORTHROP
 - MAAI BY NORTHROP
 - MADR BY NORTHROP
 - MAUW BY NORTHROP
 - MOOREBANK INTERMODAL DEVELOPMENT BY AURECON
 - INTERSTATE TERMINAL AND RAIL ACCESS BY AURECON
 - OSD 10 BY NORTHROP
 - OSD 9 BY ARCADIS

BULK EARTHWORKS PLAN - SHEET 2
1:1000 SCALE

NOTES:

EXTERNAL CONSULTANT NOTE:
EXTERNAL DESIGNS SHOWN ARE INDICATIVE FOR PRICING PURPOSES ONLY.
FOR FURTHER DESIGN INFORMATION, REFER TO THE BELOW RESPECTIVE CONSULTANT'S DESIGN PACKAGES.

- ARCADIS - MPW (MOOREBANK PRECINCT WEST LOOP ROAD - LPMW-ARC-CV-DWG)
- AURECON - INTS (INTERSTATE RAIL FACILITY - INTS-AUR-PV-SKC)
- AURECON - RALP (INTERMODAL TERMINAL DEVELOPMENT - N01031-PWD-DRG-GENI)
- NORTHROP - MAUW (MOOREBANK AVENUE UPGRADE WORKS - MAUW-NRP-CV-DWG)
- NORTHROP - MADR (MOOREBANK AVENUE DIVERSION ROAD - MADR-NRP-CV-DWG)
- NORTHROP - MAAI (MOOREBANK AVENUE ANZAC ROAD INTERSECTION - MAAI-NRP-CV-DWG)



FOR CONSTRUCTION

REVISIONS	DATE	ISSUE	AMENDMENTS	DATE	ISSUE
REVISED FOR INTERSTATE INTERFACE	12.06.20	2		21.09.23	8
ISSUED FOR CONSTRUCTION	08.05.20	1	REVISED FOR MPW SOUTH GRADING	08.08.23	7
ISSUED FOR CONSTRUCTION	20.03.20	0	REVISED AS CLOUDED	16.02.22	6
50% DESIGN COMPLETION	17.02.20	0	REVISED FOR INTS COORDINATION	04.02.22	5
ISSUED FOR INFORMATION	20.12.19	C	REVISED FOR SERVICE PADS A, B & C	13.07.21	4
ISSUED FOR POST APPROVALS	29.11.19	B	REVISED FOR SERVICE PADS A, B & C	14.08.20	3
AMENDMENTS					

DEVELOPER: **MOOREBANK**

ARCHITECT: **watson young**

PROJECT MANAGER: **J. WYNDHAM PRINCE**
CONSULTING CIVIL INFRASTRUCTURE ENGINEERS & PROJECT MANAGERS

PROJECT: **PRECINCT INFRASTRUCTURE WORKS WEST**
MOOREBANK AVENUE, MOOREBANK

DESIGNED: [] DRAWN: [] DATE: AUG 19 CHECKED: [] SIZE: A0 SCALE: AS SHOWN CAD REF: LPWPIW-COS-CV-DWG-0312

Costin Roe Consulting Pty Ltd.
Consulting Engineers
Level 1, 9 Windmill Street
Wahlab Bay, Sydney NSW 2000
Tel: (02) 9551-7899 Fax: (02) 9541-3721
email: mail@costinroe.com.au

Costin Roe Consulting

PRECISION | COMMUNICATION | ACCOUNTABILITY

DRAWING TITLE: **BULK EARTHWORKS PLAN SHEET 2**

DRAWING NO: **LPWPIW-COS-CV-DWG-0312**

ISSUE: **8**