

PROVIDE 300mm HIGH STABILISED COMPACTED EARTH BUND AT DOWNSTREAM END OF WORKS TO PREVENT DIRTY WATER FROM ENTERING RIVER

PROVIDE TURBIDITY CURTAIN TO FOREBAY AREA DURING CONSTRUCTION OF DISCHARGE STRUCTURES. SEDIMENT LADEN WATER IN FOREBAY TO BE TREATED/REMOVED PRIOR TO REMOVAL OF CURTAIN & AFTER STABILISATION OF DISCHARGE STRUCTURE

CHECK DAM STRUCTURES AT 20m INTERVALS. TYPICAL

PROVIDE TEMPORARY 300mm HIGH COMPACTED EARTH BUND TO DIVERT CLEAN WATER AWAY FROM WORKS AREA.

TREATED WATER FROM BASIN 6 TO BE PUMPED THROUGH THE BASIN 6 DISCHARGE CONTROL PIT TO THE CLEAN WATER DIVERSION CHANNEL AS NOTED

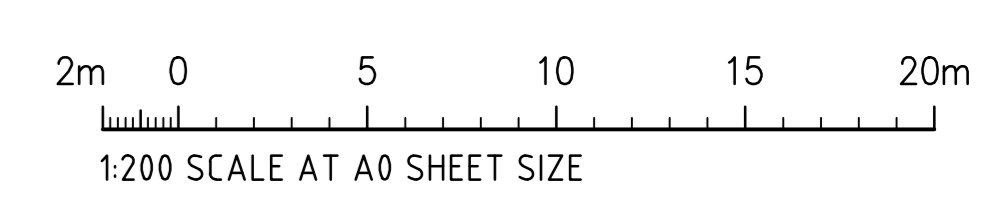
BASIN INLET PITS TO BE BLOCKED UNTIL COMPLETION OF CONTRIBUTING CATCHMENT WORKS & FINAL FILTRATION MEDIA HAS BEEN INSTALLED.

**BASIN 6 OUTLET
EROSION & SEDIMENT CONTROL PLAN**
1:200 SCALE

LEGEND:
LEVELS DATUM IS AHD.

EXISTING SITE LEVELS AND DETAILS BASED ON SURVEY INFORMATION PROVIDED BY CARDNO TITLED 115804548 DATED 05/08/19.

- SHEET-FLOW DIRECTION
- SITE BOUNDARY
- DIRTY WATER DIVERSION DRAIN
- CLEAN WATER DIVERSION DRAIN
- TURBIDITY CURTAIN
- SEDIMENT FENCING
- STABILISED SOIL
- STABILISED EARTH DIVERSION BUND
- ACCESS ROAD



FOR CONSTRUCTION

AMENDMENTS	DATE	ISSUE	AMENDMENTS	DATE	ISSUE
REVISED AS CLOURED	24.11.20	1			
ISSUED FOR CONSTRUCTION	20.08.20	0			

DEVELOPER

ARCHITECT

PROJECT MANAGER

PROJECT

PRECINCT INFRASTRUCTURE WORKS WEST
MOOREBANK AVENUE, MOOREBANK

Costin Roe Consulting Pty Ltd.
Consulting Engineers

Level 1, 9 Windmill Street
Wahlab Bay, Sydney NSW 2000
Tel: (02) 9251-7899 Fax: (02) 9241-3721
email: mail@costinroe.com.au ©

Costin Roe Consulting

PRECISION | COMMUNICATION | ACCOUNTABILITY

DRAWING TITLE

**BASIN 6 OUTLET STRUCTURE
EROSION & SEDIMENT
CONTROL PLAN**

DRAWING No: LPWPIW-COS-CV-DWG-0247

ISSUE 1