

MOOREBANK PRECINCT EAST

MOOREBANK AVENUE

MOOREBANK AVENUE

GEORGES RIVER

GEORGES RIVER

SEDIMENT BASIN 3 DISCHARGES UNDER MOOREBANK AVENUE VIA EXISTING HEADWALL

RUNOFF FROM MOOREBANK AVENUE TO BE MANAGED BY EXISTING/PROPOSED STORMWATER INFRASTRUCTURE

SEDIMENT BASIN 3:
 CATCHMENT AREA = 10.46 Ha
 DISTURBED AREA = 10.46 Ha
 REQUIRED SETTLING ZONE = 2,156m³
 REQUIRED STORAGE ZONE = 92m³
 PROVIDED BASIN VOLUME = 2,248m³
 REFER TO SD 6-4

OUTLET 3

CAT 4
10.46 Ha

SURFACE WATER MONITORING LOCATION

CAT 8
26.91 Ha

SURFACE WATER MONITORING LOCATION

OUTLET 8

SEDIMENT BASIN 8:
 CATCHMENT AREA = 26.91 Ha
 DISTURBED AREA = 26.91 Ha
 REQUIRED SETTLING ZONE = 5,546m³
 REQUIRED STORAGE ZONE = 236m³
 PROVIDED BASIN VOLUME = 5,782m³
 REFER TO SD 6-4

PROVIDE STABILISED SITE ACCESS REFER TO SD 6-14

STABILISED COMPACTED EARTH. REFER TO DRAWING LPWPIW-COS-CV-DWG-0200 FOR STABILISATION METHODS

WATER FROM STABILISED EXTERNAL AREAS IS NOT TO FLOW INTO ADJACENT SUB-CATCHMENTS

PROVIDE SEDIMENTATION CONTROLS TO THE BASIN 8 DISCHARGE WORKS. REFER TO DRAWING LPWPIW-COS-CV-DWG-0248

N 6242222.718
E 307223.564

EROSION & SEDIMENT CONTROL PLAN - PHASE 4
1:3000 SCALE

LEGEND:
LEVELS DATUM IS AHD.

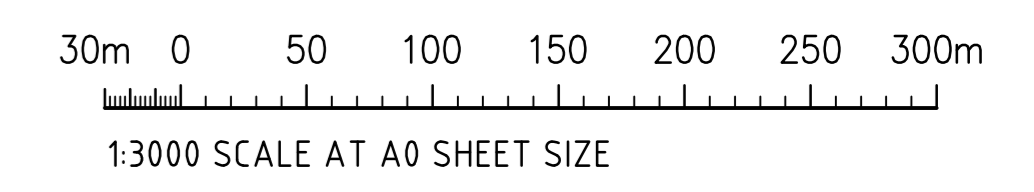
EXISTING SITE LEVELS AND DETAILS BASED ON SURVEY INFORMATION PROVIDED BY CARDNO TITLED 115804548 DATED 05/08/19.

	- SHEET-FLOW DIRECTION		- 1 IN 100 YEAR ARI FLOOD EXTENT
	- SITE BOUNDARY		- SEDIMENT BASIN (REFER TO PLAN)
	- CATCHMENT BOUNDARY		- STABILISED SOIL
	- DIRTY WATER DIVERSION DRAIN - MINOR		- EARTH DIVERSION BUND
	- DIRTY WATER DIVERSION DRAIN - MAJOR		- HAUL ROAD
	- CLEAN WATER DIVERSION DRAIN		- DISTURBED LAND (4-65Ha AT ANY ONE TIME)
	- PUMP DIVERSION		- BIO-BANKING AREA
	- SEDIMENT FENCING		

SITE STABILITY NOTE:
 LAND DISTURBANCE & LAND FILLING ACTIVITIES MUST BE UNDERTAKEN IN A PHASED MANNER, IMPACTING A MAXIMUM AREA OF 65Ha AT ANY ONE TIME PER CONDITION B4-1(a).
 DISTURBED AREAS MUST BE STABILISED TO A C-FACTOR OF 0.05 PRIOR TO THE COMPLETION OF ANY OTHER WORKS PER CONDITION B4-1(b). REFER TO TABLE 1 ON DRAWING 0200 FOR APPROVED STABILISATION METHODS

EROSION & SEDIMENT CONTROL NOTES:
 REFER TO DRAWING 0200 FOR EROSION & SEDIMENT CONTROL NOTES

SEDIMENT BASIN NOTES
 REFER TO DRAWING 0201 FOR SEDIMENT BASIN SIZING CALCULATIONS



FOR CONSTRUCTION