

MOOREBANK PRECINCT EAST

MOOREBANK AVENUE

MOOREBANK AVENUE

RUNOFF FROM MOOREBANK AVENUE TO BE MANAGED BY EXISTING/PROPOSED STORMWATER INFRASTRUCTURE

N 6240412.646

PROVIDE STABILISED SITE ACCESS REFER TO SD 6-14

STABILISED COMPACTED EARTH REFER TO DRAWING LPWPIW-COS-CV-DWG-0200 FOR STABILISATION METHODS

WATER FROM STABILISED EXTERNAL AREAS IS NOT TO FLOW INTO ADJACENT SUB CATCHMENTS

MINOR V-DRAIN REFER DETAILS ON DRG 0251 PROVIDE NOMINAL 0.5% FALL ON PAD TO MAJOR V-DRAIN TYPICAL

CAT 6
59.06 Ha

RESIDUAL UNDISTURBED LAND

LIMIT OF WORKS FOR THIS STAGE OF EROSION & SEDIMENT CONTROL WORKS

SURFACE WATER MONITORING LOCATION

GEORGES RIVER

OUTLET 6

PROVIDE SEDIMENTATION CONTROLS TO THE BASIN 6 DISCHARGE WORKS. REFER TO DRAWING LPWPIW-COS-CV-DWG-0247

GEORGES RIVER

GEORGES RIVER

SEDIMENT BASIN 6:
CATCHMENT AREA = 59.10 Ha
DISTURBED AREA = 59.10 Ha
REQUIRED SETTLING ZONE = 12,179m³
REQUIRED STORAGE ZONE = 218m³
PROVIDED BASIN VOLUME = 20,000m³
REFER TO SD 6-4

N 6242222.718
E 307223.564

EROSION & SEDIMENT CONTROL PLAN - PHASE 3
1:3000 SCALE

LEGEND:
LEVELS DATUM IS AHD.

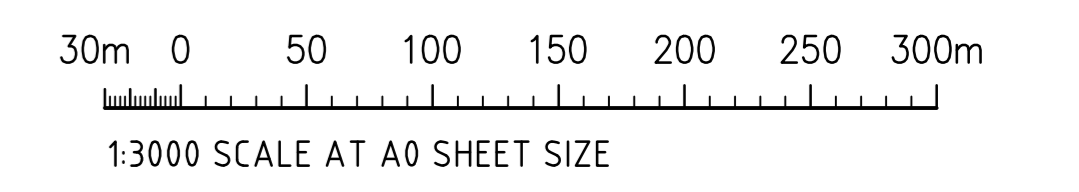
EXISTING SITE LEVELS AND DETAILS BASED ON SURVEY INFORMATION PROVIDED BY CARDNO TITLED 115804548 DATED 05/08/19.

	- SHEET-FLOW DIRECTION		- 1 IN 100 YEAR ARI FLOOD EXTENT
	- SITE BOUNDARY		- SEDIMENT BASIN (REFER TO PLAN)
	- CATCHMENT BOUNDARY		- STABILISED SOIL
	- DIRTY WATER DIVERSION DRAIN - MINOR		- STABILISED EARTH DIVERSION BUND
	- DIRTY WATER DIVERSION DRAIN - MAJOR		- HAUL ROAD
	- CLEAN WATER DIVERSION DRAIN		- DISTURBED LAND (≤65Ha AT ANY ONE TIME)
	- PUMP DIVERSION		- UNDISTURBED LAND
	- SEDIMENT FENCING		- BIO-BANKING AREA

SITE STABILITY NOTE:
LAND DISTURBANCE & LAND FILLING ACTIVITIES MUST BE UNDERTAKEN IN A PHASED MANNER, IMPACTING A MAXIMUM AREA OF 65Ha AT ANY ONE TIME PER CONDITION B4-1(a).
DISTURBED AREAS MUST BE STABILISED TO A C-FACTOR OF 0.05 PRIOR TO THE COMPLETION OF ANY OTHER WORKS PER CONDITION B4-1(b). REFER TO TABLE 1 ON DRAWING 0200 FOR APPROVED STABILISATION METHODS

EROSION & SEDIMENT CONTROL NOTES:
REFER TO DRAWING 0200 FOR EROSION & SEDIMENT CONTROL NOTES

SEDIMENT BASIN NOTES
REFER TO DRAWING 0201 FOR SEDIMENT BASIN SIZING CALCULATIONS



FOR CONSTRUCTION