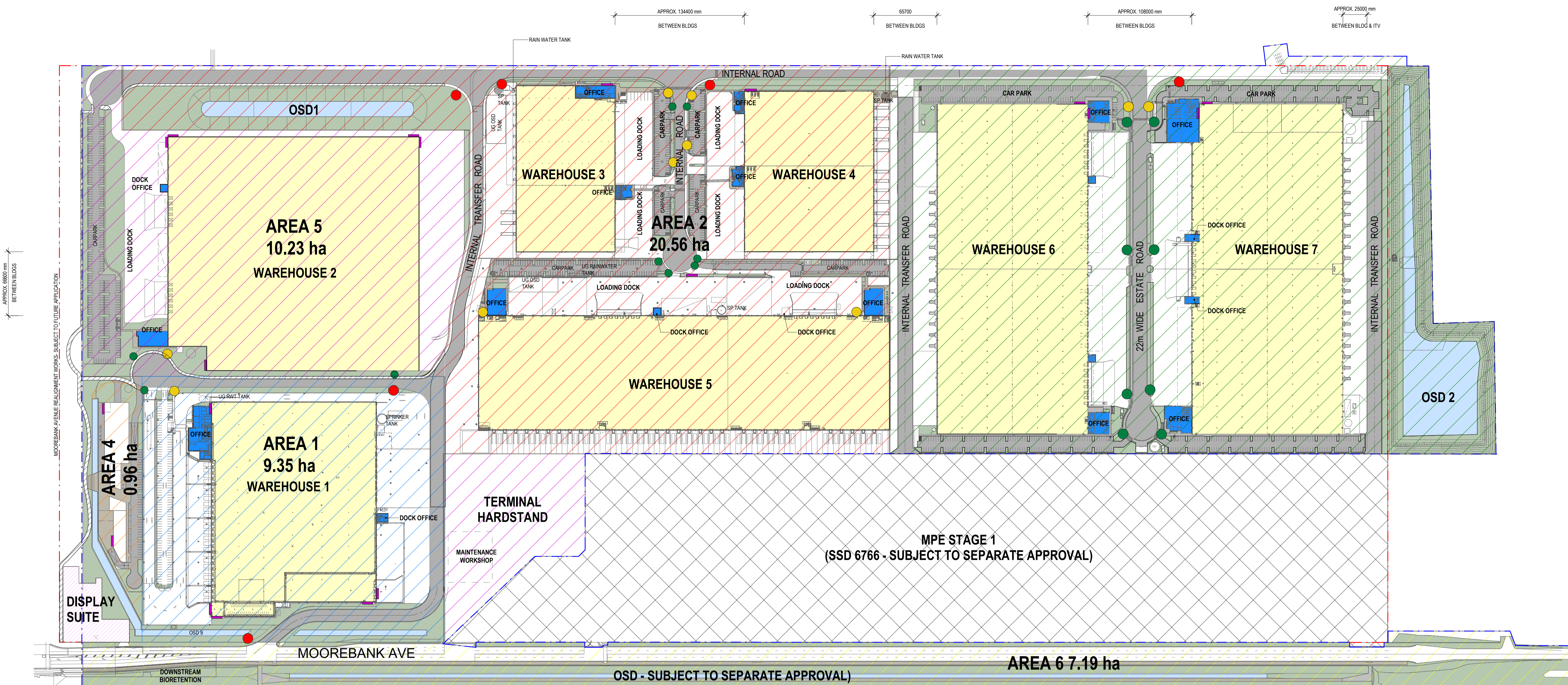


CONSERVATION AREA



LANDSCAPE TABLE:

STAGE	AREA (m ²)	TOTAL LANDSCAPE (m ²)
AREA 1 MPE2-GNK-LN-2001(E)	93,580 m ²	12,464 m ²
AREA 2 MPE2-GNK-LN-2001(E)	205,614 m ²	23,593 m ²
AREA 3 MPE2-GNK-LN-2001(E)	238,120 m ²	32,030 m ²
AREA 4 MPE2-GNK-LN-2001(E)	9,690 m ²	2,926 m ²
AREA 5 MPE2-GNK-LN-2001(E)	102,370 m ²	11,008 m ²
AREA 6 MPE2-GNK-LN-2001(E)	71,930 m ²	40,108 m ²
MPE STAGE 2 OPERATIONAL AREA FOR LANDSCAPE CALCULATIONS	721,304 m²	122,129 m²
SITE COVERAGE (%)		16.9%

NOTES:

- UNLESS REFERENCED TO A SITE PLAN, AREAS ARE INDICATIVE ONLY AND SUBJECT TO CHANGES AND DETAILED DESIGN. REFER TO AREA SPECIFIC SITE PLANS FOR DETAILS WHERE AVAILABLE.
- LANDSCAPE CALCULATIONS ARE SUBJECT TO LANDSCAPE ARCHITECT'S INPUT.
- LANDSCAPE CALCULATIONS SUBJECT TO WORKS AND MEASUREMENTS ON SITE.

LEGEND:

STAGING:	LINEWORK & HATCHES:
AREA 1	MPE SITE BOUNDARY
AREA 2	MPE STAGE 2 OPERATIONAL BOUNDARY
AREA 3	MPE STAGE 1 (SUBJECT TO SEPARATE APPROVAL)
AREA 4	SHARED PATHWAY
AREA 5	DISPLAY SUITE
AREA 6	IMEX MAINTENANCE WORKSHOP

SIGNAGE:

- TYPE 1 STREET SIGNAGE
- TYPE 2 TENANT IDENTIFICATION SIGNAGE
- TYPE 3 DIRECTIONAL SIGNAGE
- TYPE 4 CORPORATE SIGNAGE

NOTES:

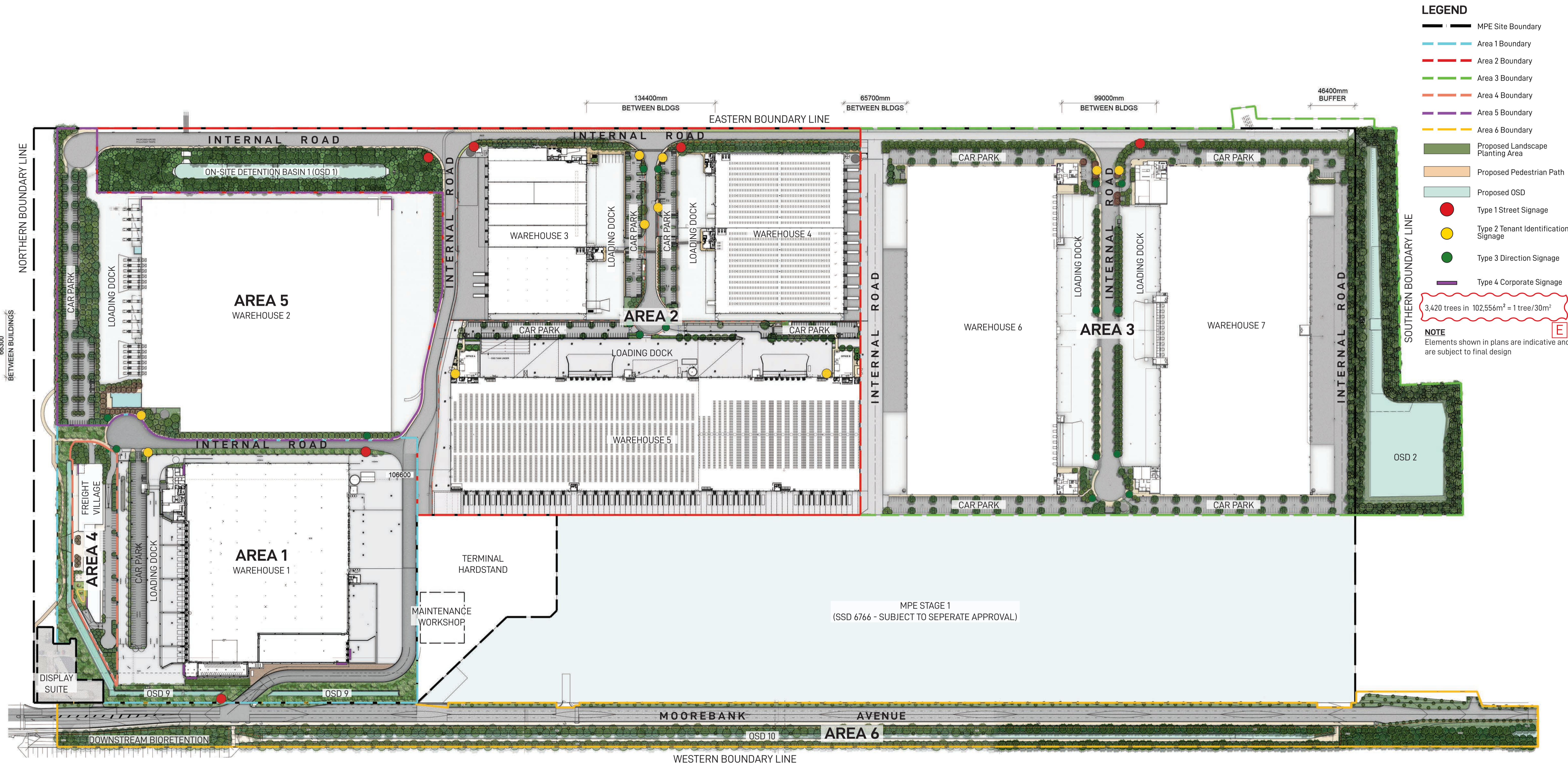
- ALL SERVICES RELOCATION TO BE CONFIRMED BY ENG.
- ALL DESIGNS ARE INDICATIVE AND SUBJECT TO DETAILED DESIGN.
- LANDSCAPE IS SHOWN INDICATIVELY AND IS SUBJECT TO LANDSCAPE ARCHITECTS INPUT.

UDLPL/HMS NOTES:

- PROVISION OF TREES AND LANDSCAPING (10% SOFT AND 15% INCLUDING HARD)
- HIGH ALBEDO ROOF
- SOLAR PANELS AT 30%

All areas indicated are indicative for design and planning purposes only and should not be used for any contractual reasons without verification by a licensed surveyor or further design development being completed.

Watson Young Architects Pt. Melbourne | Perth | Sydney 03 9516 8555 ACN: 111398700
8 Gratton Street Prahran VIC 3181 | e: info@watsonyoung.com.au | w: watsonyoung.com.au
© Watson Young Architects. This drawing is protected by copyright.



LEGEND

- MPE Site Boundary
- Area 1 Boundary
- Area 2 Boundary
- Area 3 Boundary
- Area 4 Boundary
- Area 5 Boundary
- Area 6 Boundary
- Proposed Landscape Planting Area
- Proposed Pedestrian Path
- Proposed OSD
- Type 1 Street Signage
- Type 2 Tenant Identification Signage
- Type 3 Direction Signage
- Type 4 Corporate Signage

3,420 trees in 102,556m² = 1 tree/30m²

NOTE
Elements shown in plans are indicative and are subject to final design

Landscape Architect
GROUND INK
 Suite 201, 75 Archer St, Chatswood NSW 2067 Ph. (02) 9411 3279
 www.groundink.com.au ABN 55 163 025 456 ACN 163 025 456
 © Ground Ink Pty Ltd This design and drawing is protected by copyright.

Client
LOGOS
 29/88 Phillip Street, Sydney, NSW 2000
 Ph. (02) 81973900
 www.logosproperty.com.au

Architect
watson young
 15 Blue Street, North Sydney NSW 2060
 Ph. (02) 83290730
 www.watsonyoung.com.au

Project Manager
ASPECT
 Suite 117 / 25 Solent Circuit
 Baukhurst Hills NSW 2153
 Ph. 0409 515 535
 http://aspectenvironmental.com.au/

Note
 Verify all dimensions on site before commencing work. Report all discrepancies to Landscape Architect prior to construction. Figured dimensions to be taken in preference to scaled drawings.
 All work is to conform to relevant Australian standards and other codes as applicable.
 Location of underground services to be proven on site and protected if necessary prior to construction. Dial before you dig.
 Plant species and quantities shown are indicative only and are subject to change based on future project requirements.

Issue	Date	Description	Drawn	Checked
A	04.04.20	Issue for Coordination	KF	RL
B	28.10.20	Issue for Coordination	KF	RL
C	28.10.20	Issue for Coordination	KF	RL
D	16.12.20	Issue for Coordination	KF	RL
E	21.07.22	Issue for Coordination	WL	RL

Drawing Title
PRECINCT LANDSCAPE MASTERPLAN

FOR COORDINATION

Date	Job Number	Drawn	Checked	Drawing Number
21.07.22	20200421	WL	RL	MPE2-GNK-LN-DWG-2000

Project
Moorebank Precinct East
 Moorebank Logistics Park, Moorebank NSW

Scale 1:2000 @ A1

0 12.5 25 37.5 50m

North
 Rev
 E

PRECINCT DEEP SOIL AREA

- Deep Soil Area
- Landscape Area on Slab

AREA 1 LANDSCAPE AREA

- Area 1 Boundary
- Soft Landscape Area : 11,632m² (12.4%)
- Hard Landscape Area : 832m² (0.8%)
- Total Area : 12,464m² (13.3%)

AREA 2 LANDSCAPE AREA

- Area 2 Boundary
- Soft Landscape Area : 19,132m² (9.3%)
- Hard Landscape Area : 4,461m² (2.1%)
- Total Area : 23,593m² (11.4%)

AREA 3 LANDSCAPE AREA

- Area 3 Boundary
- Soft Landscape Area : 28,738m² (12%)
- Hard Landscape Area : 3,292m² (1.4%)
- Total Area : 32,030m² (13.4%)

AREA 4 LANDSCAPE AREA

- Area 4 Boundary
- Soft Landscape Area : 1,942m² (20.0%)
- Hard Landscape Area : 984m² (10.1%)
- Total Area : 2,926m² (30.1%)

AREA 5 LANDSCAPE AREA

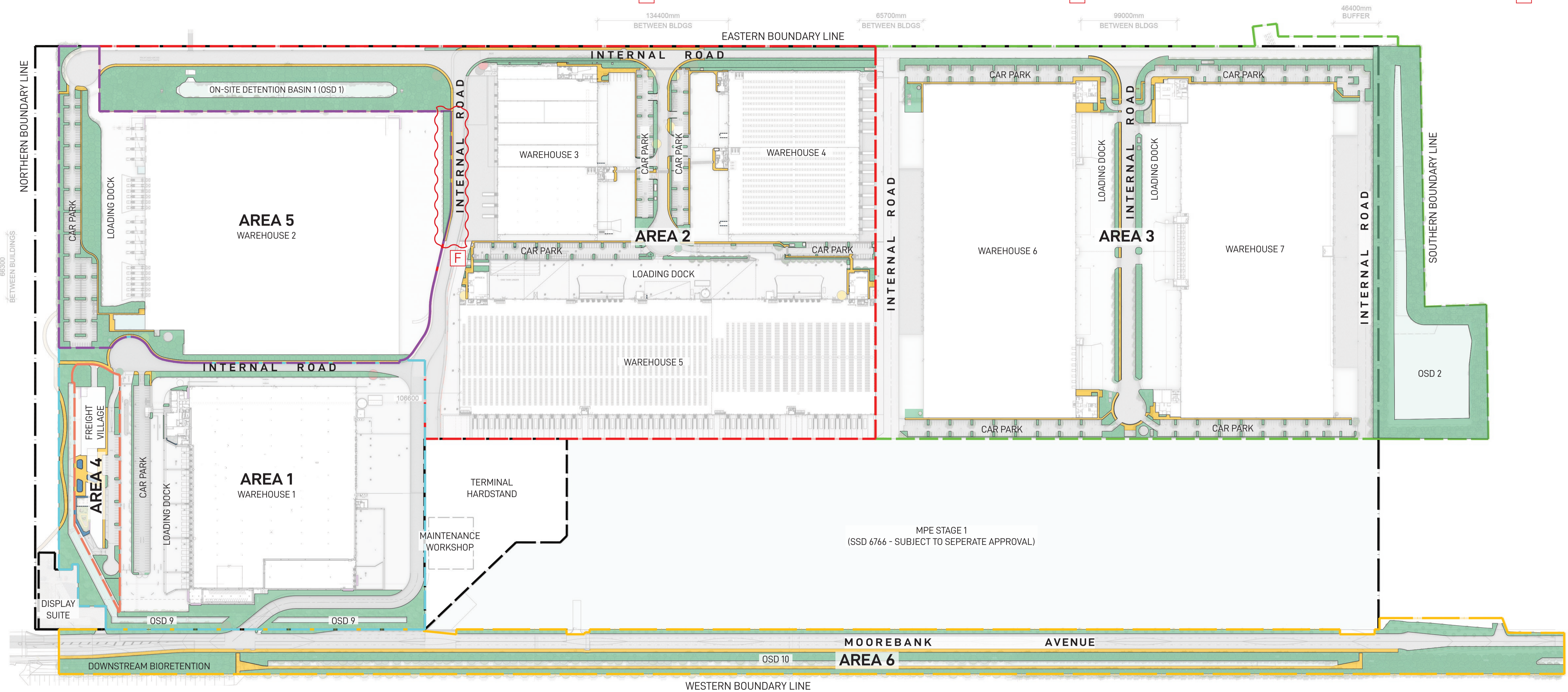
- Area 5 Boundary
- Soft Landscape Area : 9538m² (9.32%)
- Hard Landscape Area : 1,470m² (1.4%)
- Total Area : 11,008 (10.75%)

AREA 6 LANDSCAPE AREA

- Area 6 Boundary
- Soft Landscape Area : 31,638m² (43.9%)
- Hard Landscape Area : 8,470m² (11.7%)
- Total Area : 40,108m² (55.7%)

TOTAL LANDSCAPE AREA

- MPE Precinct Boundary
- Total Soft Landscape Area : 102,556m² (14.2%)
- Total Hard Landscape Area : 19,509m² (2.7%)
- Total Area : 122,129m² (16.9%)



Landscape Architect
GROUND INK
 Suite 201, 75 Archer St, Chatswood NSW 2067 Ph. (02) 9411 3279
 www.groundink.com.au ABN 55 163 025 456 ACN 163 025 456
 © Ground Ink Pty Ltd This design and drawing is protected by copyright.

Client
LOGOS
 29/88 Phillip Street, Sydney, NSW 2000
 Ph. (02) 81973900
 www.logosproperty.com.au

Architect
watson young
 15 Blue Street, North Sydney NSW 2060
 Ph. (02) 83290730
 www.watsonyoung.com.au

Project Manager
ASPECT
 Suite 117 / 25 Solent Circuit
 Baulkham Hills NSW 2153
 Ph. 0409 515 535
 http://aspectenvironmental.com.au/

Note
 Verify all dimensions on site before commencing work. Report all discrepancies to Landscape Architect prior to construction. Figured dimensions to be taken in preference to scaled drawings.
 All work is to conform to relevant Australian standards and other codes as applicable.
 Location of underground services to be proven on site and protected if necessary prior to construction. Dial before you dig.
 Plant species and quantities shown are indicative only and are subject to change based on future project requirements.

Issue	Date	Description	Drawn	Checked
A	04.04.20	Issue for Coordination	KF	RL
B	28.10.20	Issue for Coordination	KF	RL
C	28.10.20	Issue for Coordination	KF	RL
D	16.12.20	Issue for Coordination	KF	RL
E	21.07.22	Issue for Coordination	WL	RL

Drawing Title
PRECINCT LANDSCAPE AREAS PLAN

FOR COORDINATION
 Date: 21.07.22 Job Number: 20200421 Drawn: WL Checked: RL Drawing Number: MPEZ-GNK-LN-DWG-2001
 Project: Moorebank Precinct East Moorebank Logistics Park, Moorebank NSW
 Scale: 1:2000 @ A1
 0 12.5 25 37.5 50m
 Rev: E