

MOOREBANK PRECINCT EAST

Stage 2: Quarterly Compliance Report – #01

July – September 2018

03 DECEMBER 2018

Incorporating



CONTACT

KETAN PATEL
Senior Environmental Consultant


T 02 8907 2687
M 0450 922 016
E ketan.patel@arcadis.com


Arcadis
Level 16/580 George Street
Sydney NSW 2000


Moorebank Precinct East

Stage 2: Quarterly Compliance Report – #01

July - September 2018

Author Mackenzie Barton 

Checker Heather Tilley 

Approver Heather Tilley 

Report No SSS2-ARC-EN-RPT-0054
Date 3/12/2018
Revision Text 003

This report has been prepared for Tactical Group in accordance with the terms and conditions of appointment for Moorebank Precinct West Early Works dated 7 October 2016. Arcadis Australia Pacific Pty Limited (ABN 76 104 485 289) cannot accept any responsibility for any use of or reliance on the contents of this report by any third party.

REVISIONS

| Revision | Date | Description | Prepared by | Approved by |
|----------|------------|---|-------------|-------------|
| 001 | 31/10/2018 | Submission to Tactical Group | M Barton | H Tilley |
| 002 | 23/11/2018 | Final submission to Tactical Group | M Barton | H Tilley |
| 003 | 3/12/2018 | Final including Tactical Group Comments | M Barton | H Tilley |

CONTENTS

| | |
|--|-----------|
| DEFINITIONS | 5 |
| 1 INTRODUCTION..... | 6 |
| 1.1 Precinct Overview | 6 |
| 1.2 Scope and Purpose..... | 9 |
| 1.3 Structure of this quarterly Construction Compliance Report | 9 |
| 1.4 Periodic Review..... | 10 |
| 2 PROJECT DESCRIPTION..... | 11 |
| 2.1 Site Location..... | 11 |
| 2.2.1 Works Phases | 11 |
| 2.3 Works Undertaken – July 2018 – September 2018 | 13 |
| 3 PROJECT COMPLIANCE | 14 |
| 3.1 Inspections | 14 |
| 3.1.1 Internal Inspections | 14 |
| 3.1.2 Environmental Representative Inspections | 14 |
| 3.2 Other Regulator Inspections | 14 |
| 3.3 Audits | 14 |
| 3.3.1 Internal Audits | 14 |
| 3.3.2 External Audits | 15 |
| 3.4 Environmental Monitoring..... | 15 |
| 3.4.1 Air Quality Monitoring | 15 |
| 3.4.2 Noise Monitoring | 15 |
| 3.4.3 Water Quality Monitoring..... | 16 |
| 3.5 Environmental Incidents..... | 16 |
| 3.6 Conditions of Consent Compliance Tracking..... | 19 |
| 3.6.1 Non-compliance | 19 |
| 3.7 Additional Approvals | 19 |
| 3.8 Complaints Management..... | 20 |
| 3.9 Newly Identified Environmental Risks..... | 20 |
| 3.9.1 Unexpected Contamination Finds | 20 |
| 4 COMPLIANCE SUMMARY..... | 21 |
| 4.1 Conclusion..... | 21 |

APPENDICES

APPENDIX A COMPLIANCE TABLE – MINISTERS CONDITIONS OF CONSENT

APPENDIX B COMPLIANCE TABLE – REVISED ENVIRONMENTAL MITIGATION MEASURES

DEFINITIONS

| Acronym | Meaning |
|------------------------|--|
| ACM | Asbestos Containing Materials |
| CEMP | Construction Environmental Management Plan |
| CFFMP | Construction Flora and Fauna Management Plan |
| CNVMP | Construction Noise and Vibration Management Plan |
| CoC | Conditions of Consent |
| CTP | Compliance Tracking Programme |
| DP&E | Department of Planning and Environment |
| EPA | Environmental Protection Authority |
| EP&A Act | <i>Environmental Planning and Assessment Act 1979</i> |
| EPL | Environmental Protection Licence |
| ER | Environmental Representative |
| ERSED | Erosion and Sediment Controls |
| FCMM's | Final Compilation of Mitigation Measures |
| IMEX | Import-Export |
| MPE | Moorebank Precinct East |
| MPW | Moorebank Precinct West |
| NCA | Noise Catchment Area |
| OOH | Out of Hours |
| PCCR | Pre-Construction Compliance Report |
| PEDR | Land Preparation Works – Precinct Demolition and Remediation |
| PIWE | Precinct Infrastructure Works East |
| PSP | Project Specific Procedure |
| RAP | Remediation Action Plan |
| RfMA | Request for Minor Amendment |
| Secretary | Secretary under the EP&A Act, or nominee |
| SIMTA | Sydney Intermodal Terminal Alliance |
| Site Auditor | Contaminated land accredited auditor |
| SSD | State Significant Development |
| the Moorebank Precinct | Moorebank Intermodal Precinct |

1 INTRODUCTION

1.1 Precinct Overview

The Sydney Intermodal Terminal Alliance (SIMTA) and Moorebank Intermodal Company have entered into an agreement to develop the Moorebank Precinct East (MPE) Project and Moorebank Precinct West (MPW) Project into the Moorebank Intermodal Precinct (the Moorebank Precinct).

When completed, the Moorebank Precinct will move 1.5 million shipping containers annually by rail instead of road. It will also feature Australia's largest purpose-built warehouse and distribution precinct serviced by the latest automated technology which will see driverless shuttle carriers collect and transport containers around the precinct to be processed, unpacked and stored on site or distributed in smaller consignments

Contractors have been appointed to undertake three packages of works under the current approvals across both the MPW and MPE Projects. Figure 1-1 describes the approvals and the relevant contractors appointed under each; Figure 1-2 shows the extent of the sites of each appointed contractor.

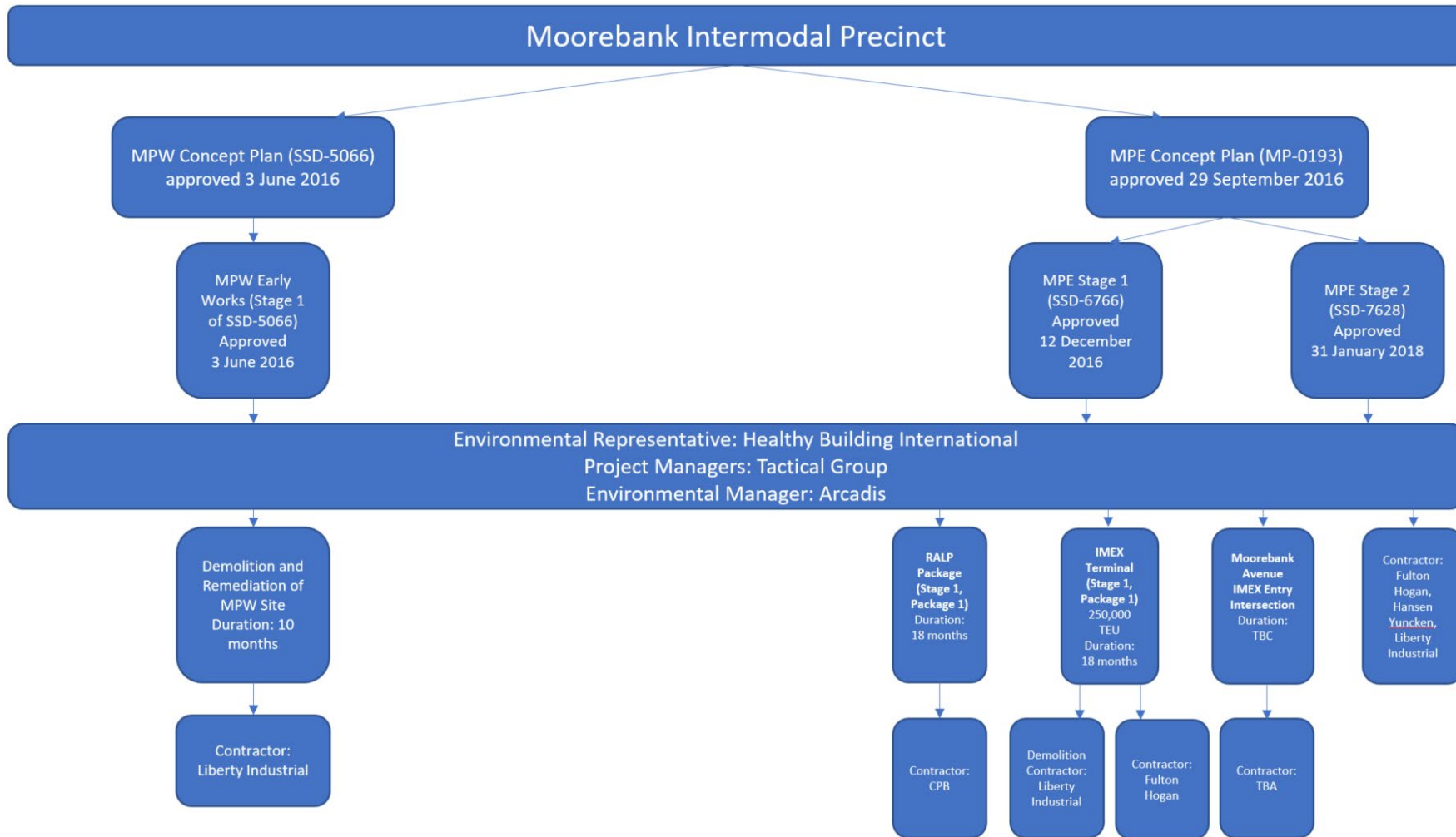



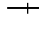



Figure 1-1 Overview of Moorebank Intermodal Precinct Contract Structure

MPE Stage 2 Quarterly Compliance Report



LEGEND

-  MPE Site
-  MPE Stage 2 construction area
-  Warehouse 1 Precinct
-  Existing railway
-  Watercourse

ARCADIS AUSTRALIA PACIFIC PTY LTD
 ABN 76 104 485 289
 Level 16, 500 George St | Sydney NSW 2000
 P: +61 (0) 2 8907 9000 | F: +61 (0) 2 8907 9001
 Coordinate System: GDA 1994 MGA Zone 56
 Aerial imagery supplied by nearmap (Sept, 2018)



Figure 1-2: The extent of the MPE Stage 2 works footprint

1.2 Scope and Purpose

The Sydney Intermodal Terminal Alliance (SIMTA) received approval for the construction and operation of Stage 2 of the Moorebank Precinct East (MPE) Project (SSD 7628), which comprises the second stage of development under the MPE Concept Consent (MP10_0193).

Compliance tracking and reporting requirements for MPE Stage 2 are specified in Condition of Consent (CoC) C21 *Compliance Monitoring and Tracking*, which is detailed in Table 1-1. In addition, the Final Compilation of Mitigation Measures (FCMMs) from the MPE Stage 2 Response to Submissions (RtS) are addressed for compliance tracking purposes.

This report represents the first quarterly report required under CoC C21 (c) (ii), and outlines progress of compliance against the relevant construction requirements for the period July 2018 to September 2018.

Table 1-1 – Requirements for Compliance Reporting.

| CoC | Condition | Reference |
|-----|---|---|
| C21 | The Proponent must prepare and implement a Compliance Tracking Program (CTP) to track compliance with the requirements of this approval. The Compliance Tracking Program must be submitted to the Secretary for approval prior to the commencement of construction. The Compliance Tracking Program must include, but not be limited to: | The CTP has been prepared to satisfy this condition. CTP (Rev 5) dated 24 May 2018 was approved by DP&E on 8 June 2018 prior to the commencement of construction. |
| (c) | provision for periodic reporting of compliance status to the Secretary, including but not limited to: (i) a Pre-Construction Compliance Report (PCCR) prior to the commencement of construction, | The Final PCCR was issued to the DP&E on 29 August 2018 |
| | (ii) quarterly Construction Compliance Reports (CCR), for the duration of construction, and | This quarterly compliance report has been prepared to satisfy this condition and provides a description of the compliance status of the Project for the period from July 2018 to September 2018, and will be provided to the Secretary for information. |

1.3 Structure of this quarterly Construction Compliance Report

The structure of this quarterly compliance report is as follows:

- **Section 1 – Introduction:** Provides a brief overview of the Moorebank East Precinct, and the purpose of this report.
- **Section 2 – Project Description:** Provides a brief summary of the MPE Stage 2 works and describes the works undertaken during the reporting period, both completed and ongoing.

- **Section 3 – Project Compliance:** Provides a summary of results of the various inspections, audits and environmental monitoring undertaken during the reporting period. It discusses environmental incidents that have occurred, changes to approved documentation, complaints and enquiries received and newly identified environmental risks to the Project Site.
- **Section 4 – Compliance Summary:** Provides a conclusion of the report.

The appendices include the compliance tracking spreadsheets.

1.4 Periodic Review

This report has been prepared by Arcadis with input from SIMTA and construction contractors, in accordance with the CTP requirements

The report integrates information collated from regular compliance activities, such as progress meetings, inspections, client surveillance and monitoring have been undertaken in accordance with the relevant Construction Environmental Management Plan (CEMP) and sub-plans. Environmental controls are inspected regularly to ensure their ongoing suitability and effectiveness as detailed in Section 3 of this report.

2 PROJECT DESCRIPTION

2.1 Site Location

The MPE site, including the Project site, is located approximately 27 kilometres (km) south-west of the Sydney Central Business District (CBD) and approximately 26 km west of Port Botany and includes the former Defence National Storage and Distribution Centre (DNSDC) site. The MPE site is situated within the Liverpool Local Government Area, in Sydney's South West subregion, approximately 2.5 km from the Liverpool City Centre.

2.2 Scope of Works

Key components of the MPE Stage 2 works include:

- Earthworks including the importation of 600,000 m³ of fill and vegetation clearing
- Approximately 300,000 m² gross floor area (GFA) of warehousing and ancillary offices
- Warehouse fit-out
- Freight village, 8,000 m² GFA of ancillary retail, commercial and light industrial land uses
- Internal road network and hardstand across the site
- Ancillary supporting infrastructure within the site, including:
 - Stormwater, drainage and flooding infrastructure
 - Utilities relocation/installation
 - Fencing, signage, lighting, remediation and landscaping
- Moorebank Avenue upgrade including:
 - Raising by about two metres and some widening
 - Embankments and tie-ins to existing Moorebank Avenue road levels
 - Signalling and intersection works
- Intersection upgrades along Moorebank Avenue including:
 - Moorebank Avenue/MPE Stage 2 access
 - Moorebank Avenue/MPE Stage 1 northern access
 - Moorebank Avenue/MPE Stage 2 central access
 - Moorebank Precinct West (MPW) Southern Access/MPE Stage 2 southern emergency access.

2.2.1 Works Phases

The Project construction period is anticipated to be approximately 24 to 36 months, which will be generally divided into three works phases:

- **Early Works** includes the following works:
 - Importation, stockpiling and placement of up to 60,000 m³ of imported clean general fill
 - Clearing of non-native vegetation

- Stabilisation of areas where topsoil has been stripped with imported clean hard fill
- Removal of asbestos from heating equipment and fire-resistant building elements (e.g. fire doors)
- Hazardous material cleaning and decontamination in Buildings 67, 69, 81 and 83
- Heritage salvage works in Buildings 37, 75 and 80
- Establishment of a site access point at the existing MPE site northern access
- Establishment of temporary site fencing, a site compound(s) and temporary car parking areas
- **Construction Phase A** includes the following key components:
 - Completion of site preparation activities
 - Importation, stockpiling and placement of up to 600,000 m³ of imported clean general fill
 - Installation of on-site detention (OSD) and drainage infrastructure
 - Construction of retaining walls
 - Construction and internal fit-out of warehousing
 - Installation of road furniture and pavement construction
- **Construction Phase B** includes the following key components:
 - Construction of Moorebank Avenue Diversion Road
 - Bulk earthworks and relocation and installation of utilities
 - Pavement works along Moorebank Avenue

Three contractors have been engaged to undertake the MPE Stage 2 scope of works. (See Figure 1-1). For reporting purposes, the works have been divided into two work packages:

- Land Preparation Works – Demolition and Remediation (PEDR) (generally early works)
- Precinct Infrastructure Works East (PIWE) (generally construction Phase A).
- Warehouse 1 Precinct East (W1PE) Construction

The package of works and scope of works applicable to each contractor is described in more detail in Table 2-1.

Table 2-1 – Contractors scope of works for MPE Stage 2

| Contractor | Package of Works | Scope of Works |
|--------------------|------------------|--|
| Liberty Industrial | PEDR | Demolition of existing warehouses and hardstands to clear the site, prior to establishing the land to allow the PIWE works to commence |
| Fulton Hogan | PIWE | Bulk earthworks (including placement of imported fill and undertaking cut to fill), installation of drainage and utilities and pavement works. |
| Hansen Yuncken | W1PE | Construction and fit-out of Warehouse 1. |

As land preparation works are completed by Liberty International during the reporting period, the areas are progressively handed over to Fulton Hogan to allow for the commencement of bulk earthworks for PIWE. Once bulk earthworks are completed in a nominated area, the site is handed over to Hansen Yuncken to allow warehouse construction to commence.

2.3 Works Undertaken – July 2018 – September 2018

The following construction activities have been carried out as part of MPE Stage 2:

PEDR

- Asphalt road demolition
- Demolition of Building 32, 33, 40, 44, 46 and 48
- Demolition of slab at Building 46
- Construction of sediment basins
- Emu-lobbing of asbestos fragments around Building 35 and 40
- Loadout of scrap metal from Building 33 and 40
- Loadout of demolition waste from Building 39
- Loadout out of asbestos and contaminated soils from Building 34 and 52
- Screening of asbestos soils from Building 34
- Application of polymer to sediment basin stockpile
- Removal of stormwater pipes from Building 48
- Tree removal along Moorebank Avenue
- Relocation of habitat tree logs to EEC zone
- Transportation of stormwater pipes from Building 7 to stockpiling area
- Removal of stormwater pipes from Building 35 and 40
- Concrete processing from Building 39
- Stormwater channel demolition
- Screening trials for Building 13
- Establishment of screening at Building 34

PIWE

- Bulk Earthworks
- Placement and compaction of imported fill
- Placement and management of the structural material zone
- Installation of drainage and utilities for warehousing
- Construction of precinct drainage and flood retention measures

W1PE

- Warehouse framework construction

3 PROJECT COMPLIANCE

3.1 Inspections

3.1.1 Internal Inspections

Internal inspections are undertaken by Environmental Advisors for each of the contractors on a regular basis. These are interspersed by inspections undertaken by the Environmental Representative (ER) as detailed in the following Section.

One non-compliance was identified during a site inspection during this reporting period. This non-compliance is addressed in more detail in Section 3.6.1

3.1.2 Environmental Representative Inspections

The ER undertook six inspections across the MPE Stage 2 site during this reporting period.

Monthly reports were submitted to DP&E by the ER in July, August and September 2018 within 7 days of the end of the reporting period, in accordance with CoC C24(i).

The dates on which ER inspections were undertaken are listed below:

PEDR, PIWE and W1PE

- MPES2 ER Inspection 7 – 10/07/2018
- MPES2 ER Inspection 8 – 24/07/18
- MPES2 ER Inspection 9 – 09/08/18
- MPES2 ER Inspection 10 – 23/08/18
- MPES2 ER Inspection 11 – 06/09/18
- MPES2 ER Inspection 12 – 20/09/18

3.2 Other Regulator Inspections

No inspections were undertaken by regulators during this reporting period.

3.3 Audits

3.3.1 Internal Audits

No internal environmental audits were undertaken during this reporting period. An audit has been arranged for 3-8 October 2018.

Three internal site safety reviews of the safety management system and project specific safety documentation for compliance with WHS legislation, codes of practice and contract documents for PEDR were undertaken by Construction and Remediation Advisory Services Pty Ltd (CARAS). These reviews were undertaken as follows:

- 25 July 2018
- 22 August 2018
- 19 September 2018

3.3.2 External Audits

No external audits were undertaken during this reporting period.

3.4 Environmental Monitoring

In accordance with the CoC and CEMP environmental monitoring activities are required to be undertaken for the construction phase of the MPE Stage 2 project. These include air quality monitoring, noise monitoring and water quality monitoring.

3.4.1 Air Quality Monitoring

Sydney Laboratory Services (subsidiary of A.D. Envirotech Australia Pty Ltd) were originally engaged by Liberty Industrial to conduct daily airborne asbestos fibre monitoring as part of the larger MPE project. Sydney Laboratory Services conducted the airborne asbestos fibre monitoring for MPE Stage 2 during July and August 2018. JBS&G Australia Pty Ltd took over daily airborne asbestos fibre monitoring in September 2018.

Results during this reporting period, are as follows:

- Airborne asbestos fibre levels across the site were found to be below 0.01 fibres/mL.

This is compliant with the safe airborne fibre levels established in the Contamination Management Plan (CMP) dated 15 January 2018 and prepared for Results during this reporting period.

Fulton Hogan took over the dust monitoring requirements on the 27 November 2017 from Liberty Industrial. Particulate matter (PM₁₀) monitoring was undertaken at two boundary locations consistent with the previously installed gauges (Moorebank Ave and Stockpile Site) using the 'The DustTrak™ II Aerosol Monitor' system, which were sited in accordance with AS3580.1.1:2016 *Method for sampling and analysis of ambient air. Part 1.1: Guide to siting air monitoring equipment*.

Monitors are connected to a solar array and battery storage system. Real time results are available via a Cloud Data Management System.

Results during this reporting period are as follows:

- Dust monitoring during this reporting period showed no total deposited dust results greater than 4g/m²/month, as such no exceedances directly related to construction works were recorded during this reporting period.

3.4.2 Noise Monitoring

Liberty Industrial engaged Day Design Pty Ltd to conduct attended noise compliance monitoring at the nearest four residential Noise Catchment Areas (NCAs) during various activities occurring on site.

Results during this reporting period, are as follows:

- Noise levels at each NCA were found to be compliant with the Noise Management Levels (NML) established in the Construction Noise and Vibration Management Plan (CNVMP) dated 26 April 2017 and prepared for the MPE site by Environmental Resource Management (ERM).

Fulton Hogan conducted attended noise compliance monitoring at the nearest four residential NCAs during various activities occurring on site.

Results during this reporting period are as follows:

- Based on the monitoring results from monitoring events and the noise criteria in the CNVMP, Fulton Hogan has had no noise exceedances from construction works and has had no impact on the surrounding community with regards to noise generation.
- No complaints have been received from the community or any regulators relating to noise or vibration from the construction for MPE Stage 2.

3.4.3 Water Quality Monitoring

Prior to discharge, the quality of discharge water is to be tested and characterised to demonstrate compliance. Criteria include total suspended solids (TSS) of 50 mg/L, pH of 6.5-8.5 and oil and grease (visible sheen).

Fulton Hogan use the water quality monitoring form to manage dewatering (*Fulton Hogan Dewatering Permit*). Liberty Industrial use a “*Discharge or Water Reuse Approval*” form to manage water use

Results during this reporting period are as follows:

- There were no discharges
- Water quality was not monitored in Anzac Creek as water levels were too low to collect samples.

3.5 Environmental Incidents

Five environmental incidents occurred during the reporting period as outlined below (Table 3-1). Most of these incidents were classified minor in nature and were rectified as soon as practically possible.

Table 3-1 Summary of Environmental Incidents

| Incident Number | Date | Incident Description | Immediate Action | Cause | Corrective Actions |
|-----------------|------------|---|---|---|---|
| PEDR | | | | | |
| 1 | 15/08/2018 | Contaminated stockpiles not covered as per CMP | N/A | The 24-hour time frame had elapsed due to Liberty unnecessarily awaiting direction from the Principal. | Liberty have been made aware, by the principal of their roles and responsibilities associated with the management plans and have committed to all stockpiles being assessed and if contamination is confirmed it is disposed of within 24 hours. In addition improved efficiency within laboratory analysis turn-around times and improved procedures have assisted in addressing this issue. |
| 2 | 09/09/2018 | Water with SB10 not discharged within 5 days of rainfall event; PFAS contamination was found within the water | The water was tested for PFAS contamination and following the review of results, the water was used for dust suppression in the basin catchment area. | Liberty advised that using the water as dust suppression within the basin catchment area would not be sufficient in terms of emptying enough water out of the basin in order to achieve the required capacity prior to the next rain event. | Alternative options for treatment of the PFAS contaminated water have been proposed, including the mobilisation of a PFAS mobile treatment plant. |
| 3 | 20/09/2018 | Lack of dust suppression witnessed during ER site inspection | Liberty Industrial mobilised an additional water cart to site and allocated to the Building 13/IMEX Unsuitable stockpile area to be used in dry conditions whilst the material is being transported to the CATA area. | No water truck available during excavation works | An amendment to the CMP was requested on 10/09/18 to change the wording used in Section 10.5 relating to improving dust suppression during excavation works |

MPE Stage 2 Quarterly Compliance Report - #01 – July- September 2018

| Incident Number | Date | Incident Description | Immediate Action | Cause | Corrective Actions |
|-----------------|------------|---|--|--|---|
| 4 | 20/09/2018 | During a site inspection, a vehicle was noted leaving the asbestos work area without being washed down as per the CMP requirements. | N/A | An ambiguous Work Method Statement in terms of Asbestos in Soils Work Areas and loading procedures and low risk of cross contamination on the CMP was not consulted to ensure work procedures were not consistent. | The Work Method Statement will be updated to remove ambiguity and procedures implemented to ensure ADTs do not need to enter the Asbestos in Soils Work Areas. |
| 5 | 24/09/18 | Damage to threatened flora species by stockpiling works and traffic movement in the southern portion of the site. | Liberty Industrial engaged an independent ecologist from Biosis to conduct an assessment on impacts and compliance with the CFFMP and CoC. | Segregation flagging was not located in an area that adequately protected the threatened flora species. | Liberty created an exclusion zone of 35 metres from the nearest mapped threatened species, updated the site induction and conducted a toolbox talk meeting to more clearly communicate the extents of this exclusion zone and importance of protecting these threatened species with this now also posted on the site notice board. |
| PIWE | | | | | |
| 1 | | No reported incidents for the period | | | |
| W1PE | | | | | |
| 1 | | No reported incidents for the period | | | |

3.6 Conditions of Consent Compliance Tracking

Compliance with the CoC and FCMMs are provided in Appendix A and Appendix B, respectively. It is noted that only the FCMMs applicable to construction have been included within Appendix B.

As evident from the tables, the project is generally compliant with the relevant CoC, or is progressing actions to ensure compliance.

One non-compliance has been identified and is detailed below.

3.6.1 Non-compliance

One non-compliance against the project approval was recorded during this reporting period. The incident occurred on 12 September 2018 and was a non-compliance with B104 which requires the retirement of biobanking credits prior to construction.

The incident occurred during the preparation of ERSED controls and stockpile on the south east of the MPE Stage 2 site, whereby contractor construction vehicles traversed an area of occupancy of the endangered *Hibbertia puberula* subsp. *puberula*. The incident was detected by the Principal's Representative during a site inspection on 13 September 2018.

Immediate steps after detection included the cessation of works and the removal of construction vehicles from the area. The Project Ecologist was contacted to assess the nature and scale of impact. The DP&E and the Environmental Representative were notified on 14 September 2018 (CoC C11) and in accordance with CoC 13 a detailed report of this incident was prepared.

Further actions were identified in relation to the incident and are summarised below:

- Discussion with DP&E post-approvals regarding the:
 - Status of the biobanking agreement with OEH
 - Biodiversity Offset Package
 - Progress of request to adjust retirement timing under B104
- A detailed investigation of the incident (as per CoC C13)
- Construction Flora and Fauna Management Plan (CFFMP) controls to be reviewed for application on the basis of approved management plans
- Reiteration of CFFMP requirements through contractor toolbox talks, inductions and ER meetings.

3.7 Additional Approvals

This section discusses instances where changes to approved documentation under the CoC have been made and submitted to the ER for review and approval. The following additional approvals were sought during this reporting period.

3.7.1 PIWE

- Review Request for Minor Amendment RfMA003 proposal for Stormwater Management Plan – Warehouse 1 Precinct, dated 3 August 2018. ER endorsement was provided on 21 August 2018.

- Review RfMA005 Proposal for Construction Soil and Water Management Plan Appendix A: Construction Erosion and Sediment Control Plan, dated 29 August 2018. ER Endorsement was provided on 3 September 2018.

3.7.2 Out of Hours

No out of hours' (OOH) works requests were submitted during this reporting period.

3.8 Complaints Management

No complaints or enquiries were recorded during this reporting period. Complaints and enquiries are managed in accordance with the Community Communication Strategy Section 7.6 *Complaints and Enquiry Handling Flowchart* by an independent third party.

3.9 Newly Identified Environmental Risks

3.9.1 Unexpected Contamination Finds

One unexpected find was encountered during the reporting period. Liberty Industrial uncovered an underground culvert that fed into the above ground stormwater channel in the north western corner of the site. The culvert extended south to the carpark adjacent Building 52, approximately 200m. The walls and roof of the culvert were approximately 200 mm thick, width approximately 2200 mm.

Additional works associated with this culvert include the excavation of overburden material, hammering of the concrete culvert, loading and transporting to the concrete stockpile, and processing.

4 COMPLIANCE SUMMARY

4.1 Conclusion

At the completion of this compliance period, it has been deemed that works have generally been undertaken in compliance with the CoC.

One non-compliance (Incident 5 – Table 3-1) against the project approval was recorded during this reporting period and is currently being addressed in consultation with the DP&E and the OEH.

No other outstanding non-compliance issues have been identified and works are generally being undertaken in accordance with the approved CEMP, the CoC and the FCMMs.

Regular review of compliance against the CoC and the FCMMs will continue to be undertaken.

APPENDIX A COMPLIANCE TABLE – MINISTERS CONDITIONS OF CONSENT

| CoC | Requirement | High Level Phases | Timing for Compliance | Works Area/Package (per Appendix I, Table 4-8 of RTS); Phase (per CoC A18) | | | | Secretary Approval Required? | Compliance Status | Date of Approval/ Compliance | Evidence |
|-----|---|-------------------|---|--|---|---|----------------------------|------------------------------|-------------------|---|---|
| | | | | Works Area/Package (per Appendix I, Table 4-8 of RTS); Phase (per CoC A18) | Construction Phase A (excl Moorebank Ave) (Phase B & C) | Construction Phase B (Moorebank Avenue Works) (Phase B & C) | Operation (Phase D, E & F) | | | | |
| A1 | In addition to meeting the specific performance measures and criteria established under this consent all reasonable measures must be implemented to prevent, and if prevention is not reasonable, minimise, any harm to the environment that may result from the construction and operation of the development, and any rehabilitation required under this consent. | All | Throughout Construction and Operation | Y | Y | Y | Y | Y | Ongoing | | All Plans |
| A2 | The development may only be carried out: (a) in compliance with the conditions of this consent; (b) in accordance with all written directions of the Secretary in relation to this consent; | All | Throughout Construction and Operation | Y | Y | Y | Y | Y | Ongoing | | All plans - requirement to address the FCMMs in the plans |
| A3 | The Secretary may make written directions to the Applicant: (a) as a result of the Department's assessment of any strategy, plan, program, review, audit, notification, report or correspondence submitted under or in relation to this consent; | All | Throughout Construction and Operation | Y | Y | Y | Y | N | N/A | | No written directions to the Applicant have been made by the secretary |
| A4 | The conditions of this consent and directions of the Secretary prevail to the extent of any inconsistency, ambiguity or conflict between them and a document listed in condition A2(c) or A2(e). In the event of an inconsistency, ambiguity or conflict between any of the documents listed in condition A2(c) and A2(e), the most recent document prevails to the extent of the inconsistency, ambiguity or conflict. For the purpose of this condition, there will be an inconsistency between documents if it is not | All | Throughout Construction and Operation | Y | Y | Y | Y | N | N/A | | No inconsistencies have been triggered. |
| A5 | This consent lapses five years after the date from which it operates, unless the development has physically commenced on the land to which the consent applies before the date on which the consent would otherwise lapse under section 95 of the EP&A Act. | Construction | Early works and fill importation | Y | Y | Y | Y | N | Compliant | 2/02/2018 | DP&E notified via email for early works and construction 27/02/2018 |
| A6 | The total volume of spoil to be imported, including fill required to raise Moorebank Avenue and spoil imported during early works must not exceed 600,000m3. | Construction | Construction | Y | Y | Y | Y | Y | Ongoing | CTAMP: 15/06/2018 CSWMP & CSMP: 8/06/2018 | CTAMP: 15/06/2018 CSWMP & CSMP: 8/06/2018 |
| A7 | No works are permitted within the Defence Joint Logistics Unit site under this approval | Construction | Construction | Y | Y | Y | Y | Y | Compliant | CEMP: 8/06/2018 | CEMP |
| A8 | The container freight road volume must not exceed 250,000 TEUs p.a., subject to the exception identified in condition A9, which may only be considered under condition A9 after the facility has been in operation. | Operation | Operation | N | N | N | Y | Y | Not triggered | | OEMP |
| A9 | The movement of container freight by road may exceed the 250,000 TEU limit p.a. by up to a further 250,000 TEU p.a., if the Secretary is satisfied that traffic monitoring and modelling of the operation of the facility demonstrate that traffic movements resulting from the proposed increase in TEU will achieve the objective of not exceeding the capacity of the transport network. | Operation | Operation | N | N | N | Y | Y | Not triggered | | OEMP |
| A10 | In determining the TEU limit, the Secretary may take account any roadworks or mitigation measures proposed under a Voluntary Planning Agreement to minimise traffic impacts. | All | Throughout Construction and Operation | N | N | N | Y | N | Ongoing | | OEMP |
| A11 | The maximum GFAs for the following uses apply: (a) 300,000m2 for the warehousing and distribution facilities; and (b) 8,000m2 for the freight village. | Operation | Operation | N | N | N | Y | Y | Not triggered | | OEMP |
| A12 | The warehousing and distribution facilities must only be used for activities associated with freight using the MPE Stage 1 rail intermodal terminal. | Operation | Operation | N | N | N | Y | Y | Not triggered | | OEMP |
| A13 | Freight village tenants and occupations are restricted to those activities that provide: (a) ancillary support for the development, its tenants, worker population and visitors; (b) a nexus with activities undertaken in relation to the warehouse, logistics functions of the IMT development and/ or; | Operation | Operation | N | N | N | Y | Y | Not triggered | | OEMP |
| A14 | With the approval of the Secretary, the Applicant may submit any strategy, plan or program required by this consent on a staged basis. | All | Throughout Construction and Operation | Y | Y | Y | Y | Y | Compliant | CTP: 8/06/2018 DDS: 29/03/2018 | The CTP (Rev 5) dated 24 May 2018, was approved by DP&E on 8/06/2018 Document Delivery Strategy (DDS) |
| A15 | If the submission of any strategy, plan or program is to be staged, then the relevant strategy, plan or program must clearly describe the specific stage of the development to which the strategy, plan or program applies, the relationship of the stage to any future stages and the trigger for updating the strategy, plan or program. | All | Throughout Construction and Operation | Y | Y | Y | Y | Y | Compliant | CTP: 8/06/2018 DDS: 29/03/2018 | The CTP (Rev 5) dated 24 May 2018, was approved by DP&E on 8/06/2018 Document Delivery Strategy (DDS) |
| A16 | With the approval of the Secretary, any strategy, plan or program required by this consent may be combined | All | Throughout Construction and Operation | N | Y | Y | Y | N | Ongoing | | CERSEMP and SWMP |
| A17 | In seeking the Secretary's approval, a clear relationship must be demonstrated between the strategies, plans or programs that are proposed to be combined. | All | Throughout Construction and Operation | N | Y | Y | Y | Y | Ongoing | | All plans |
| A18 | The date of commencement of each of the following phases of the development must be notified to the Department, at least one month before that date: (a) early works; (b) fill importation; | Pre-construction | One month before commencement of each stage | Y | Y | Y | Y | Y | Compliant | 2/02/2018 | DP&E notified via email for early works and construction 27/02/2018 |
| A19 | Where conditions of this consent require a document to be prepared in consultation with an identified party, the Applicant must: (a) consult with the relevant party prior to submitting the subject document to the Secretary for approval; (b) provide evidence that at least two weeks was provided for the relevant party to comment on the document; and (c) include in the document: (i) details of the consultation undertaken; (ii) a description of how matters raised by those consulted have been resolved to the satisfaction of both the Applicant and the party consulted; and (iii) details of any disagreement remaining between the party consulted and the Applicant and how the Applicant has addressed the matters not resolved. | All | Throughout Construction and Operation | Y | Y | Y | Y | Y | Compliant | CEMP, CSWMP, CSMP, CTP: 8/06/2018 CTAMP-A, CVNMP, CHMP: 15/06/2018 | Stakeholder consultation outcomes addressed within each management plan. |
| A20 | All licences, permits, approvals and consents as required by law must be obtained and maintained as required for the development. No condition of this consent removes the obligation for the Applicant to obtain, renew or comply with such licences, permits, approvals and consents. | All | Throughout Construction and Operation | Y | Y | Y | Y | Y | Compliant | 8/06/2018 | CEMP (Rev 4) dated 5 April 2018, approved by DP&E 8/06/2018 Specific licence/permit requirements are addressed in each subplan. |
| A21 | All demolition work must be carried out in accordance with the latest version of Australian Standard AS 2601-2001: The Demolition of Structures (Standards Australia, 2001) and the requirements of the Work Health and Safety Regulation 2011. | Pre-construction | Prior to commencement of Construction | Y | Y | N | Y | Y | Compliant | 8/06/2018 | Section 1.3.3 of CEMP (Rev 4) dated 5 April 2018, approved by DP&E 8/06/2018 |
| A22 | Prior to construction, the Applicant must prepare amended Development Layout Plans and Design Plans to the satisfaction of the Secretary which achieve the improvements and revisions referred to in conditions B140 and B141, including integration of Water Sensitive Urban Design (WSUD) and landscape design. | Pre-construction | Prior to commencement of Construction | N | Y | Y | Y | Y | Compliant | 3/07/2018 | Development Layout Plans and Design Plans for Warehouse Precinct 1 (issue B and C) dated 20 June 2010 were approved by the DP&E 3/07/2018 |
| A23 | Prior to commencement of early works and fill importation, the Applicant must prepare amended WSUD plans that incorporate water sensitive urban design principles, be generally in accordance with relevant Council policies, plans and specifications, and address condition B40, to ensure that: (a) the stormwater and drainage systems for the development will operate independently of any works proposed as part of the MPW Stage 2 development application (SSD 7709) that have not been incorporated in this development, unless development consent has been granted to those works under SSD 7709 prior to commencement of early works and fill importation; (b) adequate overland flow paths have been provided in the event of stormwater system blockages and flows in excess of the 1% ARI rainfall event; (c) on site detention basins are visually unobtrusive; (d) that the design of the basins, and, associated setbacks and fencing, ensures public safety; (e) adequate site area has been provided for stormwater treatment; (f) design of stormwater treatment systems minimises the risk of failure; and (g) setback of drainage work and fencing has been finalised in consultation with RMS. | Pre-construction | Prior to commencement of Early works and fill importation | Y | Y | Y | Y | Y | Compliant | 2/07/2018 | The Stormwater Management Plan (SMP) will be phased. SMP-W1P (Rev 2) - 28 June 2018 is for the construction and operation of Warehouse 1 Precinct and demolition and completion of bulk earthworks for the remainder of the site. The SMP-W1P (Rev 2) - 28 June 2018, was approved by DP&E 2/07/2018. |
| A24 | Prior to commencement of permanent built surface works and/or landscaping, the Applicant must prepare amended architectural plans that reflect updated plans required under the conditions. | Pre-construction | Prior to commencement of permanent built surface works and/or landscaping | N | N | N | Y | Y | In Progress | | |
| A25 | The siting, design and construction of premises available to the public are to ensure an appropriate level of accessibility so that all people can enter and use these premises. Access is to meet the requirements of the Disability Discrimination Act 1992, relevant Australian Standards and Building Code of Australia (BCA) | Detailed design | Throughout Construction and Operation | N | Y | Y | Y | Y | In Progress | | |
| A26 | All new buildings and structures, and any alterations or additions to existing buildings and structures, that are part of the development must be constructed in accordance with the relevant requirements of the BCA. Note: • Under Part 4A of the EP&A Act, the Applicant is required to obtain construction and occupation certificates for the proposed building works. • Part 8 of the EP&A Regulation sets out the requirements for the certification of the development. | Detailed design | Throughout Construction and Operation | N | N | N | Y | Y | In Progress | | |
| A27 | Before the construction of any utility works associated with the development, approvals required from service providers must be obtained. | Pre-construction | Prior to commencement of Construction | Y | Y | N | Y | Y | Compliant | 8/06/2018 | Table 9 of CEMP (Rev 4) dated 5 April 2018. Utilities connections for the Project will be from the MPE Stage 1 site and approvals from utilities providers will not be required. |

| CoC | Requirement | High Level Phases | Timing for Compliance | Works Area/Package (per Appendix I, Table 4-8 of RTS); Phase (per CoC A18) | | | | Secretary Approval Required? | Compliance Status | Date of Approval/ Compliance | Evidence |
|-----|--|-------------------|---|--|---|---|----------------------------|------------------------------|-------------------|---|--|
| | | | | Works Area/Package (per Appendix I, Table 4-8 of RTS); Phase (per CoC A18) | Construction Phase A (excl Moorebank Ave) (Phase B & C) | Construction Phase B (Moorebank Avenue Works) (Phase B & C) | Operation (Phase D, E & F) | | | | |
| A28 | Prior to operation of the development, a compliance certificate for water and sewerage infrastructure servicing of the site under section 73 of the Sydney Water Act 1994 must be obtained. | Pre-operation | Prior to Operation | N | N | N | Y | Y | Not triggered | | EWEMP / CEMP - licences and permits |
| A29 | Before the commencement of construction, the Applicant must: (a) consult with the relevant owner and provider of utility services that are likely to be affected by the development to make suitable arrangements for access to, diversion, protection, and support of the affected infrastructure; (b) prepare a dilapidation report identifying the condition of all public infrastructure between the M5 and the site and any local roads identified in the Heavy Vehicle Route Plan required under condition B2 (including roads, gutters and footpaths); and (c) submit a copy of the dilapidation report to the Secretary and Council. | Pre-construction | Prior to commencement of Construction | Y | Y | Y | N | Y | Compliant | 8/06/2018 | Dilapidation surveys were undertaken prior to commencement of construction of the MPES1 and MPWS1 Project. The reports were resubmitted to DP&E, via email on 8/06/2018 to satisfy CoC A29(b) & (c), which requires preparation of a dilapidation report and its submission to the Secretary prior to commencement of construction of the MPES2 Project. |
| A30 | Unless the Applicant and the applicable authority agree otherwise, the Applicant must: (a) repair, or pay the full costs associated with repairing any public infrastructure that is damaged by carrying out the development; and (b) relocate, or pay the full costs associated with relocating any infrastructure that needs to be relocated as a result of the development. | All | Throughout Construction and Operation | Y | N | Y | Y | Y | Not triggered | | |
| A31 | Prior to the issue of a Construction Certificate, the Applicant must pay a monetary levy of 1% of the development Capital Investment Value (\$3,577,900) or other amount agreed to by Liverpool City Council for transport, drainage, community facilities, administration and professional and legal fees pursuant to section 94B(2) of the EP&A Act 1979. | Pre-construction | Prior to issue of Construction Certificate | N | Y | Y | Y | Y | Not triggered | | |
| A32 | All plant and equipment used at the site or to monitor the performance of the development must be: (a) maintained in a proper and efficient condition; and (b) operated in a proper and efficient manner. | All | Throughout Construction and Operation | Y | Y | Y | Y | Y | Compliant | 8/06/2018 | CEMP |
| B1 | The Applicant must: (a) prepare each plan, program and other documents in consultation with the specified stakeholders; (b) not commence each phase of the project until the plans, programs and other documents required under this consent are approved by or, where not required to be approved, submitted to the Secretary specified within the timeframes; and (c) implement the most recent version of the required plans and programs approved by the Secretary for the duration of the development. | All | Throughout Construction and Operation | Y | Y | Y | Y | Y | Compliant | CEMP, CSWMP, CSMP, CTP: 8/06/2018 CTAMP-A, CVNMP, CHMP: 15/06/2018 | Record of consultation included in all plans. |
| B2 | Prior to commencement of early works and construction, the Applicant must prepare a Construction Traffic and Access Management Plan (CTAMP) to the satisfaction of the Secretary. The Plan must form part of the CEMP required by condition C1 and must: (a) be prepared by a suitably qualified and experienced person whose appointment has been endorsed by the Secretary; (b) be prepared in consultation with Council, TNSW and RMS; (c) include details of all transport routes and traffic types to be used for development-related traffic, access and parking arrangements; (d) include a protocol for undertaking dilapidation surveys to assess the existing condition of the transport routes prior to construction works; and (e) include a protocol for the repair of any roads identified in the dilapidation surveys to have been damaged during construction and demolition works; (f) include details of: (i) staging of construction works; (ii) construction vehicle routes; (iii) heavy vehicle movements associated with spoil and demolition material transport off-site; (iv) construction traffic generation; (v) hours of construction; (vi) parking for workers; and (vii) access arrangements. (g) include a Heavy Vehicle Route Plan detailing: (i) the origin and destination of spoil / fill and demolition material; and (ii) details of the heavy vehicle routes to and from the site within the Campbelltown and Liverpool Local Government Areas (LGAs). (h) include details of the measures to be implemented to minimise traffic safety issues and disruption to local road users including pedestrians / cyclists during construction works, including: (i) temporary traffic controls, including detours and signage; (ii) how two lanes of traffic on Moorebank Avenue will be available at all times during construction (unless otherwise approved by RMS); (iii) temporary traffic controls, including detours and signage; (iv) notifying the local community about development-related traffic impacts; (v) responding to any emergency repair requirements or maintenance during construction; and (vi) a traffic management system for managing over sized vehicles. (i) include a driver's code of conduct that requires: (i) compliance with specified travelling speeds; (ii) drivers to adhere to specified transport routes, including no access from Cambridge Avenue; and (iii) drivers to implement safe driving practices. (j) include a program to monitor the effectiveness of these measures; and (k) detail procedures for notifying residents and the community (including local schools), of any potential disruptions to transport routes. | Pre-construction | Prior to commencement of Early works and fill importation | Y | Y | Y | Y | Y | Compliant | 15/06/2018 | EWTAMP was superseded by the CTAMP - Phase A (Rev 9) 15 June 2018 approved by the DP&E on 15/06/2018 |
| B3 | The Applicant must: (a) not commence early works or construction until the Construction Traffic Management Plan required by condition B2 is approved by the Secretary; and (b) carry out the development in accordance with the most recent version of the Construction Traffic Management Plan approved by the Secretary, | Pre-construction | Prior to commencement of Early works and fill importation | Y | Y | Y | Y | Y | Compliant | 15/06/2018 | EWTAMP was superseded by the CTAMP - Phase A (Rev 9) 15 June 2018 approved by the DP&E on 15/06/2018 |
| B4 | A Road Occupancy Licence is to be obtained from the Transport Management Centre for any works that may impact on traffic flows on Moorebank Avenue or the adjoining State road network during construction activities. | Pre-construction | Prior to commencement of Construction | N | Y | Y | Y | Y | Compliant | 15/06/2018 | EWTAMP was superseded by the CTAMP - Phase A (Rev 9) 15 June 2018 approved by the DP&E on 15/06/2018. Section 2.2.1 addressed ROL's. |
| B5 | A construction zone will not be permitted on Moorebank Avenue without the express approval of RMS. | Pre-construction | Prior to commencement of Construction | N | N | Y | Y | Y | Compliant | 15/06/2018 | EWTAMP was superseded by the CTAMP - Phase A (Rev 9) 15 June 2018 approved by the DP&E on 15/06/2018. Section 2.2.1 addressed ROL's and occupancy of Moorebank Avenue. |
| B6 | All demolition and construction vehicles must be contained wholly within the site and vehicles must enter the site before stopping. | Construction | Construction | Y | Y | Y | Y | Y | Ongoing | 15/06/2018 | EWTAMP was superseded by the CTAMP - Phase A (Rev 9) 15 June 2018 approved by the DP&E on 15/06/2018. Section 2.2.1 addressed ROL's and occupancy of Moorebank Avenue. |
| B7 | All vehicles are to enter and leave the site in a forward direction. | Construction | Early works and fill importation | Y | Y | Y | Y | Y | Ongoing | 15/06/2018 | EWTAMP was superseded by the CTAMP - Phase A (Rev 9) 15 June 2018 approved by the DP&E on 15/06/2018. Section 2.2.1 addressed ROL's and occupancy of Moorebank Avenue. |
| B8 | All trucks entering or leaving the site with loads must have their loads covered and must not track dirt onto any public road | All | Throughout Construction and Operation | Y | Y | Y | Y | Y | Ongoing | 15/06/2018 | EWTAMP was superseded by the CTAMP - Phase A (Rev 9) 15 June 2018 approved by the DP&E on 15/06/2018. Section 2.2.1 addressed ROL's and occupancy of Moorebank Avenue. |
| B9 | Prior to commencement of any importation of site fill, the Applicant must undertake a Road Safety Audit for heavy vehicle movements associated with the importation of fill, for construction vehicle swept paths in and out of the development site via the proposed temporary construction access points along Moorebank Avenue, and for motorists and construction vehicle movements along Moorebank Avenue during the staged road upgrade works identified in condition B13. The Road Safety Audit is to be prepared by an independent TNSW accredited road safety auditor in accordance with the relevant Austroads guidelines to identify any safety issues. The Road Safety Audit must consider road safety issues for the proposed construction access arrangements and affected vehicle movements during upgrade works on Moorebank Avenue. The Applicant must recommend corrective actions for the identified safety issues and propose appropriate traffic management measures (i.e. temporary traffic signals and other traffic management measures) in consultation and with the approval of the relevant Council, TNSW and RMS. | Pre-construction | Prior to commencement of Early works and fill importation | Y | Y | Y | Y | Y | Compliant | 19/02/2018 | A Road Safety Audit dated 19/02/2018 has been undertaken. No corrective actions were identified |

| CoC | Requirement | High Level Phases | Timing for Compliance | Works Area/Package (per Appendix I, Table 4-8 of RTS); Phase (per CoC A18) | | | | Secretary Approval Required? | Compliance Status | Date of Approval/ Compliance | Evidence |
|-----|---|-------------------|---|--|---|---|----------------------------|------------------------------|-------------------|-------------------------------------|--|
| | | | | Works Area/Package (per Appendix I, Table 4-8 of RTS); Phase (per CoC A18) | Construction Phase A (excl Moorebank Ave) (Phase B & C) | Construction Phase B (Moorebank Avenue Works) (Phase B & C) | Operation (Phase D, E & F) | | | | |
| B10 | The swept path of the longest vehicle entering and exiting the subject site, as well as manoeuvrability through the site, must be in accordance with Austroads requirements. Prior to commencement of construction on permanent infrastructure a plan must be submitted to the Secretary and RMS for approval, which shows that the proposed development complies with this requirement. | Pre-construction | Prior to commencement of construction on permanent infrastructure | N | Y | Y | Y | Y | Compliant | 15/06/2018 | EWTAMP was superseded by the CTAMP - Phase A (Rev 9) 15 June 2018 approved by the DP&E on 15/06/2018. Section 2.2.1 addressed ROL's and occupancy of Moorebank Avenue. |
| B11 | The layout of the proposed car parking areas associated with the subject development (including driveways, grades, turn paths, sight distance requirements in relation to landscaping and/or fencing, aisle widths, aisle lengths, and parking bay dimensions) must be in accordance with AS2890.1-2004 Parking facilities Off-street car parking, AS2890.6-2009 Parking facilities Off-street parking for people with disabilities and AS2890.2-2002 Parking facilities Off-street commercial vehicle facilities for heavy vehicle usage. | Detailed design | Detailed design | N | N | N | Y | Y | In Progress | | CTP |
| B12 | The development is to be designed so that: (a) all vehicles are wholly contained on site before being required to stop; (b) adequate parking for heavy vehicles is provided on-site to accommodate any potential delays in schedule time; (c) all loading and unloading of materials is carried out on-site; and (d) site roads accommodate buses, bus infrastructure and cyclist use for employees. | Detailed design | Detailed design | N | N | N | Y | Y | In Progress | | CTP |
| B13 | The Applicant must undertake the following upgrades, in accordance with the specified timing requirements, as set out in Table 1. Refer to Tables spreadsheet | Detailed design | Detailed design | N | N | N | Y | Y | Compliant | | CTP |
| B14 | A Works Authorisation Deed(s) (WAD) with RMS is to be executed by the Applicant for the infrastructure listed in condition B13 prior to the issue of the first Occupation Certificate for warehousing. | Construction | Prior to issue of Construction Certificate | N | N | N | Y | Y | Not triggered | | CTP |
| B15 | Traffic Control Signal (TCS) plans must be drawn by a suitably qualified person and endorsed by a suitably qualified practitioner. The designs submitted to RMS must be in accordance with Austroads Guide to Road Design in association with relevant RMS supplements (available on www.rms.nsw.gov.au). | Detailed design | Detailed design | N | N | N | Y | Y | In Progress | | CTP |
| B16 | RMS fees for administration, plan checking, civil works inspections and project management must be paid by the Applicant prior to the commencement of works. The Applicant may be required to dedicate land for the maintenance of the traffic control lights. Further details will be included in the WAD process. | Detailed design | Detailed design | N | N | Y | Y | Y | In Progress | | CTP; CTAMP (MBK AVE) |
| B17 | The proposed road upgrade, road raising and widening works by the Applicant along Moorebank Avenue must be designed to meet RMS requirements, and endorsed by a suitably qualified person(s). The design requirements must be in accordance with Austroads guidelines and other Australian Codes of Practice. | Detailed design | Detailed design | N | N | N | Y | Y | In Progress | | CTP |
| B18 | The works associated with traffic lights and road upgrade works detailed in condition B13 are to be designed and delivered at no cost to TfNSW or RMS unless otherwise agreed by TfNSW and RMS. | Detailed design | Detailed design | N | N | N | Y | Y | In Progress | | CTP |
| B19 | The Applicant is responsible for all works required by public utility adjustment/relocation works necessitated by the road infrastructure upgrade works and as required by the various public utility authorities and/or their agents. | Construction | Construction | N | Y | Y | Y | Y | Compliant | CEMP: 8/06/2018 CTAMP:15/06/2018 | CTP; CEMP |
| B20 | All works/ regulatory signposting associated with the road infrastructure upgrades must be approved by RMS. | Construction | Construction | N | Y | Y | Y | Y | In Progress | CEMP: 8/06/2018 CTAMP:15/06/2018 | CTP; CEMP |
| B21 | The Applicant is to procure the dedication as public road under the Roads Act 1993 of part of the existing Moorebank Avenue (i.e. part of Lot 2 DP 1197707) and any associated land required for the road widening or upgrades between the southern boundary of the Defence Joint Logistics Unit site (Lot 3 DP 1197707) and Anzac Avenue. | Construction | Prior to issue of Construction Certificate | N | Y | Y | Y | Y | In Progress | 8/06/2018 | CTP |
| B22 | The Applicant is to procure the dedication as "temporary public road" under the Roads Act 1993 of the balance of the existing Moorebank Avenue (and any associated land required for the road widening or upgrades) that is owned by the Commonwealth and is not required to be dedicated under condition B21. | Construction | Prior to issue of Construction Certificate | N | Y | Y | Y | Y | Compliant | 8/06/2018 | CTP |
| B23 | The Moorebank Avenue road dedications required by conditions B21 and B22 must occur prior to the first Construction Certificate for any road works on Moorebank Avenue, unless otherwise agreed by the Secretary of Transport for NSW. | Construction | Prior to issue of Construction Certificate | N | Y | Y | Y | Y | Compliant | 8/06/2018 | CTP |
| B24 | The Applicant must pay all costs incurred by Council and/or RMS in relation to conditions B21 and B22 above. | Construction | Prior to issue of Construction Certificate | N | N | Y | Y | Y | Compliant | 8/06/2018 | CTP |
| B25 | The Applicant must ensure: (a) internal roads, driveways and parking (including grades, turn paths, sight distance requirements, aisle widths, aisle lengths and parking bay dimensions) associated with the development are constructed and maintained in accordance with the latest version of AS 2890.1:2004 Parking facilities Off-street car parking (Standards Australia, 2004) and AS 2890.2:2002 Parking facilities Off-street commercial vehicle facilities (Standards Australia, 2002); (b) the final configuration of the internal road network is established and available for use prior to occupation of the freight village or any warehousing; (c) the swept path of the longest vehicle entering and exiting the site, as well as manoeuvrability through the site, is in accordance with the relevant Austroads guidelines; (d) the development does not result in any vehicles queuing on the public road network; (e) heavy vehicles and bins associated with the development are not parked on local roads or footpaths in the vicinity of the site; (f) all vehicles are wholly contained on site before being required to stop; (g) all loading and unloading of materials is carried out on-site; (h) all trucks entering or leaving the site with loads have their loads covered and do not track dirt onto any public road; and (i) the proposed turning areas in the car park are kept clear of any obstacles, including parked cars, at all times. | Detailed design | Detailed design | N | N | N | Y | Y | In Progress | | CTP; OEMP |
| B26 | The Applicant must prepare an Operational Traffic and Access Management Plan to the satisfaction of the Secretary. The Plan is to be developed in consultation with the relevant Council, TfNSW and RMS. The Plan must be approved by the Secretary prior to the commencement of operation. The Plan must be prepared by a suitably qualified and experienced person(s), and must: (a) demonstrate how the development will be managed during operation to meet the requirements of this development consent; (b) detail numbers and frequency of truck movements, sizes of trucks, vehicle routes and hours of operation; (c) detail access arrangements for the site to ensure road and site safety, and demonstrate there will be no queuing on the road network; (d) detail measures to ensure turning areas and internal access roads are kept clear of any obstacles, including parked cars, at all times; (e) set out procedures for collecting the information required to prepare the Biannual Trip Origin and Destination Report required under condition B28; (f) incorporate the Workplace Travel Plan as required under condition B29; (g) include a driver's code of conduct that requires: (i) compliance with specified travelling speeds; (ii) drivers to adhere to specified transport routes including no access from Cambridge Avenue; and (iii) drivers to implement safe driving practices. (h) include a program to monitor the effectiveness of these measures. | Pre-operation | Prior to Operation | N | N | N | Y | Y | Not triggered | | OEMP |
| B27 | The Operational Traffic and Access Management Plan required by condition B26 must be implemented by the Applicant for the duration of operations | Pre-operation | Prior to Operation | N | N | N | Y | Y | Not triggered | | OEMP |
| B28 | The Applicant is to prepare a Biannual Trip Origin and Destination Report each six months following commencement of any operation (in a format agreed with TfNSW and RMS) that advises: (a) the number of actual and standard twenty foot equivalent shipping containers despatched and received during the period; (b) the number of days in the period that the truck gate was open for despatching trucks 24 hours a day, 7 days a week and detail any exceptions to this and advise actual hours of operation; (c) records of vehicle numbers accessing the site; and (d) representative vehicle origins and destinations, based on a cordon in the surrounding network. A framework for recording and reporting on the data required for the report, prepared to the satisfaction of TfNSW and RMS, is to be submitted to the Secretary three months prior to the commencement of operation. The report is to be submitted within one month of its preparation throughout operation of the project, starting six months from the commencement of operation, unless otherwise agreed by the Secretary, TfNSW and RMS. The cordon count at (d) above will: • apply to all classes of vehicles; and • cover the intermodal terminal, the warehousing facility and any other uses such as the freight village. | Pre-operation | Prior to Operation | N | N | N | Y | Y | Not triggered | | OEMP |

| CoC | Requirement | High Level Phases | Timing for Compliance | Works Area/Package (per Appendix I, Table 4-8 of RTS); Phase (per CoC A18) | | | | Secretary Approval Required? | Compliance Status | Date of Approval/ Compliance | Evidence |
|-----|--|-------------------|---|--|---|---|----------------------------|------------------------------|-------------------|------------------------------|--|
| | | | | Works Area/Package (per Appendix I, Table 4-8 of RTS); Phase (per CoC A18) | Construction Phase A (excl Moorebank Ave) (Phase B & C) | Construction Phase B (Moorebank Avenue Works) (Phase B & C) | Operation (Phase D, E & F) | | | | |
| B29 | Prior to issue of any Occupation Certificate, the Applicant must prepare a Workplace Travel Plan to the satisfaction of the Secretary. The Workplace Travel Plan must form part of the Operational Traffic and Access Management Plan required by condition C3, and must: (a) be prepared in consultation with TNSW; (b) outline facilities and measures to promote public transport usage, such as car share schemes and employee incentives; (c) describe pedestrian and bicycle connections and linkages to and from the site from Moorebank Avenue and within the site including between warehouses and the freight village; (d) describe end of trip facilities available on-site which are to include under cover bike storage, showers and change facilities - the layout, design and security of bicycle facilities must comply with the minimum requirements of Australian Standard AS 2890.3 – 1993 Parking Facilities Part 3: Bicycle Parking Facilities; and (e) include the results of negotiations with the relevant agencies/ authorities as required to facilitate the staged delivery of the public transport infrastructure including: (i) construction of a covered bus drop off/ pick up facility within the site to encourage the use of buses for employees; (ii) review and rationalisation of the locations of Route 901 bus stops in the vicinity of the site to match the proposed northern terminal entry location and enhance accessibility; (iii) peak period and SIMTA shift work responsive express buses to /from the site and Liverpool Station via Moorebank Avenue and Newbridge Roads with frequency dependent on the development of the site; (iv) peak period express buses to/ from the site and Holsworthy rail station via Anzac Road, Wattle Grove Drive and Heathcote Road with frequency dependent on the development of the site; (v) potential to extend the Route 901 bus through the site via the light vehicle road and increasing peak period bus service frequencies to better match the needs of existing and future employees of the locality with frequency dependent on the extent of development of the site; and (vi) changes to existing bus stop locations and the identification of new bus stop locations if required. | Operation | Prior to issue of occupation certificate | N | N | N | Y | Y | Not triggered | | OEMP |
| B30 | The Applicant must ensure that the Workplace Travel Plan is implemented for the life of the development. | Operation | Prior to issue of occupation certificate | N | N | N | Y | Y | Not triggered | | OEMP |
| B31 | The applicant must prepare a Concrete Batching Plant Management Plan to the satisfaction of the Secretary. The plan must be approved by the Secretary prior to the establishment of Concrete Batching Plant and form part of the CEMP required by condition C1. The Plan must be prepared by a suitably qualified and experienced person(s) and detail the establishment and operation of the Plant including: (a) demonstrate how the development will be managed during construction to meet the requirements of this development consent; (b) a description of the works proposed to be undertaken; (c) a description of the plant, equipment and materials to be used and/or stored on each site, including dangerous and hazardous goods; (d) a summary of the potential environmental impacts associated with the establishment and operation of the facility; (e) details of the mitigation, monitoring and management procedures specific to the plant that would be implemented to minimise environmental and amenity impacts during both site establishment and operation; (f) include a program to monitor the effectiveness of these measures; (g) details of how waste is to be managed in association with the operation of the Plant; (h) detail any licenses required to discharge waste from the plant; and (i) mechanisms for the monitoring, review and amendment of the Ancillary Facilities Management Plan. | Pre-construction | Prior to construction of Concrete Batching Plant | N | Y | Y | N | Y | Not triggered | | The approved CEMP (Rev 4) dated 5 April 2018, has considered the requirement for a Concrete Batching Plant (CBPMP) (Appendix F). The requirement for CBPMP has not yet been triggered. |
| B32 | A Site Specific Earthworks Specification must be prepared by a suitably qualified and experienced person(s) in accordance with the Geotechnical Interpretive Report prepared by Golder Associates, dated 11 November 2016. | Detailed design | Detailed design | N | N | N | Y | Y | In Progress | | CTP |
| B33 | Prior to construction of permanent built works, a geotechnical engineer must prepare a works-as-executed report detailing encountered geotechnical conditions and how residual geotechnical constraints can be accommodated within the structural designs for the development. The structural design must be confirmed or amended by the structural engineer based on the works-as-executed geotechnical report. | Pre-construction | Prior to construction of permanent built works | N | Y | Y | Y | Y | Not triggered | 8/06/2018 | CTP |
| B34 | Prior to early works, fill importation or any other surface disturbance, the Applicant must prepare a Soil and Water Management Plan (SWMP) to the satisfaction of the Secretary. The plan must form part of the CEMP required by condition C1 and must include: (a) measures to verify the properties of fill imported to the site (see condition (b)); (b) plans showing limits of clearing, filling and other earthworks and vegetation to be retained and protected; (c) plans showing temporary access points and haul roads within the site for fill stockpiling and placement; (d) plans showing the location of stockpiled fill and other materials and storage areas (see condition (c)); (e) an Erosion and Sediment Control Plan (see condition B40); (f) measures to minimise dust, erosion and prevent migration of soil off site and migration into constructed and natural drainage lines (see condition B39); (g) details on design and maintenance of temporary stormwater drainage infrastructure including sediment basins and temporary diversion channels around temporary work obstructions to allow low and normal flows to safely bypass the work areas and to separate clean and dirty water flows (see condition B39); (h) details of existing stormwater infrastructure to be retained, including upgrades to meet design criteria, and design and maintenance of proposed new infrastructure (see condition B40); (i) evidence that legal agreement has been obtained: (i) to discharge stormwater through adjacent sites; (ii) for any necessary upgrade works to be constructed; (iii) for undertaking maintenance activities; (iv) use of OSD basins on other sites, such as the MPW site, for this development; and (v) evidence that an easement has been obtained or is currently in place to discharge and detain water through adjacent sites; (j) evidence that a drainage easement is in place to discharge stormwater through the MPW site, and to provide OSD basins within the MPW site, for this development, and that drainage infrastructure within the MPW site to the Georges River has been repaired or upgraded to the satisfaction of the Secretary prior to completion of construction of the temporary MPE Stage 2 sediment basins. (k) confirmation that the stormwater drainage systems in adjacent sites are designed, or can be upgraded to accept flows from the MPE site, including provision of scour protection at discharge points; (l) demonstrate no impact on Anzac Creek flood levels or flood extents due to filling of the MPE site; (m) demonstrate no change to stormwater flows directly entering proposed biodiversity offset areas; (n) demonstrate no deterioration in the quality of stormwater discharged from the site into proposed biodiversity offset areas; and (o) demonstrate that stormwater leaving the site meets the design water flow and water quality criteria (see condition B44 water quality monitoring). | Pre-construction | Prior to commencement of Early works and fill importation | Y | Y | Y | Y | Y | Compliant | 8/06/2018 | The SWMP (Rev 6) - 7 June 2018 was approved by the DP&E on 8/06/2018 |
| B35 | The Applicant must ensure that only VENM or ENM, or other material approved in writing by EPA is brought onto the site. | Construction | Early works and fill importation | Y | Y | Y | Y | Y | Ongoing | 8/06/2018 | EW Spoil MP and Cspoil MP, superseded by Construction Spoil Management Plan (Rev 4) - 5 April 2018, approved by the DP&E on 8/06/2018 |
| B36 | Prior to commencement of importation of spoil, the Applicant must prepare a Spoil Management Plan to the satisfaction of the Secretary. The Spoil Management Plan must incorporate detailed information on the handling and transport of spoil, including stock pile management. The Spoil Management Plan is to be prepared separate to, but consistent with the CEMP required by conditions C1 and must: (a) be prepared by a suitably qualified and experienced person(s); (b) include: (i) a protocol for recording the volume, type and source of fill imported to site and vehicle registrations on a daily basis; (ii) quality assurance and quality control measures to ensure compliance with condition B36; (iii) a protocol for dealing with unexpected finds including material contamination; and (iv) independent auditing by a suitably qualified and experienced specialist. (c) be consistent with Volume 1 of Managing Urban Stormwater: Soils and Construction ('the Blue Book') (Landcom 2004) and include: (i) Details on and the location of fill sorting, crushing and stockpiling; (ii) Plans and details on the progressive formation of stockpiles, placement and stabilisation of placed fill; (iii) Stockpiles not to exceed 10m in height with stockpiles over 4m in height to be benched, with maximum of 1V:3H slopes; (iv) Monitoring of stockpile moisture content and stockpile watering; (v) Stabilisation of stockpiles if not worked on for more than 10 days; and (vi) Stabilisation of placed fill if construction does not commence within 10 days. | Pre-construction | Prior to commencement of importation of spoil | Y | Y | Y | Y | Y | Compliant | 8/06/2018 | The EWSWMP / Spoil Management Plan has been superseded by the Construction Spoil Management Plan (Rev 4) - 5 April 2018, approved by the DP&E on 8/06/2018 |
| B37 | The handling of spoil during construction of the development is to be conducted in accordance with the Spoil Management Plan | Construction | Early works and fill importation | Y | Y | Y | Y | Y | Ongoing | 8/06/2018 | EWSWMP / Spoil MP superseded by Construction Spoil Management Plan (Rev 4) - 5 April 2018, approved by the DP&E on 8/06/2018 |
| B38 | Permanent fill batters to adjacent lands to be a maximum of 1V:4H and details to be provided on methods of slope stabilisation. | Detailed design | Detailed design | Y | Y | Y | Y | Y | Ongoing | | CTP / UDLP |

| CoC | Requirement | High Level Phases | Timing for Compliance | Works Area/Package (per Appendix I, Table 4-8 of RTS); Phase (per CoC A18) | | | | Secretary Approval Required? | Compliance Status | Date of Approval/ Compliance | Evidence |
|-----|---|-------------------|---|--|---|---|----------------------------|------------------------------|-------------------|------------------------------|--|
| | | | | Works Area/Package (per Appendix I, Table 4-8 of RTS); Phase (per CoC A18) | Construction Phase A (excl Moorebank Ave) (Phase B & C) | Construction Phase B (Moorebank Avenue Works) (Phase B & C) | Operation (Phase D, E & F) | | | | |
| B39 | Prior to commencement of early works and fill importation an Erosion and Sediment Control Plan must: (a) be prepared by a suitably qualified person; (b) be prepared in accordance with Volume 1 of Managing Urban Stormwater: Soils and Construction ('the Blue Book') (Landcom 2004), Managing Urban Stormwater: Soils and Construction – Installation of Services, Volume 2A (OEH 2008) and Managing Urban Stormwater: Soils and Construction – Main Road Construction, Volume 2D (OEH 2008). The plan must consider likely stages of the works and provide for appropriate control of sediment and erosion for each stage. The plan must show: (i) location and extent of all necessary sediment and erosion control measures for the site; (ii) catchment plan; (iii) sediment basin(s) locations including details showing how runoff from the entire site will be directed to the sediment basin(s); (iv) all relevant details and calculations of the sediment basins including sizes, depths, flocculation, outlet design, all relevant sections, pump out systems, and depths; (v) all details of basement and other excavation pump out and dewatering treatment systems including flocculation and any proposed discharge from the site from dewatering and pump out systems; (vi) identification and management of any stormwater run-on to the site from adjacent sites; (vii) location of any temporary stockpiles (soil, spoil, top soil or otherwise) and accompanying sediment and erosion control measures; (viii) location and details of all vehicle wash down bays and associated erosion and sediment control measures such as earthen bunds; and (ix) a daily and weekly site inspection checklist consistent with IECA Best Practice Erosion and Sediment Control documents. (c) be implemented prior to commencement of early works, fill importation and construction (and any substages of these phases) and be updated as relevant to changing early works; fill importation, stockpiling and placement, and construction activities. | Pre-construction | Prior to commencement of Early works and fill importation | Y | Y | Y | Y | Y | Compliant | 8/06/2018 | The Construction Erosion and Sediment Control Plan (CERSEDP) (Rev 4) - 11 May 2018, included as Appendix A of CSWMP (Rev 6) - 7 June 2018, which was approved by the DP&E on 8/06/2018. |
| B40 | Prior to commencement of early works and fill importation, an amended Stormwater Management Plan must be submitted and approved by the Secretary. The plans must be prepared by a suitably qualified person, and independently reviewed, to ensure it meets the following criteria for: (a) Drainage: (i) convey flows from low order events (up to and including the 10% AEP event from the main part of the site within the formal drainage system, with flows from rarer events (up to the 1% AEP event) conveyed in controlled overland flow paths; (ii) show the location and width of controlled overland flow paths; and (iii) provide levels to AHD confirming building floor levels are a minimum of 150 mm above the maximum design flow path levels. (b) Water Sensitive Urban Design: (i) incorporate water sensitive urban design principles, be generally in accordance with relevant Council policies, plans and specifications (ii) ensure that adequate overland flow paths have been provided in the event of stormwater system blockages and flows in excess of the 1% ARI rainfall event; (iii) ensure on site detention basins are visually unobtrusive and ensure public safety; (iv) ensure rainwater harvesting is provided for each warehouse; (v) ensure adequate site area has been provided for stormwater treatment; (vi) ensure design of stormwater treatment systems minimises the risk of failure; and (vii) develop concept options for how 20% of the average annual volume of stormwater from the site can be reused via rainwater capture and reuse for activities including but not limited to: • irrigation, • all internal non-potable uses, • washdown, • cooling towers, • heating, ventilation, and air conditioning, and • ground source heat exchange. The Applicant is to brief the Department on how these initiatives will be implemented prior to the completion of the Stormwater Management Plan. (c) Water quantity: (i) on site detention is to be provided to attenuate peak flows from the development such that both the: -1 in 1 year ARI event post development peak discharge rate is equivalent to the pre-development (un-developed catchment) 1 in 1 year ARI event -1 in 100 year ARI event post development peak discharge rate is equivalent to the pre-development (un-developed catchment) 1 in 100 year ARI event; (ii) no new drainage infrastructure work within the Defence Joint Logistics Unit (DJLU) site; (iii) all on site detention basins to have maximum batter slopes of 1V:4H or, for works immediately adjacent to the Moorebank Avenue upgrade, an alternate slope gradient agreed to by RMS; (iv) siting and design of on site detention basins to eliminate/ minimise excavation within the southern ordinance burial pits; and (v) maintenance access to be provided to each on site detention basin. (d) Connection to natural creeklines: (i) on site detention basin outlets to natural drainage lines must be constructed of natural materials to facilitate natural geomorphic processes and to include vegetation as necessary (gabion baskets and gabion mattresses are not acceptable). | Pre-construction | Prior to commencement of Early works and fill importation | Y | Y | Y | Y | Y | Compliant | 2/07/2018 | The Stormwater Management Plan (SMP) will be phased. SMP-W1P (Rev 2) - 28 June 2018 is for the construction and operation of Warehouse 1 Precinct and demolition and completion of bulk earthworks for the remainder of the site. The SMP-W1P (Rev 2) - 28 June 2018, was approved by DP&E 2/07/2018 |
| B41 | Notwithstanding condition B40, the Stormwater Management Plan does not require the Secretary to approve drainage works that would be designed, approved by RMS, and delivered, in accordance with condition B13. However, the Stormwater Management Plan must: (a) include confirmation that any such works are proposed to be designed and delivered in accordance with condition B13; and (b) incorporate, and be designed in consideration of, preliminary principles for that road drainage. | Pre-construction | Prior to commencement of Early works and fill importation | Y | Y | Y | Y | N | Compliant | 2/07/2018 | Addressed in Section 1.3.1 in SMP-W1P (Rev 2) - 28 June 2018, approved by the DP&E on 2/07/2018. Full details of the design will be provided in the subsequent staging of the plan. |
| B42 | The amended numerical models are to be submitted to the Secretary with the Stormwater Management Plan | Pre-construction | Prior to commencement of Early works and fill importation | Y | Y | Y | Y | Y | Compliant | 28/06/2018 | The numerical models were submitted with SWP-W1P (Rev 2) - 28 June 2018, approved by the DP&E on 2/07/2018. |
| B43 | A Stormwater Monitoring Program must be prepared in consultation with Council and OEHS prior to operation and must be implemented for 5 years following completion of construction to monitor performance of the stormwater treatment system. The Stormwater Monitoring Program must form part of the Biodiversity Monitoring Strategy required by condition B105, prepared with reference to Using the ANZECC Guidelines and Water Quality Objectives in NSW (DEC, 2006). | Pre-operation | Prior to Operation | N | N | N | Y | Y | Compliant | | CTP |
| B44 | The Stormwater Monitoring Program must: (a) assess water quality and quantity performance for construction discharges and ongoing stormwater discharges from the development to ensure protection of the desired ecological values of Anzac Creek; and (b) include sampling locations and the frequency of sampling including wet weather sampling. | Pre-operation | Prior to Operation | N | Y | Y | Y | Y | Compliant | | CTP CSWMP |
| B45 | Conversion of any construction stage sediment and erosion control measures into permanent stormwater quality treatment elements must only occur once the civil works (roads and drainage) have been completed for the site to ensure the treatment measure is not compromised by sediment runoff. | Pre-operation | Prior to Operation | N | Y | Y | Y | Y | Compliant | | CSWMP |
| B46 | All permanent stormwater infrastructure must be constructed in accordance with the Stormwater Management Plan approved by the Secretary and properly maintained on an ongoing basis. | Construction | Construction | N | N | N | Y | Y | Ongoing | CSWMP: 3/07/2018 | CTP/ OEMP |
| B47 | Written signoff from the design engineer(s) responsible for the construction drawings is to be provided to the Secretary certifying that the system has been constructed in accordance with the construction drawings or, where modified, this has not adversely affected the performance of the system. | Detailed design | Detailed design | N | N | N | Y | Y | Compliant | | CTP |
| B48 | LEFT BLANK (SSD 7628) | NA | N/A | N/A | N/A | N/A | N/A | N/A | N/A | N/A | N/A |
| B49 | Prior to operation, the Applicant must prepare a Stormwater Infrastructure Operation and Maintenance Plan to manage the operation and maintenance of stormwater infrastructure on-site and off-site, to the satisfaction of the Secretary. The plan must form part of the OEMP required under condition C3 and must be implemented for the life of the assets and include: (a) the entity responsible for management and maintenance of the assets, including evidence that a maintenance contract is in place with a reputable and experienced maintenance contractor; (b) quarterly inspections, and inspections after major rainfall events; (c) schedule for routine checking, cleaning and servicing of all devices/ systems in accordance with the manufacturer's and/or designer's recommendations; (d) records of all maintenance activities undertaken; (e) quarterly maintenance reports, detailing the results of quarterly inspections, inspections after major rainfall events, and maintenance activities; (f) results of water quality monitoring; (g) investigation, management and mitigation of water quality target exceedances; (h) annual independent auditing; and (i) provision for submission of the quarterly maintenance reports and annual independent audit reports to the Secretary, including the results of inspections, management and maintenance actions and water quality monitoring. | Pre-operation | Prior to Operation | N | N | N | Y | Y | Not triggered | | OEMP |
| B50 | Assets to be managed under the Stormwater Infrastructure Operation and Maintenance Plan must include the channel through the MPW site to the Georges River unless the maintenance of this infrastructure is included in an operational environmental management plan approved by the Secretary for the MPW site. | Pre-operation | Prior to Operation | N | N | N | Y | Y | Not triggered | | OEMP |
| B51 | The annual independent audit must be undertaken by a suitably qualified WSUD professional. The audit is to verify the condition of the treatment system(s), verify and document that the system(s) is working as intended, verify the system(s) has been cleaned adequately, verify there is no excessive build-up of material in the system(s) and identify any issues with the treatment system(s) which require rectification for the system(s) to adequately perform its intended function. | Operation | Operation | N | N | N | Y | Y | Not triggered | | OEMP |

| CoC | Requirement | High Level Phases | Timing for Compliance | Works Area/Package (per Appendix I, Table 4-8 of RTS); Phase (per CoC A18) | | | | Secretary Approval Required? | Compliance Status | Date of Approval/ Compliance | Evidence |
|-----|---|-------------------|---|--|---|---|----------------------------|------------------------------|-------------------|--------------------------------------|--|
| | | | | Works Area/Package (per Appendix I, Table 4-8 of RTS); Phase (per CoC A18) | Construction Phase A (excl Moorebank Ave) (Phase B & C) | Construction Phase B (Moorebank Avenue Works) (Phase B & C) | Operation (Phase D, E & F) | | | | |
| B52 | Before the commencement of construction, the Applicant must prepare a Flood Emergency Response Plan to the satisfaction of the Secretary. The Plan must form part of the CEMP and OEMP required by conditions C1 and C3 and must: (a) be prepared by a suitably qualified and experienced person(s) whose appointment has been endorsed by the Secretary; (c) address the provisions of the Floodplain Risk Management Guideline (OEH, 2007) (as may be updated or replaced from time to time); (d) include details of: • the flood emergency responses for both construction and operation phases of the development; • predicted flood levels; • flood warning time and flood notification; • assembly points and evacuation routes; • evacuation and refuge protocols; and • awareness training for employees and contractors. | Pre-construction | Prior to commencement of Construction | N | Y | Y | Y | Y | Compliant | 1/06/2018 | FERP (Rev 5) - 16 April 2018, was approved by the DP&E on 1/06/2018. |
| B53 | The Applicant must: (a) not commence construction until the Flood Emergency Response Plan required by condition B51 is approved by the Secretary; and (e) implement the most recent version of the Flood Emergency Response Plan approved by the Secretary for the duration of the development. | Pre-construction | Prior to commencement of Construction | N | Y | Y | Y | Y | Compliant | 1/06/2018 | FERP (Rev 5) - 16 April 2018, was approved by the DP&E on 1/06/2018. |
| B54 | Best practice reactive and proactive management measures must be implemented to minimise dust generated during all works authorised by this consent. | All | Throughout Construction and Operation | Y | Y | Y | Y | Y | Compliant | 1/06/2018 | The EWEMP / EWAQMP was superseded by the CAQMP (Rev 4) - 11 May 2018, approved by DP&E 1/06/2018 |
| B55 | Deposited dust must not exceed an increase of 2g/m2/month or maximum of 4g/m2/month at the closest off site sensitive receiver. | All | Throughout Construction and Operation | Y | Y | Y | Y | Y | Compliant | 1/06/2018 | The EWEMP / EWAQMP was superseded by the CAQMP (Rev 4) - 11 May 2018, approved by DP&E 1/06/2018 |
| B56 | During construction: (a) fill importation must not exceed 22,000m3 per day; (b) exposed areas and stockpiles must be watered regularly to minimise dust emissions; (c) water carts must be used to control dust emissions from vehicles travelling on unpaved surfaces, and graders and dozers pushing fill material; (d) grader and bulldozer travel routes and the fill material being handled must be suitably moist; (e) water must be used as appropriate to maintain moisture in the fill material being bulldozed, such that dust emissions would be halved relative to not applying the water; (f) water may be applied prior to fill being delivered to site, provided that the same effect is achieved as in (e) above; (g) all trucks entering or leaving the site with loads must have their loads covered; (h) trucks associated with the development must not track dirt onto public roads; (i) public roads used by trucks associated with the development must be kept clean; and (j) land stabilisation works must be carried out progressively on site to minimise exposed surfaces. | Construction | Construction | N | Y | Y | Y | Y | Ongoing | 1/06/2018 | The EWEMP / EWAQMP was superseded by the CAQMP (Rev 4) - 11 May 2018, approved by DP&E 1/06/2018 |
| B57 | The Applicant must prepare a Construction Air Quality Management Plan (AQMP) to the satisfaction of the Secretary. The AQMP must be prepared by a suitably qualified and experienced person(s). The Construction AQMP must form part of the CEMP required by condition C1. The AQMP must include: (a) a Construction Air Quality Monitoring Program ; (b) identification of sources (including stockpiles and open work areas) and quantify airborne pollutants; (c) best practice reactive and proactive control measures that will be implemented for each emission source including measures to prevent the emission of visible dust from the site as listed in condition B55; (d) provisions for the implementation of additional mitigation measures in response to issues identified during monitoring and reporting; (e) for all emission sources at the site: (i) key performance indicator(s); (ii) monitoring method(s); (iii) location, frequency and duration of monitoring; (iv) record keeping; (v) complaints register; (vi) response procedures; and (vii) compliance monitoring. | Pre-construction | Prior to commencement of Early works and fill importation | Y | Y | Y | Y | Y | Compliant | 1/06/2018 | The EWEMP / EWAQMP was superseded by the CAQMP (Rev 4) - 11 May 2018, approved by DP&E 1/06/2018 |
| B58 | Air quality monitoring must be undertaken during early works, fill importation and construction | Construction | Early works and fill importation | Y | Y | Y | Y | Y | Ongoing | 1/06/2018 | The EWEMP / EWAQMP was superseded by the CAQMP (Rev 4) - 11 May 2018, approved by DP&E 1/06/2018 |
| B59 | The Applicant must prepare an Operational AQMP to the satisfaction of the Secretary for the entire precinct (MPE + MPW), unless this has been prepared and approved under an approval for the MPW site. The AQMP must be prepared by a suitably qualified and experienced person(s) and must form part of the OEMP required by condition C3. The AQMP must include: (a) identification of sources and quantify airborne pollutants; (b) best practice reactive and proactive control measures that will be implemented for each emission source; (c) provisions for the implementation of additional mitigation measures in response to issues identified during monitoring and reporting; (d) for all emission sources associated with site operations: (i) key performance indicator(s); (ii) monitoring method(s); (iii) location, frequency and duration of monitoring; (iv) record keeping; (v) complaints register; (vi) response procedures; and (vii) compliance monitoring. | Pre-operation | Prior to Operation | N | N | N | Y | Y | Not triggered | | OAQMP |
| B60 | The Applicant must ensure the development does not cause or permit the emission of any offensive odour (as defined in the POEO Act). | All | Throughout Construction and Operation | Y | Y | Y | Y | Y | Ongoing | CEMP: 8/06/2018 OEMP:TBC | CEMP/ OEMP |
| B61 | Equipment must be installed and operated in accordance with best practice to ensure that the development complies with all load limits, air quality criteria, air emission limits and air quality monitoring requirements as specified under this consent. | All | Throughout Construction and Operation | N | N | N | Y | Y | Ongoing | CEMP: 8/06/2018 CAQMP: 1/06/2018 | CEMP/ CAQMP |
| B62 | Prior to early works, the Applicant must undertake noise monitoring in accordance with INP to verify RBLs for the closest sensitive receivers. | Pre-construction | Prior to commencement of Early works and fill importation | Y | N | N | N | Y | Compliant | 18/12/2017 | Noise monitoring was undertaken from 05/12/2017 to 18/12/17 |
| B63 | Prior to early works and fill importation, the Applicant must submit a Noise Monitoring Report detailing the results of background noise monitoring, any resulting adjustment of NMLs for the development and any additional noise mitigation measures to be included in the CEMP required under condition C1. | Pre-construction | Prior to commencement of Early works and fill importation | Y | N | N | N | Y | Compliant | 20/02/2018 | The Noise Monitoring Report submitted 06/02/2018 DP&E acknowledged receipt 20/02/2018 |
| B64 | Continuous noise monitoring at sensitive receivers must be undertaken during early works, fill importation, construction and for at least 12 months following occupation of the entire site. | All | Throughout Construction and Operation | Y | Y | Y | Y | Y | Ongoing | CEMP: 8/06/2018 CVNMP: 15/06/2018 | CEMP/ CVNMP |
| B65 | The construction hours detailed in Table 2 must be complied with, except where they may be undertaken under condition B65. Refer to Table 2 | Construction | Construction | Y | Y | Y | Y | Y | Ongoing | 15/06/2018 | CNVMP (Rev 5) - 8 June 2018, approved by DP&E on 15/06/2018 |
| B66 | Except as permitted by an EPL, activities resulting in high noise impact (including impulsive or tonal noise emissions) must only be undertaken: (a) between the hours of 8:00 am to 5:00 pm Monday to Friday; (b) between the hours of 8:00 am to 1:00 pm Saturday; and (c) in continuous blocks not exceeding three hours each with a minimum respite from those activities and works of not less than one hour between each block. Note: For the purposes of this condition, 'continuous' includes any period during which there is less than a one hour respite between ceasing and recommencing any of the work that is the subject of this condition. | Construction | Construction | Y | Y | Y | Y | Y | Ongoing | 15/06/2018 | CNVMP (Rev 5) - 8 June 2018, approved by DP&E on 15/06/2018 |
| B67 | Works may be undertaken outside the hours detailed in Table 2 in the following circumstances: (a) for the delivery or dispatch of materials as requested by the NSW Police Force or other public authorities for safety reasons; (b) where it is required in an emergency to avoid the loss of lives, property and/or to prevent environmental harm; (c) where different construction hours are permitted or required under an EPL in force in respect of construction, in which case these construction hours must be complied with; (d) where they are undertaken in accordance with an Out-Of-Hours Work Protocol detailing the assessment, management and monitoring of noise as part of the Construction Noise and Vibration Management Plan. | Construction | Construction | N | Y | Y | Y | Y | Compliant | 15/06/2018 | Extended Hours Work (EHW) Plan (Appendix B of CNVMP) |
| B68 | The Applicant must prepare an Out-Of-Hours Work Protocol for any work undertaken outside the hours specified in condition B64 or outside the circumstances specified under condition B66. An Out-Of-Hours Work Protocol must provide for the assessment, management and monitoring of out of hours work noise including: (a) where works are shown to be inaudible at the nearest sensitive receivers and vibration levels do not exceed those stipulated by Table 2.2 and Table 2.4 of Assessing Vibration: a technical guideline (DEC, 2006); (b) where a negotiated agreement has been arranged with affected receivers; (c) where noise can be shown to satisfy the noise management levels specified in the Interim Construction Noise Guideline (ICNG, DECC, 2009) at non-residential land uses; or (d) where works are undertaken as part of an Extended Hours Work Plan approved as part of the Out-Of-Hours Work Protocol. | Pre-construction | Prior to commencement of Early works and fill importation | N | Y | Y | Y | Y | Compliant | 15/06/2018 | The Out of hours protocol is included in Appendix A of CNVMP (Rev 5) - 8 June 2018, approved by DP&E on 15/06/2018 |

| CoC | Requirement | High Level Phases | Timing for Compliance | Works Area/Package (per Appendix I, Table 4-8 of RTS); Phase (per CoC A18) | | | | Secretary Approval Required? | Compliance Status | Date of Approval/ Compliance | Evidence |
|-----|--|-------------------|---|--|---|---|----------------------------|------------------------------|-------------------|--------------------------------------|--|
| | | | | Works Area/Package (per Appendix I, Table 4-8 of RTS); Phase (per CoC A18) | Construction Phase A (excl Moorebank Ave) (Phase B & C) | Construction Phase B (Moorebank Avenue Works) (Phase B & C) | Operation (Phase D, E & F) | | | | |
| B69 | An Extended Hours Work Plan will be prepared for any construction undertaken during the extended hours detailed in Table 3 as required by condition B67(d). The Extended Hours Work Plan must provide for: (a) a three month assessment period, commencing at the start of extended hours construction works; (b) implementation of the Construction Noise and Vibration Management Plan; (c) noise monitoring at a representative number of sensitive receivers (including closest and furthest) to confirm the predicted noise levels; (d) targeted consultation with the noise affected sensitive receivers; (e) notification of the relevant Council, local residents and other affected stakeholders and sensitive receivers of the timing and duration at least 48 hours prior to the commencement of the works. (f) construction work timeframes and methods for investigation of noise complaints; (g) submission of monthly complaints reports to the Department for the life of extended hours activities; (h) continual refinement of mitigation measures based on consultation with the noise affected sensitive receivers; (i) implementation of work practices set out in section 5.2 of the ICNG; (j) a final summary report submitted to the Secretary at the end of the assessment period in subcondition (a), detailing the outcomes of the assessment period, the resolution of complaints during the assessment period, and demonstrate the acceptability of works outside standard hours. | Construction | Construction | N | Y | Y | Y | Y | Compliant | 1/06/2018 | Extended Hours Work (EHW) Plan (Appendix B of CNVMP) |
| B70 | The Applicant must comply with all written directions of the Secretary arising from the review of the final summary report required under condition B68. | Construction | Construction | Y | Y | Y | Y | Y | Compliant | 15/06/2018 | CNVMP (Rev 5) - 8 June 2018, approved by DP&E on 15/06/2018 |
| B71 | Construction must be carried out in accordance with the construction noise management levels and requirements detailed in the <i>INCG</i> (DECC, 2009). | Construction | Construction | N | Y | Y | Y | Y | Ongoing | 15/06/2018 | CNVMP (Rev 5) - 8 June 2018, approved by DP&E on 15/06/2018 |
| B72 | All reasonable and feasible noise mitigation measures must be implemented in addition to the management and mitigation measures in APPENDIX B with the aim of achieving the following construction Noise Management Levels (NMLs) and vibration criteria: (a) construction noise management levels established using the <i>INCG</i> (DECC 2009); (b) vibration criteria established using the <i>Assessing Vibration: a Technical Guide</i> (DECC 2006) (for human exposure); and (c) the vibration limits set out in the German Standard DIN 4150-3: Structural Vibration effects of vibration on structures (for structural damage). | Construction | Construction | N | Y | Y | Y | Y | Ongoing | 15/06/2018 | CNVMP (Rev 5) - 8 June 2018, approved by DP&E on 15/06/2018 |
| B73 | Any construction activities identified as exceeding the construction noise management levels and/or vibration criteria must be managed in accordance with the Construction Noise and Vibration Management Plan (CNVMP) required by condition B77. All feasible and reasonable noise mitigation and management measures must be implemented and any activities that could exceed the construction NMLs must be identified and managed in accordance with the CNVMP. Note: The <i>INCG</i> identifies 'particularly annoying' activities that require the addition of 5dB(A) to the predicted level before comparing to the construction NML. | Construction | Construction | N | Y | Y | Y | Y | Ongoing | 15/06/2018 | CNVMP (Rev 5) - 8 June 2018, approved by DP&E on 15/06/2018 |
| B74 | Where feasible and reasonable, construction traffic movements on public roads should aim to limit any increase in existing road traffic noise levels to no more than 2 dB LAeq,period, where 'period' is defined in the EPA's Road Noise Policy (RNP) for both day and night. | Construction | Construction | N | Y | Y | Y | Y | Ongoing | 15/06/2018 | CNVMP (Rev 5) - 8 June 2018, approved by DP&E on 15/06/2018 |
| B75 | The Applicant is to ensure that construction contractor's vehicles operate so as to minimise impacts. Measures that could be used include: (a) toolbox talks; (b) contracts that include provisions to deal with unsatisfactory noise performance for the vehicle and/or the operator; and (c) specifying non-tonal movement alarms in place of reversing beepers or alternatives such as reversing cameras and proximity alarms, or a combination of these, where tonal alarms are not mandated by legislation. | Construction | Construction | Y | Y | Y | Y | Y | Ongoing | 15/06/2018 | CNVMP (Rev 5) - 8 June 2018, approved by DP&E on 15/06/2018 |
| B76 | Use of compression brakes for construction vehicles associated with the project that are on site or on nearby roads is not permitted (e.g. Anzac Road). | Construction | Construction | Y | Y | Y | Y | Y | Ongoing | CTAMP: 15/06/2018 CNVMP:1/06/2018 | CNVMP (Rev 5) - 8 June 2018, approved by DP&E on 15/06/2018 CTAMP - Phase A (Rev 9) 15 June 2018 approved by the DP&E on 15/06/2018 |
| B77 | A Construction Noise and Vibration Management Plan (CNVMP) must be prepared for the development to the satisfaction of the Secretary. The plan must form part of the CEMP required by C1 and detail how construction noise and vibration impacts will be minimised and managed. The Plan must be consistent with the guidelines contained in the <i>ICNG</i> (DECC, 2009). The plan must be developed in consultation with the EPA and include: (a) identification of the work areas, site compounds and access points; (b) identification of the type and number of plant and equipment expected on site at the same time; (c) identification of sensitive receivers (including heritage structures if relevant) and relevant construction noise and vibration goals applicable to the project as stipulated in condition B70; (d) details of construction activities and an indicative schedule for construction works, including the identification of key noise and/or vibration generating construction activities (based on representative construction scenarios) that have the potential to generate noise and/or vibration impacts on surrounding sensitive receivers, particularly residential areas; (e) an Out-of-hours Work Protocol as referenced in condition B67 for the assessment, management and approval of works outside standard construction hours, for the Secretary's approval. The Out-of-hours Work Protocol must: (i) detail assessment of out-of-hours works against the relevant noise and vibration criteria; (ii) provide detailed mitigation measures for any residual impacts (that is, additional to general mitigation measures), including extent of at-receiver treatments; (iii) include proposed notification arrangements; and (iv) include an Extended Hours Work Plan as required by condition B68. (f) identification of feasible and reasonable measures to be implemented to minimise and manage construction noise impacts, including, but not limited to, acoustic enclosures, erection of noise walls (hoardings), respite periods; (g) management of the number of trucks accessing the site; (h) a truck driver protocol addressing designated routes, acceptable delivery hours, speed limits on site, no engine braking in the vicinity or on site, no extended periods of engine idling, avoiding queuing in or around the site and limiting the need for reversing on site; (i) identification of feasible and reasonable procedures and mitigation measures to ensure relevant vibration criteria are achieved, including applicable buffer distances for vibration intensive works, use of low vibration generating equipment/ vibration dampeners or alternative construction methodology, and pre- and post- construction dilapidation surveys of sensitive structures where vibration is likely to result in damage to buildings and structures (including surveys being undertaken immediately following a monitored exceedance of the criteria); (j) a description of how the effectiveness of mitigation and management measures would be monitored during the proposed works, clearly indicating how often this monitoring would be conducted, the locations where monitoring would take place, how the results of this monitoring would be recorded and reported, and, if any exceedance is detected, how any non-compliance would be rectified; (k) noise and vibration monitoring procedures (routine and complaints triggered monitoring); (l) a community consultation and complaints handling procedure; and (m) mechanisms for the monitoring, review and amendment of this plan. | Pre-construction | Prior to commencement of Construction | N | Y | Y | Y | Y | Compliant | 15/06/2018 | CNVMP (Rev 5) - 8 June 2018, approved by DP&E on 15/06/2018. |
| B78 | Blasting is not permitted on the site | Construction | Construction | Y | Y | Y | Y | Y | Compliant | CEMP: 8/06/2018 CNVMP:1/06/2018 | CEMP; CNVMP |
| B79 | The permitted hours of warehouse and distribution operation are detailed in Table 4 . | Operation | Operation | N | N | N | Y | Y | Not triggered | | OEMP |
| B80 | Noise generated by operation of the development inclusive of MPE Stage 1 operations must not exceed the noise limits in Table 5 . | Operation | Operation | N | N | N | Y | Y | Not triggered | | OEMP |
| B81 | The Applicant must prepare a Review of Sleep Disturbance Impacts based on detailed design, including: (a) an assessment of how often noise events occur, the time of day they occur and whether there are any times of day when there is a clear change in the noise environment; (b) confirm the operational LAmax predictions of the final design; and (c) consider appropriate noise mitigation measures where required. | Construction | Within 6 months commencement of construction | N | Y | Y | Y | Y | Compliant | 8/06/2018 | CTP |
| B82 | The Review of Sleep Disturbance Impacts must be prepared in consultation with the EPA and to the satisfaction of the Secretary and must be submitted to the Secretary within six months of commencement of construction, unless otherwise agreed by the Secretary. | Construction | Within 6 months commencement of construction | N | Y | Y | Y | Y | Compliant | 8/06/2018 | CTP |
| B83 | An Operational Noise Management Plan must be submitted to the Secretary for approval and form part of the OEMP required under condition C3. The report must be prepared by a suitably qualified and experienced person(s) and include: (a) an outline of management actions to be taken to address any potential non-compliances with the limits specified in Table 5; (b) a description of contingency measures to be implemented in the event management actions do not reduce noise levels to a compliant level; and (c) identification of additional feasible and reasonable measures to those proposed in the documents specified under condition A2, that would be implemented with the objective of meeting the criteria outlined in the NSW RNP (EPA, 2011), when these measures would be implemented and how their effectiveness would be measured and reported to the Secretary and the EPA. | Pre-operation | Prior to Operation | N | N | N | Y | Y | Not triggered | | OEMP |
| B84 | Prior to construction of the freight village and each warehouse, the Applicant must submit to the Secretary a Noise Assessment for Mechanical Plant and other noisy equipment to demonstrate that plant has been selected to meet the overall operational noise limits specified in Table 5. | Pre-construction | Prior to construction of the freight village and each warehouse | N | Y | N | Y | Y | Compliant | 17/05/2018 | ONVMP - Acoustic Logic letter dated 14/05/2018 submitted to DPE 17/05/2018 for the <i>Target Logistics Centre</i> |

| CoC | Requirement | High Level Phases | Timing for Compliance | Works Area/Package (per Appendix I, Table 4-8 of RTS); Phase (per CoC A18) | | | | Secretary Approval Required? | Compliance Status | Date of Approval/ Compliance | Evidence |
|------|---|-------------------|--|--|---|---|----------------------------|------------------------------|-------------------|------------------------------|--|
| | | | | Works Area/Package (per Appendix I, Table 4-8 of RTS); Phase (per CoC A18) | Construction Phase A (excl Moorebank Ave) (Phase B & C) | Construction Phase B (Moorebank Avenue Works) (Phase B & C) | Operation (Phase D, E & F) | | | | |
| B85 | The Applicant must carry out noise monitoring of mechanical plant and other noisy equipment for a minimum period of one week where valid data is collected following occupation of each warehouse. The monitoring program must be carried out by a suitably qualified and experienced person(s) and a Monitoring Report for Mechanical Plant must be submitted to the Secretary within two months of occupation or each tenancy to verify predicted mechanical plant and equipment noise levels. | Operation | Occupation | N | N | N | Y | Y | Not triggered | | OEMP / ONVMP |
| B86 | Within 12 months of occupation of the first warehouse, 50% occupation of the site and 100% occupation of the site, or as otherwise agreed by the Secretary, the Applicant must undertake operational noise monitoring to compare actual noise performance of the project against predicted noise performance, and prepare an Operational Noise Report to document this monitoring. The Report must include, but not necessarily be limited to: a) noise monitoring to assess compliance with the predicted operational noise levels and the noise limits specified in Table 5; b) a review of the operational noise levels in terms of criteria and noise goals established in the NSW RNP (EPA, 2011); c) sleep disturbance impacts compared to those determined in documents specified under condition A2; d) impacts associated with annoying characteristics such as prominent tonal components, impulsiveness, intermittency, irregularity and dominant low-frequency content; e) methodology, location and frequency of noise monitoring undertaken, including monitoring sites at which project noise levels are ascertained, with specific reference to locations indicative of impacts on sensitive receivers; f) details of any complaints and enquiries received in relation to operational noise generated by the project between the date of commencement of operation and the date the report was prepared; g) any required recalibrations of the noise model taking into consideration factors such as actual traffic numbers and heavy vehicle proportions; and h) an assessment of the performance and effectiveness of applied noise mitigation measures together with a review and if necessary, reassessment of all feasible and reasonable mitigation measures. | Operation | Within 12 months of occupation of the first warehouse | N | N | N | Y | Y | Not triggered | | OEMP / ONVMP |
| B87 | The Applicant must provide the Secretary and the EPA with a copy of the Operational Noise Report within 60 days of completing the operational noise monitoring referred to in (a) above or as otherwise agreed by the Secretary. | Operation | Within 60 days of completion of operational noise monitoring | N | N | N | Y | Y | Not triggered | | CTP |
| B88 | To ensure the operational noise impacts are appropriately managed, the following measures apply: a) use of best practice plant; and b) preparation of a risk assessment to determine if non-tonal reversing alarms can be fitted as a condition of site entry. Alternatively, site design may include traffic flow that does not require or precludes reversing of vehicles. | Operation | Operation | N | N | N | Y | Y | Not triggered | | CTP / Operational Noise Report Detailed Design |
| B89 | For the duration of operation heavy road freight vehicles are not permitted to use Moorebank Avenue south of the East Hills Railway corridor. A main gate monitoring system (e.g. CCTV) must be installed to identify heavy vehicles turning left from the terminal site onto Moorebank Avenue, or turning right from Moorebank Avenue to the terminal site. The Secretary may at any time request the Applicant to provide a heavy vehicle monitoring report for the prior 12 month period. | Operation | Operation | N | N | N | Y | Y | Not triggered | | OEMP |
| B90 | For the duration of operation, the Applicant must: a) continue to implement all reasonable and feasible best practice noise mitigation measures; b) continue to investigate ways to reduce the noise generated by the development, including maximum noise levels which may result in sleep disturbance; and c) report on these investigations and the implementation and effectiveness of these measures in the Annual Review to the satisfaction of the Secretary. | Operation | Operation | N | N | N | Y | Y | Not triggered | | OEMP |
| B91 | Prior to Early Works and Fill Importation, archival recording of the entire former DNSDC site must be undertaken in accordance with the Non-Indigenous Heritage Assessment (artefact, 2016) by a suitably qualified and experienced person(s). | Pre-construction | Prior to commencement of Early works and fill importation | Y | N | N | Y | Y | Compliant | 30/05/2018 | EWEMP was provided for information only on 30/05/2018 |
| B92 | Prior to commencement of Early Works and Fill Importation, the Applicant must prepare a Heritage Management Plan , to the satisfaction of the Secretary. The plan must form part of the CEMP required by C3 and must: (a) be prepared by suitably qualified and experienced person(s); (b) be prepared in consultation with NSW Heritage Division, Council, relevant landowners and stakeholders including the Moorebank Heritage Group (MHG) and Department of Defence. | Pre-construction | Prior to commencement of Early works and fill importation | Y | Y | Y | Y | Y | Compliant | 15/06/2018 | The EWEMP / EWHMP has been superseded by the CHMP (Rev 6) - 12 June 2018, approved by the DP&E on 15/06/2018 |
| B93 | The Heritage Management Plan must include: (a) plans/strategies to monitor, mitigate and manage the effects of the development on identified PADs; (b) measure to ensure site workers receive suitable heritage inductions prior to carrying out any activities which may cause impacts to heritage, and that suitable records are kept of these inductions; (c) a program and description of the measures/procedures to be implemented for: (i) undertaking surface surveys and archaeological investigations (where subsurface disturbance is proposed) of any items of heritage significance; (ii) protecting heritage items located outside the disturbance area from the impacts of the development; (iii) managing any new heritage items discovered during the development; and (iv) additional archaeological excavation and recording of any significant heritage deposits uncovered during demolition. | Pre-construction | Prior to commencement of Early works and fill importation | Y | Y | Y | Y | Y | Compliant | 15/06/2018 | The EWEMP / EWHMP has been superseded by the CHMP (Rev 6) - 12 June 2018, approved by the DP&E on 15/06/2018 |
| B94 | Prior to commencement of Early Works and Fill Importation, archaeological monitoring and recording must be undertaken at potential archaeological deposits (PADs) V and W in accordance with the Non-Indigenous Heritage Assessment (artefact 2016) by a suitably qualified and experienced archaeologist with Excavation Director Criteria qualifications. | Pre-construction | Prior to commencement of Early works and fill importation | Y | N | N | Y | Y | Compliant | 7/03/2018 | * MPES2: Archaeological Method Statement for PAD V and W (7 March 2018) prepared by Artefact * Future management of potential archaeological resources within the Moorebank Precinct East (MPE) PADs V and W (28 March 2018) prepared by Artefact |
| B95 | The results must be reported to the Secretary within one month of completion of monitoring and recording at PADs V and W, along with recommendations for further monitoring at additional sites, if significant archaeological deposits are encountered. | Pre-construction | Within one month of completion of monitoring and recording at PADs V and W | Y | N | N | Y | Y | Compliant | 2/05/2018 | A summary of excavation results and future management of potential archaeological resources within the Moorebank Precinct East (MPE) PADs V and W was prepared by Artefact, dated 2 May 2018. |
| B96 | Fill importation must not commence within 10 metres of PADs V and W until the results of any further monitoring and recording, along with any additional Non-Indigenous Heritage management measures, are submitted to the Secretary and included in an updated Heritage Management Plan to the satisfaction of the Secretary. | Pre-construction | Prior to commencement of Early works and fill importation | Y | N | N | Y | Y | Not triggered | | Exclusion zone was implemented and maintained prior to early works. Reporting as required under B95 did not require any additional monitoring and recording. |
| B97 | Before commencement of construction, the Applicant must prepare an Unexpected Finds Protocol for the development in consultation with the Registered Aboriginal Parties, OEH and the NSW Heritage Division and must implement the Protocol in accordance with its terms. | Pre-construction | Prior to commencement of Construction | N | Y | Y | Y | Y | Compliant | 15/06/2018 | EWEMP / EWHMP superseded by CHMP (Rev 6) - 12 June 2018 * Figure 3-10 Unexpected find procedure (aboriginal heritage) * Figure 3-11 Unexpected find procedure (Aboriginal heritage) * Figure 3-12 Unexpected find procedure (Non-Aboriginal heritage) |
| B98 | If human remains are discovered on site, then all work surrounding the area must cease, and the area must be secured. The Applicant must immediately notify NSW Police and OEH, and work must not recommence in the area until authorised by NSW Police and OEH. | Construction | Early works and fill importation | Y | Y | Y | Y | Y | Ongoing | | EWHMP CHMP |
| B99 | If any Aboriginal object or Aboriginal place is identified on site, or suspected to be on site: (b) all work in the immediate vicinity of the object or place must cease immediately; (i) a 10m buffer area around the object or place must be cordoned off; and (j) OEH must be contacted immediately | Construction | Early works and fill importation | Y | Y | Y | Y | Y | Ongoing | | EWHMP CHMP |
| B100 | Work in the immediate vicinity may only recommence if: (a) the object or place is confirmed by OEH upon consultation with the Registered Aboriginal Parties, not to be an Aboriginal object or Aboriginal Place; or (b) an Aboriginal Cultural Heritage Management Plan is prepared in consultation with the Registered Aboriginal Parties and OEH to include the object or place and appropriate measures in respect of it, and the Plan is approved by the Secretary; or (c) OEH is satisfied as to the measures to be implemented in respect of the object or place and makes a written direction in that regard. | Construction | Early works and fill importation | Y | Y | Y | Y | Y | Ongoing | | EWHMP CHMP |
| B101 | Prior to commencement of operation, the Applicant must prepare a Heritage Interpretation Plan based on the recommendations contained in the Heritage Interpretation Strategy (artefact, 2017) approved under MPE Stage 1. The plan must be prepared for the entire Moorebank Intermodal Precinct (MPE and MPW sites). | Pre-operation | Prior to Operation | N | N | N | Y | Y | Ongoing | | OEMP |
| B102 | The plan must form part of the OEMP required by condition C3 and must: (a) be prepared by a suitably qualified and experienced person(s); (b) be prepared in consultation with NSW Heritage Division, Council, relevant landowners and stakeholders including the Moorebank Heritage Group (MHG), Department of Defence, as well as the Relevant Aboriginal Parties (RAPs) should themes relating to Aboriginal heritage be included for interpretation; and (c) be approved by the Secretary prior to the commencement of operation. | Pre-operation | Prior to Operation | N | N | N | Y | Y | Ongoing | | OEMP |
| B103 | The Applicant must: (a) ensure that no more than 4.69 hectares of native vegetation is cleared for the development; and (b) minimise: i. the impacts of the development on hollow-bearing trees ii. the clearing of native vegetation and key habitat within the approved disturbance footprint | Construction | Construction | N | Y | Y | Y | Y | Compliant | 1/06/2018 | CFFMP |

| CoC | Requirement | High Level Phases | Timing for Compliance | Works Area/Package (per Appendix I, Table 4-8 of RTS); Phase (per CoC A18) | | | | Secretary Approval Required? | Compliance Status | Date of Approval/ Compliance | Evidence |
|------|---|-------------------|---|--|---|---|----------------------------|------------------------------|-------------------|------------------------------|---|
| | | | | Works Area/Package (per Appendix I, Table 4-8 of RTS); Phase (per CoC A18) | Construction Phase A (excl Moorebank Ave) (Phase B & C) | Construction Phase B (Moorebank Avenue Works) (Phase B & C) | Operation (Phase D, E & F) | | | | |
| B104 | Prior to the commencement of construction, unless the Secretary agrees otherwise, the Applicant must retire biodiversity credits of a number and class specified in Tables 6 and 7 below, and provide evidence to the satisfaction of the Secretary. The retirement of credits must be carried out in accordance with the NSW Biodiversity Offsets Policy for Major Projects, and can be achieved by: (a) acquiring or retiring credits under the BioBanking scheme established under the then Threatened Species Conservation Act 1995 (b) making payments into an offset fund that has been established by the NSW Government; or (c) providing suitable supplementary measures. | Construction | Prior to commencement of Construction | N | Y | Y | Y | Y | Non compliant | | Due to the biobanking agreement still being finalised, the credits have not been retired. The DP&E was notified on this in correspondence on 3 and 5 April 2018. Approval to extend the period to retire the credits under B104 was granted on 24/4/2018. No impacts on the species identified in Tables 6 and 7 of CoC as well as a 30 m buffer around each impacted individual stem will occur until credits are retired. Environmental incident reported to DP&E (Oct 2018) In summary, on 12 September 2018 an area of occupancy for <i>Hibbertia puberula</i> subsp <i>puberula</i> was accessed by construction vehicles. On 13 September 2018 it was established that impacts had occurred within the area of occupancy for <i>Hibbertia puberula</i> subsp <i>puberula</i> which is a non-compliance against the requirements of CoC B104. A survey of the location identified that 0.46 ha had been impacted. No <i>Hibbertia puberula</i> subsp <i>puberula</i> plants were recorded in the impacted area during the survey. The impacted area is located within the MPE Stage 2 site and all plants were identified for removal for the MPE Stage 2 Project, following the satisfaction of all relevant CoC, including B104. |
| B105 | Notwithstanding condition B102, the Applicant: (a) may elect to retire biodiversity credits in conjunction with the retirement of biodiversity credits for other developments on the MPE or MPW developments, prior to the commencement of construction of this development, or at another time agreed by the Secretary; and (b) is not required to retire credits for biodiversity impacts that it has already offset under another development consent, pending the provision of evidence of what credits were retired to offset which development. | Construction | Prior to commencement of Construction | N | Y | Y | Y | Y | In Progress | | As above |
| B106 | Prior to early works, a baseline monitoring program must be prepared in consultation with OEH and DPI to define pre-development conditions for water quality, invertebrates and fish assemblages. The results of this monitoring program are to be used to: (a) develop a Biodiversity Monitoring Strategy to identify any changes between upstream and downstream sites as a result of the construction and operation of the development; and (b) set the stormwater water quality and quantity performance criteria referred to in condition B41. | Pre-construction | Prior to commencement of Early works and fill importation | Y | Y | Y | Y | Y | Compliant | 19/06/2018 | A Biodiversity Monitoring Strategy was submitted to DP&E on 19/06/2018 for information. |
| B107 | Any unavoidable indirect impacts as identified through the Biodiversity Monitoring Strategy required under condition B105, e.g. impacts of change hydrology on vegetation in boot land/ biobank site must be identified and measures to address this must be developed in consultation with OEH and implemented to the satisfaction of the Secretary. Measures may include additional offsetting. | Construction | Construction | Y | Y | Y | Y | Y | Ongoing | | EWFFMP, CFFMP |
| B108 | Prior to clearing of native vegetation, the Applicant must prepare a Construction Flora and Fauna Management Plan (CFFMP) in consultation with OEH. The CFFMP must form part of the CEMP required by condition C1 and must include the following: (a) measures to minimise the loss of key fauna habitat, including tree hollows; (b) measures to minimise the impacts on fauna on site, including conducting fauna pre-clearance surveys prior to vegetation clearing and building demolition; (c) controlling weeds and feral pests; (d) an Unexpected Finds Procedure detailing procedures and management measures to be implemented in the event that flora and fauna is uncovered in any area not identified in the updated Biodiversity Assessment (BAR); (e) to ensure biodiversity values not intended to be impacted are protected. These measures may include barriers and mapping of protected/ 'no-go' areas; and (f) a program to monitor the effectiveness of the measures in the CFFMP. | Pre-construction | Prior to commencement of Construction | N | Y | Y | Y | Y | Compliant | 1/06/2018 | The CFFMP (Rev 5) - 2 May 2018, was approved by the DP&E on 1/06/2018 |
| B109 | Prior to removing/clearing any vegetation, pre-clearing surveys and inspections for threatened species, populations and ecological communities must be undertaken to confirm the on-site location of those entities. The surveys and inspections, and any subsequent relocation of species and associated management measures, must be undertaken under the guidance of a suitably qualified and experienced ecologist. Methodologies must be incorporated into the Construction Flora and Fauna Management Plan required under condition B107. The agreement of OEH, whichever is the relevant agency, is required for any proposed amendments to the location or reclassification of threatened species, populations and ecological communities as identified in the updated BAR. | Pre-construction | Prior to commencement of Early works and fill importation | Y | Y | Y | Y | Y | Ongoing | 1/06/2018 | Section 3.3 of CFFMP (rev 5) - 2 May 2018, approved by the DP&E on 1/06/2018 includes management measures required prior to the removal and clearing of vegetation. A Clearing Protocol is included in Appendix A of the approved CFFMP. |
| B110 | Prior to operation, the Applicant must prepare an Operational Flora and Fauna Management Plan (OFFMP) in consultation with OEH. The OFFMP must form part of the OEMP required by condition C3 and must include measures to ensure biodiversity values not intended to be impacted are protected, including but not limited to: (i) weed control; (ii) feral animal control; (iii) pathogen management procedures; (iv) monitoring; and (v) rehabilitation actions. | Pre-operation | Prior to Operation | N | N | N | Y | Y | Ongoing | | OEMP |
| B111 | Bushfire asset protection zones are to be contained wholly within the site boundary and management of the inner protection zone and must not impact on the Boot Land. | Detailed design | Detailed design | N | N | N | Y | Y | Compliant | | CTP / Detailed design OEMP |
| B112 | The Applicant (the operator/occupant of each premises) must store and handle all chemicals, fuels and oils, including Dangerous Goods as defined in the Australian Code for the Transport of Dangerous Goods by Road & Rail, in accordance with: (a) the requirements of all relevant Australian Standards; and (b) the NSW EPA's Storing and Handling of Liquids: Environmental Protection – Participants Handbook if the chemicals are liquids. In the event of an inconsistency between the requirements listed above, the most stringent requirement shall prevail to the extent of the inconsistency. | Construction | Early works and fill importation | Y | Y | Y | Y | Y | Ongoing | | EWSWMP CSWMP |
| B113 | The Applicant (the operator/occupant of each premises) must ensure compliance with the Environment Protection Manual for Authorised Officers: Bunding and Spill Management – technical bulletin (EPA, 1997 and that for liquids, a minimum bund volume of 110% of the volume of the largest single stored volume within the bund is required. | Construction | Construction | Y | Y | Y | Y | Y | Compliant | 8/06/2018 | CSWMP |
| B114 | The quantities of Dangerous Goods present at any time within each premises or transported from and to the development must be kept below the screening threshold quantities listed in the Department's Hazardous and Offensive Development Guidelines Application Guidelines Applying SEPP 33 (January 2011). | Construction | Construction | Y | Y | Y | Y | Y | Compliant | 8/06/2018 | CSWMP |
| B115 | Prior to occupation of each premises and in each instance of occupation by a new occupant, a report must be submitted to the Secretary confirming that the premises will be operated so as to comply with the requirements of conditions B111 and B113. | Operation | Occupation | N | N | N | Y | Y | Not triggered | | CTP OEMP |
| B116 | Six months prior to operation, the Applicant must prepare an Emergency Response Plan , in consultation with FRNSW and NSW Police Force. The Emergency Response Plan must include, but not be limited to: (a) protocols and procedures to be followed during emergency situations associated with the operation of the project (including fires and explosions). The protocols and procedures are to take into account the needs of people with a disability or who may experience access problems in emergency situations; (b) details of traffic management measures to be implemented during emergencies, where appropriate, to minimise the potential for escalation of the emergency; (c) design and management measures to address the potential environmental impacts of an emergency situation, including measures for containment of contaminated fire-fighting water, fuel spills and gaseous combustion products; and (d) details of a training and testing program to ensure that all operational staff are familiar with the Emergency Response Plan. | Pre-operation | 6 months prior to operation | N | N | N | Y | Y | Ongoing | | OEMP |
| B117 | All waste generated by the project must be assessed, classified and managed in accordance with the <i>Waste Classification Guidelines Part 1: Classifying Waste</i> EPA 2014. | Construction | Construction | Y | Y | Y | Y | Y | Compliant | 1/06/2018 | CDWMP |
| B118 | Prior to the commencement of early works, the Applicant must prepare a Construction and Demolition Waste Management Plan for the development to the satisfaction of the Secretary. The plan must form part of the CEMP required by condition C1 and must detail the quantities of each waste type generated during construction and the proposed reuse, recycling and disposal locations. | Pre-construction | Prior to commencement of Early works and fill importation | Y | Y | Y | Y | Y | Compliant | 1/06/2018 | EWEMP / EWCDWMP has been superseded by the CDWMP (Rev 6) - 27 April 2018, approved by the DP&E on 1/06/2018 |

| CoC | Requirement | High Level Phases | Timing for Compliance | Works Area/Package (per Appendix I, Table 4-8 of RTS); Phase (per CoC A18) | | | | Secretary Approval Required? | Compliance Status | Date of Approval/ Compliance | Evidence |
|------|--|-------------------|--|--|---|---|----------------------------|------------------------------|-------------------|-------------------------------------|--|
| | | | | Works Area/Package (per Appendix I, Table 4-8 of RTS); Phase (per CoC A18) | Construction Phase A (excl Moorebank Ave) (Phase B & C) | Construction Phase B (Moorebank Avenue Works) (Phase B & C) | Operation (Phase D, E & F) | | | | |
| B119 | The Applicant must: (a) not commence construction until the Construction and Demolition Waste Management Plan is approved by the Secretary; and (b) carry out the development in accordance with the most recent version of the Construction and Demolition Waste Management Plan approved by the Secretary. | Pre-construction | Prior to commencement of Construction | Y | Y | Y | Y | Y | Compliant | 1/06/2018 | EWEMP / EWCDWMP has been superseded by the CDWMP (Rev 6) - 27 April 2018, approved by the DP&E on 1/06/2018 |
| B120 | Prior to the commencement of operation, the Applicant must prepare a Waste Management Plan for the development to the satisfaction of the Secretary. The Waste Management Plan must form part of the OEMP required by condition C3 and be prepared in accordance with condition C7. The Plan must: (a) detail the type and quantity of waste to be generated during operation of the development; (b) describe the handling, storage and disposal of all waste streams generated on site, consistent with the Protection of the Environment Operations Act 1997, Protection of the Environment Operations (Waste) Regulation 2014 and the Waste Classification Guidelines Part 1: Classifying Waste (EPA, 2014) (as may be updated or replaced from time to time); (c) detail the materials to be reused or recycled, either on or off site; and (d) include the Management and Mitigation Measures included in APPENDIX B. | Pre-operation | Prior to Operation | N | N | N | Y | Y | Ongoing | | OEMP |
| B121 | Waste must be secured and maintained within designated waste storage areas at all times and must not leave the site or be deposited on or otherwise enter neighbouring public or private properties. | Operation | Operation | N | N | N | Y | Y | Ongoing | | OEMP |
| B122 | All waste materials removed from the site must only be directed to a waste management facility or premises lawfully permitted to accept the materials. | All | Throughout Construction and Operation | Y | Y | Y | Y | Y | Compliant | 1/06/2018 | CDWMP |
| B123 | The Applicant must assess and classify all liquid and non-liquid wastes to be taken off site in accordance with the latest version of EPA's <i>Waste Classification Guidelines Part 1: Classifying Waste</i> (EPA, 2014). | All | Throughout Construction and Operation | Y | Y | Y | Y | Y | Compliant | 1/06/2018 | CDWMP |
| B124 | Waste generated outside the site must not be received at the site for storage, treatment, processing, reprocessing, or disposal unless it satisfies these conditions. | All | Throughout Construction and Operation | Y | Y | Y | Y | Y | Compliant | CDWMP: 1/06/2018 CSMP: 8/06/2018 | CDWMP / Spoil MP |
| B125 | The Applicant must retain all sampling and waste classification data for the life of the development in accordance with the requirements of EPA. | All | Throughout Construction and Operation | Y | Y | Y | Y | Y | Compliant | 8/06/2018 | CSMP |
| B126 | The collection of waste generated during operation of the development must be undertaken between 7 am to 10 pm Monday to Friday | Operation | Operation | N | N | N | Y | Y | Not triggered | | OEMP |
| B127 | The Applicant must: (a) take all reasonable steps to manage pests and vermin on the site; (b) manage declared noxious weeds on the site in accordance with the requirements of the Noxious Weeds Act 1993; and (c) inspect the site on a regular basis, no less than every 3 months, to ensure that these measures are working effectively, and that pests, vermin or noxious weeds are not present on site in sufficient numbers to pose an environmental hazard, or cause the loss of amenity in the surrounding area. Note: For the purposes of this condition, noxious weeds are those species subject to an order declared under the Noxious Weed Act 1993. | Construction | Early works and fill importation | Y | Y | Y | Y | Y | Ongoing | | GMMS FFMP |
| B128 | The Applicant must provide the NSW EPA with a copy of all reports to date relating to the assessment of per- and poly-fluoroalkyl substances including perfluorooctanoate (PFAS) undertaken for the Site within 3 months of this consent | Construction | Early works and fill importation | Y | Y | Y | Y | Y | Compliant | | CTP |
| B129 | Prior to the commencement of early works or construction on site, the Applicant must engage a Site Auditor accredited under the EPA <i>Contaminated Land Management Act 1997</i> NSW Site Auditor Scheme. | Pre-construction | Prior to commencement of Early works and fill importation | Y | Y | Y | Y | Y | Compliant | 15/02/2018 | The Site Auditor was endorsed by EPA on 15/02/2018 |
| B130 | Prior to an occupation certificate being issued, the Applicant must submit to the Secretary a Site Audit Statement, prepared in accordance with the NSW Contaminated Land Management – Guidelines for the NSW Site Auditor Scheme (3rd edition, 2017), which demonstrates that the site is suitable for its intended land use (i.e. Section 'A'). The Site Auditor must consider the most up to date PFAS guidance. | Operation | Prior to issue of occupation certificate | Y | Y | Y | Y | Y | Not triggered | | CTP: 8/06/2018 CEMP: 8/06/2018 |
| B131 | If the Site Auditor determines that further assessment of PFAS is required to adequately assess the site in accordance with the current guidance "Designing Sampling Programs for Sites Potentially Contaminated by PFAS (EPA 2016)", the assessment(s) are to be completed and submitted to the EPA within 6 months of granting of consent. | Pre-construction | Construction | Y | Y | Y | Y | Y | Ongoing | | CTP CLMP |
| B132 | Should the Applicant identify a potential risk to off-site receptors due to PFAS contamination, the Applicant must contact the NSW EPA as soon as practicable to discuss requirements for community consultation and long term management. | Pre-construction | Construction | Y | Y | Y | Y | Y | Ongoing | | CTP CLMP |
| B133 | Prior to any demolition on the site, and entry and any subsurface activities within the southern burial pits, an UXO, EO and EOW Site Assessment Survey must be undertaken by an UXO contractor listed on the Defence Panel of suitably qualified UXO consultants and contractors and submitted to the Secretary. | Pre-construction | Prior to any demolition on the site, and entry and any subsurface activities within the southern burial pits | N | N | N | Y | Y | Compliant | 30/05/2018 | G-tek Australia Pty Limited (G-tek) reviewed previous reports and activities with particular emphasis on the potential for remnant unexploded ordnance (UXO), explosive ordnance (EO) and explosive ordnance waste (EOW) within the overall Site and the area referred to as the "southern burial pits". Letter dated 15 January 2018 indicated that that no additional UXO, EO or EOW Site Assessment Surveys are required within the southern burial pits area is required prior to any demolition, entry or subsurface activities within the area. This was submitted to DP&E as part of the CMP and approved on 30/05/18. |
| B134 | Prior to early works and fill importation, a Contamination Management Plan must be prepared to the satisfaction of the Secretary and form part of the CEMP required under condition C1. The Contamination Management Plan is to be based on the Environmental Management Plan prepared by GHD (2016) and results of the UXO, EO and EOW Site Assessment Survey and must take into account additional risks posed by the proposed works and in particular: (a) excavation within the southern burial pits; (b) removal/remediation of underground storage tanks; (c) disturbance of soil containing asbestos material; and (d) demolition of buildings containing asbestos materials. | Pre-construction | Prior to commencement of Early works and fill importation | Y | Y | Y | Y | Y | Compliant | 30/05/2018 | CMP prepared EPRisk (17 April 2018), and approved 30/05/18 as a stage CMP |
| B135 | The Contamination Management Plan must include: (a) an UXO, EO and EOW management and remediation plan , prepared by a qualified person(s) listed on the Defence Panel; (b) an Asbestos Management Plan ; and (c) Unexpected Finds Procedure . The Contamination Management Plan must be approved by a NSW EPA Accredited Site Auditor prior to submission to the Secretary. | Pre-construction | Prior to commencement of Early works and fill importation | Y | Y | Y | Y | Y | Compliant | 30/05/2018 | A staged CMP was approved 30/05/18 CMP prepared EPRisk (17 April 2018) includes: * Appendix C - UXO, EO and EOW management and remediation plan * An unexpected finds program is included in Table 8 Appendix E - Accredited site auditor |
| B136 | Following demolition, a supplementary UXO, EO and EOW Site Assessment Survey is to be undertaken and an updated Contamination Management Plan is to be prepared to the satisfaction of the Secretary to address any additional contamination issues identified. Remediation works must only be carried out by suitably qualified and experienced contractor(s) including a contractor listed on the Defence Panel in the case of UXO, EO and EOW. | Construction | Following demolition | Y | Y | Y | Y | Y | Ongoing | 8/06/2018 | CEMP |
| B137 | Details of any containment cells located on the site following remediation shall be provided to the Secretary, including relevant GPS data on the extent of the cell and details of the long term management of the cells. | Construction | Construction | Y | Y | Y | Y | Y | Ongoing | | CLMP |
| B138 | All containment cells located on the site following remediation shall be registered on title including, details of relevant Contamination Management requirements | Construction | Construction | Y | Y | Y | Y | Y | Ongoing | | CLMP |

| CoC | Requirement | High Level Phases | Timing for Compliance | Works Area/Package (per Appendix I, Table 4-8 of RTS); Phase (per CoC A18) | | | | Secretary Approval Required? | Compliance Status | Date of Approval/ Compliance | Evidence |
|------|---|-------------------|---|--|---|---|----------------------------|------------------------------|-------------------|------------------------------|--|
| | | | | Works Area/Package (per Appendix I, Table 4-8 of RTS); Phase (per CoC A18) | Construction Phase A (excl Moorebank Ave) (Phase B & C) | Construction Phase B (Moorebank Avenue Works) (Phase B & C) | Operation (Phase D, E & F) | | | | |
| B139 | <p>Prior to commencement of permanent built surface works and/or landscaping, or as otherwise agreed by the Secretary, an Urban Heat Island (UHI) Mitigation Strategy must be prepared and submitted to the Secretary for approval, in consultation with the NSW Government Architect. The UHIMS must be prepared by a suitably qualified and experienced person(s).</p> <p>The UHI Mitigation Strategy must:</p> <ul style="list-style-type: none"> (a) review the current architectural details, building layout, landscaping provision, shading provision, landscape irrigation, stormwater water detention and WSUD, as well as building and paving material specifications; (b) make recommendations to mitigate the UHI effects generated by the development including but not limited to: <ul style="list-style-type: none"> (i) provision of WSUD elements; (ii) street tree planting; (iii) landscape coverage and screening; (iv) use of building material including reflectivity; (v) use of pavement material including reflectivity; (vi) improved green space maintained by independent, climate resilient water supplies, to achieve increased amenity and urban cooling; and (vii) heat generation from operations; and (c) include a design strategy with the goal to achieve a 4°C degree decrease in temperature compared to neighbouring industrial developments; (d) details of where and how recommendations from the UHI Mitigation Strategy have been incorporated into the: <ul style="list-style-type: none"> (i) updated final Development Layout Plans and WSUD Plans required by conditions A22 and A23; (ii) updated final architectural details required by condition A24; (iii) UDLP required by condition B141; (iv) CEMP required by condition C1; and (v) OEMP required by condition C3. | Pre-construction | Prior to commencement of permanent built surface works and/or landscaping | N | Y | Y | Y | Y | In Progress | | CTP |
| B140 | <p>Prior to commencement of permanent built surface works and/or landscaping, or as otherwise agreed by the Secretary, an Urban Design and Landscape Plan (UDLP) must be prepared. The UDLP must be prepared by a suitably qualified and experienced person(s), in consultation with the relevant council(s). The UDLP must be approved by the Secretary. The UDLP must present an integrated urban and landscape design for the development, and must include, but not be limited to:</p> <ul style="list-style-type: none"> (a) identification of design objectives, principles and standards based on - <ul style="list-style-type: none"> (i) local environmental values, (ii) urban design context, (iii) sustainable design and maintenance, (iv) community, visitor and worker safety, amenity and privacy, including 'safer by design' principles where relevant, (v) relevant design standards and guidelines, (vi) addressing the visual amenity and values of adjoining receivers, (vii) minimising and addressing the footprint of the project (including at operational facilities), and (viii) the urban design principles outlined in the documents referred to in condition A2; (b) landscaping and building design opportunities to mitigate the visual impacts of buildings and infrastructure particularly when viewed from Moorebank Avenue, Wattle Grove, and Casula); (c) details on the location of existing vegetation and proposed landscaping (including use of endemic and advanced tree species where practicable). Details of species to be replanted/revegetated must be provided, including their appropriateness to the area and habitat for threatened species. Where feasible and reasonable, top soil and vegetation to be removed must be reused; (d) details of pedestrian movement through the site and to surrounding areas for employees; (e) incorporate the following: <ul style="list-style-type: none"> (i) a minimum landscaped width of 10m within the 18m setback from Moorebank Avenue; (ii) the footprint of the warehouses along the eastern boundary must be reduced so that the car parking area and warehouse can be setback a minimum of 5m from the eastern internal road to provide visual screening of the building, and adequate landscape width to support canopy trees; (iii) landscaping located around the car parking areas is to support sufficient canopy trees to provide visual screening to the warehouse buildings; (iv) 15% of the site landscaped at ground level, 10% of which must include soft landscaping and not include land set aside for future access ways; (v) minimum rate of 1 canopy tree per 30m² of landscaped area; (vi) a 2.5 m wide landscaped bay every 6-8 car spaces incorporating canopy trees for shade; (vii) perimeter site screening using advanced shrubs and canopy trees; (viii) perimeter and on site detention and biofiltration/bioretenion basin fences higher than 1.2m must be transparent and dark in colour but not constructed of chain wire. (f) include a planting schedule including details of the soil specification and depth and irrigation systems as well as tree and shrub species, expected mature height, pot sizes and planting densities) and deep soil areas containing soil (not spoil); (g) a description of the retaining walls, including the graphics such as sections, perspective views and material details; (h) details of the landscaped areas and solid fencing required to screen waste bin or other outside storage areas; (i) graffiti management commitments and provisions; (j) the sub-plans identified in condition B140; | Pre-construction | Prior to commencement of permanent built surface works and/or landscaping | N | Y | Y | Y | Y | In Progress | | CTP |
| B141 | <p>The Urban Design and Landscape Plan must include the following sub-plans:</p> <ul style="list-style-type: none"> (a) a Landscape Vegetation Management Sub Plan to assist in the monitoring and maintenance of landscape elements required to be delivered as part of the approval. The Plan must be prepared and approved by the Secretary within twelve months of the date of this approval, unless otherwise agreed by the Secretary. <p>The Plan must provide details of the monitoring and maintenance procedures for the landscape vegetation elements, rehabilitated vegetation and landscaping (including weed and pathogen control) including performance indicators, identification of commitments, identification of the responsibilities of each entity involved in the management of the intermodal precinct including the overarching management responsibilities and obligations for common land and tenant responsibilities, timing and duration, as well as contingencies where rehabilitation of vegetation and landscaping measures fail.</p> <p>The approved plan must be delivered prior to occupation of the warehouse and freight village.</p> <ul style="list-style-type: none"> (b) a Lighting Sub Plan to assist in the control of lighting and reduce the visual impact of the 24 hour operational facility when viewed from residents within residential areas within the locality. The Plan must provide an assessment of the location, design specification and impacts of operational lighting associated with the development and measures proposed to minimise lighting impacts and standardise lighting design within the MPE development. The Plan must be prepared and approved by the Secretary. The Applicant must ensure that the lighting associated with the development: <ul style="list-style-type: none"> (i) complies with the latest version of AS 4282-1997 - Control of the obtrusive effects of outdoor lighting (Standards Australia, 1997); (ii) is mounted, screened and directed in such a manner that it does not create a nuisance to surrounding properties or the public road network; and (iii) is designed to reduce light spill and mitigate the visual impact of the 24-hour facility when viewed from the residential areas in the locality and the Boot Land. (c) The Lighting Sub Plan must identify and provide details of the common and individual lighting throughout the development to reduce light spill and mitigate visual impact on the residential areas in the locality by: <ul style="list-style-type: none"> (i) eliminating upward spill light; (ii) directing light downwards, not upwards; (iii) using shielded fittings; (iv) avoiding 'over' lighting; (v) switching lights off when not required; (vi) using energy efficient bulbs; (vii) using asymmetric beams, where floodlights are used; (viii) ensuring lights are not directed towards reflective surfaces; and (ix) using warm white colours. <p>The approved plan must be delivered prior to occupation of the warehouse and freight village.</p> <ul style="list-style-type: none"> (d) Cycling and Pedestrian Access and Facilities Sub Plan to assist in safe cycling and pedestrian connectivity through the MPE precinct by providing dedicated linkages between the warehouses, the freight freight village and Moorebank Avenue that will contribute to the quality and safety of the pedestrian and cyclist environment associated with the development. The Plan must be prepared by a suitably qualified and experienced person(s) and approved by the Secretary within twelve months of the | Pre-construction | Prior to commencement of permanent built surface works and/or landscaping | N | Y | Y | Y | Y | In Progress | | CTP/UDLP |
| B142 | <p>Warehouses and the freight village must be designed and operated to meet ESD principles including:</p> <ul style="list-style-type: none"> (a) passive solar design; (b) use of energy efficient plant and equipment; (c) use of renewable energy sources; (d) cross-ventilation (e) selection of materials with lower energy manufacturing requirements; (f) use of locally sourced materials to reduce impacts associate with transport; (g) rainwater capture and reuse; (h) water efficient fixtures and fittings; and (i) waste minimisation and recycling. | Detailed design | Detailed design | Y | Y | Y | Y | Y | Ongoing | | CTP B141 (e) & (f) - EWDWMP OEMP |
| B143 | <p>Before the commencement of construction, the Applicant must ensure that a Bushfire Emergency and Evacuation Plan is prepared. The Plan must form part of the CEMP and OEMP required by conditions C1 and C3 and must:</p> <ul style="list-style-type: none"> (a) be prepared by a suitably qualified and experienced person(s); (b) be consistent with the Development Planning – A Guide to Developing a Bush Fire Emergency Management and Evacuation Plan, December 2014 and Australian Standard AS3745 2010 Planning for Emergencies in Facilities; and (c) a copy of the plan must be submitted to the Secretary, NSW Rural Fire Service, Council and the Certifying Authority prior to occupation. | Pre-construction | Prior to commencement of Construction | N | Y | Y | Y | Y | Compliant | 8/06/2018 | The BEEP (rev 3) dated 14 June 2018 is included as Appendix O of CEMP (Rev 4) dated 5 April 2018, approved by DP&E 8/06/2018 |

| CoC | Requirement | High Level Phases | Timing for Compliance | Works Area/Package (per Appendix I, Table 4-8 of RTS); Phase (per CoC A18) | | | | Secretary Approval Required? | Compliance Status | Date of Approval/ Compliance | Evidence |
|------|--|-------------------|---|--|---|---|----------------------------|------------------------------|-------------------|------------------------------------|---|
| | | | | Works Area/Package (per Appendix I, Table 4-8 of RTS); Phase (per CoC A18) | Construction Phase A (excl Moorebank Ave) (Phase B & C) | Construction Phase B (Moorebank Avenue Works) (Phase B & C) | Operation (Phase D, E & F) | | | | |
| B144 | The entire site must be managed as an inner protection area (IPA) as outlined within section 4.1.3 and Appendix 5 of the Planning for Bush Fire Protection 2006 and the NSW Rural Fire Service's document Standards for asset protection zones. An updated Bushfire Management Plan must be prepared by a suitably qualified person(s) having regard to the amended final plans and demonstrating that the bushfire asset protection zones can be contained wholly within the site boundary and that management of the inner protection zone will not impact on the Boot Land. The Bushfire Management Plan will be submitted to the Secretary prior to construction of permanent access or buildings, unless otherwise agreed by the Secretary. | Pre-construction | Prior to construction of permanent built works | N | Y | Y | Y | Y | Compliant | 16/06/2018 | The BMP (rev 3) dated 14 June 2018 i dated 5 April 2018, approved by DP&E 8/06/2018 |
| B145 | Public road access must comply with section 4.1.3(1) of <i>Planning for Bush Fire Protection 2006</i> except for the requirement for through-access. | All | Throughout Construction and Operation | Y | Y | Y | Y | Y | Compliant | CTP: 8/06/2018 BFMP: 15/06/2018 | CTP/ BFMP |
| B146 | The provision of water, electricity and gas must comply with section 4.1.3 of <i>Planning for Bush Fire Protection 2006</i> . | All | Throughout Construction and Operation | Y | Y | Y | Y | Y | Ongoing | CTP: 8/06/2018 BFMP: 15/06/2018 | CTP/ BFMP |
| B147 | Ancillary facilities that are not identified by description and location in the documents listed in A2 must not be constructed unless they satisfy the following criteria: (a) the facility is development of a type that would, if it were not for the purpose of the development, otherwise be exempt or complying development; or (b) the facility is located as follows: (i) at least 50 metres from any waterway unless an erosion and sediment control plan is prepared and implemented so as not to affect water quality in the waterway in accordance with Managing Urban Stormwater series; (ii) within or adjacent to land upon which the development is being carried out; (iii) with ready access to a road network; (iv) so as to avoid the need for heavy vehicles to travel on local streets or through residential areas in order to access the facility; (v) on level land; | Construction | Early works and fill importation | Y | Y | Y | Y | Y | Not triggered | | CEMP Section 1.6.1.3 outlines the procedure to be undertaken should an ancillary facility be required. |
| B148 | Prior to establishment of any ancillary facility that is not identified by description and location in the documents listed in A2 that satisfies the criteria in condition B146, the Applicant must prepare and implement an Ancillary Facilities Management Plan which outlines the environmental management practices and procedures for the establishment and operation of the ancillary facility. The Ancillary Facilities Management Plan must be prepared in consultation with the relevant council and submitted to the Secretary for approval one month prior to installation of ancillary facilities. The Ancillary Facilities Management Plan must detail the management of the ancillary facilities and include: (a) a description of activities to be undertaken during construction (including scheduling of construction); (b) a program for ongoing analysis of the key environmental risks arising from the activities described in subsection (a) of this condition, including an initial risk assessment undertaken prior to the commencement of construction of the development; and (c) details of how the activities described in subsection (a) of this condition will be carried out to: (i) meet the performance outcomes stated in the documents listed in conditions A2; and (ii) manage the risks identified in the risk analysis undertaken in subsection (b) of this condition. | Pre-construction | Prior to commencement of Construction | Y | Y | N | N | Y | Not triggered | | Section 1.6.1.3 of CEMP (Rev 4) dated 5 April 2018, approved by DP&E 8/06/2018, outlines the procedure to be undertaken should an ancillary facility be required. |
| B149 | Minor ancillary facilities comprising lunch sheds, office sheds, and portable toilet facilities, that are not identified in the documents listed in condition A2 and which do not satisfy the criteria set out in condition B146 of this approval must satisfy the following criteria: (a) have no greater environmental and amenity impacts than those that can be managed through the implementation of environmental measures detailed in the CEMP required under condition C1 of this approval; and (b) have been assessed by the ER to have: (i) minimal amenity impacts to surrounding residences and businesses, after consideration of matters such as compliance with the INCG (DECC 2009), traffic and access impacts, dust and odour impacts, and visual (including light spill) impacts; (ii) minimal environmental impact with respect to waste management and flooding; and (iii) no impacts on biodiversity, soil and water, and heritage items beyond those already approved under other terms of this approval. | Construction | Early works and fill importation | Y | Y | N | Y | Y | Not triggered | | CEMP Section 1.6.1.3 outlines the procedure to be undertaken should an ancillary facility be required. |
| B150 | Boundary screening must be erected around all ancillary facilities that are adjacent to sensitive receivers for the duration of construction unless otherwise agreed with relevant Council(s), and affected residents, business operators or landowners. | Pre-construction | Prior to commencement of Construction | Y | Y | Y | Y | Y | Not triggered | | Section 1.6.1.3 of CEMP (Rev 4) dated 5 April 2018, approved by DP&E 8/06/2018, outlines the procedure to be undertaken should an ancillary facility be required. |
| B151 | Boundary screening required under condition B149 must minimise visual, noise and air quality impacts on adjacent sensitive receivers. | Pre-construction | Prior to commencement of Construction | Y | Y | Y | Y | Y | Not triggered | | Section 1.6.1.3 of CEMP (Rev 4) dated 5 April 2018, approved by DP&E 8/06/2018, outlines the procedure to be undertaken should an ancillary facility be required. |
| B152 | All food premises must be designed, constructed and operated to meet legislative requirements and Australian Standards including: (a) the Australian New Zealand Food Standards Code including Food Safety Standard 3.2.2 Food Premises and Equipment; (b) AS 4674-2004: Design, construction and fit out of food premises; (c) AS 4322-1995: Quality and performance of commercial electrical appliances – Hot food storage and display equipment; (d) AS ISO 22000-2005: Food safety management systems-Requirements for any organisation in the food chain. | Detailed design | Detailed design | N | N | N | Y | Y | Not triggered | | CTP |
| B154 | Before early works and fill importation a Community Consultative Committee (CCC) must be established for the Moorebank Intermodal Precinct (MPE and MPW) in accordance with the Department's Community Consultative Committee Guidelines: State Significant Projects (2016). The CCC must function for the duration of construction and for at least 5 years following commencement of operation. Note • The CCC is an advisory committee only. • In accordance with the guidelines, the Committee should comprise an independent chair and appropriate representation from the Applicant, Council and the local community. | Pre-construction | Prior to commencement of Early works and fill importation | Y | Y | Y | Y | Y | Compliant | 23/05/2018 | DPE acknowledged CCC on 23/05/2018 |
| B155 | No later than one month before early works and fill importation, a Community Communication Strategy must be prepared and submitted to the Secretary for approval. The Community Communication Strategy is to provide mechanisms to facilitate communication between the Applicant, the Council and the community (including adjoining affected landowners and businesses, and others directly impacted by the development), during the design and construction of the development. The Community Communication Strategy must: (a) assign a central contact person to keep the nearby sensitive receivers regularly informed throughout the development; (b) detail the mechanisms for regularly consulting with the local community throughout the development, such as holding regular meetings to inform the community of the progress of the development and report on environmental monitoring results; (c) detail a procedure for consulting with nearby sensitive receivers to schedule high noise generating works or manage traffic disruptions; (d) include contact details for key community groups, relevant regulatory authorities, Registered Aboriginal Parties and other interested stakeholders; and (e) include a complaints procedure for recording, responding to and managing complaints, including: (i) email, toll-free telephone number and postal address for receiving complaints; (ii) advertising the contact details for complaints prior to and during operation, via the local newspaper and through on-site signage; (iii) a complaints register to record the date, time and nature of the complaint, details of the complainant and any actions taken to address the complaint; and (iv) procedures for the resolution of any disputes that may arise during the course of the development. | Operation | One month prior to commencement of importation of spoil | N | N | N | Y | Y | Compliant | 1/06/2018 | CCS (Rev 4) dated 7 May 2018, approved by DP&E 01/06/2018 |
| C1 | Before the commencement of construction, a Construction Environmental Management Plan (CEMP) must be prepared to the satisfaction of the Secretary. The CEMP must: (a) identify the statutory approvals required to carry out the development; (b) outline all environmental management practices and procedures to be followed during construction works associated with the development; (c) describe all activities to be undertaken on the site during construction of the development, including a clear indication of construction stages; (d) detail how the environmental performance of the construction works will be monitored, and what actions will be taken to address identified adverse environmental impacts; (e) describe the roles and responsibilities for all relevant employees involved in construction works associated with the development; and (f) include the management plans required under this approval, including: (i) Construction Traffic and Access Management Plan; (ii) Concrete Batching Plant Management Plan; (iii) Soil and Water Management Plan; (iv) Flood Emergency Response Plan; (v) Construction Air Quality Management Plan; (vi) Construction Noise and Vibration Management Plan; (vii) Heritage Management Plan; (viii) Construction Flora and Fauna Management; (ix) Construction and Demolition Waste Management Plan; (x) Contamination Management Plan; and (xi) Bushfire Emergency and Evacuation Plan. | Pre-construction | Prior to commencement of Construction | N | Y | Y | Y | Y | Compliant | 8/06/2018 | CEMP (Rev 4) dated 5 April 2018, approved by DP&E 8/06/2018 * CTAMP - Phase A (Rev 9) - approved 15/06/2018 * SWMP (Rev 6) - approved 8/06/2018 * FERP (Rev 5) - approved 1/06/2018 * CAQMP (Rev 4) - approved 1/06/2018 * CNVMP (Rev 5) - approved 15/06/2018 * CHMP (Rev 6) - approved 15/06/2018 * CFFMP (Rev 5) - approved 1/06/2018 * CDWMP (Rev 6) - approved 1/06/2018 * CMP - 30/05/2018 * BEEP (Rev 3) - 8/06/2018 |
| C2 | The Applicant must: (a) not commence construction until the CEMP is approved by the Secretary; and (b) carry out the construction of the development in accordance with the most recent version of the CEMP approved by the Secretary, unless otherwise agreed by the Secretary. | Pre-construction | Prior to commencement of Construction | N | Y | Y | Y | Y | Compliant | 8/06/2018 | CEMP (Rev 4) dated 5 April 2018, approved by DP&E 8/06/2018 |

| CoC | Requirement | High Level Phases | Timing for Compliance | Works Area/Package (per Appendix I, Table 4-8 of RTS); Phase (per CoC A18) | | | | Secretary Approval Required? | Compliance Status | Date of Approval/ Compliance | Evidence |
|-----|---|-------------------|---|--|---|---|----------------------------|------------------------------|-------------------|-------------------------------|---|
| | | | | Works Area/Package (per Appendix I, Table 4-8 of RTS); Phase (per CoC A18) | Construction Phase A (excl Moorebank Ave) (Phase B & C) | Construction Phase B (Moorebank Avenue Works) (Phase B & C) | Operation (Phase D, E & F) | | | | |
| C3 | Before the commencement of operations, a Precinct Operational Environmental Management Plan (OEMP) must be prepared to the satisfaction of the Secretary. The OEMP must: (a) be prepared by a suitably qualified and experienced expert; (b) provide the strategic framework for environmental management of the development; (c) identify the statutory approvals required to carry out the development; (d) identify the infrastructure to be managed under the Precinct OEMP which is to include pavements, stormwater detention and water quality treatment structures and devices; and landscaping; (e) describe the role, responsibility, authority and accountability of all key personnel involved in the environmental management of the development including the overall responsibility for the operational environmental management of the freight village; (f) describe the procedures to be implemented to: (i) keep the local community and relevant agencies informed about the operation and environmental performance of the development; (ii) receive, handle, respond to, and record complaints; (iii) resolve any disputes that may arise; (iv) respond to any non-compliance; (v) respond to emergencies; and (g) include the management plans required under this approval, including: (i) Operational Traffic and Access Management Plan; (ii) Workplace Travel Plan; (iii) Stormwater Infrastructure Operation and Maintenance Plan; (iv) Flood Emergency Response Plan; (v) Operational Air Quality Management Plan; (vi) Operational Noise and Vibration Management Plan; (vii) Heritage Interpretation Plan; (viii) Operational Flora and Fauna Management Plan; (ix) Waste Management Plan; (x) Long-term Contamination Management Plan; and (xi) Bushfire Emergency and Evacuation Plan. | Pre-operation | Prior to Operation | N | N | N | Y | Y | Not triggered | | OEMP |
| C4 | The Applicant must: (a) not commence operation of the development until the OEMP is approved by the Secretary; and (b) operate the development in accordance with the most recent version of the OEMP approved by the Secretary. | Pre-operation | Prior to Operation | N | N | N | Y | Y | Not triggered | | OEMP |
| C5 | Overall responsibility of the development, including the freight village environmental management during operation, must be by the entity responsible for the Precinct environmental management. | Operation | Operation | N | N | N | Y | Y | Not triggered | | OEMP |
| C6 | Prior to occupation of individual warehouses, a Warehouse OEMP must be submitted to the Secretary for approval and must: (a) be generally in accordance with the precinct OEMP required under condition C3; (b) demonstrate compliance with condition B113 regarding maintenance of quantities of dangerous goods below the screening threshold; and (c) include auditing requirements. | Operation | Occupation | N | N | N | Y | Y | Not triggered | | OEMP |
| C7 | The Applicant must ensure that the environmental management plans required under this consent are prepared in accordance with any relevant guidelines, and include: (a) detailed baseline data; (b) a description of: (i) the relevant statutory requirements (including any relevant approval, licence or lease conditions); (ii) any relevant limits or performance measures/criteria; and (iii) the specific performance indicators that are proposed to be used to judge the performance of, or guide the implementation of, the development or any management measures; (c) a description of the management measures to be implemented to comply with the relevant statutory requirements, limits or performance measures/criteria; (d) a program to monitor and report on the: (i) impacts and environmental performance of the development; and (ii) effectiveness of any management measures (see (c) above); (e) a contingency plan to manage any unpredicted impacts and their consequences; (f) a program to investigate and implement ways to improve the environmental performance of the development over time; (g) a protocol for managing and reporting any: (i) incidents and non-compliances; (ii) complaints; (iii) non-compliances with statutory requirements; and (h) a protocol for periodic review of the plan. Note: The Secretary may waive some of these requirements if they are unnecessary or unwarranted for a particular management plan. | All | Throughout Construction and Operation | Y | Y | Y | Y | Y | Ongoing | | All management plans |
| C8 | At least one month prior to the commencement of a new phase of the development, the CEMP or OEMP and applicable subplans must be reviewed and submitted to the Secretary for approval. | Pre-construction | One month prior to the commencement of a new phase of the development | Y | Y | Y | Y | Y | Compliant | 8/06/2018 | CEMP (Rev 4) dated 5 April 2018, approved by DP&E 8/06/2018 and as per C1 above |
| C9 | Within three months of: (a) the submission of an annual review under condition C10; (b) the submission of an incident or non-compliance notification under condition C13; (c) the submission of an audit under condition C18; (d) the approval of any modification of the conditions of this consent; or (e) the issue of a direction of the Secretary under condition A2; the strategies, plans and programs required under this consent must be reviewed, and if necessary to either improve the environmental performance of the development, cater for a modification or comply with a direction, must be revised, to the satisfaction of the Secretary. Where revisions are required, the revised document must be submitted to the Secretary for approval within six weeks of the review. Note: The purpose of this condition is to ensure that strategies, plans and programs are regularly updated to incorporate any measures recommended to improve the environmental performance of the development. | all | Throughout Construction and Operation | N | Y/N | Y | Y | Y | Compliant | 8/06/2018 | CEMP |
| C10 | Each year, the Applicant must submit a review the environmental performance of the development (including all tenants and occupants) to the Department. The review must: (a) describe the development that was carried out in the previous calendar year, and the development that is proposed to be carried out over the next year; (b) include a comprehensive review of the monitoring results and complaints records from the previous year, including a comparison of these against the: (i) the relevant statutory requirements, limits or performance measures/criteria; (ii) requirements of any plan or program required under this consent; (iii) the monitoring results of previous years; and (iv) the relevant predictions in the EIS, Submissions Report, Consolidated assessment clarification responses; Modification Assessment, or conditions of this consent; (c) identify any non-compliance over the previous year, and describe what actions were (or are being) taken to ensure compliance; (d) identify any trends in the monitoring data over the life of the development; (e) identify any discrepancies between the predicted and actual impacts of the development, and analyse the potential cause of any significant discrepancies; and (f) describe what measures will be implemented over the next year to improve the environmental performance of the development. The Applicant must ensure that copies of the Annual Review are submitted to Council and are available to the CCC and any interested person upon request. | All | Throughout Construction and Operation | Y | Y | Y | Y | Y | Compliant | 8/06/2018 | CEMP |
| C11 | The Department must be notified in writing to compliance@planning.nsw.gov.au immediately after the Applicant becomes aware of an incident. The notification must identify the development (including the development application number and the name of the development if it has one), and set out the location and nature of the incident. | All | Throughout Construction and Operation | Y | Y | Y | Y | Y | Ongoing | CEMP: 8/06/2018 OEMP : TBC | CEMP/OEMP |
| C12 | A written incident notification addressing all requirements for such notification set out in Appendix D of this consent, must also be emailed to the Department at the following address: compliance@planning.nsw.gov.au within 7 days after the Applicant becomes aware of an incident. Notification is required to be given under this condition even if the Applicant fails to give the notification required under condition or, having given such notification, subsequently forms the view that an incident has not occurred. | All | Throughout Construction and Operation | Y | Y | Y | Y | Y | Ongoing | CEMP: 8/06/2018 OEMP : TBC | CEMP/OEMP |
| C13 | Within 30 days of the date on which the incident occurred or as otherwise agreed to by the Secretary the Applicant must provide the Secretary and any relevant public authorities (as determined by the Secretary) with a detailed report on the incident addressing all requirements for such reporting set out in Appendix D of this consent, and such further reports as may be requested. | All | Throughout Construction and Operation | Y | Y | Y | Y | Y | Ongoing | CEMP: 8/06/2018 OEMP : TBC | CEMP/OEMP |
| C14 | Any written requirements of the Secretary or relevant public authority (as determined by the Secretary) which may be given at any point in time, to address the cause or impact of an incident must be complied with and within any timeframe specified by the Secretary or relevant public authority. | All | Throughout Construction and Operation | Y | Y | Y | Y | Y | Ongoing | CEMP: 8/06/2018 OEMP : TBC | CEMP/OEMP |

| CoC | Requirement | High Level Phases | Timing for Compliance | Works Area/Package (per Appendix I, Table 4-8 of RTS); Phase (per CoC A18) | | | | Secretary Approval Required? | Compliance Status | Date of Approval/ Compliance | Evidence |
|-----|---|-------------------|---|--|---|---|----------------------------|------------------------------|-------------------|------------------------------|---|
| | | | | Works Area/Package (per Appendix I, Table 4-8 of RTS); Phase (per CoC A18) | Construction Phase A (excl Moorebank Ave) (Phase B & C) | Construction Phase B (Moorebank Avenue Works) (Phase B & C) | Operation (Phase D, E & F) | | | | |
| C15 | If statutory notification is provided to EPA as required under the POEO Act in relation to the development, such notification must also be provided to the Secretary within 24 hours after the notification was provided to EPA. | All | Throughout Construction and Operation | Y | Y | Y | Y | Y | Ongoing | CEMP: 8/06/2018 OEMP: TBC | CEMP/OEMP |
| C16 | The Department must be notified in writing to compliance@planning.nsw.gov.au within 7 days after the Applicant becomes aware of any non-compliance. | All | Throughout Construction and Operation | Y | Y | Y | Y | Y | Ongoing | CEMP: 8/06/2018 OEMP: TBC | CEMP/OEMP |
| C17 | The notification must identify the development and the application number for it, set out the condition of consent that the development is non-compliant with, the way in which it does not comply, the reasons for the non-compliance (if known), and what actions have been, or will be, undertaken to address the non-compliance. | All | Throughout Construction and Operation | Y | Y | Y | Y | Y | Ongoing | CEMP: 8/06/2018 OEMP: TBC | CEMP/OEMP |
| C18 | Within one year of the commencement of any development under this consent, and every three years thereafter, unless the Secretary directs otherwise, the Applicant must commission and pay the full cost of an Independent Environmental Audit (Audit) of the development. Audits must: (a) be led and conducted by a suitably qualified, experienced and independent team of experts whose appointment has been endorsed by the Secretary; (b) be carried out in consultation with the relevant agencies and the CCC; (c) assess the environmental performance of the development (and tenancies) and assess whether it is complying with the relevant requirements in this consent, and any strategy, plan or program required under this consent; and (d) review the adequacy of any approved strategy, plan or program required under this consent; and (e) recommend appropriate measures or actions to improve the environmental performance of the development, and/or any strategy, plan or program required under this consent. | All | Throughout Construction and Operation | Y | Y | Y | Y | Y | Ongoing | CEMP: 8/06/2018 OEMP: TBC | CEMP/OEMP |
| C19 | Within three months of commencing an Independent Environmental Audit, or unless otherwise agreed by the Secretary, a copy of the audit report must be submitted to the Secretary, and any other NSW agency that requests it, together with a response to any recommendations contained in the audit report, and a timetable for the implementation of the recommendations. The recommendations must be implemented to the satisfaction of the Secretary. | All | Throughout Construction and Operation | Y | Y | Y | Y | Y | Ongoing | CEMP: 8/06/2018 OEMP: TBC | CEMP/OEMP |
| C20 | At least 48 hours before the commencement of construction until the completion of all works under this consent, including demolition and remediation, the Applicant must: (a) make copies of the following publicly available on its website: (i) the documents referred to in condition A2 of this consent; (ii) all current statutory approvals for the development; (iii) all approved strategies, plans and programs required under the conditions of this consent; (iv) regular reporting on the environmental performance of the development in accordance with the reporting arrangements in any plans or programs approved under the conditions of this consent; (v) a comprehensive summary of the monitoring results of the development, reported in accordance with the specifications in any conditions of this consent, or any approved plans and programs; (vi) a summary of the current stage and progress of the development; (vii) contact details to enquire about the development or make a complaint; (viii) a complaints register updated on a monthly basis; (ix) the Annual Reviews of the development; (x) audit reports prepared as part of any independent environmental audit of the development and the Applicant's response to the recommendations in any audit report; (xi) any other matter required by the Secretary; and (b) keep such information up to date, to the satisfaction of the Secretary. | All | Prior to commencement of Construction | Y | Y | Y | Y | Y | Compliant | 8/06/2018 | The website is being progressively updated as documents are approved for each stage of the construction activities. |
| C21 | The Proponent must prepare and implement a Compliance Tracking Program to track compliance with the requirements of this approval. The Compliance Tracking Program must be submitted to the Secretary for approval prior to the commencement of construction. The Compliance Tracking Program must include, but not be limited to: (a) provision for the notification of the Secretary prior to the commencement of construction and prior to the commencement of operation of the development (including prior to each stage, where works are being staged); (b) provision for periodic review of the compliance status of the development against the requirements of this approval and the environmental management measures committed to in the documents referred to in condition A2; (c) provision for periodic reporting of compliance status to the Secretary, including but not limited to: (i) a Pre-Construction Compliance Report prior to the commencement of construction, (ii) quarterly Construction Compliance Reports, for the duration of construction, and (iii) a Pre-Operation Compliance Report prior to the commencement of operation, and six monthly operational compliance reports; (d) a program for independent environmental auditing; (e) mechanisms for recording environmental incidents during construction and actions taken in response to those incidents; (f) provision for reporting environmental incidents to the Secretary during construction; (g) procedures for rectifying any non-compliance identified during environmental auditing, review of compliance or incident management; and (h) provision for ensuring all employees, contractors and sub-contractors are aware of, and comply with, the conditions of this approval relevant to their respective activities. | All | Prior to commencement of Construction | Y | Y | Y | Y | Y | Compliant | 8/06/2018 | CTP (rev 5) dated 24 May 2018 was approved by DP&E 8/06/2018 |
| C22 | A suitably qualified and experienced ER who is independent of the development must be nominated by the Applicant, approved by the Secretary and engaged for the duration of construction of the development in accordance with the Environmental Representative Protocol (DPE 2017). Additional ERs may be engaged for the purpose of this condition in which case the obligations to be carried out by an ER under the terms of this consent may be satisfied by any ER that is approved by the Secretary. The details of nominated ER(s) must be submitted to the Secretary for approval no later than one month prior to the commencement of works, or within another timeframe agreed with the Secretary. This condition does not preclude the same ER for MPW projects being considered by the Secretary. | Pre-construction | Prior to commencement of Early works and fill importation | Y | Y | Y | N | Y | Compliant | 14/02/2018 | The ER was appointed 14/02/2018 |
| C23 | Construction must not commence until an ER nominated under C24 has been approved by the Secretary. | Pre-construction | Prior to commencement of Early works and fill importation | Y | Y | Y | Y | Y | Compliant | 14/02/2018 | The ER was appointed 14/02/2018 |
| C24 | From commencement of any works until completion of construction, the approved ER must: (a) on behalf of the Applicant, receive and respond to communication from the Secretary in relation to the environmental performance of the development; (b) consider and inform the Secretary on matters specified in the terms of this consent; (c) consider and recommend any improvements that may be made to work practices to avoid or minimise adverse impact to the environment and to the community; (d) review the following documents required to be prepared under the terms of this consent, ensure they are consistent with requirements in or under this consent and if so, endorse them prior to submission to the Secretary (if required to be submitted to the Secretary) or prior to implementation (if not required to be submitted to the Secretary): (i) CEMP; (ii) OEMP; and (iii) the other plans and sub-plans required by these conditions, and referenced in conditions C1 and C3; (e) regularly monitor the implementation of all documents required to be prepared under the terms of this consent to ensure implementation is being carried out in accordance with what is stated in the document and the terms of this consent; (f) as may be requested by the Secretary, help plan, attend or undertake Department audits of the development including scoping audits, programming audits, briefings, and site visits, but not independent audits required under condition C18 of this consent; (g) if conflict arises between the Applicant and the community in relation to the environmental performance of the development, attempt to resolve the conflict, and if it cannot be resolved, notify the Secretary; (h) consider any minor amendments to be made to the CEMP, CEMP sub-plans and monitoring programs that comprise updating or are of an administrative nature, and are consistent with the terms of this consent and the CEMP, CEMP sub-plans and monitoring programs approved by the Secretary and, if satisfied such amendment is necessary, approve the amendment. This does not include any modifications to the terms of this consent; and (i) prepare and submit to the Secretary and other relevant regulatory agencies, for information, a monthly Environmental Representative Report detailing the ER's actions and decisions on matters for which the ER was responsible in the preceding month (or other timeframe agreed with the Secretary). The Environmental Representative Report must be submitted within seven (7) days following the end of each month for the duration of construction of the development, or as otherwise agreed with the Secretary. | Pre-construction | Early works and fill importation | Y | Y | Y | Y | Y | Ongoing | 14/02/2018 | The ER was appointed 14/02/2018 |

APPENDIX B COMPLIANCE TABLE – REVISED ENVIRONMENTAL MITIGATION MEASURES

| No. | Condition | Timing for Compliance | Works Area/Package (per Appendix 1, Table 4-8 of RT5) | | | | | | Compliance Status | Date of Compliance | Evidence |
|-----|--|-----------------------|---|-----------------------------------|---|---|--|---|-------------------|--------------------|---|
| | | | Warehousing & Freight Village - Pre-Construction and Construction | | | | | | | | |
| | | | Preconstruction | Site Infrastructure | Moorebank Avenue | Site Infrastructure | Warehousing / Site | Warehousing - & Freight Village Operations (Not part of this CTP) | | | |
| | | | Works period A – Early Works | Works Period B - Site preparation | Works Period C & E - Moorebank Avenue (realignment & upgrade) | Works Period D & G - Bulk earthworks, drainage, utilities, internal roadworks & landscaping | Works Period F & G- Warehouse construction & fit out, freight village construction | | | | |
| 0A | Pre-construction works would be undertaken subject to Environmental Work Method Statement (EWMS) (Appendix I of this RT5). Pre-construction works include the following: <ul style="list-style-type: none"> works within Works period A (pre-construction activities), including: <ul style="list-style-type: none"> establishment of site access points importation of fill for site preparation activities installation of site fencing remediation and UXO, EO or EOW management where required. survey; acquisitions; or building/ road dilapidation surveys; fencing; investigative drilling, excavation or salvage clearing any native vegetation within the Amended construction area , with the exception of the southern and eastern swales located outside of the SIMTA site establishment of site compounds and construction facilities installation of environmental mitigation measures utilities adjustment and relocation that do not present a significant risk to the environment, as determined by the Environmental Representative other activities determined by the Environmental Representative to have minimal environmental impact all works as described in Works period A in Section 4 of the EIS and Appendix I of this RT5. | Pre-construction | Y | N | N | N | N | N | Ongoing | 8/06/2018 | CEMP (Rev 4) dated 5 April 2018, approved by DP&E 8/06/2018 |
| 0B | The Construction Environmental Management Plan (CEMP), or equivalent, for the Amended Proposal would be based on the PCEMP (Appendix G of the EIS), and include the following preliminary management plans: <ul style="list-style-type: none"> Preliminary Construction Traffic Management Plan (PCTMP) (Appendix K of the EIS) Air Quality Management Plan (AQMP) (Appendix M of the EIS) Erosion and Sediment Control Plans (ESCPs) and Bulk Earthworks Plans (Appendix P of the EIS). As a minimum, the CEMP would include the following sub-plans: <ul style="list-style-type: none"> Construction Traffic Management Plan (CTMP) Construction Noise and Vibration Management Plan (CNVMP), prepared in accordance with the Interim Construction Noise Guideline Construction Air Quality Management Plan Flora and Fauna Management Plan A Soil and Water Management Plan (SWMP) and Erosion and Sediment Control Plan Contamination Management Plan Flood Emergency Response and Evacuation Plan UXO, EO, and EOW Management Plan Asbestos Management Plan Heritage (Indigenous and Non-Indigenous) Management Plan/s Bushfire Management Strategy Community Information and Awareness Strategy. | Construction | N | Y | Y | Y | Y | N | Compliant | 8/06/2018 | CEMP (Rev 4) dated 5 April 2018, approved by DP&E 8/06/2018 |
| 0C | The Operational Environmental Management Plan (OEMP), or equivalent, for the Amended Proposal would be based on the following preliminary management plans: <ul style="list-style-type: none"> Preliminary Operational Traffic Management Plan (POTMP) (Appendix K of the EIS) Air Quality Management Plan (Appendix M of the EIS) Stormwater Drainage Design Drawings (Appendix P of the EIS) As a minimum the OEMP would include the following sub-plans: <ul style="list-style-type: none"> Operational Traffic Management Plan (OTMP) Operational Noise and Vibration Management plan (ONVMP) Air Quality Management Plan Flora and Fauna Management Plan Flooding and Emergency Response Plan Emergency Response Plan in accordance with the requirements of Clause 153C of the POEO Act and the POEO (General) Regulation (Cl. 98B) Operational Hazard and Risk Management Plan Bushfire Management Strategy Community Information and Awareness Strategy. | Operation | N | N | N | N | N | Y | Ongoing | | |
| 0D | The construction and/or operation of the Amended Proposal may be delivered in a number of stages. If construction and/or operation is to be delivered in stages a Staging Report would be provided to the Secretary prior to commencement of the initial stage of construction and updated prior to the commencement of each stage as that stage is identified. | Construction | N | Y | Y | Y | Y | Y | N/A | N/A | N/A |
| 1A | A Construction Traffic Management Plan (CTMP) would be prepared, based on the PCTMP prepared as part of the EIS (refer to Appendix K of the EIS). The CTMP would detail the management controls to be implemented to avoid, minimise and mitigate impacts of construction of the Amended Proposal to traffic performance on the surrounding road network, pedestrian and cyclist access, and the amenity of the surrounding environment and would include the following key initiatives: <ul style="list-style-type: none"> Review of speed restrictions along Moorebank Avenue and additional signposting of speed limitations to reinforce reduced speed limits during construction of the Amended Proposal Restriction of haulage routes through signage and education to ensure, where possible, that construction vehicles do not travel through nearby residential areas to access the Amended construction area , in particular Moorebank (Anzac Road) or the Wattle Grove residential areas Inform local residents (in conjunction with the Community Information and Awareness Strategy) of the proposed construction activities and road access restrictions that the construction traffic must adhere to and establish communication protocols for community feedback on issues relating to construction vehicle driver behaviour and construction related matters Installation of specific warning signs on approach to, and at entrances to, the construction site to warn existing road users of entering and exiting construction traffic Establishing pedestrian exclusion zones and walking routes/crossing points which integrate within the existing pedestrian network Distribution of day warning notices to advise local road users of scheduled construction activities and associated traffic movements. Installation of appropriate traffic controls and warning signs for areas identified where potential safety risk issues exist The promotion of car-pooling for construction staff and other shared transport initiatives during the construction phase Management and coordination of the transportation of materials to maximise vehicle loads and therefore minimise vehicle movements Monitoring of traffic on Moorebank Avenue during peak periods to ensure that queuing at intersections does not impact on other road users Reducing, where reasonable and feasible, the volumes of construction vehicles travelling during peak periods, especially if the increase in traffic generated by construction activities impedes on the operation of Moorebank Avenue | Construction | N | Y | Y | Y | Y | N | Compliant | 15/06/2018 | CTAMP - Phase A (Rev 9) 15 June 2018 approved by the DP&E on 15/06/2018 |

| No. | Condition | Timing for Compliance | Works Area/Package (per Appendix 1, Table 4-8 of RT5) | | | | | | Compliance Status | Date of Compliance | Evidence |
|-----|---|--|---|-----------------------------------|---|---|--|---|-------------------|--------------------|---|
| | | | Warehousing & Freight Village - Pre-Construction and Construction | | | | | | | | |
| | | | Preconstruction | Site Infrastructure | Moorebank Avenue | Site Infrastructure | Warehousing / Site | Warehousing - & Freight Village Operations (Not part of this CTP) | | | |
| | | | Works period A – Early Works | Works Period B - Site preparation | Works Period C & E - Moorebank Avenue (realignment & upgrade) | Works Period D & G - Bulk earthworks, drainage, utilities, internal roadworks & landscaping | Works Period F & G- Warehouse construction & fit out, freight village construction | | | | |
| 1B | A road Safety Audit on Cambridge Avenue to be undertaken prior to the commencement of the construction of the Amended Proposal to identify the traffic safety risks and determine appropriate mitigations. | Construction | N | Y | Y | Y | Y | N | Compliant | 19/02/2018 | A Road Safety Audit dated 19/02/2018 has been undertaken. No corrective actions were identified |
| 1C | Moorebank Avenue would be upgraded for approximately 1.5 kilometres from approximately 35 metres south of the northern boundary of the MPE site to approximately 185 metres south of the southern MPE site boundary. The following intersections would also be upgraded as part of the Amended Proposal: <ul style="list-style-type: none"> Moorebank Avenue / MPE Stage 2 Moorebank Avenue / MPE Stage 1 northern access Moorebank Avenue / MPE Stage 1 central access Moorebank Avenue / MPE Stage 1 southern emergency access. The funding of these upgrades would be clarified through discussions with SIMTA, Roads and Maritime and Transport for NSW. | Construction | N | N | Y | N | N | Y | Ongoing | | Noted |
| 1D | It is intended that the POTMP would be further progressed and integrated into the OEMP for the Amended Proposal. Specifically, the following key aspects would be addressed in the OTMP: <ul style="list-style-type: none"> Heavy vehicle route management Safety and amenity of road users and public Congestion management on Moorebank Avenue Road user delay management Information signage, distance information and advance warning Driver code of conduct Incident management Traffic monitoring. | Operation | N | N | N | N | N | Y | Ongoing | | |
| 1E | Bicycle and end of trip facilities would be provided in accordance with the City of Sydney Section 3 – General Provisions. | Detailed design and Operation | N | N | N | N | Y | Y | Ongoing | | |
| 1F | Consultation would be undertaken with relevant bus provider(s) regarding the potential to extend the 901 bus service (or equivalent) and additional regular service bus stops with the aim of maximising public transport accessibility to, from and within the Amended operational area. | Operation | N | N | N | N | N | Y | Ongoing | | |
| 1G | Importation of fill to site during construction of the Amended Proposal is to not exceed a total of 22,000 m3 of material per day. This limit is to be further reduced by an amount equivalent to any fill being imported to the MPW Stage 2 Proposal (SSD 7709) on the same day such that the combined importation of fill to the Amended Proposal site and MPW site does not exceed 22,000 m3 on any given day. | Pre-construction & construction | Y | Y | Y | Y | Y | N | Ongoing | | |
| 2A | A Construction Noise and Vibration Management Plan (CNVMP), or equivalent, would be prepared for the Amended Proposal in accordance with the Interim Construction Noise Guideline (DECC, 2009) (or equivalent), and will include the following: <ul style="list-style-type: none"> Identification of nearby residences and other sensitive land uses Description of approved hours of work Description and identification of construction activities, including work areas, equipment and duration Description of what work practices (generic and specific) will be applied to minimise noise and vibration Consider the selection of plant and processes with reduced noise emissions A complaints handling process Noise and vibration monitoring procedures Overview of community consultation required for identified high impact works Induction and training will be provided to relevant staff and sub- contractors outlining their responsibilities with regard to noise Procedure for approval of any works undertaken outside of the following hours: - Standard hours of 07:00 am to 18:00 pm Monday to Friday, and 08:00am to 13:00 pm Saturday, - Out of hours (OOH) work periods: o OOH Period 1 is 6:00am – 7:00am weekdays; o OOH Period 2 is 6:00pm – 10:00pm weekdays o OOH Period 3 is 7:00am – 8:00am Saturday; and o OOH Period 4 is 1:00pm – 6:00pm Saturday. | Construction | N | Y | Y | Y | Y | N | Compliant | 15/06/2018 | CNVMP (Rev 5) - 8 June 2018, approved by DP&E on 15/06/2018. |
| 2B | Any works undertaken outside of the hours prescribed in mitigation measure 2A would be undertaken in consultation with relevant authorities. Works outside these hours that may be permitted would include: <ul style="list-style-type: none"> Any works which would not result in audible noise emissions at any nearby sensitive receptors. The delivery of oversized plant and/or structures that police or other authorities determine require special arrangements to transport along public roads Emergency work to avoid the loss of lives, property and/or to prevent environmental harm Maintenance and repair of public infrastructure where disruption to essential services and/or consideration of worker safety do not allow work within standard construction hours. Public infrastructure works that shorten the length of the project and are supported by noise-sensitive receivers. Construction works where it can be demonstrated and justified that these works are required to be undertaken outside of standard construction hours. Any other work as approved through the CNVMP. | Construction | N | Y | Y | Y | Y | N | Compliant | 15/06/2018 | CNVMP (Rev 5) - 8 June 2018, approved by DP&E on 15/06/2018. |
| 2D | In the event of any noise or vibration related complaint or adverse comment from the community, noise and ground vibration levels (as relevant) would be investigated. Remedial action would be implemented where feasible and reasonable. The procedures for managing complaints would be provided within the Community Information and Awareness Strategy. | Pre-construction, construction and operation | Y | Y | Y | Y | Y | Y | Compliant | 15/06/2018 | CNVMP (Rev 5) - 8 June 2018, approved by DP&E on 15/06/2018. |
| 2E | An Operational Noise Management Plan (ONMP) would be prepared which includes a framework for regular monitoring of operational noise. Monitoring would begin at the commencement of the operation of the Amended Proposal and would be conducted on an annual basis for up to 2 years (after commencement of operations of the Amended Proposal). | Operation | N | N | N | N | N | Y | Ongoing | | |
| 3A | The Air Quality Management Plan (Ramboll, 2016), included within Appendix M of the EIS, would be further progressed and incorporated into the CEMP for the Amended Proposal. Specifically, the following key aspects would be addressed in the CEMP: <ul style="list-style-type: none"> Procedures for controlling/managing dust Roles, responsibilities and reporting requirements Contingency measures for dust control where standard measures are deemed ineffective. | Construction | N | Y | Y | Y | Y | N | Compliant | 1/06/2018 | CAQMP (Rev 4) - 11 May 2018, approved by DP&E 1/06/2018 |
| 3B | The Air Quality Management Plan (Ramboll, 2016), included within Appendix M of the EIS would be further progressed and integrated into the OEMP for the Amended Proposal. In accordance with the Air Quality Management Plan the following key aspects would be addressed in the OEMP: <ul style="list-style-type: none"> Implementation and communication of anti-idling policy for trucks Complaints line for the community to report on excessive idling and smoky vehicles Procedures to reject excessively smoky trucks visiting the site based on visual inspection. | Operation | N | N | N | N | N | Y | Ongoing | | |

| No. | Condition | Timing for Compliance | Works Area/Package (per Appendix 1, Table 4-8 of R15) | | | | | | Compliance Status | Date of Compliance | Evidence |
|-----|--|-----------------------------------|---|-----------------------------------|---|---|---|---|-------------------|--------------------|---|
| | | | Warehousing & Freight Village - Pre-Construction and Construction | | | | | | | | |
| | | | Preconstruction | Site Infrastructure | Moorebank Avenue | Site Infrastructure | Warehousing / Site | Warehousing - & Freight Village Operations (Not part of this CTP) | | | |
| | | | Works period A – Early Works | Works Period B - Site preparation | Works Period C & E - Moorebank Avenue (realignment & upgrade) | Works Period D & G - Bulk earthworks, drainage, utilities, internal roadworks & landscaping | Works Period F & G - Warehouse construction & fit out, freight village construction | | | | |
| 4A | A Construction Flora and Fauna Management Plan (CFFMP) would be prepared as part of the CEMP for the Amended Proposal. Native vegetation clearing for southern and eastern swales located outside of the MPE site would not occur until the Flora and Fauna Management Plan is approved. This would include the following: <ul style="list-style-type: none"> • Clear identification of vegetation exclusion zones • Site induction procedure, including briefings regarding the local threatened flora and local fauna of the site and protocols to be undertaken if they are encountered • A pre-start up check for sheltering native fauna of all infrastructure, plant and equipment and/or during relocation of stored construction materials • Application of speed limits in areas adjacent to native vegetation | Construction | N | Y | Y | Y | Y | N | Compliant | 1/06/2018 | CFFMP (Rev 5) - 2 May 2018, was approved by the DP&E on 1/06/2018 |
| 4B | The threatened plant populations identified within the Boot lands (to the south) would be protected by a minimum 10 metre buffer between the edge of the area of occupied habitat and the Amended construction area. | Pre-construction and construction | Y | Y | Y | Y | Y | N | Ongoing | 1/06/2018 | CFFMP (Rev 5) - 2 May 2018, was approved by the DP&E on 1/06/2018 |
| 4C | Potential bat roosting locations in buildings to be demolished would be checked, as far as is practicable, by a qualified ecologist or wildlife carer for presence of bats prior to demolition. Any bats found would be relocated. | Construction | N | Y | N | N | N | N | Compliant | 1/06/2018 | CFFMP (Rev 5) - 2 May 2018, was approved by the DP&E on 1/06/2018 |
| 4D | A two-stage approach would be undertaken to clearing: <ul style="list-style-type: none"> • Remove non-hollow bearing trees at least 48 hours before habitat trees are removed. • Hollow bearing trees are to be knocked with an excavator bucket or other machinery to encourage fauna to evacuate the tree immediately prior to felling. • Felled trees must be left for a short period of time on the ground to give any fauna trapped in the trees an opportunity to escape before further processing of the trees. • Felled hollow bearing trees must be inspected by an ecologist as soon as possible (not longer than 2 hours after felling). | Construction | N | Y | Y | Y | N | N | Compliant | 1/06/2018 | CFFMP (Rev 5) - 2 May 2018, was approved by the DP&E on 1/06/2018 |
| 4E | Directional lighting will be used where lighting is required in construction areas to avoid impact on fauna. | Construction | N | Y | Y | Y | Y | N | Compliant | 1/06/2018 | CFFMP (Rev 5) - 2 May 2018, was approved by the DP&E on 1/06/2018 |
| 4F | Should any animal be injured, the relevant local wildlife rescue agency (e.g. WIRES) and/or veterinary surgery would be contacted as soon as practical. Until the animal can be cared for by a suitably qualified animal handler, if possible minimise stress to the animal and reduce the risk of further injury by: <ul style="list-style-type: none"> • Handling fauna with care and as little as possible. • Covering larger animals with a towel or blanket and placing in a large cardboard box. • Placing small animals in a cotton bag, tied at the top. • Keeping the animal in a quiet, warm, ventilated and dark location. | Pre-construction and construction | Y | Y | Y | Y | Y | Y | Compliant | 1/06/2018 | CFFMP (Rev 5) - 2 May 2018, was approved by the DP&E on 1/06/2018 |
| 4G | A Flora and Fauna Management Plan would be prepared as part of the OEMP for the Amended Proposal. This FFMP would focus on minimising impacts on biodiversity values on the adjacent Boot land. | Operation | N | N | N | N | N | Y | Ongoing | | |
| 5A | A Soil and Water Management Plan (SWMP) and Erosion and Sediment Control Plan (ESCP), or equivalent, would be incorporated into the CEMP for the construction of the Amended Proposal. The SWMP and ESCPs would be developed in accordance with the principles and requirements of Managing Urban Stormwater – Soils & Construction Volume 1 ('Blue Book') (Landcom, 2004) and Volume 2 (DECC 2008), and consider the Preliminary ESCPs (Appendix P of the EIS). The following aspects would be addressed within the SWMP and ESCPs: <ul style="list-style-type: none"> • Construction traffic restricted to delineated access tracks, and maintained until construction complete • Appropriate sediment and erosion controls to be implemented prior to soil disturbance • Stormwater management to avoid flow over exposed soils which may result in erosion and impacts to water quality • Location of stockpiles outside of flow paths on appropriate impermeable surfaces as well as outside of riparian corridors • Inspection of all permanent and temporary erosion and sedimentation control works prior to and post rainfall events and prior to closure of the construction area • Wheel wash or rumble grid systems installed at exit points to minimise dirt on roads. | Construction | N | Y | Y | Y | Y | N | Compliant | 8/06/2018 | The Construction Erosion and Sediment Control Plan (CERSEDP) (Rev 4) - 11 May 2018, included as Appendix A of CSWMP (Rev 6) - 7 June 2018, which was approved by the DP&E on 8/06/2018. |
| 5B | To minimise potential flood impacts as a result of construction of the Amended Proposal, the following measures would be implemented and documented in the SWMP: <ul style="list-style-type: none"> • The existing site catchment and sub-catchment boundaries would be maintained as far as practicable • To the extent practicable, site imperviousness and grades should be limited to the extent of existing imperviousness and grades under existing development conditions. | Construction | N | Y | Y | Y | Y | N | Compliant | 8/06/2018 | SWMP (Rev 6) - 7 June 2018 was approved by the DP&E on 8/06/2018 |
| 5C | A Flood Emergency Response and Evacuation Plan, or equivalent, would be prepared and implemented for the construction phase of the Amended Proposal to allow work sites to be safely evacuated and secured in advance of flooding occurring at the Amended construction area. | Construction | N | Y | Y | Y | Y | N | Compliant | 1/06/2018 | FERP (Rev 5) - 16 April 2018, was approved by the DP&E on 1/06/2018. |
| 5D | Stormwater quality improvement devices management measures would be designed and installed on site as presented in the Stormwater and Flooding Environmental Assessment (Appendix P of the EIS), including: <ul style="list-style-type: none"> • Gross pollutant traps (GPTs) at Section 6.2.1 • Rain gardens in the base of the OSD channels, as shown in Figure 6-1 of Appendix P of the EIS. Stormwater quality improvement devices would be designed to meet the performance targets identified in Georges River Estuary CZMP. | Detailed design and construction | N | Y | Y | Y | Y | N | Compliant | 8/06/2018 | CSWMP |
| 5E | A water quality monitoring program for the operational phase of the Amended Proposal would be prepared as part of the OEMP for the Amended Proposal and would detail: <ul style="list-style-type: none"> • The frequency and duration of sampling • Background water quality conditions • Sampling methodology • Reporting requirements Water quality monitoring would be undertaken for both Anzac Creek and the Georges River and would include the following parameters: <ul style="list-style-type: none"> • Total suspended solids • Total phosphorous • Total nitrogen • Oils and grease. | Operation | N | N | N | N | N | Y | Ongoing | | |
| 5F | A Flood Emergency Response Plan (FERP) would be developed for the operational phase of the Amended Proposal. The FERP would take into consideration, site flooding and broader flood emergency response plans for the Georges River and Anzac Creek floodplains and Moorebank area. The FERP would also include the identification of an area of safe refuge within the Amended Proposal site that would allow people to wait until hazardous flows have receded and safe evacuation is possible. | Operation | N | N | N | N | N | Y | Ongoing | | |
| 6A | Excavated material would be reused on site where possible. Any excavated material that requires disposal would be subject to waste classification under the Waste Classification Guidelines 2014 (NSW EPA, 2014) and would be disposed of at an appropriately licensed facility. | Construction | N | Y | Y | Y | Y | N | Compliant | 1/06/2018 | CDWMP (Rev 6) - 27 April 2018, approved by the DP&E on 1/06/2018 |

| No. | Condition | Timing for Compliance | Works Area/Package (per Appendix 1, Table 4-8 of RT5) | | | | | | Compliance Status | Date of Compliance | Evidence |
|-----|--|-----------------------------------|---|-----------------------------------|---|---|--|---|-------------------|--------------------|--|
| | | | Warehousing & Freight Village - Pre-Construction and Construction | | | | | | | | |
| | | | Preconstruction | Site Infrastructure | Moorebank Avenue | Site Infrastructure | Warehousing / Site | Warehousing - & Freight Village Operations (Not part of this CTP) | | | |
| | | | Works period A – Early Works | Works Period B - Site preparation | Works Period C & E - Moorebank Avenue (realignment & upgrade) | Works Period D & G - Bulk earthworks, drainage, utilities, internal roadworks & landscaping | Works Period F & G- Warehouse construction & fit out, freight village construction | | | | |
| 6B | Stockpile sites established during construction are to be managed in accordance with stockpile management principles set out in Appendix G of this RT5. | Pre-construction & construction | Y | Y | Y | Y | Y | N | Compliant | 8/06/2018 | SWMP (Rev 6) - 7 June 2018 was approved by the DP&E on 8/06/2018 Construction Spoil Management Plan (Rev 4) - 5 April 2018, approved by the DP&E on 8/06/2018 |
| 6C | A Contamination Management Plan (CMP) (or equivalent) would be prepared and included within the CEMP for the Amended Proposal. The CMP would be prepared in consideration of the outcomes of the Environmental Management Plan (GHD, 2016) and Site Audit Statement and Site Audit Report (JBS&G, 2016) and would contain procedures on the following: <ul style="list-style-type: none"> Handling, stockpiling and assessing potentially contaminated materials encountered during the development works. A management tracking system for excavated potentially contaminated materials to ensure the proper management material movements at the Amended construction area, particularly during excavation Assessment, classification and disposal of waste in accordance with relevant legislation A contingency plan for unexpected contaminated materials (unexpected finds protocol), such as materials that are odorous, stained or containing anthropogenic materials, that may be encountered during construction. | Construction | N | Y | Y | Y | Y | N | Compliant | 30/05/2018 | A staged CMP was approved 30/05/18 |
| 6D | A site-wide UXO, EO, and EOW Management Plan (or equivalent) would be developed for the Amended construction area. This plan would be included within the CEMP and address the unexpected discovery of UXO, EO or EOW during construction. | Construction | N | Y | Y | Y | Y | N | Compliant | 30/05/2018 | A staged CMP was approved 30/05/18 |
| 6E | An Emergency Response Plan would be prepared and implemented. The plan would meet the requirements of Clause 153C of the POEO Act and the POEO (General) Regulation (Cl. 98B) and specify the procedure to be followed in the event of a spill, including the notification requirements and use of absorbent material to contain the spill. A spill kit would be provided on the Amended operational area at all times. | Operation | N | N | N | N | N | Y | Ongoing | | |
| 6F | In order to accept fill material onto site, the following will be undertaken: <ul style="list-style-type: none"> Material characterisation reports/certification showing that the material being supplied is VENM/ENM must be provided. Each truck entry will be visually checked and documented to confirm that only approved materials that are consistent with the environmental approvals are allowed to enter the site. Only fully tarped loads are to be accepted by the gatekeeper. Environmental assurance of imported fill material will be conducted to confirm that the materials comply with the NSW EPA Waste Classification Guidelines and the Earthworks Specification for the MPW site. The frequency of assurance testing will be as nominated by the Environmental assessor/auditor. | Pre-construction & construction | Y | Y | Y | Y | Y | N | Compliant | 8/06/2018 | Construction Spoil Management Plan (Rev 4) - 5 April 2018, approved by the DP&E on 8/06/2018 |
| 6G | The CEMP would include an Earthworks Specification, which would include details on earthworks material criteria, handling and placement requirements, embankment and cutting formation (including foundation, batter and benching requirements), unsuitable material and bridging layer requirements, conformance testing methods and acceptance criteria (e.g. for material acceptance and compaction control). | Construction | N | Y | Y | Y | Y | N | Compliant | 8/06/2018 | CEMP (Rev 4) dated 5 April 2018, approved by DP&E 8/06/2018 |
| 7A | Hazards associated with operation of the Amended Proposal would be identified through a Hazard and Operability Study (HAZOP), which would be undertaken as part of the detailed design. | Operation | N | N | N | N | N | Y | Ongoing | | |
| 7B | The following measures would be included in the CEMP (or equivalent) to minimise hazards and risks: <ul style="list-style-type: none"> Construction works, including the storage, handling and use of hazardous construction materials would be undertaken in accordance with the provisions of the Work Health and Safety Act 2011 and Work Health and Safety Regulation 2011. All demolition activities would be undertaken in accordance with Australian Standard AS2601-1991 – Demolition of Structures Safe operational access and egress for emergency service personnel and workers will be provided at all times, and specified in the CEMP. Regular maintenance and inspection of all environmental and safety protection controls would be undertaken. | Construction | N | Y | Y | Y | Y | N | Compliant | 8/06/2018 | CEMP (Rev 4) dated 5 April 2018, approved by DP&E 8/06/2018 |
| 7C | An Asbestos Management Plan would be prepared for the Amended Proposal in accordance with the Code of Practice: How to Manage and Control of Asbestos in the Workplace (WorkCover NSW, 2011). The plan would include, but not be limited to: <ul style="list-style-type: none"> Identification of potential (suspected or confirmed) asbestos areas an outline of how asbestos risks would be controlled the identification of each person with responsibilities and details of their responsibilities under this plan Reference the asbestos register and risk assessment, which would also be prepared prior to construction being undertaken. | Construction | N | Y | N | N | N | N | Compliant | 30/05/2018 | A staged CMP was approved 30/05/18 |
| 7D | All asbestos removal works, including the demolition of the eight structures identified as containing asbestos (refer to Figure 14-1 of the EIS) will be undertaken in accordance with the Environmental Management Plan (GHD, 2016) and the following: <ul style="list-style-type: none"> The Code of Practice for the Safe Removal of Asbestos (NOHSC, 2005) Code of Practice: How to Safely Remove Asbestos (WorkCover NSW, 2011) Asbestos removal would be carried out by an appropriately licensed asbestos removalist. The licensing requirements for asbestos removal are specified in the Code of Practice How to Safely Remove Asbestos (WorkCover NSW, 2011). | Construction | N | Y | N | Y | N | N | Compliant | 30/05/2018 | A staged CMP was approved 30/05/18 |
| 7E | Dangerous goods entering or leaving the Stage 2 site must be notified in advance in accordance with the International Maritime Organisation (IMO) and regulations pertaining to the International Convention for the Safety of Life at Sea (SOLAS). | Operation | N | N | N | N | N | Y | Ongoing | | |
| 7F | Handling of dangerous goods including unpacking from containers and storage within warehouses on the Amended operational area would be undertaken in accordance with the Storage and Handling of Dangerous Goods Code of Practice (WorkCover NSW, 2005). | Operation | N | N | N | N | N | Y | Ongoing | | |
| 7G | Staff involved in the transport and handling of dangerous goods within the Amended Proposal site would receive training regarding the contents of the dangerous goods provisions and their roles and responsibilities. All training would be recorded and maintained in accordance with the appropriate competent authority (SafeWork NSW). | Operation | N | N | N | N | N | Y | Ongoing | | |
| 7H | Design, installation and maintenance of gas reticulation infrastructure would be undertaken in accordance with Australian Standard AS 2944-1 (2007): Plastic pipes and fittings for gas reticulation – Polyamide pipes and Australian Standard AS 2944-2 (2007): plastic pipes and fittings for gas reticulation – Polyamide fittings. | Operation | N | N | N | N | N | Y | Ongoing | | |
| 7I | Storage of flammable/combustible liquids within the Amended operational area would be carried out in accordance with Australian Standard AS 1940: The Storage and Handling of Flammable and Combustible Liquids. Secondary containment measures would be implemented in a location away from waterways and drainage paths/infrastructure. | Detailed design / Operation | N | N | N | N | N | Y | Ongoing | | |
| 7J | An Operational Hazard and Risk Management Plan would be developed for the Amended operational area and be implemented as part of the OEMP for the Amended Proposal. This plan would be reviewed regularly and updated should goods entering the site change. As a minimum, the plan would adopt the requirements of the Code of Practice for Storage and Handling of Dangerous Goods (WorkCover NSW, 2005). | Operation | N | N | N | N | N | Y | Ongoing | | |
| 7K | Appropriate testing, alarm systems and work, health and safety (WHS) precautions would be implemented for the safety of personnel and infrastructure. | Detailed design and Operation | N | N | N | N | N | Y | Ongoing | | |
| 7L | No hazardous or regulated wastes would be disposed of on site. | Pre-construction and construction | Y | Y | Y | Y | Y | Y | Compliant | 1/06/2018 | CDWMP (Rev 6) - 27 April 2018, approved by the DP&E on 1/06/2018 |

| No. | Condition | Timing for Compliance | Works Area/Package (per Appendix 1, Table 4-8 of R15) | | | | | | Compliance Status | Date of Compliance | Evidence |
|-----|---|--|---|--|---|--|--|---|-------------------|--------------------|---|
| | | | Warehousing & Freight Village - Pre-Construction and Construction | | | | | | | | |
| | | | Preconstruction Works period A – Early Works | Site Infrastructure Works Period B - Site preparation | Moorebank Avenue Works Period C & E - Moorebank Avenue (realignment & upgrade) | Site Infrastructure Works Period D & G - Bulk earthworks, drainage, utilities, internal roadworks & landscaping | Warehousing / Site Works Period F & G- Warehouse construction & fit out, freight village construction | Warehousing - & Freight Village Operations (Not part of this CTP) | | | |
| 8A | The following mitigation measures would be implemented, where reasonable and feasible, to minimise the visual impacts of the Amended Proposal: <ul style="list-style-type: none"> Existing vegetation around the perimeter of construction sites would be retained The early implementation of landscape planting would be considered in order to provide visual screening during the construction of the Amended Proposal Elements within construction sites would be located to minimise visual impacts, e.g. setting back large equipment from site boundaries Construction lighting, on both ancillary facilities and plant and equipment, would be designed and located to minimise the effects of light spill on surrounding sensitive receivers, including residential areas and the proposed conservation area Design of site hoardings would consider the use of artwork or project information Regular maintenance would be undertaken of site hoardings and perimeter areas including the prompt removal of graffiti Re-vegetation/landscaping would be undertaken progressively Where required for construction works, cut-off and directed lighting would be used and lighting location considered to ensure glare and light spill are minimised. | Pre-construction & construction | Y | Y | Y | Y | Y | N | Compliant | 8/06/2018 | CEMP (Rev 4) dated 5 April 2018, approved by DP&E 8/06/2018 |
| 8B | The following mitigation measures would be implemented, where reasonable and feasible, for the landscaping of the Amended Proposal: <ul style="list-style-type: none"> Use of native shrubs and ground covers to form a screening barrier when mature. A landscaping corridor of screening vegetation to provide informal street character along Moorebank Avenue. Use of local species as understory planting to support and enhance local habitat values Use of seeds collected within the local area for planting to reinforce the genetic integrity of the region, where possible. | Construction & operation | N | N | N | Y | N | N | Compliant | 8/06/2018 | CFMPP (Rev 5) - 2 May 2018, was approved by the DP&E on 1/06/2018 |
| 8C | Light for the Amended Proposal would be designed to minimise any direct light spill and would comply with the requirements of Australian Standard AS4282-1997- Control of the Obtrusive Effects of Outdoor Lighting. | Detailed design and Operation | N | N | N | N | N | Y | Ongoing | | |
| 9A | An exclusion zone would be provided around previously identified MPE Isolated Artefacts 2, 3 and 4 (refer to Figure 16-2) to avoid potential disturbance of these artefacts during construction of the Amended Proposal. | Pre-construction & construction | Y | Y | N | Y | Y | N | N/A | | |
| 9B | Management of Aboriginal heritage would be included in the CEMP for the Amended Proposal. Information within the CEMP would include: <ul style="list-style-type: none"> A summary of the findings of the Aboriginal Heritage Impact Assessment Report (provided at Appendix 5 of the EIS) Guidance on unexpected archaeological and cultural finds (including human remains). | Construction | N | Y | Y | Y | Y | N | Compliant | 15/06/2018 | CHMP (Rev 6) - 12 June 2018, approved by the DP&E on 15/06/2018 |
| 9C | All relevant personnel and contractors involved in the design and construction of the Amended Proposal would be advised of the relevant heritage considerations, legislative requirements and recommendations in the Aboriginal Heritage Impact Assessment Report (provided at Appendix 5 of the EIS). | Detailed design, Pre-construction & construction | Y | Y | Y | Y | Y | N | Compliant | 15/06/2018 | CHMP (Rev 6) - 12 June 2018, approved by the DP&E on 15/06/2018 |
| 10A | A Heritage Management Plan in adherence to NSW Heritage Council guidelines would be prepared as part of the CEMP for the Amended Proposal. | Construction | N | Y | Y | Y | Y | N | Compliant | 15/06/2018 | CHMP (Rev 6) - 12 June 2018, approved by the DP&E on 15/06/2018 |
| 10B | Archaeological monitoring and recording would be conducted at PADs V and W, which have the potential to contain archaeological remains of local significance. Monitoring and recording would be undertaken by a suitably qualified archaeologist, who would assess the likely significance of any archaeological deposits encountered, and provide advice regarding appropriate further action. If highly significant remains were identified during monitoring, it would be appropriate to conduct further monitoring for additional sites of former structures or test excavations. | Construction | Y | Y | Y | Y | Y | N | Compliant | 15/06/2018 | CHMP (Rev 6) - 12 June 2018, approved by the DP&E on 15/06/2018 |
| 10C | A Heritage Interpretation Strategy should be prepared prior to the commencement of construction, outlining appropriate interpretive measure for the Amended construction area in the context of the MPE site as a whole. | Prior to commencement of construction | N | Y | Y | Y | Y | N | Compliant | 15/06/2018 | CHMP (Rev 6) - 12 June 2018, approved by the DP&E on 15/06/2018 |
| 10D | If unexpected finds are located during works an archaeological consultant would be engaged to assess the significance of the finds and the NSW Heritage Council notified. | Pre-construction & construction | Y | Y | Y | Y | Y | N | Compliant | 15/06/2018 | CHMP (Rev 6) - 12 June 2018, approved by the DP&E on 15/06/2018 |
| 11A | Energy efficiency design aspects would be investigated, where practicable as part of the detailed design process in order to reduce energy and fuel consumption. | Detailed design | N | N | N | N | N | Y | Ongoing | | |
| 11B | Project planning would be undertaken to ensure that the site vehicle movements and construction activities are efficient, to avoid double handling of materials and unnecessary fuel use where possible. | Pre-construction & construction | Y | Y | Y | Y | Y | N | Compliant | 15/06/2018 | CHMP (Rev 6) - 12 June 2018, approved by the DP&E on 15/06/2018 |
| 11C | Fuel efficiency of the construction plant/equipment will be assessed prior to selection, and where practical, equipment with the highest fuel efficiency and which uses lower GHG intensive fuel (e.g. biodiesel) will be used. | Construction | Y | Y | Y | Y | Y | N | Ongoing | | Noted |
| 11D | Consideration will be given to material substitution where reasonable and feasible to reduce embodied energy of construction materials. | Detailed design and construction | N | Y | Y | Y | Y | N | Ongoing | | Noted |
| 11E | Where possible locally sourced materials will be used to reduce GHG emissions associated with transport during construction. | Construction | N | Y | Y | Y | Y | N | Ongoing | | Noted |
| 11F | Waste would be diverted from landfill, including diversion of spoil, construction and demolition waste, and commercial and industrial waste, where reasonable and feasible. The management of waste would be considered as part of the preparation of the CEMP for the Amended Proposal, detailing the appropriate procedures for waste management. | Construction | Y | Y | Y | Y | Y | N | Compliant | 1/06/2018 | CDWMP (Rev 6) - 27 April 2018, approved by the DP&E on 1/06/2018 |
| 11G | Fuel efficiency of the operation plant/equipment will be assessed prior to selection, and where practical, equipment with the highest fuel efficiency and which uses lower GHG intensive fuel (e.g. biodiesel) will be used during operation. | Operation | N | N | N | N | N | Y | Ongoing | | |
| 11H | Implement adaptation measures to address medium and high rated risks detailed in the climate change risk assessment presented in the Greenhouse Gas (GHG) and Climate Change Risk Assessment (Appendix V of the EIS). | Detailed design and operation | N | N | N | N | N | Y | Ongoing | | |
| 12A | Measures to mitigate the effect of the construction waste streams would be incorporated into the Amended Proposal's CEMP, including the following information: <ul style="list-style-type: none"> Avoidance and reuse of material will have priority over recycling Recycling will have priority over disposal Earth excavated from the site will be used for fill material and landscaping where feasible If possible concrete components will be crushed and reused onsite, with the remainder sent to a recycling facility Waste generation will be minimised by ordering the correct quantity of materials Selection of materials which maximise recycled content, while having low embodied water and energy use Selection of materials which maximise durability and lifespan. The following procedures and protocols will be considered within the CEMP regarding waste management: <ul style="list-style-type: none"> Characterisation of construction waste streams Management of any identified hazardous waste streams Procedures to manage construction waste streams, including handling, storage, classification, quantification, identification and tracking Mitigation measures for avoidance and minimisation of waste materials Procedures and targets for reuse and recycling of waste materials. Inclusion of the waste management strategies included in the Concept Plan Statement of Commitments for construction waste management. | Construction | Y | Y | Y | Y | Y | N | Compliant | 1/06/2018 | CDWMP (Rev 6) - 27 April 2018, approved by the DP&E on 1/06/2018 |

| No. | Condition | Timing for Compliance | Works Area/Package (per Appendix 1, Table 4-8 of RT5) | | | | | | Compliance Status | Date of Compliance | Evidence |
|-----|---|-----------------------|---|--|---|--|--|---|-------------------|--------------------|--|
| | | | Warehousing & Freight Village - Pre-Construction and Construction | | | | | | | | |
| | | | Preconstruction Works period A – Early Works | Site Infrastructure Works Period B - Site preparation | Moorebank Avenue Works Period C & E - Moorebank Avenue (realignment & upgrade) | Site Infrastructure Works Period D & G - Bulk earthworks, drainage, utilities, internal roadworks & landscaping | Warehousing / Site Works Period F & G- Warehouse construction & fit out, freight village construction | Warehousing - & Freight Village Operations (Not part of this CTP) | | | |
| 12B | Measures to mitigate the effect of the operational waste streams would be incorporated into the Amended Proposal's OEMP, including the following information: <ul style="list-style-type: none"> Addressing waste management requirements and goals in staff inductions Providing staff access to documentation outlining the facility's waste management requirements Appropriate areas shall be provided for the storage of waste and recyclable material including: <ul style="list-style-type: none"> Locating recycling bins in kitchen areas beside general waste bins to prevent contamination of recycling Positioning paper recycling bins close to printer / photocopying equipment Establishing bays or containers for recyclable waste generated through de-stuffing Minimising general waste bins at desks but providing adequate container and paper recycling to encourage sorting of recyclables Ensuring warehouse tenants are providing adequate bin storage for the expected quantity of waste Standard signage on how to use the waste management system and what materials are acceptable in the recycling will be posted in all waste collection and storage areas Waste management planning incorporating principles of the waste hierarchy All domestic waste shall be collected regularly and disposed of at licensed facilities By ensuring bins are placed in the correct location and access ways are clear waste collection vehicles will be able to service the development efficiently and effectively An education programme and on-going monitoring will be implemented for training personnel to properly sort and transport waste into the right components and destinations Sewage waste will be discharged to Sydney Water sewerage infrastructure in accordance with Sydney Water requirements Trade waste will be discharged to the sewer through a trade waste agreement with Sydney Water Inclusion of the waste management strategies included in the Concept Plan Statement of Commitments for operational waste management. | Operation | N | N | N | N | N | Y | Ongoing | | |
| 13A | A bushfire management strategy, or equivalent, will be prepared as part of the CEMP for the Amended Proposal. The strategy will include: <ul style="list-style-type: none"> Emergency response plans and procedures Restrictions on activities (namely hot works) that cannot be undertaken on total fire ban days within areas of high Bushfire Hazard Rating, unless otherwise advised by the NSW Rural Fire Service. All construction site offices and temporary buildings will be located outside buffer areas to ensure minimum setbacks of 10 m. All construction site offices will be accessible via access roads suitable for firefighting appliances similar to NSW Rural Fire Service category 1 tankers. | Construction | N | Y | Y | Y | Y | N | Compliant | 15/06/2018 | The BEEP (rev 3) dated 14 June 2018 is included as Appendix O of CEMP (Rev 4) dated 5 April 2018, approved by DP&E 8/06/2018 A Bushfire Management Plan (14 June) has been prepared and approved by DP&E. |
| 13B | A bushfire management strategy, or equivalent, would be prepared as part of the OEMP for the Amended Proposal. In particular, the strategy would ensure management of landscaped areas within the Stage 2 site would be undertaken to maintain minimum dry fuel loads. | Operation | N | N | N | N | N | Y | Ongoing | | |
| 14A | As relevant, further assessment of services demand, infrastructure requirements and augmentation works, in consultation with relevant infrastructure and service providers would be undertaken. | Detailed design | N | N | N | N | N | Y | Ongoing | | |
| 15A | A community information and awareness strategy would be included in the CEMP and would outline measures to maintain communication with the community and all relevant stakeholders throughout the construction process of the Amended Proposal. | Construction | N | Y | Y | Y | Y | N | Compliant | 1/06/2018 | CCS (Rev 4) dated 7 May 2018 was approved by DP&E on 1/06/2018 |
| 15B | The Operational Environmental Management Plan (OEMP) would include measures to engage with stakeholders and to manage and respond to feedback received during the operation of the Amended Proposal. | Operation | N | N | N | N | N | Y | Ongoing | | |

