



Construction Heritage Management Plan

Moorebank Precinct East Stage 1 – RALP No. 1

Project number:	N01031
Document number:	EN-PLN-0021
Revision date:	30 November 2017
Revision:	01

Document Approval

Rev.	Date	Prepared by	Reviewed by	Approved by	Remarks
A	3 Mar 2016	P Chin	S Pathammavong T Doczy	T Pruscino	Initial draft
B	26 Apr 2016	A Smith	S Pathammavong	T Pruscino	Update to address SIMTA comments
C	17 May 2016	S Pathammavong	A O'Sullivan	R Styles	Archaeologist comments addressed and for Aboriginal stakeholder consultation
D	12 Jul 2016	S Pathammavong	A O'Sullivan	R Styles	For SIMTA's second review
E	21 Dec 2016	A Major	S Pathammavong	R Styles	Updated for final CoA and for consultation
F	7 Feb 2017	A Major	S Pathammavong	R Styles	For submission to DP&E
G	29 Mar 2017	A Major	A Noonan	R Styles	Response to DP&E
H/00	6 Apr 2017	A Major	A Noonan	A Massoud	Final DP&E submission – Approved by DP&E
01	30 Nov 2017	A Major	A Noonan	A Massoud	6 Monthly Review
Signature:					

Details of Revision Amendments and Authorship

Document Control

The Project Director is responsible for ensuring that this plan is reviewed and approved. The Environment Manager is responsible for updating this plan to reflect changes to legal and other requirements, as required.

Amendments

Any revisions or amendments must be approved by the Project Director before being distributed / implemented.

Revision Details

Revision	Details
A	Initial draft for SIMTA review
B	Updated to address SIMTA comments
C	Updated to address Archaeologist comments and for Aboriginal stakeholder consultation
D	Aboriginal stakeholder comments addressed and for SIMTA's second review
E	Updated for final CoA and for consultation
F	For submission to DP&E. Updated to address stakeholder consultation and ER review
G	Updated in response to comments from DP&E
H/00	Final updated for submission to DP&E Approved by DP&E
01	6 Monthly Review

Document Authors, Reviewers and Qualifications

This document has been prepared and reviewed by appropriately qualified professionals as detailed below.

Author's Name	Qualifications
Philip Chin	Master of Science (Chemical Oceanography), Florida State University, USA Bachelor of Science (Chemistry), Victoria University of Wellington, NZ Graduate Certificate in Management, Australian Graduate School of Management
Andrew Smith	Master of Environmental Management, University of New South Wales Bachelor of Science, University of Sydney Graduate Diploma Environmental Science, University of Sydney
Sam Pathammavong	Master of Environmental Engineering Management, University of Technology Sydney Bachelor of Engineering (Civil & Environmental), University of Technology Sydney
Tracey Doczy	Bachelor of Environmental Science, University of Newcastle Master of Environmental and Business Management, University of Newcastle
Ashley O'Sullivan	Bachelor of Arts (Archaeology and Anthropology) (Hons), James Cook University Member of Australian Archaeological Association
Alex Major	Master of Environmental Science, University of Sydney Bachelor of Science, University of Sydney

Author's Name	Qualifications
Adam Noonan	Masters of Applied Science in Environmental Science, Sydney University Post Graduate Diploma in Safety Science, University of New South Wales Bachelor of Business Administration majoring in Environmental Resource Management, Macquarie University

Contents

Construction Heritage Management Plan	6
1. Overview	6
1.1 Purpose.....	6
1.2 Project Scope.....	6
1.3 Objectives	7
1.4 Definitions	7
1.5 Interactions with Other Management Plans	7
2. Legal and Other Requirements	9
2.1 Relevant Legislation.....	9
2.2 Guidelines	9
2.3 Additional Permits and Licences	9
3. Consultation and Stakeholders.....	10
3.1 Consultation on this Plan	10
3.2 Ongoing Indigenous Heritage Consultation throughout Construction	14
3.3 Ongoing Non-Indigenous Heritage Consultation throughout Construction.....	14
4. Roles and Responsibilities	15
4.1 Key Personnel.....	15
4.2 Training.....	15
5. Existing Environment.....	16
5.1 Identified Indigenous Cultural and Archaeological Heritage.....	16
5.2 Identified Non-Indigenous Heritage.....	19
6. Aspects and Potential Impacts.....	21
6.1 Activities, Hazards and Risks.....	21
6.2 Potential Indigenous Heritage Impacts.....	21
6.3 Potential Non-Indigenous Heritage Impacts.....	22
6.4 Cumulative Impacts.....	23
7. Management, Controls and Mitigation Measures	25
7.1 Heritage Management.....	25
7.2 Mitigation Measures	26
8. Review and Improvement	29
8.1 Monitoring	29
8.2 Reporting	29
8.3 Auditing.....	29
8.4 Continuous Improvement.....	29
Attachments	32
Attachment A: Compliance Matrix	32
Contract Clauses.....	32
Conditions of Project Environmental Approvals.....	32
Attachment B: Glossary.....	43
Attachment C: Stakeholder Consultation Responses.....	45
Attachment D: Unexpected Heritage Finds Procedure	46
Attachment E: Heritage Management Procedure	47

THIS PAGE LEFT BLANK INTENTIONALLY

Construction Heritage Management Plan

1. Overview

1.1 Purpose

This Construction Heritage Management Plan (CHMP) addresses heritage management on Sydney Intermodal Terminal Alliance's (SIMTA) Moorebank Intermodal Terminal Development Stage 1 – Rail Access Land Package (RALP) No. 1 (the Project) and the management of impacts to the environment and community.

This CHMP addresses the following key requirements:

- Conditions of Approval under SSD-6766 SIMTA Intermodal Terminal Facility – Stage 1 (NSW)
- Stage 1 EIS (including Framework CEMP)
- Stage 1 Response to Submissions Report (including Final Compilation of Mitigation Measures)
- Conditions of Approval under MP10_0193 SIMTA Moorebank Intermodal Terminal Facility – Concept Plan (NSW)
- NSW Concept Plan EIS
- NSW Concept Plan Submissions Report (including Revised Statement of Commitments)
- Conditions of Approval under EPBC 2011/6229 SIMTA Intermodal Terminal (Commonwealth)
- Commonwealth Concept Plan EIS (including Framework CEMP)
- Other applicable legislative obligations
- Address the requirements of the EPL.

1.2 Project Scope

SIMTA's Moorebank Intermodal Terminal Development involves the construction and operation of the necessary infrastructure to support a container freight road volume of 250,000 twenty-foot equivalent units (TEU).

CPB Contractors' scope of work specifically applies to Stage 1 – RALP No. 1 which consists of a 2.8 kilometre rail line, along with its required infrastructure, to connect the Import-Export Terminal and Interstate Terminals to the Southern Sydney Freight Line (SSFL), and capable of accommodating trains up to 1,800m in length.

The SIMTA site is located in the Liverpool local government area. It is 27 kilometres south-west of the Sydney Central Business District (CBD), 26 kilometres west of Port Botany, 16 kilometres south of the Parramatta CBD, 0.6 kilometres from the M5 South-West Motorway, five kilometres east of the M5 South-West Motorway / Westlink M7 Motorway Interchange and connecting to the main north–south rail line via the Southern Sydney Freight Line.

The Moorebank Intermodal Terminal Development – RALP No. 1 is the first package of Stage 1 of the overall project and its construction will include:

- A northbound connection and a southbound connection to the SSFL
- Civil and earthworks, including remediation works and benching
- A viaduct over a section of the Glenfield Waste Services landfill site
- A bridge over the Georges River
- A culvert crossing over Anzac Creek
- Installation of new Moorebank Avenue overbridge
- Service relocation and protection
- Track work
- Signalling systems
- Security fencing

An indicative map of the Project is provided in Figure 1 below.

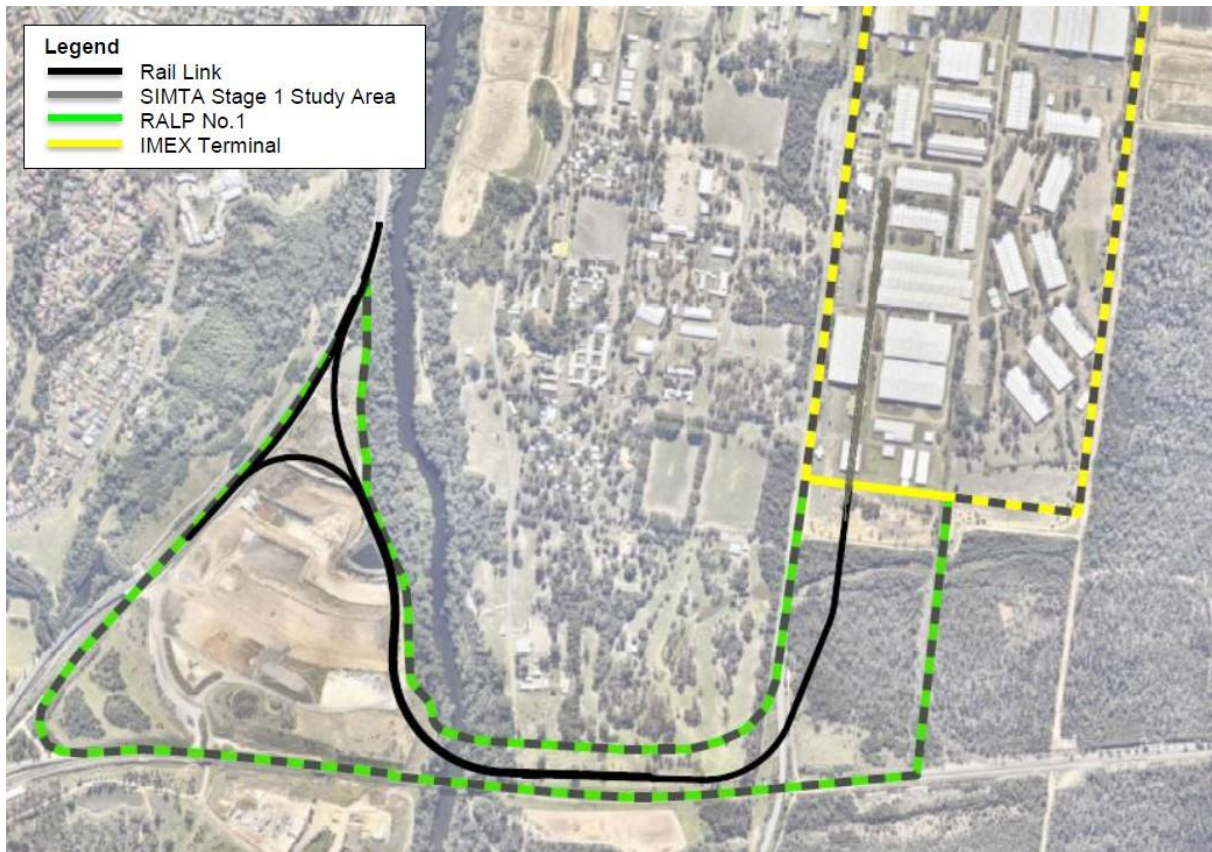


Figure 1: Indicative Project Map

1.3 Objectives

The following heritage management objectives will apply to the construction of the Project:

- Minimise impacts on items or places of heritage value
- Avoid accidental impacts on heritage items through implementation of a procedure to identify and manage unexpected heritage finds
- Maximise the Project personnel's awareness of indigenous and non-indigenous heritage.

1.4 Definitions

Definitions for terms used in this plan are contained in the Glossary in Attachment B.

1.5 Interactions with Other Management Plans

This CHMP is part of the Construction Environmental Management Plan (CEMP). Figure 2 below sets out interactions of this CHMP with the other management plans implemented on the Project.

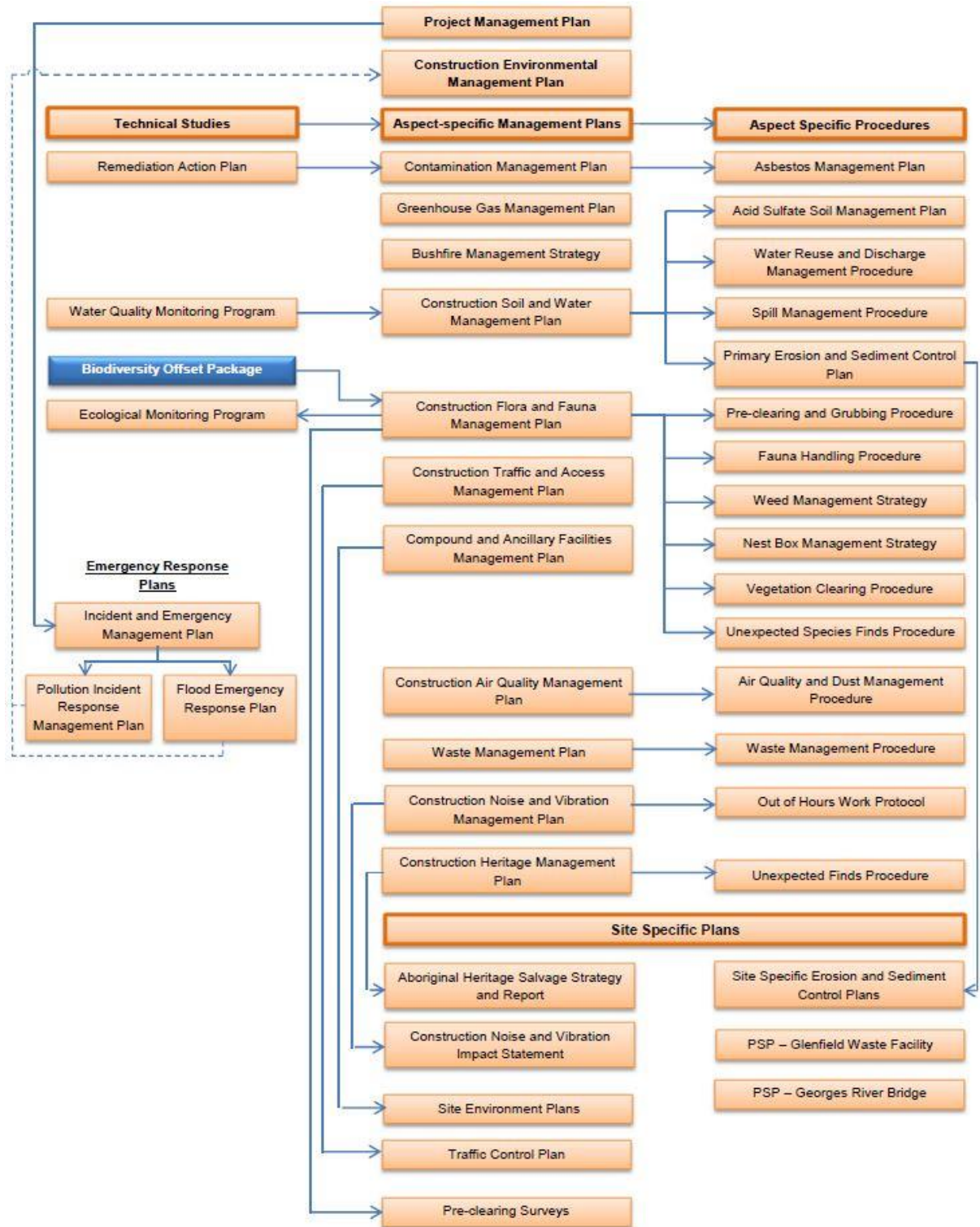


Figure 2: Environmental Documents Map

2. Legal and Other Requirements

2.1 Relevant Legislation

Local, State and Commonwealth legislation that apply criteria to the management of heritage on the project include:

- *Environmental Planning and Assessment Act 1979* (EP&A Act)
- *National Parks and Wildlife Act 1974* (NPW Act)
- *Heritage Act 1977*
- *Aboriginal and Torres Strait Islander Heritage Protection Act 1984* (Commonwealth)
- *Environment Protection and Biodiversity Conservation Act 1999* (Commonwealth)

Relevant provisions of the above legislation are detailed the CEMP.

2.2 Guidelines

Local, State and Commonwealth legislation that apply criteria to the management of heritage on the project include:

- Heritage Information Series: Photographic recording of heritage items using film or digital capture (DP&E Heritage Office, 2006)
- Assessing Significance for Historical Archaeological Sites and 'Relics' (Heritage Branch of the Department of Planning, 2009)
- Historical Archaeology Code of Practice (NSW Heritage Office, 2006)
- Levels of Heritage Significance (NSW Heritage Office, 2008)
- Assessing Heritage Significance, NSW Heritage Manual (Heritage Council of NSW, 2002)
- Statements of Heritage Impact, NSW Heritage Manual (Heritage Council of NSW, 2002)
- Stabilising Stuff: A Guide for Conserving Archaeological Finds in the Field (Heritage Council of NSW, 2012);
- Due Diligence Code of Practice for the Protection of Aboriginal Objects in NSW 2010 (DECCW, 2010)
- The Burra Charter: The Australia ICOMOS Charter for Places of Cultural Significance 2013 (the Burra Charter)
- Aboriginal Cultural Heritage Consultation Requirements for Proponents (OEH, 2010)

2.3 Additional Permits and Licences

No additional permits or licences are expected to be required in relation to the management of heritage on the Project.

3. Consultation and Stakeholders

3.1 Consultation on this Plan

The Stage 1 Conditions of Approval (CoA) require that the CHMP be prepared in consultation with the Office of Environment and Heritage (OEH), relevant local councils, the NSW Heritage Council and the relevant Local Aboriginal Land Councils (for Aboriginal heritage).

The Registered Aboriginal Parties (RAPs) are:

- Darug Aboriginal Cultural Heritage Assessments (DACHA)
- Cubbitch Barta Native Title Claimants Aboriginal Corporation (CBNTCAC)
- Tharawal LALC
- Tocomwall
- Darug Custodian Aboriginal Corporation (DCAC)
- Darug Tribal Aboriginal Corporation (DTAC)
- Darug Aboriginal Landcare Inc (DALI)
- Darug Land Observations (DLO)

Consultation with the RAPs is summarised in Table 1 below and in Section 3.1.1 below. Consultation with the RAPs was undertaken generally in accordance with the requirements detailed in the *Aboriginal cultural heritage consultation requirements for proponents 2010 (OEH)*, providing at least 28 days to comment.

Further, this CHMP, as a Sub Plan to the CEMP, is required to be approved by Department of Planning and Environment (DP&E) prior to construction as required by the CoA. Consolidated management plan consultation and approval requirements are identified in the CEMP. This consultation is intended to assist in development and finalisation of the plan.

Table 1 summarises relevant stakeholder comments as well as CPB Contractors' response including how we will address issues raised. Evidence of consultation on the CHMP is included in Attachment C. For further information on the consultation with all Agencies, see the Consultation Log in Attachment G to the CEMP

Table 1: Summary of Consultation

Agency	Status	Stakeholder Comment	CPB Response
OEH (Aboriginal Heritage)	Contacted 26/5/16 requesting comment on initial CHMP. Advised on 9/6/16 that they did not wish to comment prior to project approval. Provided CHMP again on 21/12/16 and 23/12/16 after project approval requesting comments on the CHMP. Advised on 17/1/17 that they had no comments on Salvage Strategy. Advised on 2/2/17 that they did not wish to comment on the CHMP.	OEH (Aboriginal Heritage) do not wish to participate in consultation regarding the CHMP	Noted

Agency	Status	Stakeholder Comment	CPB Response
NSW Heritage Council	<p>Contacted 26/5/16 requesting comment on initial CHMP. Advised on 9/6/16 that they did not wish to comment prior to project approval.</p> <p>Provided CHMP again on 21/12/16, 23/12/16 and 11/5/17 after project approval requesting comments on the CHMP.</p> <p>Comments provided on non-indigenous heritage on 25/01/2017</p>	<p>Generally the CHMP is considered adequate, however further assessment should be provided to clarify the impacts and mitigation measures relating to the SME site</p>	<p>Section 5.2 and Table 5 updated to address the SME site.</p>
		<p>The unexpected finds protocol should be updated to clearly identify that the process of management for non-indigenous archaeology includes:</p> <ul style="list-style-type: none"> ■ A stop work process also in accordance with the Heritage Act 1977 including the need to notify the Heritage Council of unexpected relics through a s146 notification; and ■ A step indicating that for non-indigenous heritage a recommendation from the Heritage Council to resume work may be required. 	<p>Unexpected finds protocol updated to address review comment.</p>
Liverpool City Council	<p>CHMP provided on 23/12/16 requesting comments. CHMP sent again on 17/1/17.</p> <p>LCC notified on 8/2/17 that they did not wish to provide comments on CHMP</p>	<p>Liverpool City Council advised that they do not wish to provide comments on CHMP.</p>	<p>Noted</p>
DACHA	<p>CHMP sent on 31/5/16 – comments requested by 14/6/16.</p> <p>No comments received.</p> <p>CHMP sent out again on 30/3/17 – comments requested by 20/4/17</p>	<p>No response received on CHMP.</p> <p>Input was provided on Salvage Strategy prior to CHMP consultation.</p>	<p>Noted</p> <p>Registered Aboriginal Parties are involved in the MA14 salvage program.</p> <p>Long term management of recovered artefacts will be managed through either reburial or a care and control agreement, in consultation with the Register Aboriginal Parties.</p> <p>Where unexpected Aboriginal heritage finds are encountered the Register Aboriginal Parties will be consulted as required by the unexpected finds protocol.</p>

Agency	Status	Stakeholder Comment	CPB Response
CBNTCAC	<p>CHMP sent on 31/5/16 – comments requested by 14/6/16.</p> <p>Emailed on 1/6/16 requesting hard copy. Hard copy sent by post.</p> <p>No comments received.</p> <p>CHMP sent out following DP&E review on 30/3/17 – comments requested by 20/4/17</p> <p>Comments received were on outcome of salvage works and not on CHMP.</p>	<p>No response received on CHMP.</p> <p>Input was provided on Salvage Strategy prior to CHMP consultation.</p>	<p>Noted</p> <p>Registered Aboriginal Parties are involved in the MA14 salvage program.</p> <p>Long term management of recovered artefacts will be managed through either reburial or a care and control agreement, in consultation with the Register Aboriginal Parties.</p> <p>Where unexpected Aboriginal heritage finds are encountered the Register Aboriginal Parties will be consulted as required by the unexpected finds protocol.</p>
Tharawal LALC	<p>CHMP sent on 31/5/16 – comments requested by 14/6/16.</p> <p>No comments received.</p> <p>CHMP sent out following DP&E review on 30/3/17 – comments requested by 20/4/17</p>	<p>No response received</p> <p>Comments were also not provided on the Salvage Strategy.</p>	<p>Noted</p> <p>Registered Aboriginal Parties are involved in the MA14 salvage program.</p> <p>Long term management of recovered artefacts will be managed through either reburial or a care and control agreement, in consultation with the Register Aboriginal Parties.</p> <p>Where unexpected Aboriginal heritage finds are encountered the Register Aboriginal Parties will be consulted as required by the unexpected finds protocol.</p>
Tocomwall	<p>CHMP sent on 31/5/16 – comments requested by 14/6/16.</p> <p>No comments received.</p> <p>CHMP sent out following DP&E review on 30/3/17 – comments requested by 20/4/17</p>	<p>No response received on CHMP.</p> <p>Input was provided on Salvage Strategy prior to CHMP consultation.</p>	<p>Noted</p> <p>Registered Aboriginal Parties are involved in the MA14 salvage program.</p> <p>Long term management of recovered artefacts will be managed through either reburial or a care and control agreement, in consultation with the Register Aboriginal Parties.</p> <p>Where unexpected Aboriginal heritage finds are encountered the Register Aboriginal Parties will be consulted as required by the unexpected finds protocol.</p>

Agency	Status	Stakeholder Comment	CPB Response
DCAC	<p>CHMP sent on 31/5/16 – comments requested by 14/6/16. No comments received.</p> <p>CHMP sent out following DP&E review on 30/3/17 – comments requested by 20/4/17</p>	<p>No response received on CHMP. Input was provided on Salvage Strategy prior to CHMP consultation.</p>	<p>Noted</p> <p>Registered Aboriginal Parties are involved in the MA14 salvage program.</p> <p>Long term management of recovered artefacts will be managed through either reburial or a care and control agreement, in consultation with the Register Aboriginal Parties.</p> <p>Where unexpected Aboriginal heritage finds are encountered the Register Aboriginal Parties will be consulted as required by the unexpected finds protocol.</p>
DTAC	<p>CHMP sent on 31/5/16 – comments requested by 14/6/16. No comments received.</p> <p>CHMP sent out following DP&E review on 30/3/17 – comments requested by 20/4/17</p>	<p>No response received on CHMP. Input was provided on Salvage Strategy prior to CHMP consultation.</p>	<p>Noted</p> <p>Registered Aboriginal Parties are involved in the MA14 salvage program.</p> <p>Long term management of recovered artefacts will be managed through either reburial or a care and control agreement, in consultation with the Register Aboriginal Parties.</p> <p>Where unexpected Aboriginal heritage finds are encountered the Register Aboriginal Parties will be consulted as required by the unexpected finds protocol.</p>
DALI	<p>CHMP sent on 31/5/16 – comments requested by 14/6/16. No comments received.</p> <p>CHMP sent out following DP&E review on 30/3/17 – comments requested by 20/4/17 DALI were supportive of CHMP</p>	<p>No response received during initial consultation in 2016, and indicated they were generally supportive of the CHMP following further consultation in April 2017. Comments were also not provided on the Salvage Strategy.</p>	<p>Noted</p> <p>Registered Aboriginal Parties are involved in the MA14 salvage program.</p> <p>Long term management of recovered artefacts will be managed through either reburial or a care and control agreement, in consultation with the Register Aboriginal Parties.</p> <p>Where unexpected Aboriginal heritage finds are encountered the Register Aboriginal Parties will be consulted as required by the unexpected finds protocol.</p>
DLO	<p>CHMP sent on 31/5/16 – comments requested by 14/6/16. Comments provided on 6/6/16</p> <p>CHMP sent out following DP&E review on 30/3/17 – comments requested by 20/4/17</p>	<p>Generally supportive of the CHMP, and provided comments about future artefact management and continuing involvement.</p>	<p>Registered Aboriginal Parties are involved in the MA14 salvage program.</p> <p>Long term management of recovered artefacts will be managed through either reburial or a care and control agreement, in consultation with the Register Aboriginal Parties.</p> <p>Where unexpected Aboriginal heritage finds are encountered the Register Aboriginal Parties will be consulted as required by the unexpected finds protocol.</p>

3.1.1 Consultation with Registered Aboriginal Parties prior to Construction

Registered Aboriginal Parties (RAPs) regarding the Moorebank Precinct East (MPE) – Rail Access Land Package (RALP) No.1 have been consulted on various components of the project since February 2016, in addition to during the development of the EIS. Each RAP has been contacted at least 6 times as part of the development of the Salvage Strategy (Condition of Approval #C15) and the Construction Heritage Management Plan (Condition of Approval #E34 c)). Consultation with the RAPs was undertaken generally in accordance with the requirements detailed in the *Aboriginal cultural heritage consultation requirements for proponents 2010 (OEH)*, providing at least 28 days to comment.

Consultation has been led by Extent Heritage, the qualified heritage consultant engaged by CPB Contractors to undertake the development of the Salvage Strategy, Construction Heritage Management Plan (CHMP) and to coordinate the salvage of the MA14 Aboriginal Site. A summary of all of the consultation with the RAPs is included in Attachment C.

Salvage of the MA14 site commenced in March 2017, with all the RAPs invited to attend.

Consultation will continue with the RAPs throughout construction, as detailed in Section 3.2 below.

3.2 Ongoing Indigenous Heritage Consultation throughout Construction

On the long term curation and management of:

- Aboriginal objects recovered through the MA14 archaeological program, and any mitigation measures implemented prior to, and during, the works; and
- Aboriginal objects recovered through any other activity by the project.

In the event of the discovery or disturbance of previously unidentified Aboriginal objects, consultation with Registered Aboriginal Parties (RAPs), DP&E, OEH and the NSW Police Force (if human remains are encountered) would be undertaken. Consultation would ensure the assessment of the significance of the item, determination and implementation of appropriate management measures and the re-commencement of works would be undertaken to the satisfaction of the nominated stakeholders. Refer to the Unexpected Heritage Finds Procedure (Attachment D). As a result of an unexpected find a Heritage Management Procedure may be developed as required in consultation with the heritage specialist.

If additional assessment is required (e.g. for additional land requirements), assessment and consultation would be undertaken as per recommendations from a heritage consultant. This process will determine if further consultation and/or approval is required prior to works being conducted.

Consultation with RAPs will also be conducted by CPB Contractors in the event that unexpected Aboriginal heritage finds are discovered during construction of the Project.

3.3 Ongoing Non-Indigenous Heritage Consultation throughout Construction

No non-indigenous heritage items are expected to be impacted during the works. In the event that previously unidentified non-indigenous heritage items are encountered further consultation will be undertaken with:

- OEH
- Heritage Council
- DP&E
- Project heritage consultant / archaeologist

As a result of an unexpected find a Heritage Management Procedure may be developed as required in consultation with the heritage specialist.

4. Roles and Responsibilities

4.1 Key Personnel

The role titles and responsibilities that are used in this plan are outlined in Table 2.

Table 2: Roles and Responsibilities

Role	Responsibilities
Project Director	<ul style="list-style-type: none"> ■ Manage the delivery of the Project including overseeing implementation of heritage management measures during construction in conjunction with the Environment team. ■ Contractor's Representative
Environment Manager	<ul style="list-style-type: none"> ■ Manage the on-ground application of heritage management measures during construction. ■ Provide guidance to senior management with regard to aspects and risks associate with management of heritage items ■ Ongoing consultation with RAPs as required ■ Heritage inductions and training
Environmental Coordinator	<ul style="list-style-type: none"> ■ Develop and oversee implementation of on-ground management documents associated with heritage ■ Monitor and report on heritage management during construction
Engineering Manager	<ul style="list-style-type: none"> ■ Ensure relevant heritage management requirements are addressed in design development.
Construction Manager	<ul style="list-style-type: none"> ■ Manage the delivery of the construction process, in relation to heritage management across all sites in conjunction with the Environment team.
Project Engineer	<ul style="list-style-type: none"> ■ Manage the delivery of the construction process, in relation to heritage management across all sites in conjunction with the Environment team. ■ Implement heritage management activities during construction works, as directed by the Construction Manager or the Environment Manager.
Supervisor	<ul style="list-style-type: none"> ■ On-ground implementation and adherence with heritage management requirements.
Communications Manager	<ul style="list-style-type: none"> ■ Facilitate communications and consultation process over heritage matters in conjunction with the Environment team.
Project Archaeologist	<ul style="list-style-type: none"> ■ Heritage specialist engaged to undertake investigations and respond to unexpected finds.

Key environmental responsibilities are detailed throughout each Element in Part B of the CEMP.

4.2 Training

All personnel working on site will undergo site induction training relating to indigenous and non-indigenous heritage issues. The induction training will address elements related to indigenous and non-indigenous heritage management including:

- Legislative and other requirements and penalties for impacting heritage sites.
- Roles of personnel with regard to heritage management measures.
- Overview of assessments completed and heritage items discovered.
- The location and protection of identified heritage sites.
- Means of identifying indigenous and non-indigenous heritage items and places.
- Procedure to follow in the event of the discovery of human remains during construction works.
- Procedure to follow in the event of the unexpected heritage item find during construction works.

Records of inductions will be maintained.

5. Existing Environment

The existing Indigenous heritage items, Non-Indigenous heritage items, areas of archaeological sensitivity, and other sensitive areas adjacent to the corridor and relevant to the Project are described in this section.

5.1 Identified Indigenous Cultural and Archaeological Heritage

An Indigenous heritage impact assessment was completed as part of the Stage 1 EIS and Response to Submission Report (RtS) and found that indigenous heritage sites of relevance to the Project are:

- An area known as MA14 (formerly known as the PAD 2 site as shown in Figure 3 and refined after investigations to MA14 in Figure 4) where Aboriginal objects were recovered, is on the eastern bank of Georges River. The site is considered to have high research potential, meeting the thresholds of local significance.
- PAD 1 is also on the eastern bank of the Georges River and situated on MIC site and outside of the project site.
- PAD 3 on the disused rail corridor directly south of and adjacent to the SIMTA site. It is noted that the Stage 1 EIS identified that PAD 3 contained no cultural materials and could be de-listed.

Through the Aboriginal consultation process two sites of archaeological concern were identified within the riparian corridor along the western bank of the Georges River (refer Figure 4). One site bounds the eastern side of section of the proposed rail line and the other site is north of the rail line. As part of the MIC EIS, Navin Officer Heritage Consultants (2014) also identified the western banks of Georges River as of archaeological importance. The western bank was considered to retain high research potential, since excavations failed to reach the base of the deposits.

Due to the large number of rail options for the Project, Navin Officer Heritage Consultants did not undertake specific site investigations for these areas; rather they identified areas requiring future consideration. One of these areas is situated at the northern end of the area identified as having cultural value. Effectively, the sites encompass the riparian corridor of the Georges River for approximately 1.5km, and are not located in close proximity to the amended Rail Link.

While this area is unlikely to be impacted by the Rail Link works, discussion regarding it is included should the project boundary change due to unforeseen circumstances. If this were to occur additional investigation and assessment would be undertaken, including consultation with RAPs, to determine the potential impacts. Approval would typically be sought through a Project Modification.

The locations of the indigenous heritage sites are identified in the figures below.



Figure 3: Potential Archaeological Deposits (2015 test excavations conducted in PADs 2 and 3 are indicated with green squares) (Source: Stage 1 RtS Appendix K AHIA Addendum)

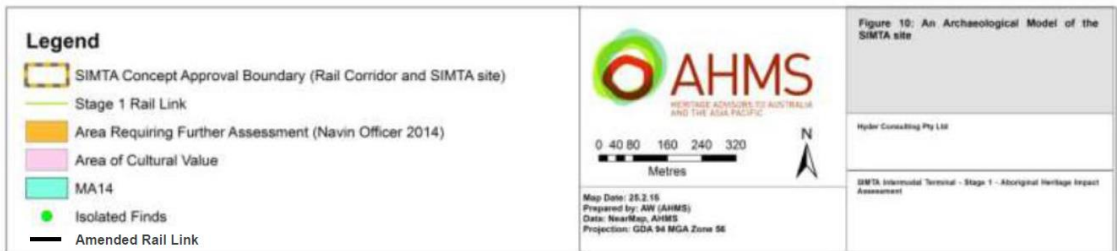
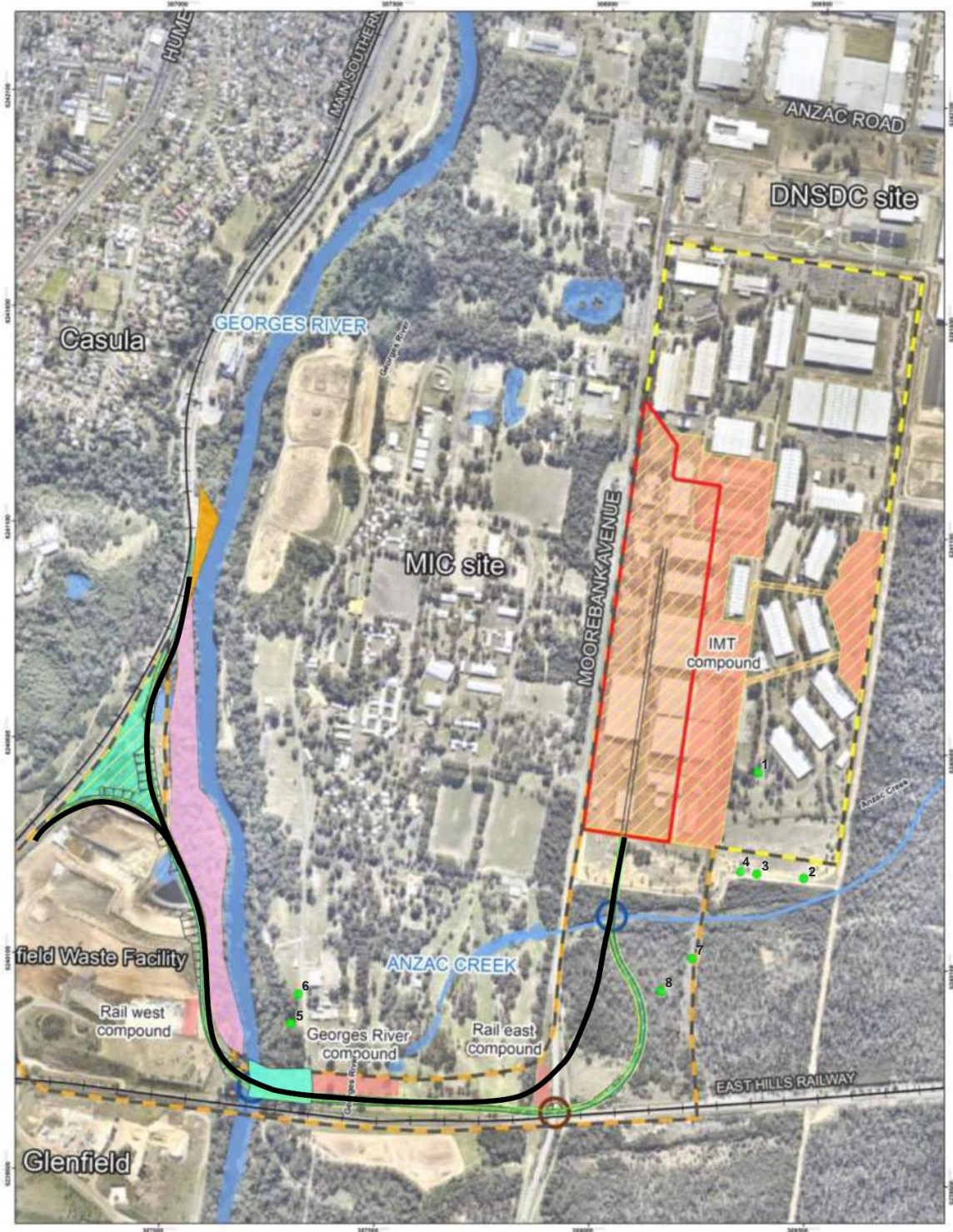


Figure 4: Map of Aboriginal objects/sites based on recent studies (MA14, part of the original PAD 2, has the potential to contain significant cultural material) (Source image: Stage 1 EIS, Appendix T)



Figure 5: Proposed MA14 Archaeological Salvage Area (approximate location shown in pink) (Source: MA14 Salvage Strategy)

5.2 Identified Non-Indigenous Heritage

A non-indigenous heritage assessment was undertaken as part of the Stage 1 EIS and RtS and found that non-indigenous heritage listings for the site or adjacent lands include:

- The Defence National Storage and Distributions Centre (DNSDC) site, on the SIMTA site, and north of the Rail Link, is listed on the Commonwealth Heritage List. The Stage 1 site contains three WWII timber post and beam store buildings (Buildings no. 6, 10, and 11) and two WWII crane service composite timber and steel store buildings (Buildings no. 7 and 9).
- The School of Military Engineering (SME) site, to the west of the SIMTA site, is locally listed on the Liverpool LEP. This land is also subject to the MIC proposal and includes the Royal Australian Engineers (RAE) Memorial Chapel, RAE Monument, Major General Sir Clive Steel Memorial Gates, and the Cust Hut. The area affected by the Rail Link works is the southern edge of the site which has been disturbed through the construction of the Royal Australian Engineers (RAE) golf course and is located adjacent and parallel to the East Hills railway line.
- Glenfield Farm, located on the western side of the Georges River, is listed on the State Heritage Register, State Heritage Inventory and the Liverpool LEP. The curtilage of the item is located approximately 50 m from the south-western extent of the proposed Rail Link.

The indicative locations of non-indigenous heritage items are shown in Figure 6 below.



Figure 6: Non-indigenous Heritage (Base Map Source: Google Maps 2016)

6. Aspects and Potential Impacts

6.1 Activities, Hazards and Risks

Activities conducted on the project that has the potential to impact heritage values are listed below.

Table 3: Activities, Hazards and Risks

Project Activity	Environmental Hazard	Environmental Risk
Vegetation clearance / grubbing / demolition	<ul style="list-style-type: none"> ■ Removal of heritage listed items ■ Loss of screening for heritage properties or other impacts to heritage curtilage 	<ul style="list-style-type: none"> ■ Discovery or disturbance of unidentified heritage artefact or archaeological remains ■ Impacts to heritage curtilage or visual amenity beyond approved extents ■ Damage to or loss of heritage beyond approved extents
Excavation and surface works	<ul style="list-style-type: none"> ■ Clearing, excavation or other damage outside of approved footprint. ■ Vibration during excavation or piling ■ Amenity impacts – visual impacts 	<ul style="list-style-type: none"> ■ Discovery or disturbance of unidentified heritage artefact or archaeological remains ■ Damage to or loss of heritage beyond approved extents ■ Structural damage non-indigenous heritage items ■ Potential damage to buildings – building shaking, ground subsidence, and vibration impacts
Spoil transport and other heavy vehicle use of public roads	<ul style="list-style-type: none"> ■ Road vibration impacts resulting in structural damage to heritage items located within close proximity of haulage route 	<ul style="list-style-type: none"> ■ Potential damage to non-indigenous heritage items
Rehabilitation works	<ul style="list-style-type: none"> ■ Rehabilitation including landscaping and reinstatement of heritage items and curtilage areas 	<ul style="list-style-type: none"> ■ Impacts to heritage curtilage or visual amenity
Scope and/or design change	<ul style="list-style-type: none"> ■ Modifications to design and construction methodology 	<ul style="list-style-type: none"> ■ Change to the construction footprint resulting in impacts to areas not previously assessed to be affected

6.2 Potential Indigenous Heritage Impacts

Indigenous heritage items and potential impacts due to the construction of the Rail Link are described in Table 4 below.

Table 4: Indigenous Heritage Items

Site Identification	Location	Description	Impact
MA14	On the eastern bank of Georges River and sited partially on the project site	<ul style="list-style-type: none"> ■ Artefact Scatter and archaeological deposit. 	Rail link is anticipated to impact approximately 20%, or 2,000 m ² , of total area of MA14.
PAD 1	On the eastern bank of the Georges River and situated on MIC site and outside of the Rail Link project site.	<ul style="list-style-type: none"> ■ Culturally significant as it contains recorded sites. ■ A river terrace running along the eastern side of the Georges River; largely undisturbed; vegetation cleared; eroding; grassy with exposures. 	None
PAD 3	Eastern side of Moorebank Avenue, south of the SIMTA site.	<ul style="list-style-type: none"> ■ Found to contain no cultural material. ■ Recommended to be delisted. 	None

Site Identification	Location	Description	Impact
Pink shaded area in Figure 4	Within the riparian corridor along the western bank of the Georges River. North of the Rail Link and outside of the Project site.	<ul style="list-style-type: none"> Area of cultural value. Encompasses the slopes and floodplains. 	None
Orange shaded area in Figure 4	Within the riparian corridor along the western bank of the Georges River. East of the Rail Link and outside of the Project site.	<ul style="list-style-type: none"> Archaeological importance. Area of cultural value for further assessment under the MIC proposal. 	None
Isolated Find #1	Flat cleared area, east of SIMTA Stage 1 site. Outside of the Project works area.	<ul style="list-style-type: none"> Mudstone complete flake; found in sandy clay, flat cleared area. 	None
Isolated Find #2	Vehicle track north of Anzac Creek. Outside of the Project works area.	<ul style="list-style-type: none"> Mudstone possible flake core; found near vehicle track in mud. 	None
Isolated Find #3	Vehicle track north of Anzac Creek. Outside of the Project works area.	<ul style="list-style-type: none"> Red/ black silcrete possible core with one negative flake scar; found near vehicle track in mud. 	None
Isolated Find #4	Vehicle track north of Anzac Creek. Outside of the Project works area.	<ul style="list-style-type: none"> Chert core with 8 negative flake scars; found near vehicle track in mud. 	None
Isolated Find #5	Western side of Tarakan Road, within the MIC site. Outside of the Project works area.	<ul style="list-style-type: none"> Red silcrete possible flaked piece found on sandy exposure west of road. 	None
Isolated Find #6	Western side of Tarakan Road, within the MIC site. Outside of the Project works area.	<ul style="list-style-type: none"> Poor quality grey chert/ silcrete; possible medial flake; found on sandy exposure west of road. 	None
Isolated Find #7	Western side of rail spur off the East Hills rail line, within Boot land. Outside of the Project works area.	<ul style="list-style-type: none"> Red silcrete proximal flake; found in gravel along rail corridor. 	None
Isolated Find #8	Within PAD 3, in the boot land south of Anzac Creek. Outside of the Project works area.	<ul style="list-style-type: none"> Potential a ground oven that may also contain a burial underneath 	None

6.3 Potential Non-Indigenous Heritage Impacts

Indigenous heritage items and potential impacts due to the construction of the Rail Link are described in Table 5 below. Due to the distance (>200m) between the construction footprint and the nearest sensitive receivers, vibration impacts are not anticipated on any buildings. See the CNVMP for more information on minimum work distances.

Table 5: Non-Indigenous Heritage Items

Site Identification	Location	Description	Impact
Former Defence National Storage and Distributions Centre (DNSDC) (SIMTA site)	On the eastern side of Moorebank Avenue	<ul style="list-style-type: none"> ■ Largely intact network of WWII-era buildings, road, drains, and rail sidings. ■ Listed on the Commonwealth Heritage List. 	The Rail Link project will not impact any buildings in the DNSDC site, and there would not be impact on the heritage significance of the item(s) located on this site.
School of Military Engineering (SME) (MIC site)	On the western side of Moorebank Avenue directly opposite to the SIMTA site	<ul style="list-style-type: none"> ■ Locally listed in Liverpool LEP – Item 57 (the area impacted by the proposal is mostly bush land or golf course and does not contain any items of heritage significance). 	<p>The proposed Rail Link passes through a small part and alongside the southern boundary of the MIC site.</p> <p>Impacts would be limited to a small portion of the SME site which is located on the southern edge of the RAE golf course and is adjacent/parallel to the EHL. The project impact area is already highly disturbed and therefore the works would not have any direct impact on the heritage significance of the item(s) located on this site.</p> <p>The curtilage of the SME (MIC site) will be visually impacted by the Rail Link works. Considering the Rail Link is adjacent and parallel to the existing East Hill railway line, these impact would be minor.</p> <p>Unexpected finds would be managed in accordance with the protocol.</p>
Glenfield Farm	Located adjacent to the rail corridor portion (on the western side of the SSFL)	<ul style="list-style-type: none"> ■ Glenfield Farm Group including homestead, barn (former dairy and stables). ■ Listed on the State Heritage Register and the Liverpool LEP. 	<p>Construction of the Rail Link has the potential to result in temporary impacts (visual, noise and air) on the listed Glenfield Farm Group heritage items, due to the location and operation of plant and equipment and vehicle movements during construction.</p> <p>The Stage 1 EIS does not anticipate any vibration impact.</p>

6.4 Cumulative Impacts

An assessment of the predicted cumulative impacts of the SIMTA and MIC projects has been obtained through review of the respective EISs. A summary of the findings is provided below.

6.4.1 Indigenous Heritage

Previous activities on the SIMTA site resulted in a high level of disturbance to the site. It is likely that this would also be the case for the MIC Proposal site. The introduction of fill will impact any existing land surface and/or soil profile (and any associated Aboriginal objects) present within the area of the two projects, however this will be mitigated by the pre-construction salvage program to be implemented as part of the Rail Link project at the MA14 site.

Overall, it is concluded that the cumulative impacts on indigenous heritage of the SIMTA Project and the MIC Proposal will be minimal, subject to the implementation of mitigation measures.

6.4.2 Non-Indigenous Heritage

The contribution of the Rail Link Project to the impacts on non-indigenous heritage is minimal, as the construction of the Rail Link does not impact any known non-indigenous heritage items. Consideration

of the cumulative impacts of the rest of the Stage 1 Project, SIMTA Project and MIC Proposal is discussed below.

Construction of the overall SIMTA Project and MIC Proposal will result in loss of heritage structures and subsequent loss of heritage context. The Concept Plan committed to consultation with Department of Defence during the approvals process to align both the SIMTA Project and MIC Proposal in the management of non-indigenous heritage items as far as practicable.

Works on the SIMTA site will be aligned to any divestment strategy of the Department of Defence during their relocation from the SIMTA site, taking into consideration all heritage items within the SIMTA Site and the vicinity of the SIMTA site, and maintaining the heritage significance through the development options and possible mitigation measures, however this is outside of the scope of the Rail Link project.

There will be greater collective impact on non-indigenous heritage resulting from the loss of WWII buildings on the SIMTA site. Impact on non-indigenous heritage will further compound the rarity and representativeness of any remaining heritage items both within the Project site and the wider landscape. The change in land use at the MIC site combined with the relocation of the DNSDC has compounded the overall loss of connection with former Defence uses across the Moorebank precinct.

6.4.3 Heritage Cumulative Impact Mitigation

Measures to mitigate the cumulative Indigenous and Non-Indigenous heritage impacts are included in Section 7 of this Plan.

7. Management, Controls and Mitigation Measures

Controls that are adequate to manage Heritage and to reduce risk to the lowest acceptable rating achievable are implemented before any relevant works commence. Elimination of the hazard is the first preference of control, followed by engineering, then administrative controls. Controls used on this project are described in this section.

7.1 Heritage Management

7.1.1 Management of Identified Heritage Items

Heritage management measures for identified indigenous and non-indigenous heritage items in the vicinity of the Rail Link are provided below in Table 6 and Table 7 respectively.

Table 6: Indigenous Heritage Management

Site Identification	Management Measure
MA14	<ul style="list-style-type: none"> MA14 Salvage Strategy, Program and Report. Salvage will be focused on the area indicated in Figure 5, and undertaken prior to pre-construction and construction works.
PAD 1	<ul style="list-style-type: none"> No impact predicted. Standard management measures detailed in Table 8 including the unexpected heritage finds process detailed in Attachment D will be implemented as appropriate.
PAD 3	<ul style="list-style-type: none"> No impact predicted. Standard management measures detailed in Table 8 including the unexpected heritage finds process detailed in Attachment D will be implemented as appropriate.
Pink shaded area in Figure 4	<ul style="list-style-type: none"> No impact predicted. Standard management measures detailed in Table 8 including the unexpected heritage finds process detailed in Attachment D will be implemented as appropriate.
Orange shaded area in Figure 4	<ul style="list-style-type: none"> No impact predicted. Standard management measures detailed in Table 8 including the unexpected heritage finds process detailed in Attachment D will be implemented as appropriate.
Isolated Finds #1 to #8	<ul style="list-style-type: none"> No impact predicted (as they are outside of the works areas). Standard management measures detailed in Table 8 including the unexpected heritage finds process detailed in Attachment D will be implemented as appropriate.

Table 7: Non-Indigenous Heritage Management

Site Identification	Management Measure
Former Defence National Storage and Distributions Centre (DNSDC) (SIMTA site)	<ul style="list-style-type: none"> No specific mitigation measures are proposed. Standard management measures detailed in Table 8, Attachment D will be implemented.
School of Military Engineering (SME) (MIC site)	<ul style="list-style-type: none"> No specific mitigation measures are proposed. Standard management measures detailed in Table 8, Attachment D will be implemented.
Glenfield Farm	<ul style="list-style-type: none"> No specific mitigation measures are proposed. Standard management measures detailed in Table 8, Attachment D and other Aspect Specific Management Plans will be implemented.

When undertaking any work near known heritage items, work is to follow the Heritage Management Procedure (Attachment E). This excludes works being undertaken as part of the MA14 Salvage works, which are managed under the Strategy approved for those works.

7.1.2 Unexpected Heritage Finds

In the event that an unexpected indigenous or non-indigenous heritage item is encountered during construction the Unexpected Heritage Finds Procedure in Attachment D will be followed.

7.2 Mitigation Measures

Mitigation measures for the management of heritage impacts are listed in Table 8 below.

Table 8: Mitigation Measures

Ref	Control	Timing	Accountability	Source
H1	All cultural heritage items and places to be preserved will be fenced/flagged and sign posted as No-go zones and shown on relevant site plans and communicated to the relevant workforce. These No-go zones must be observed at all times until a Permit to Enter No-go Zone has been authorised.	Pre-construction Construction	Site Supervisor Project Engineer Environmental Coordinator	CPB Contractors Mandatory Minimum
H2	Ground disturbance must not take place until a Land Disturbance Permit (Permit to Clear Land or Vegetation) has been authorised.	Pre-construction Construction	Site Supervisor Project Engineer Environmental Coordinator	CPB Contractors Mandatory Minimum
H3	All Personnel will undertake a Site Induction which includes Indigenous Heritage and Non-Indigenous heritage. Specific training will be provided to persons likely to impact on heritage items or values.	Pre-construction Construction	Project Director	CPB Contractors Mandatory Minimum
H4	All necessary approvals will be obtained prior to commencing any works in areas of known or potential heritage items.	Pre-construction Construction	Project Director Environment Manager	Good practice
H5	Formal documented engagement will be maintained with relevant heritage groups or traditional owners or Registered Aboriginal Parties throughout the project.	Pre-construction Construction	Communications Manager Environment Manager	Good practice
H6	CPB Contractors will not harm, modify or otherwise impact any heritage items outside the subject site.	Pre-construction Construction	Project Director Engineering Manager Construction Manager Environment Manager	CoA
H7	Where appropriate, indigenous heritage items discovered through the unexpected finds process detailed in Attachment D will be registered in OEH's Aboriginal Heritage Information Management System (AHIMS).	Construction	Site Supervisor Project Engineer Environment Manager	CoA NSW Concept Plan Revised SoC C'th MM
H8	If during construction vibration on heritage items is identified to be an issue, consideration will be given to methods to prevent damage to any retained heritage items, including: <ul style="list-style-type: none"> ■ Procedures for identifying minimum working distances to retained heritage items (including, at minimum, vibration testing and monitoring), ■ Detailed options for alteration of construction methodology should preferred values for vibration be exceeded, and Commitment to implementing those options if preferred values for vibration are likely to be exceeded.	Construction	Construction Manager Site Supervisor Project Engineer Environment Manager	CoA

Ref	Control	Timing	Accountability	Source
H9	Installation of temporary fencing for the protection of the riparian corridor along the western bank of the Georges River.	Pre-construction	Construction Manager Project Engineer Environment Manager	NSW Concept Plan Revised SoC
H10	Avoid impacting any known Aboriginal heritage objects, sites or places and places that have potential Aboriginal heritage or cultural values.	Pre-construction Construction	Engineering Manager Construction Manager Project Engineer Environment Manager	NSW Concept Plan Revised SoC
H11	Where impact cannot be avoided, choose partial impact rather than complete impact wherever possible and ensure that appropriate measures to mitigate impacts are developed and implemented as required and as appropriate during design and construction.	Design Pre-construction Construction	Engineering Manager Construction Manager	NSW Concept Plan Revised SoC C'th MM
H12	In the event that previously undiscovered Aboriginal objects, sites or places (or potential Aboriginal objects, sites or places) are discovered during construction, all works in the vicinity of the find should cease and SIMTA should determine the subsequent course of action in consultation with a heritage professional, relevant Registered Aboriginal Parties and/or the relevant State government agency as appropriate.	Construction	Site Supervisor Project Engineer Environmental Coordinator Environment Manager	NSW Concept Plan Revised SoC
H13	Should suspected human skeletal material be identified, all works should cease and the NSW Police and the NSW Coroner's office contacted. Should the burial prove to be archaeological of Aboriginal origin, consultation with a heritage professional, relevant RAPs and/or the relevant State government agency, will be undertaken.	Construction	Site Supervisor Project Engineer Environmental Coordinator Environment Manager	NSW Concept Plan Revised SoC
H14	The potential visual impact of the proposed rail corridor shall be mitigated by the use of screening vegetation and terracing or earth mounding to soften the impact of the flyover.	Design	Engineering Manager	NSW Concept Plan Revised SoC C'th MM
H15	If any archaeological deposit or item of heritage significance is located within the study area and is at risk of being impacted, the NSW Heritage Council should be notified and a heritage consultant/archaeologist should be engaged to assess the item to determine its heritage significance.	Construction	Construction Manager Project Engineer Environment Manager	C'th MM
H16	If re-location of any element of the SIMTA proposal outside areas assessed within the Aboriginal Cultural Heritage Assessment (AHMS, 2012) is proposed, further assessment of the additional area(s) will be undertaken to identify and appropriately manage Aboriginal objects/sites/places that may be in this additional area(s).	Design Pre-construction Construction	Engineering Manager Construction Manager Environment Manager	C'th MM

Ref	Control	Timing	Accountability	Source
H17	Any proposed impacts to mature trees (greater than 80 years old) in the golf course will be avoided.	Design Pre-construction Construction	Engineering Manager Construction Manager Environment Manager	C'th MM
H18	If avoidance is not feasible, any mature trees that will be impacted by the proposed development will be inspected to identify any potential Aboriginal cultural scarring.	Design Pre-construction Construction	Engineering Manager Construction Manager Environment Manager	C'th MM
H19	Should the survey (in H18) identify any trees with potential cultural scarring, further heritage assessment and/or mitigation measures will be developed.	Pre-construction Construction	Engineering Manager Construction Manager Environment Manager	C'th MM

8. Review and Improvement

8.1 Monitoring

Heritage monitoring is performed that complies with legal and contract requirements and which is sufficient to identify potential non-compliances before they occur.

- The Environmental Coordinator will undertake weekly inspections and monitoring of construction activities to ensure compliance with the requirements of this plan.
- The Weekly Environmental Inspection Checklist will be used to maintain compliance and effectiveness of controls. If actions are required, then an actions form will be completed and issued to the foreman for action. These actions will be tracked to ensure items are closed out within the appropriate timeframes.
- Vibration monitoring is not proposed, but will be considered if there is a risk of vibration impact on heritage items or is recommended through a Construction Noise and Vibration Impact Statement.

Where monitoring determines non-compliance to be a risk or to have occurred, an incident report and corrective actions are raised in Synergy. Refer to the CEMP, Part B, Element 9 for incident management details.

Monitoring and analysis of data will be carried out by a competent person. Evidence of competence must be retained.

It is the accountability of the Environment Manager to ensure all monitoring is performed according to these requirements.

8.2 Reporting

- Where required, recording and/or salvage of indigenous/non-indigenous items will be undertaken in accordance with relevant guidelines in accordance with the relevant approval for the unidentified find associated with the project.
- Where recording or salvage has been undertaken, a report will be submitted to the Secretary of DP&E and any other parties specified in the Conditions of Approval (#C15) containing the findings of the recordings or excavations, including artefact analysis, and the identification of a final repository for any finds. The report will be prepared in consultation with the Registered Aboriginal Parties (RAPs) and Office of Environment and Heritage (OEH) as specified in the Conditions of Approval (#C15). Refer to the approved Salvage Strategy document for more information
- The Weekly Environmental Inspection Checklist will be used to ensure that all environmental aspects are reviewed during inspection of the project. Actions arising from the inspections will be recorded and each action will be allocated to the foreman for the work area.
- Periodic reporting will be completed in accordance with the CEMP.

8.3 Auditing

Audits (both internal and external) will be undertaken to assess the effectiveness of environmental controls, compliance with this CHMP, Conditions of Approval and any other relevant approval and licence. Audit requirements are described in the CEMP.

As per Part B – Element 12 of the CEMP, the CHMP will be reviewed every 6 months to ensure it is applicable to works on site. Any updates to the CHMP will be in accordance with the criteria set out in the CEMP.

8.4 Continuous Improvement

Continual improvement is achieved through constant measurement and evaluation, audit and review of the effectiveness of the plan, and adjustment and improvement of the CEMP, project environmental outcomes and CPB Contractors' Environmental Management System.

This Plan will be updated as required:

- To take into account changes to the environment or generally accepted environmental management practices, new risks to the environment or changes in law
- Where requested or required by the Department of Planning & Environment or any other Authority
- In response to internal or external audits or six-monthly management reviews.

The updated plan must be endorsed by the Environment Manager and approved internally by the Project Director. Minor changes may be approved by the Environmental Representative. Minor changes would typically include those that:

- Are editorial in nature (e.g. staff and agency/authority name changes)
- Do not increase the magnitude of impacts on the environment when considered individually or cumulatively
- Do not compromise the ability of the project to meet approval or legislative requirements.

Where the Environmental Representative deems it necessary, the plan will be provided to relevant stakeholders for review and comment if required and forwarded to the Secretary of DP&E for approval.

THIS PAGE LEFT BLANK INTENTIONALLY

Attachments

Attachment A: Compliance Matrix

Contract Clauses

Table 9: Principal's Project Requirements

Principal's Project Requirements	Requirement	Where Addressed
Section 1.4 (cc)	Comply with any obligations resulting from the submission of the Aboriginal Heritage Site Recording Form for MA14 where these obligations relate to the delivery of RALP No. 1	This Plan (to be updated on completion of MA14 site recording)

Conditions of Project Environmental Approvals

Stage 1 Conditions of Approval

Table 10: Stage 1 Conditions of Approval

Stage 1 CoA Ref	Requirement	Where Addressed
C13	Prior to the commencement of construction activities affecting the WWII store buildings, the Applicant shall complete all archival recordings. This work shall be undertaken by an experienced heritage consultant, in accordance with the guidelines issued by the Heritage Council of NSW. Within 6 months of completing this work, the Applicant shall submit a report containing archival recordings to the Secretary, Certifying Authority, the Heritage Council of NSW, Liverpool Council and the local Historical Society.	Rail Link works not expected to impact on retained heritage items. Section 6.3
C14	Prior to the commencement of construction activities affecting the WWII store buildings, the Applicant shall prepare a Heritage Interpretation Strategy, in consultation with the Heritage Division. The Strategy shall be submitted for the approval of the Secretary with a copy provided to the Certifying Authority.	Rail Link works not expected to impact on retained heritage items. Section 6.3
C15	Prior to the commencement of pre-construction and construction activities affecting Aboriginal site MA14, the Applicant shall: a) develop a detailed salvage strategy, prepared in consultation with OEH (Aboriginal heritage) and the Aboriginal stakeholders. The investigation program shall be prepared to the satisfaction of the Secretary; and b) undertake any further archaeological excavation works recommended by the results of the Aboriginal archaeological investigation program. Within twelve months of completing the above work, unless otherwise agreed by the Secretary, the Applicant shall submit a report containing the findings of the excavations, including artefact analysis and Aboriginal Site Impacts Recording Forms (ASIR), and the identification of final storage location for all Aboriginal objects recovered (testing and salvage), prepared in consultation with the Aboriginal stakeholders, the OEH (Aboriginal heritage) and to the satisfaction of the Secretary. Note: where archaeological testing has occurred as part of the Environmental Assessment and the results are included in the documents listed in condition A1 the sites tested must still form part of the final report prepared under C16(b).	MA14 Salvage Strategy, Program and Report
E12	The Applicant shall not harm, modify or otherwise impact any heritage items outside the subject site.	Table 8

Attachments

Stage 1 CoA Ref	Requirement	Where Addressed
E34	As part of the CEMP for the SSD, the Applicant shall prepare and implement:	CEMP
E34 c)	c) a Construction Heritage Management Plan to ensure construction impacts on Aboriginal and non-Aboriginal heritage will be appropriately avoided, minimised and managed. The Plan shall be developed in consultation with OEH, the relevant Council, the NSW Heritage Council (for non-Aboriginal State heritage items) and the relevant Local Aboriginal Land Councils (for Aboriginal heritage), and include, but not necessarily be limited to:	This Plan Section 3 Attachment C
E34 c)	(i) in relation to Aboriginal Heritage:	This Plan
E34 c)	a) details of management measures to be carried out in relation to Aboriginal heritage, including a detailed methodology and strategies for protection, monitoring, and conservation of sites and items;	Section 7 Section 8 MA14 Salvage Strategy, Program and Report
E34 c)	b) procedures for dealing with previously unidentified Aboriginal objects (excluding human remains), including cessation of works in the vicinity, assessment of the significance of the item(s) and determination of appropriate mitigation measures, including when works can re-commence, by a suitably qualified and experienced archaeologist in consultation with the Secretary and Aboriginal stakeholders, assessment of the consistency of any Aboriginal heritage impacts against the approved impacts of the SSD, and, where relevant, registration in the OEH's Aboriginal Heritage Information Management System (AHIMS) register;	Table 8 Attachment D (Unexpected Finds Procedure)
E34 c)	c) procedures for dealing with human remains, including cessation of works in the vicinity, notification of Secretary, NSW Police Force, OEH and Aboriginal stakeholders, and commitment to cease recommencing any works in the area unless authorised by the OEH and/or the NSW Police Force;	Attachment D (Unexpected Finds Procedure)
E34 c)	d) heritage training and induction processes for construction personnel (including procedures for keeping records of inductions) and obligations under the conditions of this approval including site identification, protection and conservation of Aboriginal cultural heritage; and	Section 4.2
E34 c)	e) procedures for ongoing Aboriginal consultation and involvement for the duration of construction; and	Section 3.1 Section 3.1.1
E34 c)	(ii) in relation to non-Aboriginal Heritage:	This Plan
E34 c)	a) identification of heritage items directly and indirectly affected by construction;	Section 6.3
E34 c)	b) consideration of methods to prevent damage to any retained heritage items, including:	Rail Link works not expected to impact on retained heritage items.
E34 c)	l. procedures for identifying minimum working distances to retained heritage items (including, at minimum, vibration testing and monitoring),	Rail Link works not expected to impact on retained heritage items. Section 6.3

Attachments

Stage 1 CoA Ref	Requirement	Where Addressed
E34 c)	II. detailed options for alteration of construction methodology should preferred values for vibration be exceeded, and	Rail Link works not expected to impact on retained heritage items. Section 6.3
E34 c)	III. commitment to implementing those options if preferred values for vibration are likely to be exceeded.	Rail Link works not expected to impact on retained heritage items. Section 6.3 Section 7.2 CNVMP
E34 c)	c) details of management measures to be implemented to prevent and minimise impacts on heritage items (including further heritage investigations, archival recordings and/or measures to protect unaffected sites during construction works in the vicinity);	Section 7.1 Table 8 Attachment D (Unexpected Finds Procedure)
E34 c)	d) details of monitoring and reporting requirements for impacts on heritage items;	Section 8 Attachment D (Unexpected Finds Procedure)
E34 c)	e) procedures for dealing with previously unidentified heritage objects, (including cessation of works in the vicinity, assessment of the significance of the item(s) and determination of appropriate mitigation measures including when works can re-commence by a suitably qualified and experienced archaeologist in consultation with the OEH, NSW Heritage Council and the Secretary, assessment of the consistency of any heritage impacts against the approved impacts of the SSD, and, where relevant, notification of the Heritage Council of NSW in accordance with section 146 of the <i>Heritage Act 1977</i> ; and	Attachment D (Unexpected Finds Procedure)
E34 c)	f) heritage training and induction processes for construction personnel (including procedures for keeping records of inductions and obligations under this approval including site identification, protection and conservation of non-Aboriginal cultural heritage; and	Section 4.2
E34 c)	(iii) mechanisms for the monitoring, review and amendment of this plan.	Section 8 CEMP (Part B, Element 12)

Stage 1 Final Compilation of Mitigation Measures

Table 11: Stage 1 Final Compilation of Mitigation Measures

Stage 1 FCMM Ref	Requirement	Where Addressed
9	Aboriginal Heritage	
9A	Consultation will be maintained with the Aboriginal stakeholders during the finalisation of the Proposal in order to identify long-term curation and management of the Aboriginal objects recovered through the archaeological program (including open salvage excavation).	MA14 Salvage Strategy Section 3.1.1
	Mitigation measures included in Section 9 of the draft Aboriginal Heritage Impact Assessment (AHMS, 2015) in relation to Aboriginal site, MA14 (artefact scatter and deposit) on the eastern bank of Georges River would be implemented during salvage works.	MA14 Salvage Strategy

Attachments

Stage 1 FCMM Ref	Requirement	Where Addressed
9B	All relevant personnel and contractors involved in the design of the Proposal will be advised of the relevant heritage considerations, legislative requirements and recommendations in the draft Aboriginal Heritage Impact Assessment (AHMS, 2015)	Section 4.2
9C	Management of Aboriginal heritage will be managed through the CEMP for the Proposal. The CEMP will include the following at a minimum:	This Plan
	A summary of the findings of the draft Aboriginal Heritage Impact Assessment (AHMS, 2015)	Section 5.1 Section 6.2
	Measures to be implemented in the event of an unexpected archaeological and cultural finds (including human remains)	Attachment D (Unexpected Finds Procedure)
10	All relevant personnel and contractors involved in the construction of the Proposal will be advised of the relevant heritage considerations, legislative requirements and recommendations in the draft Aboriginal Heritage Impact Assessment (AHMS, 2015)	Section 4.2
	Installation of temporary fencing for the protection of the riparian corridor along the western bank of the Georges River	Table 8 CSWMP (PESCP)
	Areas that have been subject to assessment in the draft Aboriginal Heritage Impact Assessment (AHMS, 2015) should be clearly identified on construction plans. Should construction activities be proposed to extend beyond this boundary, appropriate heritage investigations will be undertaken to identify and manage Aboriginal objects/ sites/ places that may be in the additional area(s).	Construction Area Plan Site Environmental Plan
	Non-Indigenous Heritage	
10A	A full photographic record of the SIMTA site should be made prior to Stage 1 construction commencing. This will record the setting and context of the site as a whole prior to any impact on collective significance.	Not applicable to the Rail Link
10B	A heritage interpretation strategy will be prepared, which could include interpretative mediums such as plaques and displays (subject to a suitable area being located) and online resources.	Not applicable to the Rail Link
10C	A Heritage Management Plan in adherence to NSW Heritage Council guidelines will be prepared as part of the CEMP for the Stage 1 Proposal. At a minimum the following measures will be included within the Heritage Management Plan:	This Plan
	Archaeological monitoring during construction will be conducted for a representative sample of the sites PADs F and G (to the south, and south west of Building No. 11, respectively) of former structures. Excavation of these sites will be directed by an Excavation Director, who is experienced in investigations of locally significant archaeology.	Not applicable to the Rail Link unless unexpected finds are encountered.
	The archaeologist will assess the likely significance of any archaeological deposits encountered, and provide advice regarding appropriate further action.	Not applicable to the Rail Link unless unexpected finds are encountered.
	If unexpected finds are located during works, an archaeological consultant will be engaged to assess the significance of the finds and the NSW Heritage Council notified. Further archaeological work or recording may be recommended.	Attachment D (Unexpected Finds Procedure)

NSW Concept Plan Conditions of Approval

Table 12: NSW Concept Plan Conditions of Approval

NSW Concept Plan CoA Ref	Requirement	Where Addressed
2.8	Any future Development Application shall assess heritage impacts of the proposal. The assessment shall:	Stage 1 EIS
a)	Consider impacts to Aboriginal heritage (including cultural and archaeological significance), in particular impacts to Aboriginal heritage sites identified within or near the project should be assessed. Where impacts are identified, the assessment shall demonstrate effective consultation with Aboriginal communities in determining and assessing impacts and developing and selecting options and mitigation measures (including the final proposed measures); and	Stage 1 EIS
b)	Consider impacts to historic heritage. For any identified impacts, the assessment shall: <ul style="list-style-type: none"> i. Outline the proposed mitigation and management measures (including measures to avoid significant impacts and an evaluation of the effectiveness of the measures). Mitigation measures should include (but not be limited to) photographic archival recording and adaptive re-use of buildings or building elements on site) ii. Be undertaken by a suitably qualified heritage consultant(s); and iii. Include a statement of heritage impact. 	Stage 1 EIS

NSW Concept Plan Revised Statement of Commitments

Table 13: NSW Concept Plan Revised Statement of Commitments

NSW Concept Plan Revised SoC Ref	Requirement	Where Addressed
	Indigenous Heritage	
2.01	The Proponent commits to the implementation of the following General Mitigation Measures in the Aboriginal Cultural Heritage Assessment and including	This Plan
a)	Consultation between SIMTA and relevant Registered Aboriginal Parties (RAPs) throughout the design and construction of the SIMTA proposal.	Stage 1 EIS MA14 Salvage Strategy, Program Section 3.1 Section 3.1.1 Attachment C (Stakeholder Consultation Responses)
b)	Where possible, SIMTA should aim to avoid impacting any known Aboriginal heritage objects, sites or places and places that have potential Aboriginal heritage or cultural values, throughout the life of the SIMTA proposal.	Stage 1 EIS Table 8
c)	Where impact cannot be avoided, SIMTA should choose partial impact rather than complete impact wherever possible and ensure that appropriate measures to mitigate impacts are developed and implemented as required and as appropriate during design, construction and operation of the various stages of the SIMTA proposal.	Stage 1 EIS Table 8

Attachments

NSW Concept Plan Revised SoC Ref	Requirement	Where Addressed
d)	If relocation of any element of the SIMTA proposal outside area assessed in this study is proposed, further assessment of the additional area(s) should be undertaken to identify and appropriately manage Aboriginal objects/sites/places that may be in this additional area(s).	Stage 1 EIS Design
e)	In the event that previously undiscovered Aboriginal objects, sites or places (or potential Aboriginal objects, sites or places) are discovered during construction, all works in the vicinity of the find should cease and SIMTA should determine the subsequent course of action in consultation with a heritage professional, relevant Registered Aboriginal Parties and/or the relevant State government agency as appropriate.	Section 3.1.1 Table 8 Attachment D (Unexpected Finds Procedure)
f)	Should suspected human skeletal material be identified, all works should cease and the NSW Police and the NSW Coroner's office contacted. Should the burial prove to be archaeological of Aboriginal origin, consultation with a heritage professional, relevant RAPs and/or the relevant State government agency, should be undertaken by SIMTA.	Section 3.1.1, Table 8 Attachment D (Unexpected Finds Procedure)
g)	SIMTA should ensure that any reports or documents for the SIMTA proposal concerning Aboriginal heritage comply with applicable statutory requirements (those currently applicable are outlined in this report), are prepared in accordance with best practice professional standards and, where appropriate, ensure findings are provided to OEH AHIMS Registrar and the relevant RAPs.	Table 8 Attachment D (Unexpected Finds Procedure)
2.02	The Proponent commits to the implementation of the following Site Specific Mitigation Measures:	This Plan
a)	To ensure cultural values of land affected by the rail link are appropriately characterised and assessed, Aboriginal consultation should continue to be undertaken in accordance with applicable guidelines and requirements.	Stage 1 EIS MA14 Salvage Strategy, Program Section 3.1 Section 3.1.1 Attachment C (Stakeholder Consultation Responses)
b)	Where potentially impacted by the proposed rail link footprint, the artefacts identified in Transect 1 on the SIMTA site, and Transect 7 immediately south of the SIMTA site, should be collected by RAPs in conjunction with a heritage professional before construction commences. A Care and Control Agreement should be completed between SIMTA and the RAPs regarding the future of the artefacts (it is usually preferred that they be reburied nearby).	Stage 1 EIS MA14 Salvage Strategy, Program
c)	Given the extensive historical disturbance within the remainder of the SIMTA site, it is considered that the likelihood of the presence of intact or significant Aboriginal objects and/or sites is low and no further archaeological investigations are warranted in these remaining areas;	Noted
d)	In relation to the proposed rail link footprint, with the exception of PADs 1 - 3 (Figure 33), it is considered that the likelihood of the presence of intact or significant Aboriginal objects and/or sites is low and no further archaeological investigations are warranted in the remaining areas;	Noted

Attachments

NSW Concept Plan Revised SoC Ref	Requirement	Where Addressed
e)	Areas within 50 metres of the eastern and western banks of the Georges River, should not be impacted without further assessment.	Stage 1 EIS
f)	The detailed application for the first stage of works shall include test excavations in each of PADs 1 - 3 in accordance with current archaeological practice and any relevant guidelines to determine the nature, extent and significance of any Aboriginal archaeological deposit. Such testing would be undertaken under Section 75U of the <i>Environmental Planning and Assessment Act 1979</i> , and be used to inform the assessment of these areas prior to lodgement of the subsequent staged application.	Stage 1 EIS
2.03	Where the detailed design of the rail link would result in disturbance to a potential archaeological deposit or an area of potential archaeological value the detailed application for that stage of works shall include test excavations in those areas that may be disturbed in accordance with current archaeological practice and any relevant guidelines to determine the nature, extent and significance of any Aboriginal archaeological deposit. Such testing would be undertaken under Section 75U of the <i>Environmental Planning and Assessment Act 1979</i> , and be used to inform the assessment of these areas prior to lodgement of the subsequent staged application.	Stage 1 EIS
	Non-Indigenous Heritage	
2.04	The proponent commits to undertaking the recommendations within the Non-Indigenous Heritage report and including:	
a)	Preparing a Statement of Heritage Impact (SoHI) for submission to the Minister for Planning and Infrastructure as part of staged planning applications at State level.	Stage 1 EIS
b)	Commencing discussions with the appropriate heritage bodies regarding the potential listing of the DNSDC site on the National Heritage List or the State Heritage Register.	Not applicable to the Rail Link
c)	Preparing a Statement of Heritage Impact for each stage, including the legal status of the site and advice on required actions depending on whether the site is listed or unlisted at the time that approval is sought.	Stage 1 EIS
d)	Development of an overall mitigation strategy for the DNSDC site, which may be based on Table 3 of the Non Indigenous Heritage report.	Not applicable to the Rail Link
e)	Undertaking further archaeological assessment and investigation or monitoring, where required in areas designated as having archaeological potential that would be impacted by the proposal. The SoHIs for each stage should address the archaeological potential within the development area for each stage	Stage 1 EIS
f)	If any archaeological deposit or item of heritage significance is located within the study area and is at risk of being impacted, the NSW Heritage Council should be notified and a heritage consultant archaeologist should be engaged to assess the item to determine its heritage significance.	Stage 1 EIS
2.05	The potential visual impact of the proposed rail corridor shall be mitigated by the use of screening vegetation and terracing or earth mounding to soften the impact of the flyover.	Design UDLP

Commonwealth Concept Plan Approval

Table 14: Commonwealth Concept Plan Approval

Commonwealth CoA Ref	Requirement	Where Addressed
	Construction Environment Management Plan	
7	For the better protection of Commonwealth land, the person taking the action must engage a suitably qualified expert(s) to prepare a Construction Environment Management Plan (CEMP), for the approval of the Minister. The CEMP must include in relation to construction of the proposed facility:	CEMP
b)	identification and quantification of all potential impacts associated with noise, vibration, air quality, traffic, light spill, hydrological changes, contamination, and indigenous heritage (including cumulative impacts associated with the DoFs proposed intermodal) upon Commonwealth land. Consideration must be given to people and communities at SME, DNSDC, Defence housing, and the environment more generally in neighbouring bushland areas. Of note, the air quality assessment must quantify emissions arising from air pollutant sources for which there are established national air quality standards;	This Plan Other Aspect Specific Management Plans
c)	the results of further investigations with regard to land contamination and indigenous heritage impacts (specifically, PADs two and three). If adverse impacts are identified, details on how such matters will be managed/mitigated must also be provided. Evidence of ongoing consultation with RAPs regarding further investigations for indigenous heritage objects/places must be provided;	Stage 1 EIS Table 8 Section 3.1 Section 3.1.1 Attachment C (Stakeholder Consultation Responses) MA14 Salvage Strategy, Program and Report
d)	refined details (including implementation timeframes) for the mitigation measures outlined in the EIS (sections 7.4.2, 7.4.3, 7.4.6, 7.4.7, 7.4.8 and 7.4.9) and summarised at Annexure A;	Table 8
g)	details of a comprehensive monitoring program (including locations, frequency and duration) for: i. validating the anticipated impacts associated with condition 7(b); and ii. determining the effectiveness of proposed mitigation/management measures;	Section 8 MA14 Salvage Strategy, Program and Report
h)	provisions to revise the approved CEMP in response to monitoring associated with condition 7(g) including, details of response/contingency mechanisms to address any exceedances of the relevant trigger values;	Section 8 CEMP (Part B, Element 12)
i)	evidence of consultation with Defence regarding the adequacy of proposed mitigation measures in particular, those measures to mitigate potential light spill impacts upon residential dwellings within SME outside of standard construction hours; and	Section 3.1 Attachment C (Stakeholder Consultation Responses)
	Administrative Conditions	

Attachments

Commonwealth CoA Ref	Requirement	Where Addressed
Notes:	Management plans referred to in conditions 5 to 8 may be reorganised for administrative efficiency provided that all specified requirements are addressed and that each document is submitted with a clear description of the condition(s) it is intended to satisfy. For example, management plans may be further aggregated or disaggregated by construction stage, geographic area or management theme (including by 'species' in the case of condition 6). Where a plan is used to satisfy the requirements of both the State and the Commonwealth, that plan must clearly articulate where each of the Commonwealth's conditional criteria have been addressed within that plan.	Noted

Commonwealth Concept Plan Mitigation Measures

Table 15: Commonwealth Concept Plan Mitigation Measures

C'th Concept Plan MM Ref	Requirement	Where Addressed
7.4.4	European Heritage	
7.4.4.1		
a)	Preparing a Statement of Heritage Impact (SoHI) for submission to the NSW Minister for Planning and Infrastructure as part of staged planning applications at State level.	Stage 1 EIS
b)	Commencing discussions with the appropriate heritage bodies regarding the potential listing of the DNSDC site on the National Heritage List or the State Heritage Register.	Not applicable to the Rail Link
c)	Development of an overall mitigation strategy for the DNSDC site, which may be based on Table 81.	Not applicable to the Rail Link
d)	Undertaking further archaeological assessment and investigation or monitoring, where required in areas designated as having archaeological potential that would be impacted by the proposal. The SoHIs for each stage should address the archaeological potential within the development area for each stage.	Stage 1 EIS
e)	If any archaeological deposit or item of heritage significance is located within the study area and is at risk of being impacted, the NSW Heritage Council should be notified and a heritage consultant/archaeologist should be engaged to assess the item to determine its heritage significance.	Table 8 Attachment D (Unexpected Finds Procedure)
f)	The potential visual impact of the proposed rail link on Glenfield Farm shall be mitigated by the use of screening vegetation along Moorebank Avenue.	Design UDLP
7.4.4.2	<u>Stage 1A</u>	
a)	Archival recording according to the DNSDC site mitigation strategy (to be developed) will be undertaken prior to works commencing.	Not applicable to the Rail Link

Attachments

C'th Concept Plan MM Ref	Requirement	Where Addressed
b)	Archaeological monitoring should be conducted for a representative sample of the sites of former structures that will be subject to proposed subsurface impacts for Stage 1A. Monitoring should be undertaken by a suitable archaeologist with Excavation Director Criteria qualifications, who will assess the likely significance of any archaeological deposits encountered, and provide advice regarding appropriate further action. If highly significant remains were identified during monitoring, it might be appropriate to conduct further monitoring for additional sites of former structures. A comprehensive archaeological research design should be prepared for the archaeological monitoring once the details of the proposed development have been finalised.	Stage 1 EIS No impacts expected from Rail Link works to European Heritage items
c)	Possible vibratory impacts to the three WWII-era buildings located adjacent to the Stage 1A area should be monitored in accordance with any recommendations made in the vibration assessment as included within Section 7.3.7.	No impacts expected from Rail Link works to European Heritage items
d)	A Heritage Management Plan in adherence to NSW Heritage Council guidelines should be prepared as part of the Construction Environmental Management Plan for the project.	This Plan
e)	If unexpected finds are located during works the NSW Heritage Council will be notified and an archaeological consultant engaged to assess the significance of the finds. Further archaeological work or recording may be recommended. The process for managing such finds will be confirmed with Defence, the Department of the Environment and NSW Heritage Council and documented within the Construction Environmental Management Plan.	Attachment D (Unexpected Finds Procedure)
7.4.5	Indigenous Heritage	
7.4.5.1	<u>Construction</u> The following design and construction mitigation measures were identified as part of the Aboriginal Cultural Heritage Assessment (AHMS 2012):	This Plan
a)	Consultation between SIMTA and relevant Registered Aboriginal Parties (RAPs) will be maintained throughout the design and construction of the SIMTA proposal.	Section 3.1.1 MA14 Salvage Strategy, Program
b)	Where impact cannot be avoided, SIMTA will choose partial impact rather than complete impact wherever possible and implement measures to mitigate impacts as required and as appropriate during design and construction of the various stages of the SIMTA proposal.	Table 8
c)	If re-location of any element of the SIMTA proposal outside areas assessed within the Aboriginal Cultural Heritage Assessment (AHMS, 2012) is proposed, further assessment of the additional area(s) will be undertaken to identify and appropriately manage Aboriginal objects/sites/places that may be in this additional area(s).	Stage 1 EIS Table 8
d)	In the event that previously undiscovered Aboriginal objects, sites or places (or potential Aboriginal objects, sites or places) are discovered during construction, all works in the vicinity of the find will cease and SIMTA will determine the subsequent course of action in consultation with a heritage professional, relevant RAPs and/or the relevant State government agency as appropriate.	Attachment D (Unexpected Finds Procedure)

Attachments

C'th Concept Plan MM Ref	Requirement	Where Addressed
e)	Should suspected human skeletal material be identified, all works will cease and the NSW Police and the NSW Coroner's office contacted. Should the burial prove to be archaeological of Aboriginal origin, consultation with a heritage professional, relevant RAPs and/or the relevant State government agency, will be undertaken by SIMTA.	Attachment D (Unexpected Finds Procedure)
f)	SIMTA will verify that reports or documents for the SIMTA proposal concerning Aboriginal heritage comply with applicable statutory requirements (those currently applicable are outlined in this report), are prepared in accordance with best practice professional standards and, where appropriate, provide findings to OEH AHIMS Registrar and the relevant RAPs.	Stage 1 EIS MA14 Salvage Strategy Table 8 Attachment D (Unexpected Finds Procedure)
g)	To appropriately characterise and assess cultural values for both the SIMTA site and rail corridor, Aboriginal consultation will continue to be undertaken in accordance with applicable guidelines and requirements.	Stage 1 EIS Section 3.1 Section 3.1.1 Attachment C (Stakeholder Consultation Responses)
h)	The artefacts identified in Transect 1 on the SIMTA site, and Transect 7 immediately south of the SIMTA site, will be collected by RAPs in conjunction with a heritage professional before construction commences.	Stage 1 EIS
i)	A Care and Control Agreement will be completed between SIMTA and the RAPs regarding the future of the artefacts (it is usually preferred that they be reburied nearby).	MA14 Salvage Strategy, Program
j)	Any areas outside those investigated as part of this assessment, most notably those areas within 50 metres of the eastern and western banks of the Georges River, will not be impacted without further assessment.	Stage 1 EIS
k)	Areas of the study area in close proximity to Georges River and the south-western most corner of the proposed rail corridor, which could not be adequately investigated due to access issues, will be investigated further prior to direct or indirect impact in this area.	Stage 1 EIS
l)	If significant Aboriginal site(s) are identified during test excavations of PADs 1, 2 or 3, then design of the SIMTA proposal to avoid such sites(s) is the preferred option. However, if it is not considered possible to avoid such site(s), then salvage excavations of the PADs, in accordance with current archaeological practice any relevant guidelines and in consultation with the RAPs, will be undertaken to gather as much information on the site(s) as possible prior to disturbance.	MA14 Salvage Strategy, Program
m)	Any proposed impacts to mature trees (greater than 80 years old) in the golf course will be avoided.	Table 8
n)	If avoidance is not feasible, any mature trees that will be impacted by the proposed development will be inspected to identify any potential Aboriginal cultural scarring.	Table 8
o)	Should the survey identify any trees with potential cultural scarring, further heritage assessment and/or mitigation measures may need to be developed.	Table 8

Attachment B: Glossary

The following table outlines key terms used in this document and associated procedures:

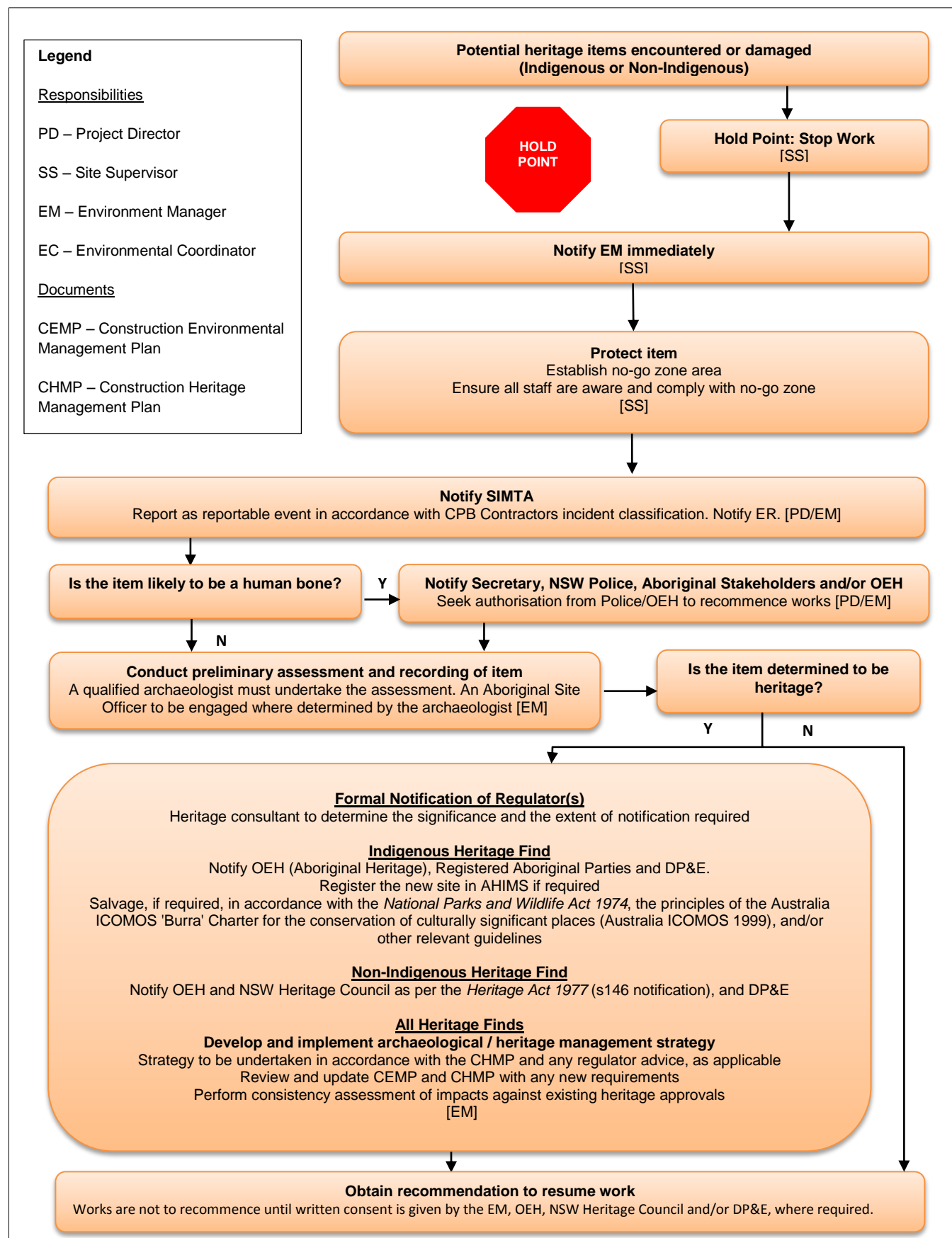
Term	Definition
AHIMS	Aboriginal Heritage Information Management System
ARTC	Australian Rail Track Corporation
CBD	Central Business District
CAP	Construction Area Plan – The main document prepared during the construction planning for that work area. Includes construction methodology, risk assessment, constructability reviews and Work Pack listing.
CBNTCAC	Cubbitch Barta Native Title Claimants Aboriginal Corporation
CCC	Campbelltown City Council
CEMP	Construction Environmental Management Plan
CHMP	Construction Heritage Management Plan
CoA	Condition of Approval
DACHA	Darug Aboriginal Cultural Heritage Assessments
DALI	Darug Aboriginal Landcare Inc
DCAC	Darug Custodian Aboriginal Corporation
DLO	Darug Land Observations
DTAC	Darug Tribal Aboriginal Corporation
DNSDC	Defence National Storage and Distribution Centre
DotE	Department of the Environment (Commonwealth)
DP&E	Department of Planning and Environment
EIS	Environmental Impact Statement
EP&A Act	<i>Environmental Planning and Assessment Act 1979</i>
EP&A Regulation	Environmental Planning and Assessment Regulation 2000
EPBC Act	<i>Environmental Protection and Biodiversity Conservation Act 1999</i> (Commonwealth)
EPBC Approval	Approval (No. 2011/6229) granted under the EPBC Act on March 2014 by the Commonwealth Department of the Environment for the development of the SIMTA IMT Facility at Moorebank.
EPL	Environment Protection Licence
IMEX	Import / Export
LALC	Local Aboriginal Land Council
LCC	Liverpool City Council
LEP	Local Environmental Plan
LGA	Local Government Area

Attachments

Term	Definition
MIC	Moorebank Intermodal Company
MIC Project	Moorebank Intermodal Terminal Project (SSD-5066) approved under Part 4, Division 4.1 of the <i>Environmental Planning and Assessment Act 1979</i>
NSW	New South Wales
OEH	Office of Environment and Heritage
RailCorp Land	Lot 1 DP 825352 (part of the Rail Corridor) and owned by RailCorp
RALP No. 1	Rail Access Land Package No. 1 (this Project)
RAPs	Registered Aboriginal Parties
SIMTA	Sydney Intermodal Terminal Alliance – a consortium comprising Qube Holdings and Aurizon
SME	School of Military Engineering
SSD	State Significant Development
SSFL	Southern Sydney Freight Line
Stage 1 Site	The subject of this EIS, the western part of the SIMTA site which includes all areas to be disturbed by the Stage 1 Proposal (including the Operational area and Indicative Construction area). This area does not include the Rail Corridor.
TEU	Twenty-foot Equivalent Unit
Work Area	A separable portion of work that is identified early in construction planning to help drive early definition of construction methodology and alignment of design activities. Work Areas should be listed in the overall construction methodology. The planning document for a work area is called a Construction Area Plan.
Work Pack	A pack of relevant construction documents that contains relevant information for Site Engineers and foremen to manage the works. There will be multiple Work Packs contained in a CAP. A Work Pack contains work method statements, risk assessments, ITPs, drawings, site instructions, environmental controls, etc.
Work Procedure	A document that provides a detailed step-by-step description for how work activities will be carried out. May document Risks & Controls associated with each step

Attachment C: Stakeholder Consultation Responses

Attachment D: Unexpected Heritage Finds Procedure



1 Introduction

1.1 Objectives

To provide guidance for the on-site management of an unexpected actual or potential heritage item (indigenous or non-indigenous).

1.2 Training

All personnel to receive heritage training and inductions.

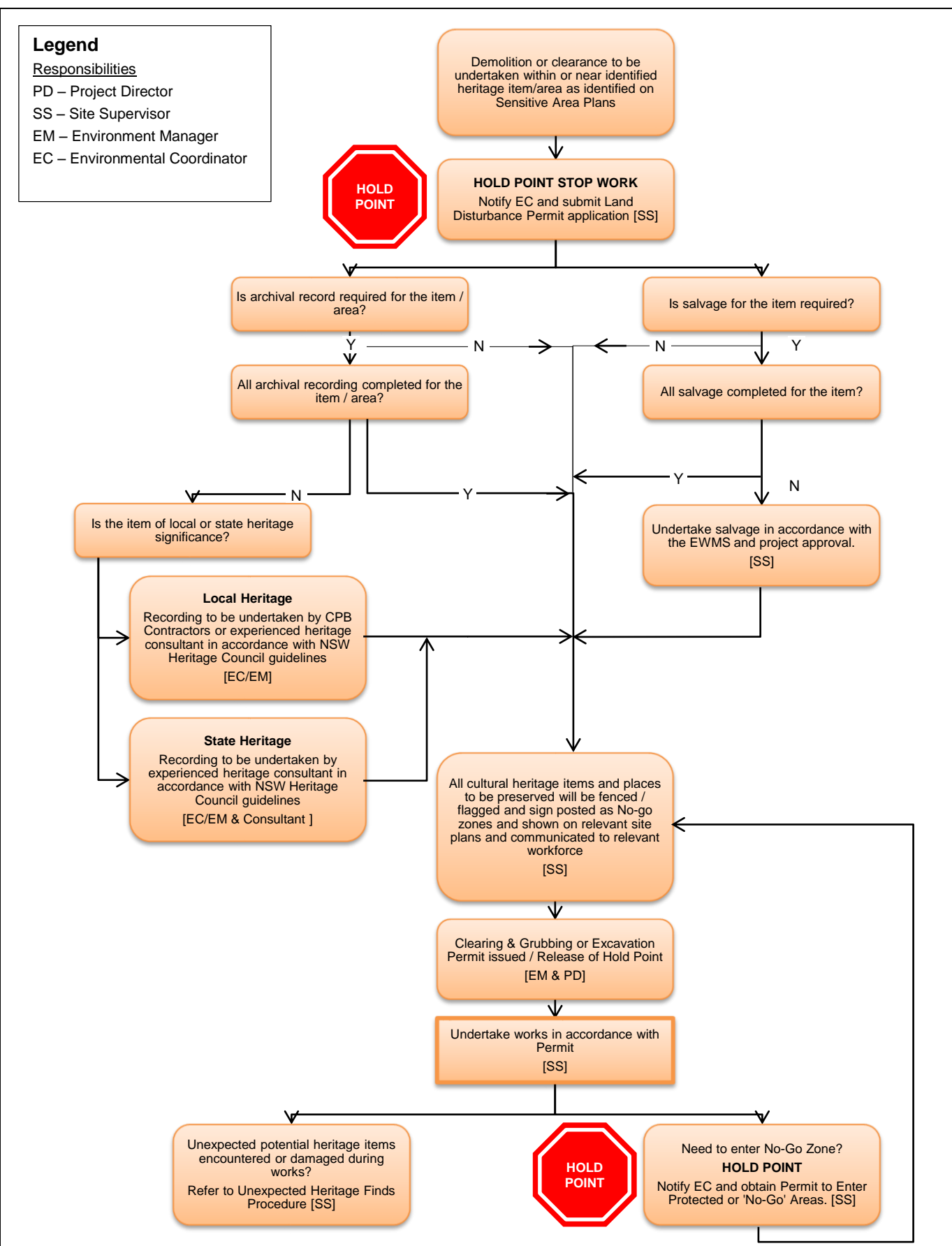
2 Procedure

The steps in the flow chart must be followed in the event of the discovery of a potential heritage item during construction. No work is to recommence until the Environment Manager has issued a written confirmation.

2.1 Archaeological / Heritage Management Strategy

In the event that historical archaeological relics of State or local significance are identified, a strategy comprising either an archaeological work method statement or archaeological research design must be prepared by a qualified archaeologist. This strategy must outline a methodology for the investigation, salvage and/or conservation of archaeological resources and must be prepared in alignment with the CHMP (including its environmental safeguards), where applicable.

Attachment E: Heritage Management Procedure



Introduction

1.1 Objectives

This procedure provides guidance for the on-site management of indigenous or non-indigenous heritage. The objectives of this procedure are to implement measures to protect all known indigenous or non-indigenous heritage items that are not directly impacted by the project during construction. It does not cover the process to be followed in the event of an unexpected heritage find – refer to the Unexpected Heritage Finds procedure.

1.2 Training

- All personnel to receive heritage training and inductions.

2 Procedure

This procedure is to be implemented for the management of known heritage areas and items, as shown on the Sensitive Area Plans, during construction. In the event that an unexpected heritage item is encountered or damaged, the Unexpected Heritage Finds procedure should be followed.

2.1 Internal Notifications

The following occurrences must be reported to the Supervisor immediately:

- Discovery / disturbance of known or possible heritage items or places
- Entering or modifying a no-go zone
- Damage to no-go zone fencing or signage.

2.2 Archival Recording

Any required archival recording is to be undertaken in accordance with the guidelines *Photographic Recording of Heritage Items Using Film or Digital Capture* (NSW Heritage Office, 2006). Archival recordings are prepared to record the environment, aesthetic, technical skills and customs associated with the creation and use of heritage items before they are lost. Minimum requirements for archival recording, as identified by the guidelines, are summarised in Table 1. Requirements for recording of items involving historical archaeological evidence, industrial archaeological evidence, significant underwater archaeological evidence, evidence of significant social customs and significant cultural landscapes are also considered in this guideline.

Table 1: Minimum Requirements for Archival Recording

Requirements	Commissioned by Local Council	Commissioned by NSW Heritage Council / State Government
Recording undertaken by	Qualified heritage consultant	Qualified heritage consultant
Hardcopy Report	✓	✓
Title Page	✓	✓
Introduction: why record was made, brief history, and method	✓	✓
Technical details, including camera and lenses, image file size and format, metadata	✓	✓
List of all images, correctly numbered and described (catalogue)	✓	✓
Photographic maps/plans, showing order in which photos were taken, the location of the camera, and direction each photograph	✓	✓
Thumbnail image proof sheets (archival quality)	✓	✓

Requirements	Commissioned by Local Council	Commissioned by NSW Heritage Council / State Government
Digital storage media (eg. DVD), containing electronic image files saved as RAW and TIFF files with associated metadata, and cross-referenced to catalogue	✓	✓
Printed selection of representative images (archival quality)	✓	✓
Lodgement with appropriate archives	<ul style="list-style-type: none"> ▪ Local Council ▪ Local library for public access ▪ Owner/Client 	<ul style="list-style-type: none"> ▪ NSW Heritage Division ▪ State Library of NSW for public access ▪ Owner/Client
Requirements	Commissioned by Local Council	Commissioned by NSW Heritage Council / State Government

2.3 Salvage

Items requiring salvage will be identified by the Environment Manager and project heritage consultant.

Any required salvage will be completed in accordance with any approved Salvage Strategy and Environmental Work Method Statement; to be reviewed by the Environment Manager prior to works commencing.