



Moorebank Logistics Park Newsletter

New owners with an exciting future

Leading Asia-Pacific logistics specialist LOGOS and its partners are pleased to announce the acquisition of warehouse construction and operation of Moorebank Logistics Park, following Qube's sale of the project in December 2021.

LOGOS joined with existing partners Ivanhoe Cambridge, AustralianSuper, and TCorp (NSW Treasury Corporation) as well as a new partner, AXA-IM, to purchase the 243-hectare project, with a deep commitment to furthering the logistics, e-commerce and distribution landscape in Australia.

“

This acquisition positions the LOGOS Consortium at the heart of a logistics revolution. Our collective vision for MLP represents a fundamental shift in east coast logistics, as a fully automated port-to-site rail link. The high levels of automation across the intermodals and warehousing will drive significant long-term cost advantages and improve supply chain predictability, which will offer important labour efficiency and stock availability.

- LOGOS Head of Australia and New Zealand,
Darren Searle

”

The project is expected to deliver over \$11 billion in economic benefits via improved productivity and reduced business costs with an expected 6,800 jobs to be created.

The scale of a logistics site with this range of benefits, within a 30-minute drive of a major global CBD, has not been seen in Australia before. Whilst Qube is to retain the full ownership of the IMEX Rail Terminal and majority ownership of the future Interstate Rail Terminal, new owners LOGOS plan exciting times ahead.

Moving forward together

Over the last quarter we have endured significant storms. We trust you are all safe and well. Whilst the rain has delayed certain site activities, disruptions to the public roads have been minimal. Please know that our diligent team are working to safeguard the site against future downfalls where possible. We apologise for any inconvenience caused during this time and appreciate your understanding.



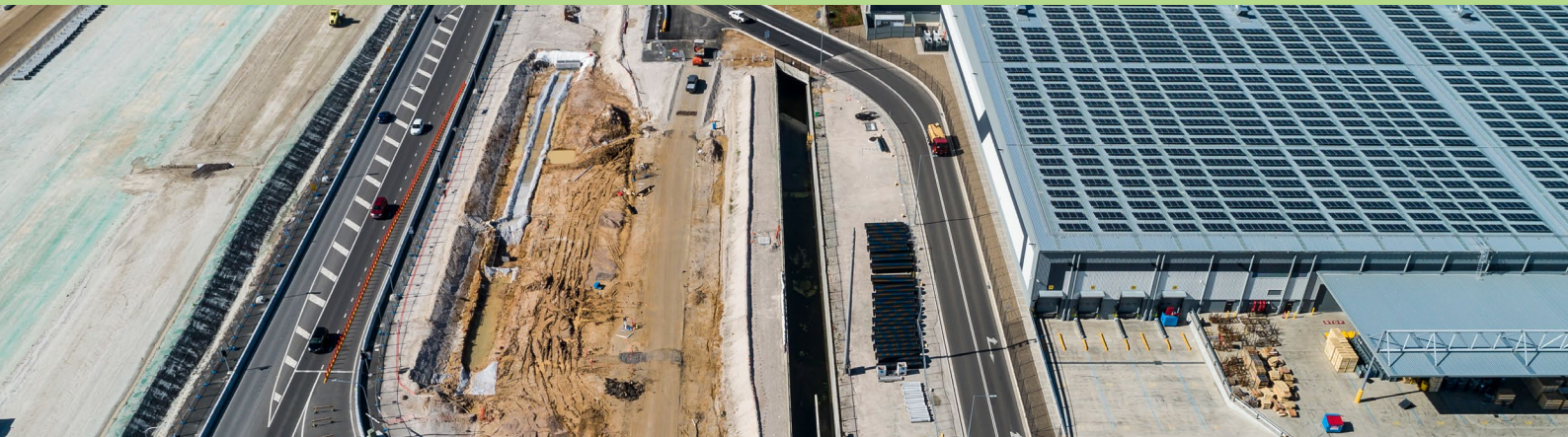
Moorebank electricity upgrade

Consultation will shortly be underway with the community ahead of a power upgrade to the electricity network which feeds the Moorebank site. Further information on the project and how to provide feedback will be available on the SIMTA website in May 2022.

Progress on Moorebank Avenue upgrade

Progress continues on the Moorebank Avenue upgrade by our builder BMD Contractors. Services for the new road and drainage system have been prepared and are being installed, creating a new road that will dramatically reduce flooding and pavement damage after rainfall. Connections have also been built to the MLP rail terminal east of Moorebank Avenue.

The team has been working closely with Transport for NSW, to finalise plans for the Moorebank Avenue and Anzac Road intersection upgrade. This includes new access arrangements, an upgrade to Bapaume Road, and a new entry into Moorebank Logistics Park. Upgrades will tie in with the new Moorebank Avenue diversion, taking traffic to the east of our site, separating intermodal-related traffic and public vehicles travelling between Moorebank and Glenfield.



Celebrating the start of the Interstate Intermodal Rail Terminal

On 6 April 2022, a ground breaking ceremony was held to mark the commencement of construction of the new Interstate Intermodal Rail Terminal. Despite the wet weather, it was a fantastic turnout and celebration of the works underway at MLP.

The Minister for Communications, Urban Infrastructure, Cities and the Arts, the Hon Paul Fletcher MP, attended on behalf of himself and the Minister for Finance, the Hon Simon Birmingham, and emphasised the importance of investing in infrastructure like the intermodal to drive transformation in the movement of freight. Minister Fletcher noted this was a major milestone in the delivery of the new interstate freight terminal which once complete, will strengthen interstate supply chain resilience, taking thousands of trucks off local roads each day.

“The environmental impacts are significant, with rail three times more carbon efficient than road per tonne of freight transported. Once fully operational, the precinct will take up to 3,000 truck movements off Sydney roads each day, reducing up to 110,000 tonnes of carbon dioxide emissions per year,” Minister Fletcher said.

“

The innovative Joint Development Model (National Intermodal Corporation, Qube & LOGOS) will ensure the Interstate Terminal not only delivers long-term value for the Moorebank precinct, but boosts market confidence that freight can move between states efficiently, safely, and sustainably.

- CEO of the National Intermodal Corporation, James Baulderstone

”



Moorebank’s success launches national intermodal agency

Leveraging off the success of Moorebank Intermodal Terminal, the Federal Government has announced Moorebank Intermodal Company will have its mandate expanded and become known as National Intermodal Corporation.

The new Corporation will play a key role in supporting the delivery of interconnected intermodal terminals in Melbourne and Brisbane, to support the completion of the Federal Government’s \$14.5 billion Inland Rail project.

As it has at Moorebank, the Federal Government’s significant investments in these terminals will drive improved freight outcomes and increase competition in the sector, lowering prices for consumers. In surrounding communities, a significant number of new local jobs are created, heavy vehicle movements are dramatically reduced, and greenhouse gas emissions are slashed.

“


The success of National Intermodal will be measured by our ability, working together with governments and industry, to ensure nationally significant world-class rail infrastructure is designed and built, enhancing rail’s competitiveness, and capturing an increasing share of the interstate freight market.


- CEO James Baulderstone


”


Contact Us

For further information please get in touch

 www.simta.com.au
for more information

 call 1800 986 465

 Level 15, 207 Kent Street,
Sydney NSW 2000

 or send written enquiries
or feedback to
moorebank@tsamgt.com