

COMMUNITY NEWS UPDATE

As construction of the Moorebank Intermodal Terminal Precinct now commences under the approvals that have been granted, there are a number of other planning processes also underway about which we want to keep you updated.

The precinct will be developed over a number of stages and each of those will require additional applications under the already approved Concept plan. For those not familiar with these processes, it can be difficult to follow. We will be staying in touch to explain each step along the way and how you can provide your feedback to us or make submissions to the NSW Department of Planning and Environment (DP&E).

As part of that consultation, regular newsletters will be distributed. This edition offers an update on early works, details on how to respond to our Moorebank Precinct East (MPE) Stage 2 proposal, and information on the progress of other applications related to the project.

For more information on any of these matters, you can take a look at our regularly updated website at simta.com.au.

In addition to keeping the community informed and responding to your concerns, we are also engaging with other stakeholders. We've recently held meetings with officers of the Liverpool Council and are looking forward to working closely with them and understanding issues of local importance as the development progresses.

We are now finalising details in readiness to mobilise on site and are preparing to undertake the early works component of the MPW Concept Plan approval. Details of upcoming activities are available in the box opposite, and updated information will be available on our website.

We are also currently preparing a SSD Application for Stage 2 of the MPE Concept Plan Approval (SSD 6766). MPE Stage 2 (the Proposal) is located on the eastern side of Moorebank Avenue. This is the next step in the construction and operation of the Moorebank Intermodal Terminal Precinct. More information is available overleaf, including how to submit your feedback on the Proposal.

If you have any questions about anything in this newsletter, or the project more widely, you can contact us using the details provided on the back of this document. We look forward to working with the community to deliver this important project.

EARLY WORKS

Early works will focus on the preparation of the site for future stages of development and we are in the final stages of preparation for these works, with site mobilisation anticipated mid-September. We are also currently consulting with stakeholders on our construction environment management plan (CEMP) to support the early works activities and expect these plans to be finalised next month.

The early works will include:

- » Establishment of construction facilities and access, including site security
- » Demolition and removal of existing buildings, structures, services, hardstands/roads/pavements and associated infrastructure
- » Remediation of contaminated land and hotspots
- » Archaeological salvage of Aboriginal and European sites

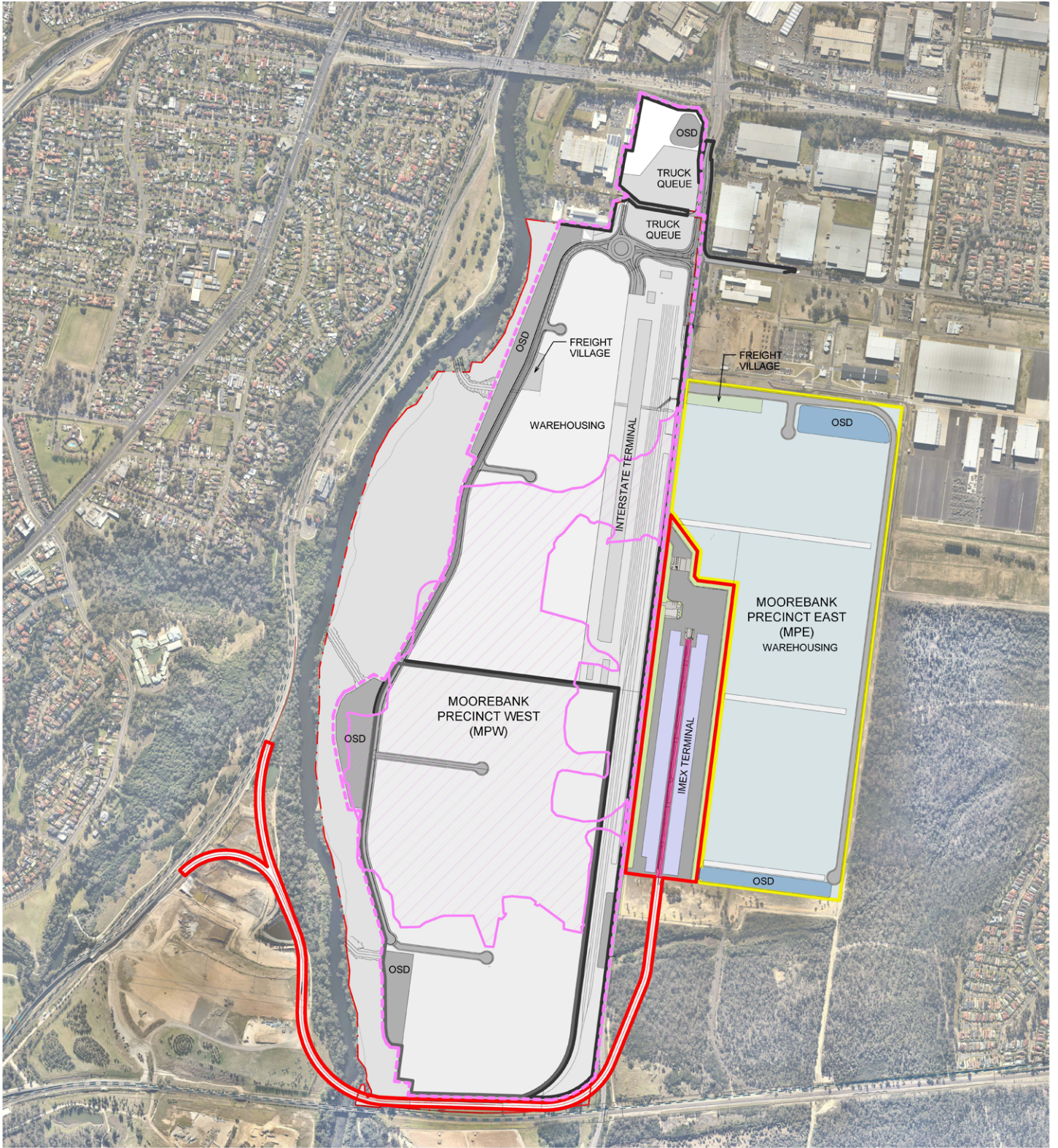


KEY BENEFITS





The Moorebank Intermodal Terminal will:

- » Help respond to the large increase in freight on the NSW transport network forecast for the coming years
- » Create around 7000 jobs
- » Inject millions of investment dollars into South-West Sydney
- » Reduce heavy truck movements on Sydney's roads by transferring freight from road to rail
- » Simplify freight logistics to deliver savings to businesses and consumers

Moorebank intermodal terminal precinct



MPW SITE
(SSD 5066)

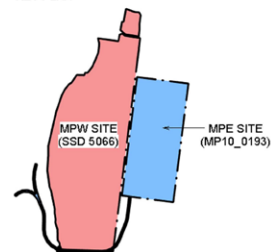
-  MPW STAGE 1 (DEMOLITION AND REMEDIATION) PRIMARY WORKS SSD 5066
-  MPW STAGE 1 (DEMOLITION AND REMEDIATION) SECONDARY WORKS SSD 5066
-  MPW STAGE 2 (TERMINAL, WAREHOUSING AND RAIL) SSD 7709
-  MPW STAGE 3 (WAREHOUSING) SSD TBC

MPE SITE
(MP10_0193)

-  MPE STAGE 1 SSD 6766
-  MPE STAGE 2 SSD 7628

OSD = ON-SITE DETENTION

KEY PLAN



MPE Stage 2 Consultation

SIMTA is preparing a State Significant Development Application for Stage 2 (SSD 7628) of the MPE Concept Plan Approval (SSD 6766). MPE Stage 2 is located on the eastern side of Moorebank Avenue. This is the next step in the construction and operation of the Moorebank Intermodal Terminal Precinct.

The Proposal involves:

- » Warehousing comprising approximately 300,000m² Gross Floor Area (GFA) with ancillary offices and car parking
- » Establishment of internal site roads, and connection of the Proposal to the surrounding road network via Moorebank Avenue
- » A freight village including food and retail space
- » Ancillary supporting infrastructure, including utility services, roadworks, signage, and onsite detention basins

As laid out in the planning process overleaf, we have lodged a Preliminary Environmental Assessment (PEA) with DP&E followed by the Secretary's Environmental Assessment Requirements (SEARs). We are currently preparing an Environmental Impact Statement (EIS), including detailed technical studies responding to the SEARs, expected to be lodged with DP&E in late October 2016.

The PEA covers the anticipated impacts, and mitigation measures, of the project across the following areas:

- » Traffic and transport
- » Noise and vibration
- » Air quality
- » Biodiversity
- » Stormwater and flooding
- » Soil and contamination
- » Aboriginal heritage
- » Non-Indigenous heritage
- » Visual amenity, urban design, and landscaping
- » Hazards and risk
- » Green House Gas emissions
- » Human Health
- » Other environmental issues

You can review the PEA on the DP&E website or on our own website, detail of which are below. We want to hear your comments on MPE Stage 2 SSD Application before submitting the EIS to the DP&E so your views can be considered in the planning process. The deadline for submissions is the 21st of September 2016.

To provide feedback on MPE Stage 2 SSD:

- » Find more information and submit feedback on simta.com.au
- » Email your submission to simta@elton.com.au
- » Request a meeting with the project team to discuss your feedback in person
- » Phone the free information line on 1800 986 465.

OVERVIEW OF PROJECT PROGRESS

APPLICATIONS BEING ASSESSED

- » MPE Stage 1 (awaiting final PAC determination)
 - 250,000 TEU Import Export Intermodal Terminal
 - Rail link connection to the SSFL
- » MPW Modification Application (DP&E reviewing following public exhibition)
 - Site clearing
 - Import, place, and stockpile of fill materials
- » MPW Stage 2 (undergoing final stakeholder consultation with lodgement imminent)
 - Site clearing and preparation
 - 500,000 TEU Interstate Intermodal Terminal
 - Rail link to the MPE Stage 1 rail
 - 215,000m² GFA warehousing
 - New site access from Moorebank Avenue

APPLICATIONS OPEN FOR CONSULTATION

- » MPE Stage 2 (SEARs issued by DP&E and EIS being finalised by SIMTA)

Planning process

Step 1	Lodgement of request for SEARs	Request for Secretary's Environmental Assessment Requirements (SEARs) lodged with the NSW Department of Planning and Environment (DP&E)	
Step 2	SEARs Issued	DP&E issues SEARs for the Proposal	
Step 3	Preparation of Environmental Impact Statement (EIS)	SIMTA prepares EIS including detailed environmental studies for the Proposal	WE ARE HERE MPE STAGE 2 MPW STAGE 2
Step 4	Lodge State Significant Development (SSD) EIS / Modification Report	SIMTA lodges the SSD EIS / Modification Report with DP&E	
Step 5	DP&E Review	DP&E makes a decision on whether the Proposal's EIS / Modification Report can be placed on public exhibition	
Step 6	Public exhibition	Public exhibition of the Proposal's EIS / Modification Report for public submission	
Step 7	Response to submissions	SIMTA responds to submissions received during public exhibition and lodges a Submissions Report with DP&E	WE ARE HERE MPW MOD
Step 8	Assessment by NSW DP&E	Assessment of the Proposal's EIS / Modification Report by DP&E	
Step 9	Determination of SSD / Modification	Determination is placed on the DP&E website and SIMTA, as well as all people who lodged written submissions, are notified of the determination	
Step 10	Preparation of a Modification Report of the approved SSD	SIMTA prepares a Modification Report to the approved SSD as required	



Contact Us

Please visit our website

 www.simta.com.au for more information.

For specific questions, please

 **call 1800 986 465**

 or send written enquiries or feedback to simta@elton.com.au

 PO Box 1488 Bondi Junction NSW 2022'