

COMMUNITY NEWS UPDATE

Liberty Industrial remediation award

We heartily congratulate one of our major contractors Liberty Industrial, which has won an Australian Land and Groundwater Association (ALGA) award in November for excellence in its work remediating the expansive Moorebank Logistics Park site.

The work undertaken by Liberty Industrial across the 240-hectare project site was nominated for the Best Remedial Project Over \$1m – the main award for the ALGA event.

The ALGA Annual Industry Excellence Awards Gala is the leading event of the year for Australian contaminated land industry professionals. The event recognises organisational and individual achievements related to contaminated land remediation.

A judging panel comprised of contaminated land remediation industry experts determined the 2018 Annual Industry Excellence Awards winners.

Qube and Liberty Industrial personnel were in attendance to receive the award.

Liberty Industrial's work involved the delivery of an extensive and complex demolition, remediation and civil works undertaking, incorporating three concurrent site preparation work packages associated with the construction of Australia's largest Intermodal Terminal.

Liberty Industrial's General Manager David Wood said: "It's wonderful to receive the recognition of the contaminated land remediation community for what we have achieved in the delivery of the Moorebank Intermodal Terminal project."

"I'd like to take the opportunity to recognise and celebrate the contributions of all involved. The whole Liberty Industrial team, from our front line project delivery guys, to our project management crews, headquarters and leadership personnel for all they have contributed to the success of the project."

The two-year project saw 253 buildings demolished, including extensive hazardous materials removal, and 3,205 tonnes of steel transported offsite for recycling. The remediation work has resulted in more than 100,000 cubic metres of material being excavated for assessment and treatment.

In addition, 102km of redundant services infrastructure was removed and backfilled under a stringent geotechnical specification.



\$15m invested locally by Moorebank project contractors

A review of project delivery expenditure by major SIMTA contractors in 2018 has revealed a significant proportion of subcontracted work being awarded to local suppliers in the south-west Sydney region.

CPB Contractors, which is building the project rail link, Georges River Bridge and Moorebank Avenue underpass, has awarded more than \$8 million of its \$43 million in subcontracted work to businesses from the Liverpool, Campbelltown, Fairfield and Bankstown local government areas.

Fulton Hogan, which is building the IMEX terminal and carrying out land preparation for warehousing on Moorebank Precinct East, has given about \$7 million of its \$39 million spend to local businesses.

That amounts to more than \$15 million injected into the local economy to support local jobs – equivalent to almost 20 cents of every dollar spent under those contracts. This is a significant proportion given much of the work involved in the delivery packages was highly specialised and there was not a local supplier available for our contractors to consider.



Bridge progress continues at pace

CPB contractors has continued progress at pace on the new Georges River rail bridge connecting our newly constructed rail links from the Southern Sydney Freight Line to both our IMEX terminal (under construction) and interstate rail terminal (to be built in the future on Moorebank Precinct West).

Piling for the final bridge pylons is being carried out in the lead-up to Christmas and these pylons and the western bridge girders and deck will be poured early in 2019.

The eastern side of the bridge is more advanced, with girders lifted in during October and the bridge deck poured during early December.

Related work continues to take place along the eastern side of the Glenfield Waste Services site, visible from the Sydney Trains rail bridge between Holsworthy and Glenfield and from Leacocks Regional Park in Casula.



BMD begins work on Moorebank Avenue

BMD Constructions has started work on the Moorebank Avenue Upgrade, with the project currently in the detailed design finalisation and construction pre-planning phase in consultation with Roads and Maritime Services.

As an experienced contractor, highly regarded for the delivery of complex infrastructure projects across New South Wales for 18 years, BMD will deliver civil works to raise the road by two metres along the full length of the project site and also widen Moorebank Avenue from two to four lanes between Anzac Avenue and the main entrance to the IMEX terminal.

BMD's work as part of the Moorebank Avenue Upgrade include traffic and capacity improvements, road alignment adjustments to align with and facilitate adjacent development levels, access arrangements, drainage works and services relocation.

Construction of the road works is expected to commence early in 2019.

Motorists on Moorebank Avenue are encouraged to expect changed conditions, look for digital messaging boards, obey temporary traffic signals and follow the instruction of traffic controllers at all times.

LCC visit Moorebank Logistics Park for update

Last week we welcomed the Mayor of Liverpool as well as fellow Councillors and senior executives for a tour of the project site and a discussion about construction progress and opportunities for the local community during operation of Moorebank Logistics Park.

In attendance were Mayor Wendy Waller, CEO Kiersten Fishburn, Cllr Geoff Sheldon, Cllr Karress Rhodes, Tim Moore (Dir City Economy & Growth), Dr Eddie Jackson (Dir City Deals), Raj Autar (Dir City Infrastructure & Environment) David Smith (Manager Strategic Planning).

The group was given a tour of both the MPE and MPW sites to inspect the progress of construction and then were hosted in the MLP's Sales suite for a briefing and Q&A session.

It was a great opportunity for project representatives to discuss project issues, hear the council's priorities and detail the construction initiatives that saw our already-low noise and dust complaint numbers halved in 2018.

We look forward to continued engagement and collaboration with Liverpool City Council as construction continues and first operations commence in 2019.



Import Export terminal finishing begins

Import Export terminal (IMEX) contractor Fulton Hogan is in the process of installing about 10,000 tonnes of heavy-duty asphalt on the first stage of terminal footprint as the finishing touches of the facility begin to be applied.

The terminal requires a special pavement to meet the high design levels nominated. To meet the challenge, Fulton Hogan paving specialists are utilising their customised solution called PortPhalt.

PortPhalt offers superior performance and is produced at Fulton Hogan's Western Sydney facility, at Eastern Creek.

Fulton Hogan also recently installed the IMEX Switch Room, which will power the IMEX terminal and surrounding warehousing, and emergency water storage for firefighting in two green water towers that Moorebank Avenue motorists will see as they pass the entry to Moorebank Precinct east, just south of Piccolo Me.



Christmas work shutdown dates

Our contractors will generally shut down from close of business on Friday 21 December and not return until Wednesday 2 January, but some minor activities may occur during that Christmas and New Year period.

Any work on-site during that time would be limited to standard construction hours on weekdays and Saturdays that are not public holidays. No work will be carried out on Sundays or public holidays.

If you have questions at any time about construction on our project, email simta@elton.com.au or phone 1800 986 465.



Preparations underway for Target's arrival on-site

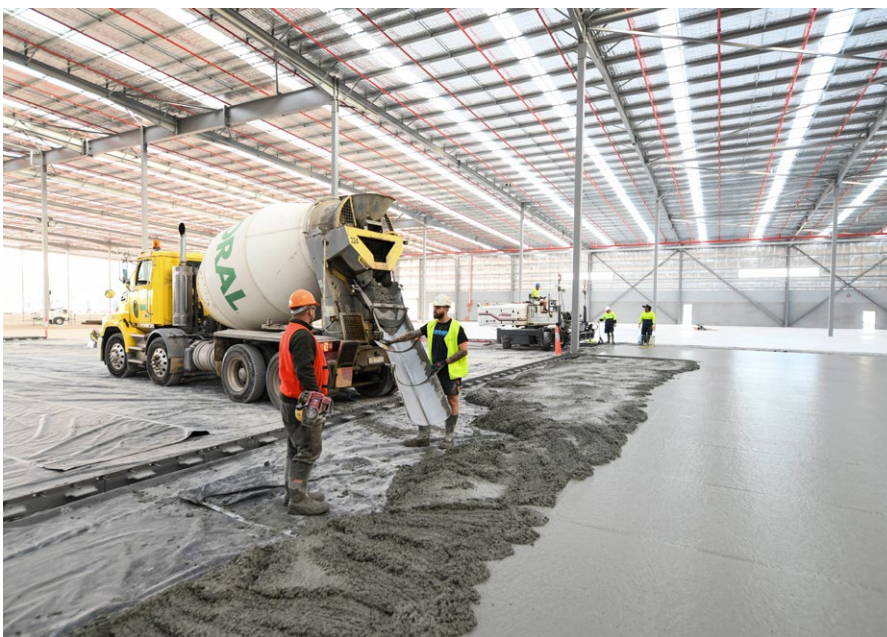
Those who regularly pass our site will have seen a massive warehouse taking shape in recent months which will be home to Target – the first major tenant to commit to a long-term residency at the Moorebank Logistics Park.

The facility measures almost 40,000 square metres of both warehouse storage and office space.

Automated gantry cranes and straddle carriers will deliver goods in containers direct from the IMEX terminal to the southern end of the building, while trucks taking goods to Target stores and online customers will be loaded and depart from the northern end of the highly-efficient and largely-automated building.

The shed, while huge, accounts for just five per cent of the warehousing proposed for our facility across both Moorebank Precinct East and Moorebank Precinct West.

Target will begin fit-out of the facility in early 2019 and commence operations on-site later in the year.



NSW Ports rail upgrade to benefit Moorebank Logistics Park

Qube Holdings, the developer of Moorebank Logistics Park, welcomes an announcement by NSW Ports in November that it would invest \$120 million in 'on-dock' rail infrastructure capacity at Port Botany.

NSW Ports' investment in rail infrastructure will be accompanied by Patrick's \$70 million investment in operating equipment and systems to deliver 1 million TEU capacity.

The agreement with NSW Ports will significantly increase rail capacity and enhance productivity and efficiency in container movements at the port.

Work will begin next year and is planned for completion by 2023.

It's a further boost for our project following the Federal Government's announcement in May of significant upgrades to and expansion of freight rail lines between Port Botany and Liverpool.



Contact Us

Please visit our website



www.simta.com.au
for more information



PO Box 1488 Bondi Junction
NSW 2022

For specific questions, please



call 1800 986 465

or send written enquiries or feedback to
simta@elton.com.au