

## COMMUNITY NEWS UPDATE

We are writing to update you about the next steps in the development of the Moorebank Intermodal Terminal Precinct.

As you may know, in June 2015 the Commonwealth Government approved an agreement where SIMTA will develop and operate the intermodal terminal precinct at Moorebank. The Planning Assessment Commission (PAC) has now approved both the SIMTA and Moorebank Intermodal Company (MIC) Concept Plan Applications for the Precinct.

These approvals mean that early works will soon begin. The works include the demolition of buildings, removal of underground storage tanks, remediation of contaminated lands, assessment and protection of heritage items, and the establishment of construction facilities and site security.

This work will be undertaken in line with the recent MPW Concept Plan Early Works approval within the former Defence land, and will start in early-mid August 2016.

Alongside these works, there are also subsequent planning applications underway where we are seeking your feedback. These cover both the SIMTA site, now known as Moorebank Precinct East, or MPE, and the MIC site, now known as Moorebank Precinct West, or MPW.

To give you an overview of how the project is progressing, a table showing the current status of applications is opposite. Details about how you can get further information or lodge submissions are also provided on page 3.

As the project continues, we will keep communicating clearly and accurately with the local community so any concerns you raise are heard and considered as part of the development. There are also strict conditions of consent and independent monitoring processes imposed by the Department of Planning & Environment (DP&E) to ensure the issues already raised by the community are mitigated and properly managed.

The relaunched SIMTA website ([www.simta.com.au](http://www.simta.com.au)) will remain an important source of information and point of contact for you throughout this project. It will be updated regularly to keep you informed. We look forward to working with the community to deliver this important project.

## OVERVIEW OF PROJECT PROGRESS

### DETERMINED APPLICATIONS

- » SIMTA (now MPE) Concept Plan (approved by PAC 29 September 2014)
- » MIC (now MPW) Concept Plan (approved by PAC on 3 June 2016)

### APPLICATIONS BEING ASSESSED

- » SIMTA (now MPE) Stage 1 (awaiting final PAC determination)

### APPLICATIONS OPEN FOR CONSULTATION

- » MPW Modification Application (submitted by SIMTA to DP&E and on exhibition from 7 July – 22 August 2016)
- » MPW Stage 2 (SEARs issued by DP&E and EIS being developed by SIMTA)

### APPLICATIONS WITH UPCOMING CONSULTATION

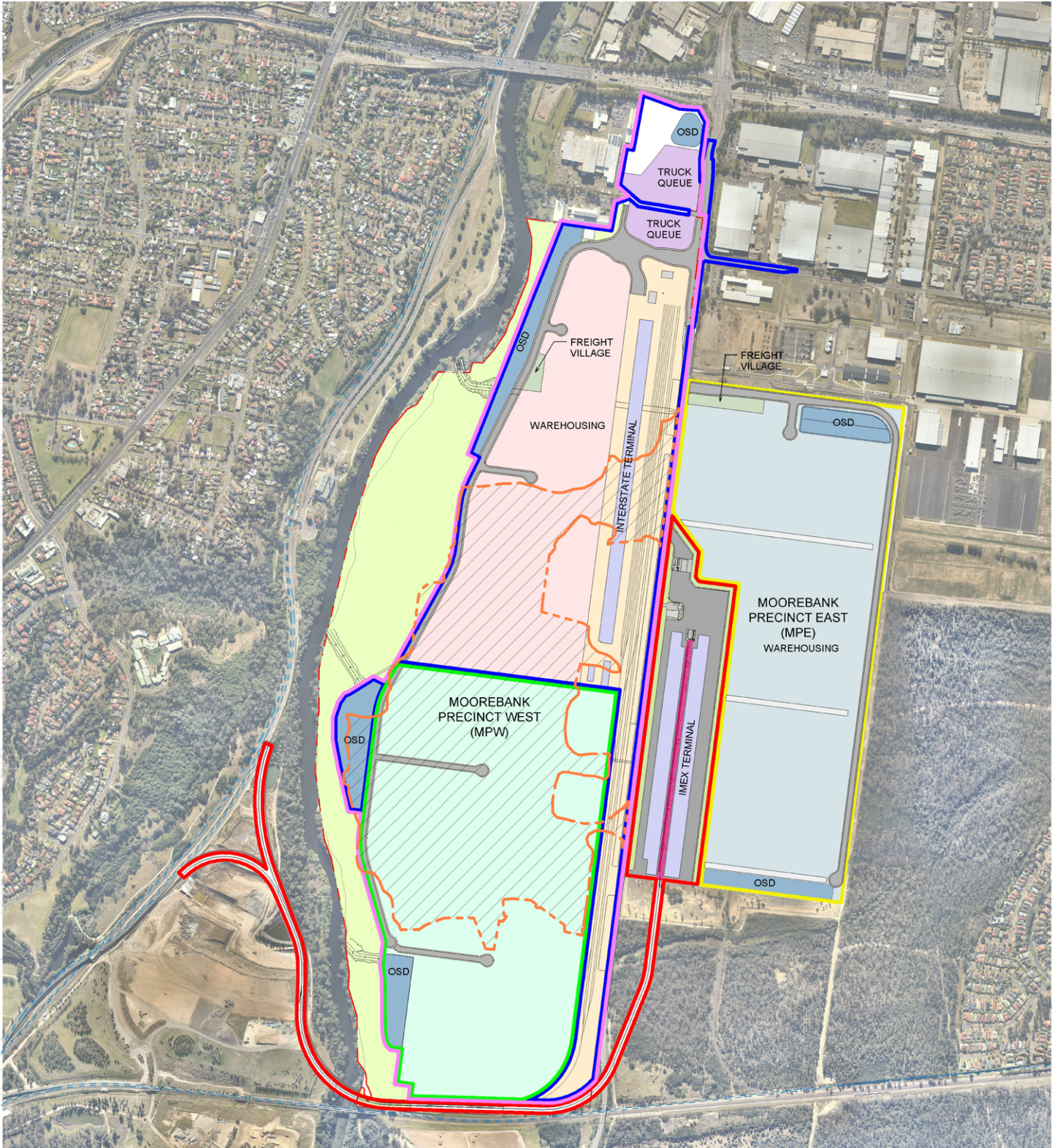
- » MPE Stage 2 (SEARs issued by DP&E and EIS being developed by SIMTA)

## KEY BENEFITS





The Moorebank Intermodal Terminal will:

- » Help respond to the large increase in freight on the NSW transport network forecast for the coming years
- » Create more than 7000 jobs
- » Inject millions of investment dollars into South-West Sydney
- » Reduce heavy truck movements on Sydney's roads by transferring freight from road to rail
- » Simplify freight logistics to deliver savings to businesses and consumers

# Moorebank intermodal terminal precinct



MPW SITE  
(SSD 5066)

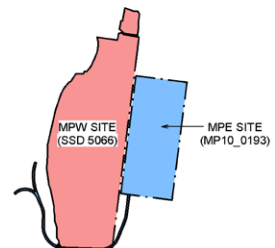
-  MPW EARLY WORKS MODIFICATION AREA MOD16\_T722 (SSD 5066)
-  MPW STAGE 1 (CLEARING AND EARTHWORKS) SSD 5066
-  MPW STAGE 2 (TERMINAL, WAREHOUSING AND RAIL) SSD 7709
-  MPW STAGE 3 (WAREHOUSING) SSD TBC

MPE SITE  
(MP10\_0193)

-  MPE STAGE 1 SSD 6766
-  MPE STAGE 2 SSD 7628

OSD = ON-SITE DETENTION

KEY PLAN



## Determined applications

### MPE Concept Plan

On 29 September 2014, the NSW Planning Assessment Commission (PAC) approved SIMTA's Concept Plan for an intermodal terminal facility including rail link to the Southern Sydney Freight Line (SSFL), warehousing and distribution facilities, and supporting infrastructure.

### MPW Concept Plan

On 3 June 2016, the NSW PAC approved MIC's State Significant Development Application which included a concept proposal for an intermodal freight terminal, rail link to the South Sydney Freight Line, warehouse and distribution facilities, associated infrastructure and approval to carry out certain early works on the site.

## Applications being assessed

### MPE Stage 1

We have now completed consultation on the Stage 1 application for Moorebank Precinct East which includes the IMEX terminal and rail link. We have submitted our application, which includes a Submissions Report detailing the feedback we received, to DP&E. The Department has recommended approval subject to conditions, and we are awaiting the final determination from PAC. Further details will be placed on the SIMTA website when they become available.

## Applications open for consultation

### MPW Early Works Modification Application

SIMTA recently submitted a Modification Application seeking to amend the MPW SSD Concept Plan Approval to allow the Early Works to include the import of clean fill material to be brought to the site. This fill is required to prepare the site for construction. The Application also seeks approval to crush and screen oversized material on site.

The imported clean fill comprises excavated sandstone from other Sydney infrastructure projects which are under construction. A large proportion of the fill is already being transported in trucks travelling through the Liverpool area on their way to sites further west. The Application seeks to reduce the impact of importing the required fill by having it brought directly to Moorebank in that one journey rather than the fill continuing on further west and be stockpiled with a possible second trip required to bring the material back to the Moorebank site.

SIMTA is also seeking a temporary extension to the hours within which the fill can be delivered to the Moorebank site to align with the timing of this material leaving from other infrastructure

projects. The extended operating hours (6am – 10pm weekdays and 7am – 6pm on Saturdays) would allow the truck movements to be spread out across the day, making better use of non-peak travel times and minimising any traffic impacts during peak hours.

The Application has been placed on exhibition by the DP&E for public comment. To view the proposal and make a submission, visit [www.planning.nsw.gov.au](http://www.planning.nsw.gov.au) (ref: Application SSDMod 16\_7722 (SSD5066)) by 22 August 2016.

### MPW Stage 2 Consultation

SIMTA is preparing a SSD Application for Stage 2 of the MPW Concept Plan Approval (SSD 5066). MPW Stage 2 (the Proposal) is located on the western side of Moorebank Avenue. This is the next step in the construction and operation of the Moorebank Intermodal Terminal Precinct.

The Proposal involves the construction and operation of an intermodal terminal facility with capacity of 500,000 TEU per annum, up to 215,000sqm of warehousing and associated infrastructure including an extension to the rail link proposed for construction as part of MPE Stage 1 and upgrading part of Moorebank Ave to allow an entry and exit point for the development.

As laid out in the planning process overleaf, we have lodged a Preliminary Environmental Assessment (PEA) with DP&E, recently receiving Secretary's Environmental Assessment Requirements (SEARs). We are currently preparing an Environmental Impact Statement (EIS), including detailed technical studies responding to the SEARS, expected to be lodged with DP&E in October 2016.

The PEA covers the impacts, and mitigation measures, of the project across the following areas:

- » Traffic and transport
- » Noise and vibration
- » Air quality
- » Biodiversity
- » Stormwater and flooding
- » Soil and contamination
- » Aboriginal heritage
- » Non-Indigenous heritage
- » Visual amenity, urban design, and landscaping
- » Hazards and risk
- » Green House Gas emissions
- » Human Health
- » Other environmental issues

You can review the PEA document on the DP&E website, or via our own website, details of which are below. We want to hear your comments on MPW Stage 2 SSD Application before submitting the EIS to the DP&E so your views can be considered in the planning process. The deadline for submissions is 21st August 2016.

#### To provide feedback:

- » Find more information and submit feedback on [simta.com.au](http://simta.com.au)
- » Email your submission to [simta@elton.com.au](mailto:simta@elton.com.au)
- » Request a meeting with the project team to discuss your feedback in person
- » Phone the free information line on **1800 986 465**.

# Applications with upcoming consultation

## MPE Stage 2

SIMTA is preparing a SSD Application for Stage 2 of the MPE Concept Plan Approval. MPE Stage 2 is located on the eastern side of Moorebank Avenue. This is the next step in the construction and operation of the Moorebank Intermodal Terminal Precinct.

We have lodged a Preliminary Environmental Assessment (PEA) with DP&E and Secretary's Environmental Assessment Requirements (SEARs) have been received. We will provide more details of this application in the next newsletter, including how the community can provide feedback.

## Planning process

Step 1	<b>Lodgement of request for SEARs</b>	Request for Secretary's Environmental Assessment Requirements (SEARs) lodged with the NSW Department of Planning and Environment (DP&E)
Step 2	<b>SEARs Issued</b>	DP&E issues SEARs for the Proposal <b>WE ARE HERE</b> MPW STAGE 2
Step 3	<b>Preparation of Environmental Impact Statement (EIS)</b>	SIMTA prepares EIS including detailed environmental studies for the Proposal
Step 4	<b>Lodge State Significant Development (SSD) EIS / Modification Report</b>	SIMTA lodges the SSD EIS / Modification Report with DP&E
Step 5	<b>DP&amp;E Review</b>	DP&E makes a decision on whether the Proposal's EIS / Modification Report can be placed on public exhibition
Step 6	<b>Public exhibition</b>	Public exhibition of the Proposal's EIS / Modification Report for public submission <b>WE ARE HERE</b> MPW EARLY WORKS MODIFICATION
Step 7	<b>Response to submissions</b>	SIMTA responds to submissions received during public exhibition and lodges a Submissions Report with DP&E
Step 8	<b>Assessment by NSW DP&amp;E</b>	Assessment of the Proposal's EIS / Modification Report by DP&E
Step 9	<b>Determination of SSD / Modification</b>	Determination is placed on the DP&E website and SIMTA, as well as all people who lodged written submissions, are notified of the determination
Step 10	<b>Preparation of a Modification Report of the approved SSD</b>	SIMTA prepares a Modification Report to the approved SSD as required



## Contact Us

Please visit our website

 [www.simta.com.au](http://www.simta.com.au) for more information.

For specific questions, please

 call 1800 986 465

 or send written enquiries or feedback to [simta@elton.com.au](mailto:simta@elton.com.au)

 PO Box 1488 Bondi Junction NSW 2022'