

MOOREBANK LOGISTICS PARK

Moorebank Logistics Park (MLP) is Australia's most significant industrial and intermodal precinct. The scale and capacity of the precinct is an Australian first and will transform the country's supply chain, taking tens of thousands of trucks off the road as well as lowering costs for business and consumers by providing more efficient and sustainable processing and delivery of goods.

DECEMBER 2022 UPDATE

Warehouse and Infrastructure Development

Construction is progressing on two warehouses in the south-eastern corner of Moorebank Precinct East (MPE). These warehouses are expected to be completed by mid 2023. As reported in our September update, part of this warehouse development will be leased and developed by Mainfreight, a global logistics provider.

Following the completion of these warehouses, the next phase of warehouse development will focus on Moorebank Precinct West (MPW). Procurement processes for the construction of warehouses in the north of this precinct have commenced. Further updates will be provided in early 2023.

The noise wall along the Western Ring Road in MPW is beginning to take shape and should be completed by the end of 2022.

Road improvements

To support the better flow of traffic and freight movements around the MLP precinct, several significant improvements to road infrastructure are being planned or underway.

Works on the upgrade of the intersection of Moorebank Avenue and Anzac Road are progressing well, with stormwater installation, utility service relocation and earthworks underway. This upgrade will improve access into and around MLP by providing a signalised intersection and increasing the number of through traffic lanes on Moorebank Avenue.

The new road into MPW being constructed as part of the Anzac Road intersection works has been officially named Bushmaster Avenue by Liverpool Council.

Upgrades to Bapaume Road are progressing well and once complete will provide the primary construction access to

MPW. Chatham Avenue will be closed at this time, which is expected to be around March 2023. It is expected that Bushmaster Avenue, which will provide a signalised access into MPW, will be open around the middle of 2023.

Moorebank Avenue realignment is progressing through the design phases. National Intermodal Corporation (National Intermodal) have appointed GHD as Project Managers and are currently finalising the engineering designs.

M5 Westbound Upgrade (M5WBU)

Transport for NSW is progressing with plans to improve the M5 Motorway for motorists travelling westbound. The M5WBU Project Team continues to review the Review of Environmental (REF) submissions received in September 2022 and is commencing to develop the submissions report. Concurrently, the Project Team is working on the 100% Concept Design. A Submissions Report will be finalised in early 2023. Anyone who made a submission and registered for project alerts will be notified when it is published.

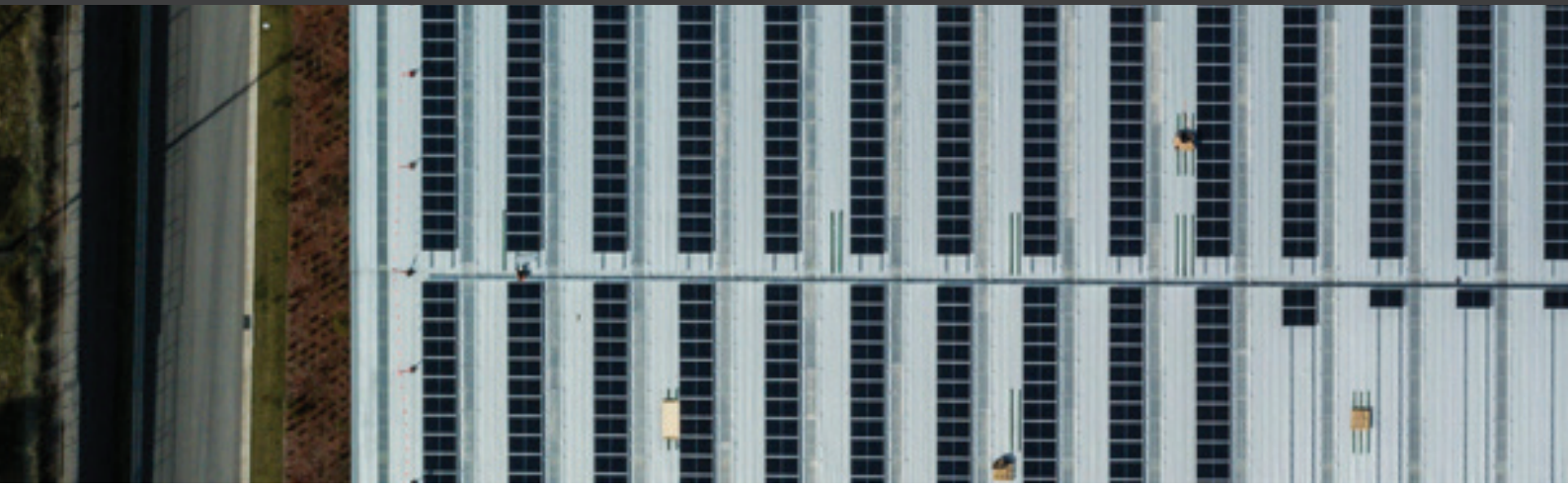
Project updates can be found at nswroads.work/m5motorwaywestbound

Interstate Intermodal Rail Terminal

Earthworks, stormwater and utility installation works are progressing with completion expected early in the new year to allow commencement of pavement and rail infrastructure works.

In preparation for rail infrastructure construction, site areas have been established for rail fabrication including welding and turnout construction.

A milestone achieved during November was the delivery to site by railset of 14.5km of railtrack during the shutdown of the Southern Sydney Freight Line minimising any potential interruption to IMEX operations.



SUSTAINABILITY AND COMMUNITY



Renewable energy

LOGOS was pleased to have recently announced its partnership with Solar Bay to develop Australia's largest solar panel and micro-grid installation at MLP, allowing its operations to achieve net zero emissions.

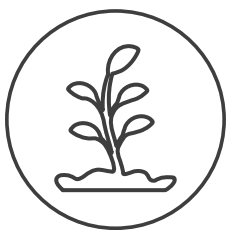
Over the coming years, 60MW of rooftop solar will be installed across the estate along with 150MW of battery energy storage to supply the embedded network with renewable energy. The combined power of this rooftop solar and battery energy will generate enough clean energy to power the equivalent of 40,000 homes in NSW, avoiding an estimated 67.2 kilotonnes of CO2 emissions each year.



Local jobs for local people

The Precinct Partners are committed to working with our stakeholders to develop a skilled workforce for now and into the future. We are now consulting with our stakeholders on a range of options, including:

- Funding to help local people understand the range of potential employment opportunities available in a modern logistics chain
- Exploring options for partnerships with local organisations to provide relevant training and certification opportunities
- Working with contractors and tenants to ensure they employ local people and apprentices.



Biodiversity

The biodiversity values at MLP are being protected and enhanced through the protection of 105 hectares of biodiversity offset areas surrounding the precinct.

This biobanking area, which is more than three times the size of the Royal Botanic Gardens, will provide ongoing habitat to a range of plant and animal species in the area. Environmental work is being carried out by Eco Logical Australia on behalf of National Intermodal and to date they have completed exotic vegetation removal and weeding across several priority zones in the Precinct.



Inclusive Community Playgrounds

National Intermodal is pleased to announce that it will be partnering with Play for All Australia, a for-purpose social enterprise,

and Liverpool City Council to sponsor two inclusive swings as part of the Play It Forward program. Play for All Australia has identified the absence of inclusive swing seats for young children in a number of local playgrounds and are working with local businesses to ensure that children of all abilities have access to the social, cognitive and emotional benefits that come from play. This includes children living with a disability. National Intermodal looks forward to supporting the upgrade of the swing seats in the Moorebank area when the initiative launches in 2023.



Solar panels being installed on the roof of a MPE warehouse

3 MONTH LOOK AHEAD OF KEY CONSTRUCTION ACTIVITIES

The MLP site will generally be closed for construction activities over the holiday period between 22nd December 2022 and 3 January 2023. There may be exceptions to this to allow the import of materials and utility works.

Activity (subject to change)	December	January	February
Relocation of utility services in Moorebank Avenue, Anzac Road and Bapaume Road*	●	●	●
Helicopter lifts**	●		●
Earthworks to support warehouse construction/development in MPW	●	●	●
Ongoing development of existing warehouses on MPE and MPW	●	●	●
Earthworks, stormwater and utility installation for the Interstate Intermodal Rail Terminal	●	●	●

*Outside standard construction hours

**In response to community feedback, LOGOS intends to conduct helicopter activities within standard construction hours. Where there is an unacceptable risk to worker safety, activities may need to occur out of hours. In this event, impacted residents will be notified via letterbox drop and the SIMTA website.



Thank you to the members of the Community Consultative Committee for their time and input into the development of MLP throughout 2022.



Moorebank Precinct West (MPW) under construction

OPERATING AND CONSTRUCTION HOURS



The approved operating hours of the Intermodal Facility (including the Import Export Terminal and Warehousing) are 24 hours, 7 days a week.

The approved construction work hours* are:

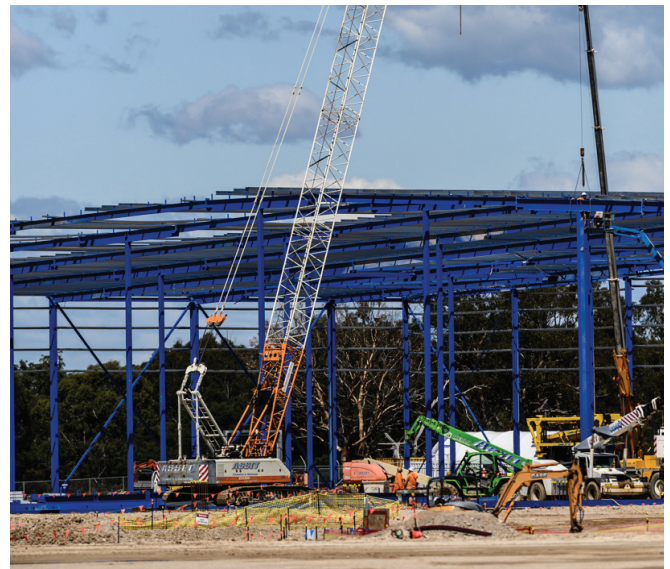
Moorebank Precinct West

- Monday to Friday: 7am – 6pm
- Saturday: 8am – 1pm

Moorebank Precinct East

- Monday to Friday: 7am – 6pm
- Saturday: 7am – 1pm

* Any planned works outside of these hours will be communicated in advance through the SIMTA website or letterbox drop.



MINIMISING IMPACTS TO THE COMMUNITY



We are committed to always working within the conditions of consent for the site and aim to minimise impacts, such as noise, vibration and dust, that may arise from MLP's operation and construction activities. We are doing this by using a range of measures that include:

- Designing the MLP precinct so that the IMEX and Interstate Rail Terminals are located at the centre of the site, and once fully developed, will be surrounded by warehousing that will also act as a noise barrier. Other noise barrier structures such as container stacks and noise walls are used in certain parts of the precinct.
- Quieter equipment, such as electric and automated cranes and broadband reversing alarms (quackers) for quieter operations.
- Wheel washing to reduce the risk of dirt tracking onto public roads.
- Dust suppression through compaction and/or stabilisation of exposed areas; and the use of water carts to water down active construction areas to reduce the risk of dust particles becoming airborne and migrating off site.
- Monitoring to confirm that the project is operating within noise, vibration and water quality requirements.

GETTING IN TOUCH

For further information, please visit our website: www.simta.com.au

To make contact, request information or make a complaint:



Write to:
Level 15, 207 Kent Street,
Sydney, NSW, 2000



Call:
1800 986 465



Email:
moorebank@tsamgt.com