

## COMMUNITY NEWS UPDATE

## Moorebank Logistics Park industry launch

Qube Holdings officially launched the Moorebank Logistics Park (MLP) at an on site industry function held in May. The event was well-attended by representatives of the property, logistics and retail industries as well as prospective tenants and local business and community leaders.

The MLP launch followed the sod-turning ceremony (see photo) marking the commencement of construction which was held in early April by Minister for Finance, Senator the Hon. Mathias Cormann and Minister for Infrastructure & Transport, the Hon. Darren Chester MP.

Speaking at the launch of Moorebank Logistics Park, Maurice James, Managing Director of Qube said the Moorebank precinct would transform the freight and logistics supply chain along the East Coast.

“The Moorebank development is certainly a once in a lifetime opportunity,” Mr James said. “Linking one of the nation’s busiest ports by rail to an inland facility with the location benefits of the Moorebank site is a game changer that will deliver huge long-term benefits to consumers, businesses and the people of southwest Sydney and NSW more broadly.”

The development received planning approvals from both the NSW and Federal governments between 2014 and 2016 and works began in August 2016 to prepare the site for construction.

Development approval for Stage 1 (the IMEX terminal, rail link and administration building) was received in December 2016.

Qube will develop, manage and operate Moorebank Logistics Park on the 243-hectare site under a 99-year lease. The precinct will include up to 850,000sqm of integrated warehousing when fully developed and transport 1 million TEU of freight between Port Botany and Moorebank by rail instead of road – removing thousands of heavy truck movements off Sydney’s road network every day.

The MLP will provide up to \$11 billion in economic benefits and generate an estimated 6,800 jobs in the south-west of Sydney. Mr James confirmed negotiations are close to completion with the first tenant for the site.



Moorebank Logistics Park Sod Turning

## Kickstart for thousands of new local jobs

Moorebank Intermodal Company (MIC) and Qube Holdings have kickstarted the delivery of thousands of new jobs for southwest Sydney with the first meetings of the Moorebank Intermodal Terminal Workforce Advisory Group.

The main focus of the advisory group will be identifying and addressing skill shortages and education and training needs that will enable the local people to capitalise on the significant job opportunities generated by the development and operation of Moorebank Logistics Park.

“MIC has been working closely with Australian Industry Standards to ensure appropriate training is available locally to assist southwest Sydney residents to be job-ready,” said MIC CEO, Ian Hunt.

“Moorebank Logistics Park will create a range of exciting job opportunities that will require a number of different skill sets and qualifications. The establishment of this Advisory Group is about ensuring the local community have access to the education and training they need to fulfil these roles.”

Membership of the group includes representatives from state government, local councils, chambers of commerce, industry and tertiary educational institutions.

## Construction update to June

Since our last newsletter we have been busy finalising our plans to mobilise to site and we have received approval of several key documents including:

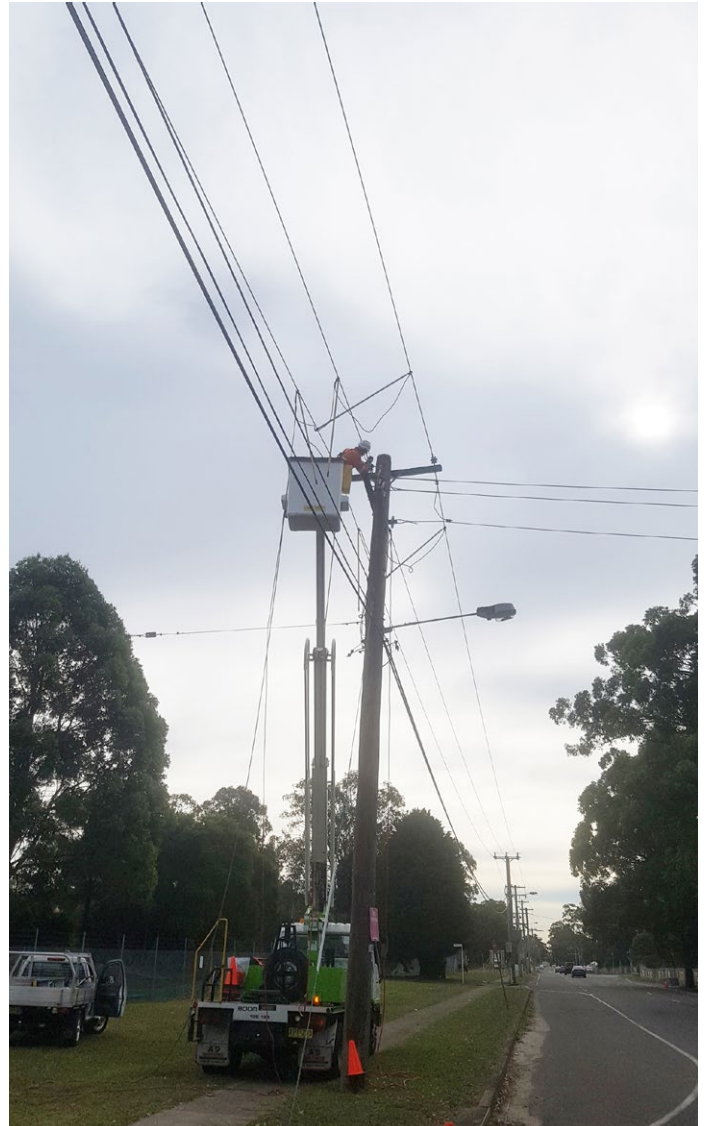
- » IMEX Terminal Construction Environmental management plans and sub-plans
  - NSW Department of Planning and Environment Approval – 4 May 2017
  - Commonwealth Department of Energy and Environment Approval – 24 May 2017
- » Rail Access Construction Environmental Management plans and sub-plans
  - NSW Department of Planning and Environment Approval – 11 May 2017
  - Commonwealth Department of Energy and Environment Approval – 24 May 2017

This has seen the first of our construction contractors mobilise to site for the MPE Project and in mid-June the construction works commenced on the Import Export (IMEX) terminal as well as pre-construction work related to rail access works construction sites.

Liberty Industrial will again be completing the demolition, remediation and heritage salvage work across the IMEX terminal site in readiness for construction of the IMEX terminal, and CPB Contractors has been awarded the rail access work package.

Liberty Industrial are also undertaking the building demolition and remediation work on the Moorebank Precinct West (MPW) site. This work has been underway for some time and is scheduled for completion during the third quarter of 2017, with some Aboriginal heritage salvage work continuing into the fourth quarter.

The construction work either underway or soon to start include the site establishment, relocation and protection of underground services, demolition, remediation, and minor associated controlled vegetation clearing.



### Work updates:

All updates on current works can be found on the SIMTA homepage – [www.simta.com.au](http://www.simta.com.au).

## Upcoming work

Other construction works as part of MPE Stage 1 is in the final stages of preparation and we will be progressing these works in the coming months. The upcoming work will include the next stages in the construction of the IMEX terminal and further pre-construction work on the rail access link from the MPE site passing through the south of the MPW site, crossing Moorebank Avenue, the Georges River and Glenfield Waste Facility and connecting to the Southern Sydney Freight Line.

The construction activities include excavation and earthworks, foundations and pavements, roadworks, bridgeworks, utility connections, landscaping and fencing.

Work will take place between 7am and 6pm Monday to Friday and from 8am to 1pm Saturday, and is expected to continue until late 2018.

Further detail on these activities can be found in the MPE Stage 1 EIS and RtS on the SIMTA website – [www.simta.com.au](http://www.simta.com.au).

At times you may notice minor construction-related noise and vibration and additional construction traffic on Moorebank Avenue and the associated arterial roads. Measures such as traffic control plans will need to be implemented to minimise disturbance associated with these activities. Construction traffic will not be accessing any local suburban roads.



## Planning updates

### MPW Stage 2 EIS and MPW Modification Application 1

The Response to Submissions (RtS) Report and Supplementary Response to Submissions Report for the above applications will shortly be lodged with the Department of Planning and Environment (DPE) for its assessment. To view the details of the proposal and modification, including the Environmental Impact Statement (EIS) and the Response to Submissions (once lodged with DP&E), visit [www.planning.nsw.gov.au](http://www.planning.nsw.gov.au) or [www.simta.com.au](http://www.simta.com.au).

### MPE Stage 2 EIS and MPE Concept Plan Modification

We are finalising the RtS reports for these applications and expect to submit these documents to DPE during July 2017. To view the details of this proposal and modification, including the EIS, Modification Report and the Response to Submissions (once lodged with DP&E), visit [www.planning.nsw.gov.au](http://www.planning.nsw.gov.au) or [www.simta.com.au](http://www.simta.com.au).

## EDO court case update






The appeal commenced in February by the Environmental Defender's Office has been adjourned until August. The EDO is acting on behalf of a local residents' action group seeking to overturn the approval to construct the first stage of the Moorebank Logistics Park.

The Land & Environment Court ordered the parties to attend a conciliation conference at that time to try to resolve the case. The merits of the residents' claims have not been tested by the court at this stage.

Residents are seeking to overturn the Planning Assessment Commission's (PAC) approval issued in December 2016 for the construction of the import/export intermodal terminal and the rail line linking the site to the Southern Sydney Freight Line.

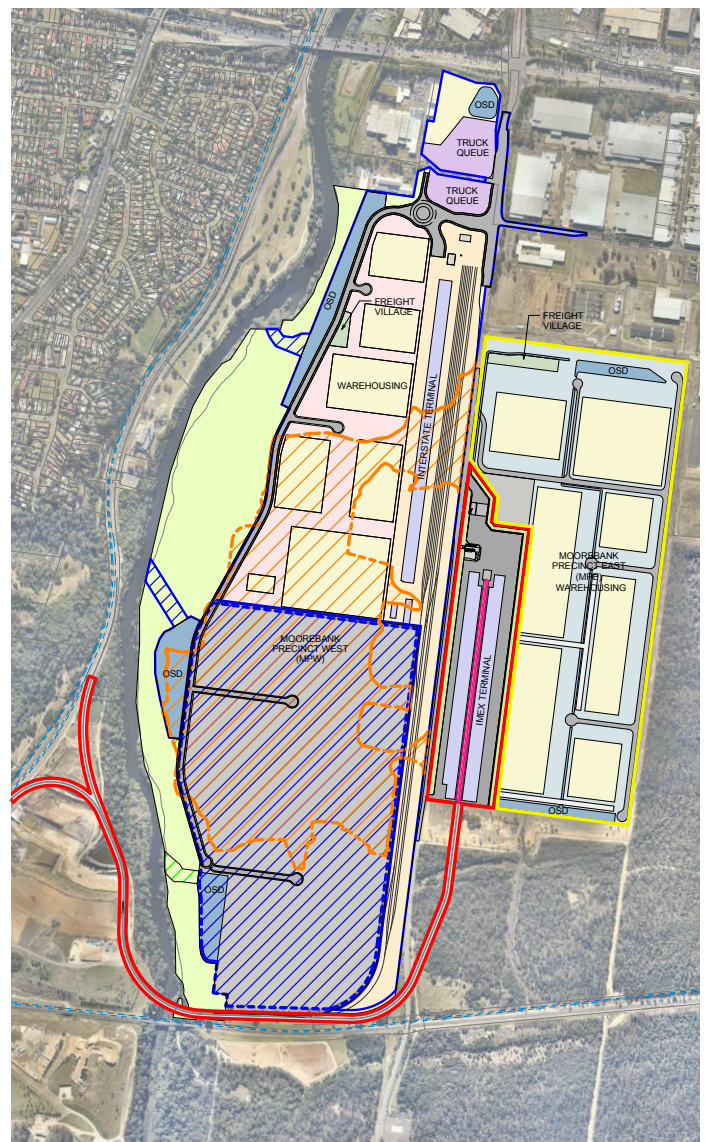
The appeal does not challenge the two earlier Concept Plan approvals granted by the PAC which approve the site's use as an intermodal terminal linked by rail to Port Botany.

If conciliation talks fail to resolve the matter, the court will determine a timetable for the case to proceed to hearing.

MPW SITE (SSD 5066)	MPE SITE (MP10_0193)
 APPROVED MPW EARLY WORKS (SSD 5066)	 APPROVED MPE STAGE 1 (SSD 6766) (IMEX TERMINAL & RAIL LINK)
 PROPOSED MPW STAGE 2 (SSD 7709) TERMINAL, RAIL AND WAREHOUSING	 PROPOSED MPE STAGE 2 (SSD 7628) (WAREHOUSING)
 PROPOSED MPW STAGE 2 (SSD 7709) BULK EARTHWORKS & SITE CLEARING AREA ONLY	

## Local benefits

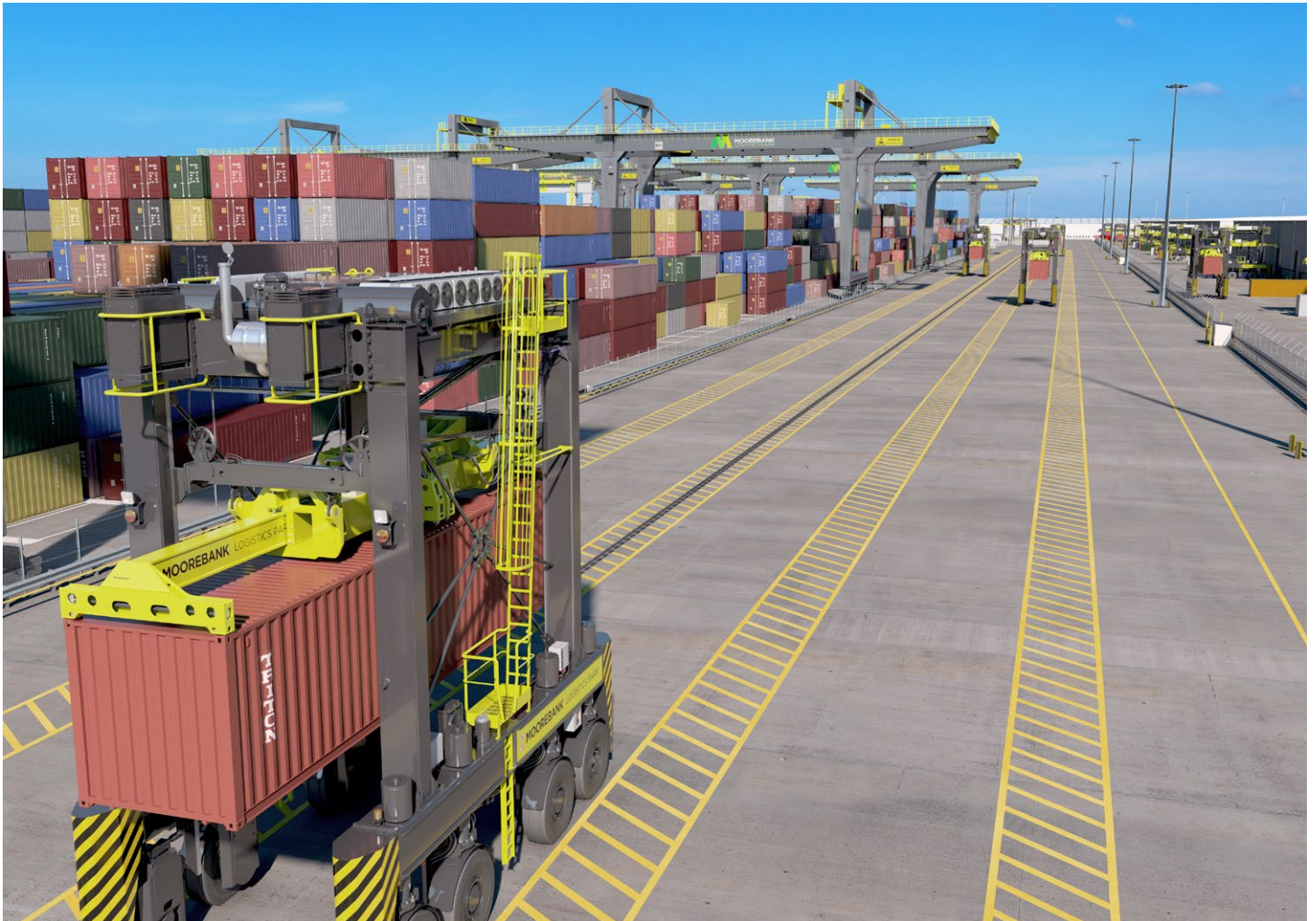
- » A jobs report commissioned by the Moorebank Intermodal Company shows the Moorebank Logistics Park will create 6,800 jobs when at full operating capacity. There will be 1,300 construction jobs generated during the development phases
- » The number of trucks on Sydney's roads related to Port Botany would be reduced by more than 2,700 per day.
- » Greenhouse gas emissions will be significantly reduced with latest modelling showing at full operation, freight truck movements on NSW roads will be reduced by 85 million kilometres a year – cutting CO2 emissions by more than 100,000 tonnes per annum.
- » Around \$11 billion in economic benefits will be created over 30 years, including \$120 million a year for the economy of south-western Sydney, through the improvements to productivity as well as reduced business costs, reduced road congestion and better environmental outcomes.



## Key Benefits

The Moorebank Intermodal Terminal will:

- » Help respond to the large increase in freight on the NSW transport network forecast for the coming years
- » Create an estimated 6,800 jobs and \$11 billion in economic benefits
- » Inject millions of investment dollars into South-West Sydney
- » Reduce heavy truck movements on Sydney's roads by transferring freight from road to rail
- » Simplify freight logistics to deliver savings to businesses and consumers



## Contact Us

Please visit our website



[www.simta.com.au](http://www.simta.com.au)  
for more information.

For specific questions, please



call 1800 986 465



or send written enquiries or feedback to  
[simta@elton.com.au](mailto:simta@elton.com.au)



PO Box 1488 Bondi Junction  
NSW 2022'