

COMMUNITY NEWS UPDATE

Pre-construction works for the Moorebank Intermodal Terminal Precinct have now commenced and we are pleased to update you on the progress of a number of other planning processes since our last newsletter.

Our demolition contractor Liberty has mobilised on the MPW site and commenced building demolition and remediation. This follows approval of our Construction Environmental Management Plan (CEMP) for the MPW Early Works (SSD-5066) received on 21 February. Until now the work involved the stripping out of building internals and minor site preparation works but the CEMP approval has meant in recent weeks they have moved on to commence the majority of the demolition and remediation works on the site.

Once we receive approval of the Aboriginal Salvage Strategy and Heritage Management Plan for MPW, we will also be able to proceed with the Aboriginal Heritage Salvage works for Aboriginal Heritage sites. The salvage works on these sites has the potential to encounter and conserve archaeological deposits and surface artefacts of moderate to high cultural significance.

On 12 December 2016, we received approval from the Planning Assessment Commission (PAC) for the MPE Stage 1 (SSD-6766) IMEX Terminal and Rail link. This is the development approval to build the IMEX terminal and rail link to allow the first containers to begin moving from Port Botany to the Moorebank site in 2018. We are currently waiting on further approval of the two CEMPs required before we can carry out the construction works. Aboriginal heritage salvage works associated with the Rail link component have now also commenced. The CEMP

approvals are expected in the coming months, paving the way for construction of these key project components to commence in May.

The status of the current planning applications is listed below, with further information provided in later sections of this newsletter.

- » Moorebank Precinct West (MPW) Stage 2 EIS – finalising our Response to Submissions Report
- » MPW Concept Plan Modification Application – preparing our Supplementary Response to Submissions
- » Moorebank Precinct East (MPE) Stage 2 EIS – preparing our Response to Submissions
- » MPE Concept Plan Modification Application – preparing our Response to Submissions

As is already clear, the planning processes required for a development of this type and scale can be extremely complex for anyone who hasn't worked in this area. We encourage you to visit the project website (www.simta.com.au) for updates and more detailed information relating to each planning application or the DP&E major projects website (www.planning.nsw.gov.au) or new Moorebank dedicated NSW Planning webpage (see inset). We will continue to keep you informed at each step along the way and explain how you can provide your views to SIMTA and DP&E.



Demolition of old building

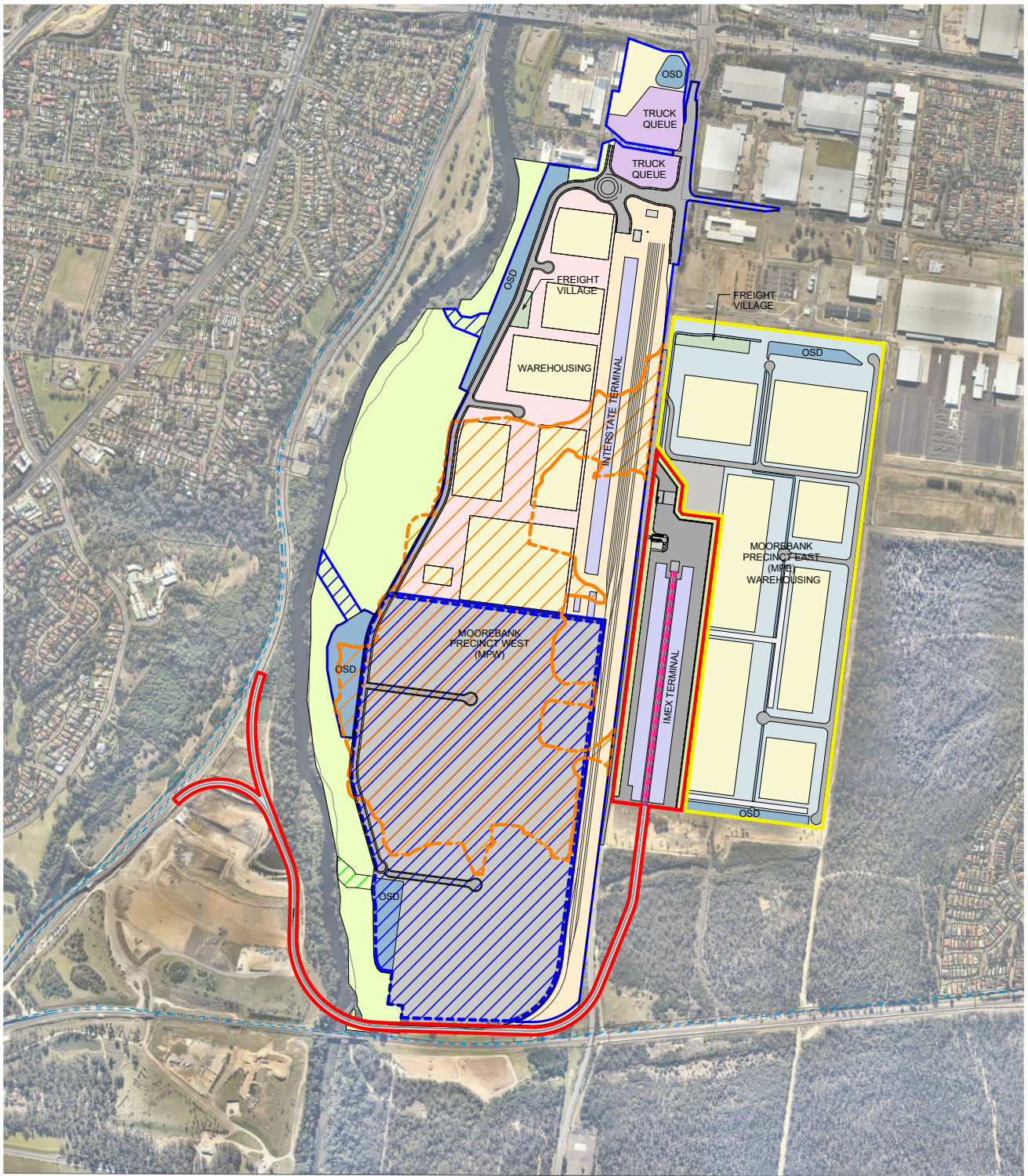
New Planning Resource

We are pleased to inform you that an additional resource was recently made available by DP&E to assist the community in understanding the planning processes involved in the Moorebank Intermodal Terminal project.

The website provides a simplified explanation of the processes underway and you can register to receive regular updates.

To view the website please visit: www.planning.nsw.gov.au/Assess-and-Regulate/Projects/Moorebank-Intermodal.

Moorebank intermodal terminal precinct



MPW SITE
(SSD 5066)



APPROVED MPW EARLY WORKS (SSD 5066)



PROPOSED MPW STAGE 2 (SSD 7709)
TERMINAL, RAIL AND WAREHOUSING



PROPOSED MPW STAGE 2 (SSD 7709)
BULK EARTHWORKS & SITE
CLEARING AREA ONLY

MPE SITE
(MP10_0193)

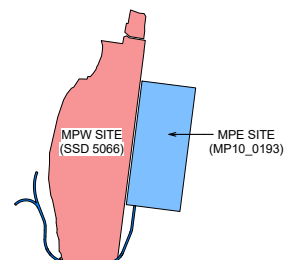


APPROVED MPE STAGE 1 (SSD 6766)
(IMEX TERMINAL & RAIL LINK)



PROPOSED MPE STAGE 2 (SSD 7628)
(WAREHOUSING)

KEY PLAN



MPW Stage 2 EIS (SSD16_7709)

The MPW Stage 2 EIS generally comprises an intermodal terminal, rail connection, 215,000m² of warehousing, upgrades to the intersection of Moorebank Avenue and Anzac Road and the importation and placement of 1,600,000m³ of clean fill for the bulk earthworks. The public exhibition of this EIS ended in November 2016 and SIMTA is currently preparing responses to the submissions received.

Of the submissions received, Wattle Grove was the largest submitting suburb with 30% of submissions, followed by Holsworthy with 19% and Moorebank with 17%. Many submissions addressed multiple aspects of the Proposal and the key concerns included Traffic (125 submissions), Air (60 submissions) and Noise (56 submissions), and all of these issues have been addressed by SIMTA through providing additional information or by referencing existing information contained within the original EIS.

As a result of responding to some submissions from interested stakeholders, along with further development of detailed design, SIMTA has made some minor amendments to the MPW Stage 2 Proposal. Details of the Amended Proposal will be included in the Response to Submissions Report which will be available on the Department of Planning website once submitted.

As referenced in previous newsletters, the import of clean fill previously included in the MPW Modification Application (SSD-5066MOD1) is now included in the MPW Stage 2 Proposal.

As noted on page 1 of this newsletter, we are in the final stages of preparing the Response to Submissions Report for this application and expect to lodge this with the DP&E shortly.

To view all of the details of the proposal, including the EIS and the Response to Submissions (once lodged with DP&E), please visit www.planning.nsw.gov.au (ref: SSD 16_7709) or the SIMTA website www.simta.com.au.

Exhibited Planning Applications

MPW Modification Application No. 1 (SSD5066_MOD1), MPE Concept Plan Modification (MP10_0193-MOD2) and MPE Stage 2 EIS (SSD16_7628)

Following our last newsletter in November 2016, where we notified you of the potential for the above three documents to be exhibited over the Christmas period, you would be aware that did occur. All three applications were on exhibition from 14 December 2016 to 24 February. Due to the Christmas holiday period, the exhibition end date was extended from the normal four-week period to a period of more than 10 weeks to ensure the community and other stakeholders had adequate time to make submissions.

We have now received the submissions made in relation to these applications and we are in the early stages of our analysis of the key issues whilst also working with stakeholders to clarify and resolve their concerns. We will update you on the progress of these documents in forthcoming newsletters.

To view the details of this proposal and modifications, visit the SIMTA website at www.simta.com.au.



Steel stripped from buildings during demolition

Resident Action Group lodges planning appeal

On March 16, the RAID protest group opposing the Moorebank intermodal project lodged an appeal with the Land & Environment Court asking the Court to refuse the planning approval issued in December for MPE Stage 1.

The group is represented by the Environmental Defenders Office (EDO) which says the case seeks a full reconsideration of the approval, including whether the development poses a risk to *Hibbertia fumana* – a plant thought to be extinct but discovered late last year on the site.

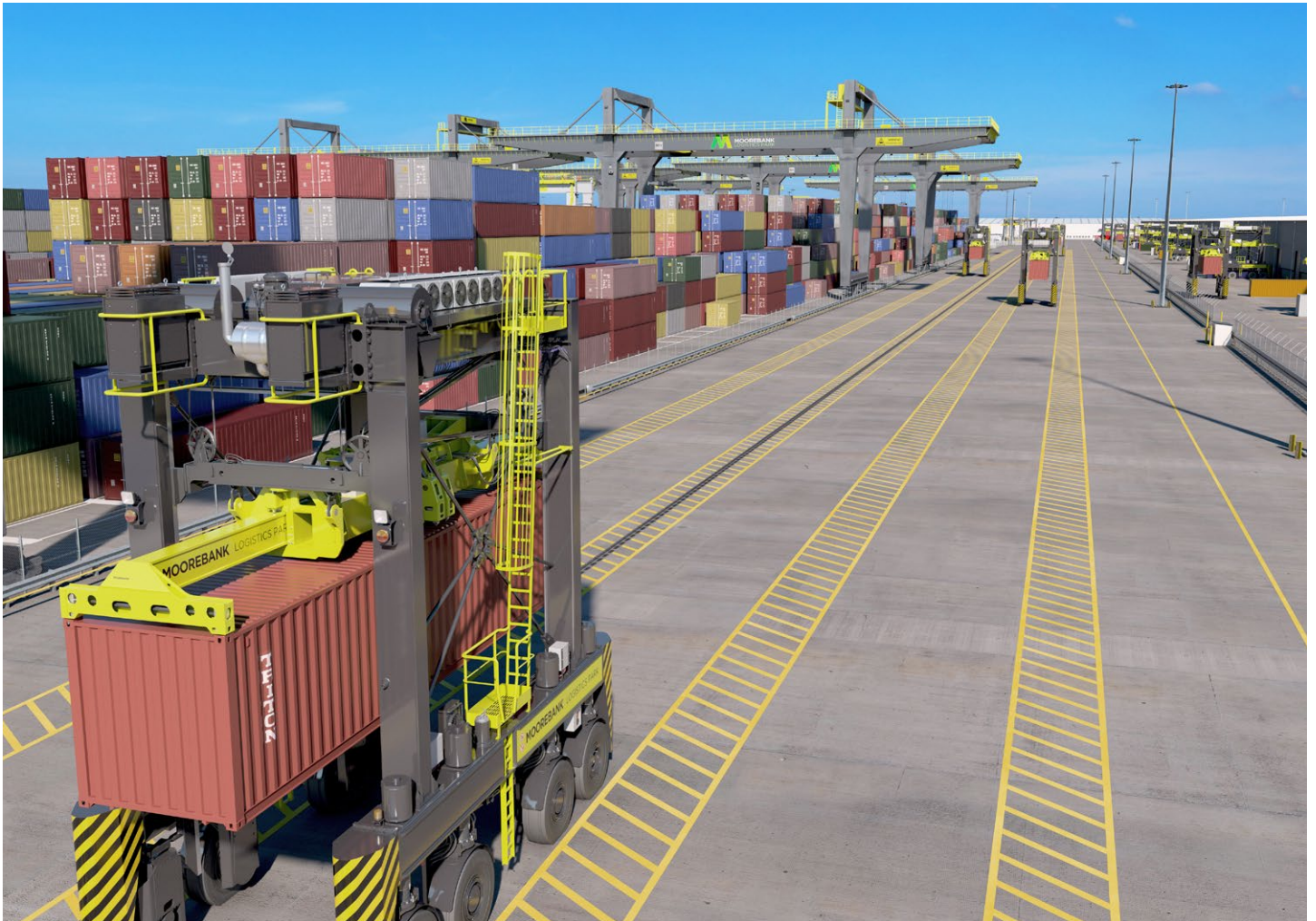
All of the *Hibbertia fumana* discovered by SIMTA's ecologists are located on bushland set aside for permanent conservation and none of the plants are on any land to be developed for the project.

SIMTA welcomes all of the facts being examined by the court.

Key Benefits

The Moorebank Intermodal Terminal will:

- » Help respond to the large increase in freight on the NSW transport network forecast for the coming years
- » Create around 7000 jobs
- » Inject millions of investment dollars into South-West Sydney
- » Reduce heavy truck movements on Sydney's roads by transferring freight from road to rail
- » Simplify freight logistics to deliver savings to businesses and consumers



Contact Us

Please visit our website



www.simta.com.au
for more information.

For specific questions, please



call **1800 986 465**



or send written enquiries or feedback to
simta@elton.com.au



PO Box 1488 Bondi Junction
NSW 2022'