

COMMUNITY NEWS UPDATE

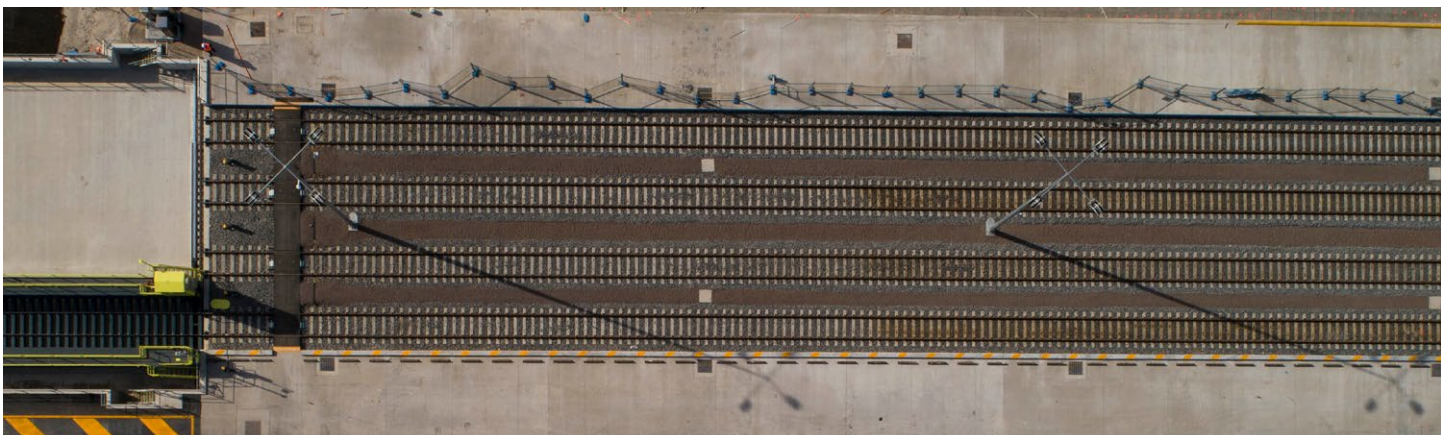
Commissioning continues for rail line and import/export terminal

Work has been continuing at a great rate through the first half of 2019 to complete our import/export rail terminal and the rail connection to the Southern Sydney Freight Corridor.

Contractors CPB (rail line) and Fulton Hogan (terminal) have now substantially completed their building work and final commissioning is now underway.

The terminal will open later this year under manual operation, while work continues to achieve full automation.

Testing will soon be underway, so Casula residents, those driving past the site or travelling between Holsworthy and Glenfield on the Sydney Trains rail line will soon see the first Qube trains coming and going from the site.





Moorebank Avenue upgrade to begin later in 2019

An upgrade to Moorebank Avenue will begin later this year, carried out by our contractor BMD.

The road will be raised to the height of the IMEX terminal and expanded to four lanes from Anzac Road to the main entry point to Moorebank Logistics Park.

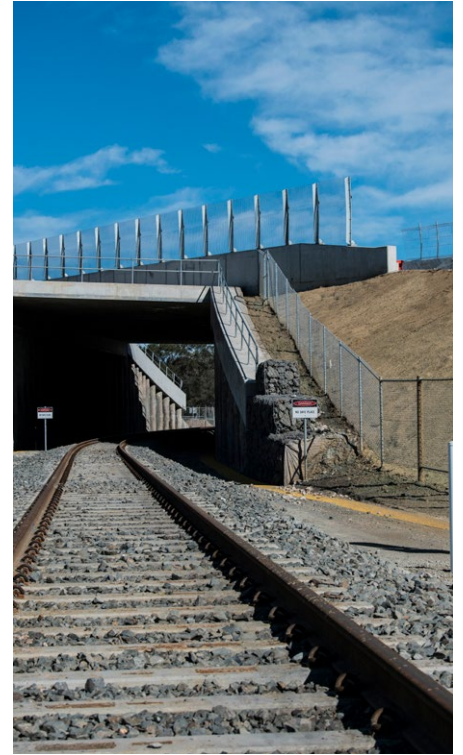
Drainage along the existing road will also be improved.

To carry out the upgrade without the inconvenience of long-term closures of Moorebank Avenue, work will be staged and a diversion road built on the land to the west of the existing alignment (where our interstate rail terminal will later be built).

The first step in preparing for this will be tree removal within our site which will commence in coming months.

Vegetation removal for our project is being offset via the permanent preservation of neighbouring high value bushland and also via the purchase and retirement of additional biodiversity credits. The environmental works will include ongoing weed removal and new plantings within several locations nearby, including ongoing management of the preserved environment in those places.

Biodiversity offset areas include the riparian zone along the banks of the Georges River opposite Leacocks Regional Park and in the bushland that separates Moorebank Logistics Park from Wattle Grove and the Holsworthy-Glenfield railway line.



Work affecting Moorebank Avenue until October

SIMTA contractors Fulton Hogan and CPB will be conducting work along Moorebank Avenue from August to October that will cause occasional interruptions outside of peak periods.

Work will include the installation of upgraded utilities near Anzac Road and Piccolo Me and the completion of guardrails at the rail bridge south of the Moorebank Logistics Park site.

Work will be completed between 10am and 3pm and, when required for safety reasons, overnight between 7pm and 7am.

While activities will include saw cutting and drilling, they are not expected to impact the nearest residences in Wattle Grove North and Casula.

Moorebank Avenue will remain open at all times, but a contra-flow will be in place at times. Please adhere to roadwork speed limits and follow signs and traffic controllers' directions.

If you have any questions about this work, please call 1800 986 465 or email simta@elton.com.au.

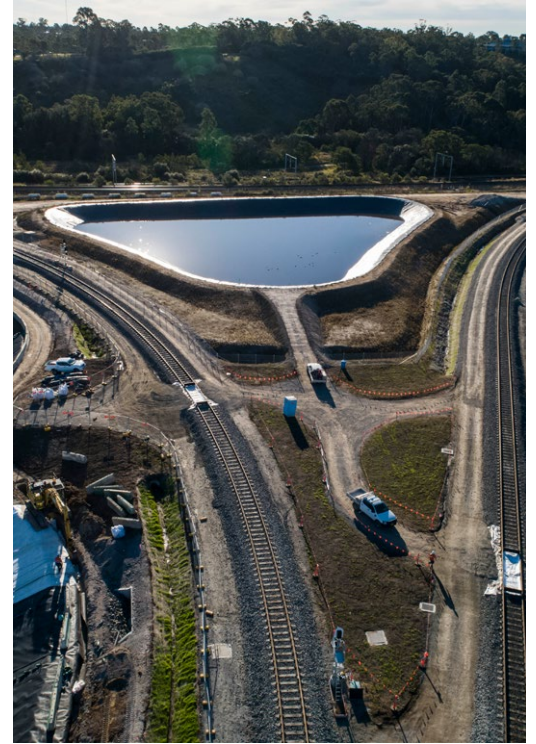
Community Consultative Committee turns one

Last week we held the sixth meeting of our Community Consultative Committee, following its establishment in June 2018.

The forum has proven a tremendously beneficial way to discuss progress, identify community issues and seek to resolve concerns from the various community, stakeholder group and Liverpool City Council representatives.

The committee is chaired by Dr Colin Gellatly and includes local representatives Fiona McNaught, Sharyn Cullis, Ian Pride, Jeffrey Thornton, Michael Russell and John Anderson, as well as Chris Guthrie from Liverpool City Council and representatives from our project management and communication team.

Minutes from CCC meetings are available at www.simta.com.au.



Awaiting decision on next phase for Moorebank Precinct West

Thank you to all community members who took the time to make submissions regarding Moorebank Precinct West Stage 2 and attend a public forum with the Independent Planning Commission at Brighton Lakes Golf Club on Tuesday, June 18.

This State Significant Development Application covers bulk earthworks as well as additional warehousing and the project's interstate rail terminal on the land between Moorebank Avenue and the Georges River.

Transcripts from the public hearing as well as meetings between the IPC commissioners and key local stakeholders are available online. Go to www.ipcn.nsw.gov.au/projects and search "Moorebank Intermodal".

Stay in touch

To hear the latest news about major work taking place across the project, make sure you bookmark www.simta.com.au

Major current works, project documents and minutes from the Community Consultative Committee meetings are regularly updated, and project newsletters such as this one are maintained online as well.

If you would like to receive this quarterly newsletter electronically, or if you know someone who would like to receive this newsletter but lives outside the distribution area, send an email to simta@elton.com.au.

Or if you have feedback related to project construction or want to find out more, call 1800 986 465 24 hours a day, seven days a week.



Contact Us

Please visit our website



www.simta.com.au
for more information



PO Box 1488
Bondi Junction NSW 2022

For specific questions, please



call 1800 986 465



or send written enquiries or feedback to
simta@elton.com.au