

COMMUNITY NEWS UPDATE

Intermodal operation to begin later in 2019

Welcome to the first SIMTA community newsletter of 2019 – the year that Moorebank Logistics Park will commence operation.

With work continuing to advance on our Import-Export (IMEX) Terminal, rail connection to the Southern Sydney Freight Line and Target's 40,000 square metre warehouse alongside Moorebank Avenue, we are beginning to look forward to the second-half of the year, when the first trains will bring shipping containers to the site from Port Botany.

Elsewhere on the project, we are continuing major earthworks across Moorebank Precinct East (MPE) ahead of future warehousing and internal road construction, detailed design is continuing for an upgrade to Moorebank Avenue and preparations are being made for the commencement of earthworks on Moorebank Precinct West (MPW).

A tremendous amount of project milestones have been reached since our last update in December 2018, and we will detail some of these in the following pages.

And remember that for information about the SIMTA project, to ask a question or leave feedback, you can call 1800 986 465, email simta@elton.com.au or visit www.simta.com.au at any time.



Planning updates

We are finalising our final submissions for the MPW Stage 2 State Significant Development Application, which covers bulk earthworks as well as additional warehousing and the project's interstate rail terminal on the land between Moorebank Avenue and the Georges River.

The application will soon be lodged with the NSW Independent Planning Commission, which is delegated by the Minister for Planning and Department of Planning and Environment to

evaluate large development proposals such as those guiding development of Moorebank Logistics Park.

The IPC will likely hold a public meeting like those that have taken place for previous stages of our development.

In other news, we have also now finalised the project's Voluntary Planning Agreement, which will see Simta and the Moorebank Intermodal Company invest \$48 million in local road network improvements, under the management of the NSW Government.



Major connections completed for new freight rail link

The first months of 2019 have seen a series of major milestones realised for the project's rail corridor, which now spans the Georges River and passes beneath Moorebank Avenue traffic.

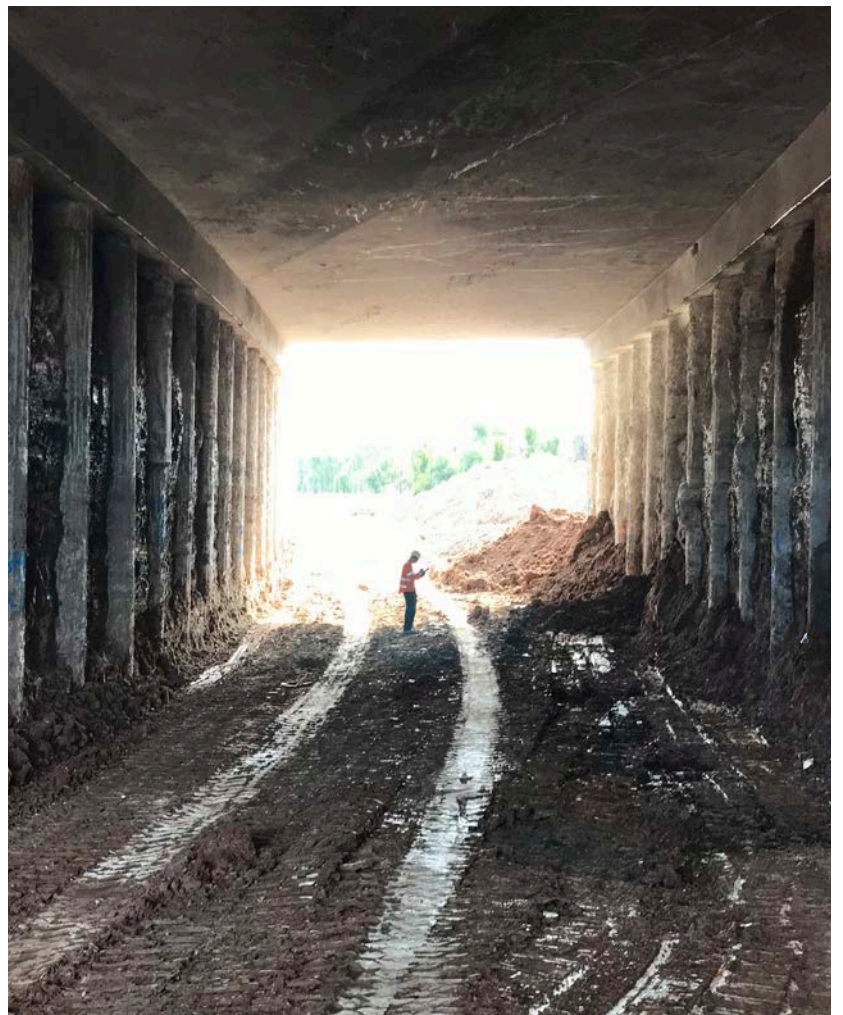
Top-down construction of the underpass meant the structural roof of the rail underpass was able to be constructed without lengthy closures to the busy road up above.

The completion of work on the structure in February allowed our team to excavate beneath the road to create the new tunnel our trains will pass through as they arrive at and depart from the IMEX Terminal.

Work near the underpass also included relocating and upgrading a number of essential utilities.

Further west, the final girders of the new Georges River Bridge were lifted into place in early March by the largest crane in operation in Australia. Work is now continuing to complete the concrete bridge deck, after which the rail line can be laid.

In all, the bridge span features 30 concrete girders, each weighing about 50-tonne, which were cast in NSW by CPB Contractors.





Weekend rail construction, May 10 and 11

CPB Contractors will have crews working on the Southern Sydney Freight Line on the weekend of May 10 and 11, which may be audible to some residents in Casula and Glenfield.

Work is taking place to finalise signalling and other necessary infrastructure ahead of the SIMTA rail link opening later this year.

Trucks will access the rail corridor from gates in Casula, so residents may notice some increased traffic and on-street parking.

If you have questions about the work, call 1800 986 465, email simta@elton.com.au or visit www.simta.com.au at any time.

Weekend closure to resurface Moorebank Avenue rail bridge

To complete the road surfacing of the final alignment of Moorebank Avenue above the new rail underpass, a weekend closure of Moorebank Avenue either side of the Holsworthy-Glenfield rail line crossing will be required.

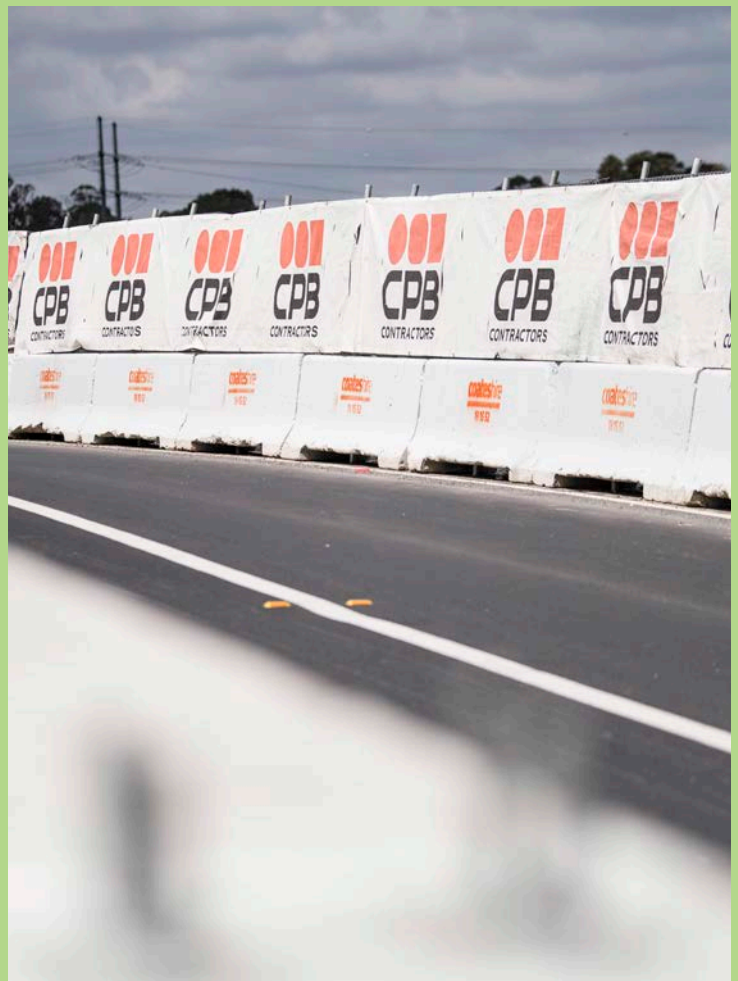
The road will be closed to through traffic between Cambridge Avenue and Anzac Road from 9pm on Friday May 3 to 5am on Monday May 6.

The road surface on approach to the bridge will be smoothed and have its final finish applied to ensure the best experience for all road users.

Digital messaging boards will advise motorists of detours, which will be via the Hume Highway and M5 between Moorebank and Casula/Glenfield.

Customers of Piccolo Me chasing that weekend caffeine fix will still be able to access the cafe from the Anzac Road end of Moorebank Avenue.

For further information call 1800 986 465, email simta@elton.com.au or visit www.simta.com.au at any time.





Target warehouse on track for mid-year completion

Target Australia, one of the country’s biggest retail and online stores, will operate its NSW distributions centre from Moorebank from 2019.

Target crews are already on-site carrying out the fitout of their new state-of-the-art warehouse.

The warehouse features an enormous solar farm on its roof, with the panels airlifted in using helicopters in March and April.

The new distribution centre will begin operation later in 2019.

The Target warehouse measures almost 40,000 square metres – an incredible number given it represents less than five per cent of the eventual 850,000 square metres of warehousing that will be provided at Moorebank Logistics Park.

Daytime and night works on Moorebank Avenue until June

SIMTA contractors will be carrying out utility investigation and installation work adjacent to Moorebank Avenue throughout the rest of April and through to June.

Work will be largely carried out during regular construction hours but also as night works when required to minimise impacts to motorists during the morning and afternoon peak periods. Work will take place between the signalised entry to MPW and the M5 Motorway, as well as on Anzac Rd.

Changed traffic conditions will be in place at times, including contra-flow arrangements and a reduced speed limit of 40km/h during the work. Please follow the direction of traffic controllers and look for advice regarding changed traffic conditions on digital messaging boards.

Should you have any questions about this work, please call 1800 986 465, email simta@elton.com.au or visit www.simta.com.au.



Contact Us

Please visit our website



www.simta.com.au
for more information



PO Box 1488 Bondi Junction
NSW 2022

For specific questions, please



call 1800 986 465

or send written enquiries or feedback to
simta@elton.com.au