

Moorebank Precinct West Intermodal Terminal Facility - Modification

Non-Aboriginal (Historical) Heritage
Assessment



SIMTA

SYDNEY INTERMODAL TERMINAL ALLIANCE

Part 4, Division 4.1, State Significant
Development



artefact

30 May 2016

Shannon Blackmore
Senior Environmental Consultant
Arcadis

Dear Shannon,

Re: MPW Concept Plan Modification – Non-Aboriginal (Historic) Heritage Memo

1.1 Introduction

The Moorebank Intermodal Company (MIC) has received Concept Plan Approval, under Part 4, Division 4.1 of the *Environmental Planning and Assessment Act 1979* (EP&A Act), to develop the Moorebank Precinct West Terminal Project (MPW Project) on the western side of Moorebank Avenue, Moorebank, in south-western Sydney (the MPW site).

On 4 June 2015, the MIC, with the approval of the Commonwealth Government, entered an agreement with the Sydney Intermodal Terminal Alliance (SIMTA) under which SIMTA will obtain approvals, build and operate all stages of the MPW Project at Moorebank. SIMTA is seeking approval to modify the Moorebank Intermodal Company (MIC) Concept Proposal and Early Works (Stage 1) approval (SSD_5066) (MPW Concept Plan Approval).

The Environmental Impact Assessment (EIS) prepared for the Concept Plan Approval identified that fill material required for the development of the MPW site would be largely sourced from excavations within the MPW site and hence imported fill volumes for the project would be small. Subsequent civil design development for the MPW Project has identified that fill required to be imported to the MPW site is estimated at 1,600,000 cubic metres (m³). It is proposed to undertake additional site preparatory works, including the import, placement and stockpiling of clean fill, as a modification to the approved Stage 1 (Early Works).

This non-Aboriginal (Historic) heritage assessment report has been prepared to support an application made under section (s) 96(2) of the EP&A Act to modify the MPW Concept Plan Approval (SSD_5066).

1.1.1 Proposed Works

It is proposed to undertake additional site preparatory works, including the import, placement and stockpiling of clean fill, as a modification to the approved Early Works. The proposed modification would result in an intensification of activity associated with the approved Early Works. The works, for which a modification is sought (the Modification Proposal), include the following:

- Minor vegetation removal (not Endangered Ecological Communities, slightly above that provided within Early Works)
- Import, by truck, of approximately 1,600,000m³ of fill (from offsite locations)

- Crushing and screening of oversized materials and demolition materials stockpiled during Early Works, for direct placement on site
- Stripping and stockpiling of topsoil within the area of impact, cut and fill (within the primary earthworks areas) and stockpiling of clean fill within the primary earthworks areas (see Figure 1)
- Temporary sediment and erosion control works, including onsite detention basins (greater than those envisaged within the Early Works)
- Establishment of temporary internal haulage routes, construction compounds (including, but not limited to, a materials crusher and other plant and equipment) (additional to those included within Early Works).

Figure 1 shows the location and extent of the Modification Proposal, which would occur largely within the footprint of the approved Early Works.

Figure 1 Location and extent of Modification Proposal



LEGEND

- Area of impact (modification subject)
- Temporary construction sediment basins
- Primary earthworks areas (modification subject)
- Northern access
- Southern access
- Watercourse
- Existing railway
- Primary haul road

ARCADIS AUSTRALIA PACIFIC PTY LTD
 ABN 75 104 485 226
 Level 5, 141 Walker St | North Sydney NSW 2060
 P: +61 (0) 2 8907 9000 | F: +61 (0) 2 8907 9001

Scale: 1:15,000 @ A4



Date: 20/06/2016 Path: \\ho-aus-ns-6-01\jobs\AA008765\L-G\ISA_Current\B_Maps\CPM\AA008765_MPW\CPM_Fg004_EarthworksAreaModificationOverview_A4_f1v6.mxd
 Created by: GC
 QA by: WO

1.1.2 Assessment Purpose

This non-Aboriginal (Historic) heritage assessment report has been prepared to provide further information on, and environmental assessment of, the Modification Proposal. The Modification Proposal has been reviewed against the documentation prepared for the MPW Concept Plan Approval, the Secretary’s Environmental Assessment Requirements (SEARs) issued for the MPW Concept Plan (SSD_5066) and applicable legislation and guidelines to determine whether the works and associated impacts of the Modification Proposal are ‘substantially the same development’ as that proposed under the MPW Concept Plan Approval.

1.2 Previous Heritage (Historic) Investigations

Navin Officer Heritage Consultants (NOHC) were commissioned in 2010 by Parsons Brinckerhoff (PB) to produce the European Heritage Technical Paper for the MPW Concept Plan EIS.¹ In addition to NOHC’s assessment, Biosis collated information from previous assessments within the MPW site to produce the European Heritage chapter of the MPW Concept Plan EIS.²

The Ministers Conditions of Approval (MCoA) outlines heritage impact remediation works approved for Early Works at each of the heritage items and archaeological sites identified within the MPW site.

1.3 Impact Assessment

Proposed works includes substantial surface impact within the Modification Proposal area of impact. This includes vegetation removal, stripping and stockpiling of topsoil within the area of impact, temporary sediment and erosion control works and establishment of internal haulage routes. A more detailed description of the proposed works is included in Section 1.1.1.

The location of identified heritage items in relation to the approved Early Works and the Modification Proposal is included as Figure 2. A summary of impacts is outlined in Table 1.

Table 1: Concept Plan Modification impact assessment

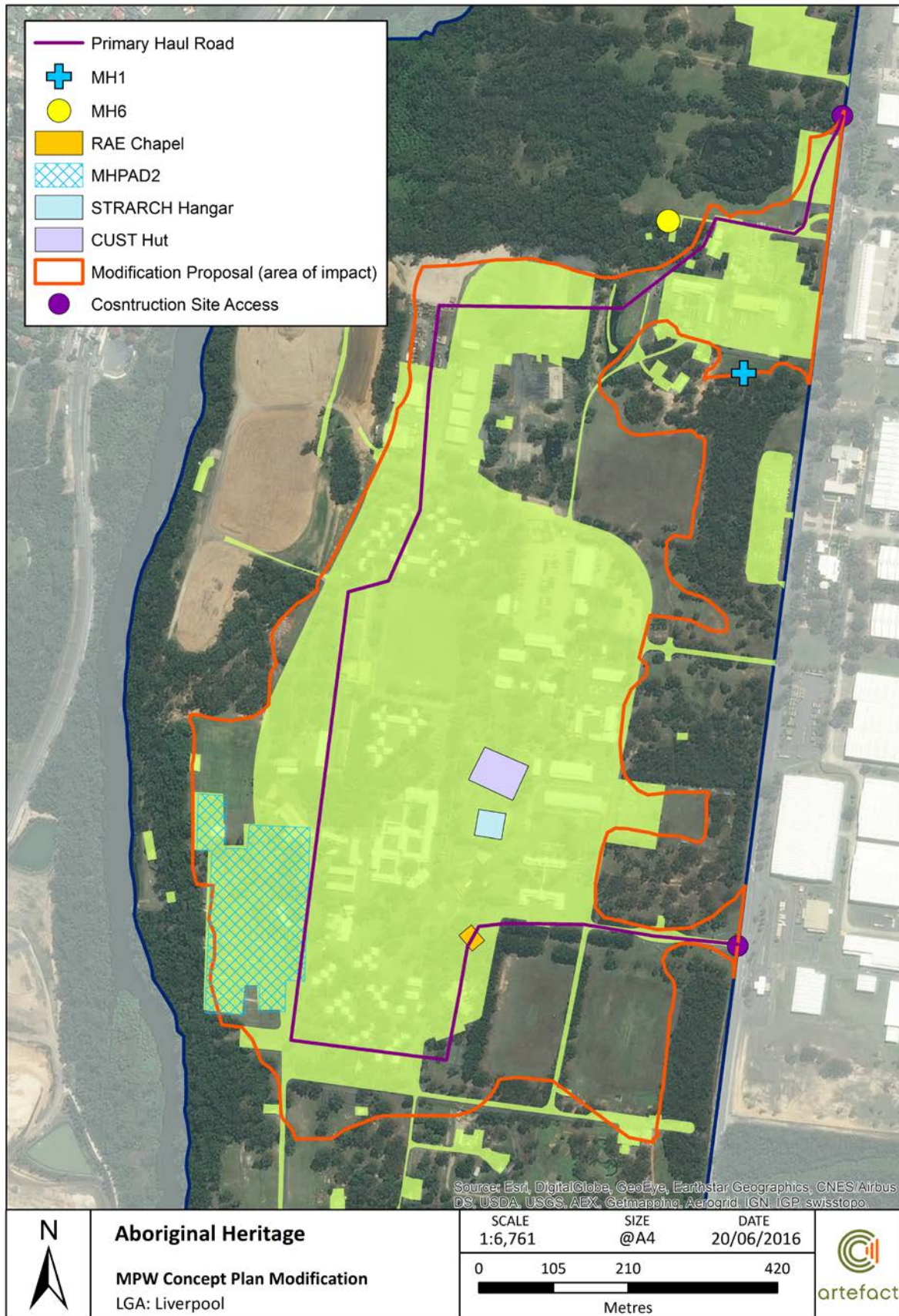
Item	Impacts	Aspects of the Modification Proposal that respect or enhance the item’s heritage significance	Impacts on items heritage significance	Increase in impacts from Early Works?
Moorebank Cultural Landscape	Building removal, vegetation removal, earthworks	Retention of elements of the landscape outside the Modification Proposal area	Disturbance of archaeological deposits, demolition of remaining landscape elements, loss of portions of the existing landscape setting	No

¹ Navin Officer Heritage Consultants (NOHA), 2014 ‘Moorebank Precinct West Terminal Aboriginal Heritage Assessment Report. Report prepared for Parsons Brinckerhoff

² Biosis, 2014 ‘Moorebank Precinct West Terminal Project Environmental Impact Statement – European Heritage’, Chapter 21.

Item	Impacts	Aspects of the Modification Proposal that respect or enhance the item's heritage significance	Impacts on items heritage significance	Increase in impacts from Early Works?
RAAF STRACH Hangar	Removal	Not applicable / none	The demolition would result in the loss of significance in terms of technical value	No
CUST Hut	Removal	Not applicable / none	The demolition would result in the loss of significance in terms of technical value and removal of archaeological potential associated with former earthen floor	No
RAE Chapel	Removal	Not applicable / none	Removal would result in the loss of significance in terms of technical value	No
MH1 Dog Cemetery	Removal	Not applicable / none	Removal would result in the loss of social significance	No
MHPAD2	Removal	Not applicable / none	Removal would result in the loss of significance in terms of research potential	No
Commemorative Garden	Partial removal	Not applicable / none	Removal of a portion of the Commemorative Garden would result in a loss of social significance	No

Figure 2: Location of identified heritage items in relation to the Modification Proposal and Early Works footprints



1.4 Mitigation Measures

A summary of mitigation measures from the revised environmental mitigation measures (REMMs) and the Ministers Conditions of Approval (CoA) as applicable to the approved Modification Proposal are outlined in Table 2. This information is based on the assumption that all mitigation measures for each individually identified heritage item or archaeological site within the Modification Proposal area has been completed as part of Early Works.

Table 2: Mitigation measures from REMMs and MCoA

Item/s	REMMs / CoA	Mitigation Measure to be implemented as part of approved Early Works
MPW site	RCoA B6	The Applicant shall not harm, modify or otherwise impact any heritage items outside the subject site.
MPW site	RCoA D20(c)	As part of the CEMP for the SSD, the Applicant shall prepare and implement a Construction Heritage Management Plan (CHMP) to ensure construction impacts on non-Aboriginal heritage will be appropriately avoided, minimised and managed. The Plan shall be developed in consultation with OEH, the relevant Council and the NSW Heritage Council. The specific requirements for the CHMP are outlined in Section 1.5.1 below.
Unanticipated Discoveries	REMMS 13K	The Unanticipated Discoveries Protocol (detailed in Appendix 7 of Technical Paper 11 – European Heritage Impact Assessment in Volume 8) would be followed in the event that historical items or relics or suspected burials are encountered during excavation works.

1.5 Recommendations

The following recommendations from the EIS, REMMs and MCoA are made for the Modification Proposal prior to commencement of Early Works.

1.5.1 MPW site (incorporating the Moorebank Cultural Landscape)

A CHMP should be prepared as part of the CEMP for the SSD. An outline from the MCoA (D20[c]) of what the CHMP should include is presented in Table 5.

Table 3: RCoA recommendations for preparation of a CHMP

MCoA item number (D20)	Description
(ii) a)	Identification of heritage Items directly and indirectly affected by the Early Works
(ii) b)	<p>Consideration of methods to prevent damage to any retained heritage items, including:</p> <ul style="list-style-type: none"> ○ Procedures for identifying minimum working distances to retained heritage items (including, at minimum, vibration testing and monitoring) ○ Detailed options for alteration of construction methodology should preferred values for vibration be exceeded ○ Commitment to implementing those options if preferred values for vibration are likely to be exceeded
(ii) c)	Details of management measures to be implemented to prevent and minimise impacts on heritage items (including further heritage investigations, archival recordings and/or measures to protect unaffected sites during construction works in the vicinity)
(ii) d)	Details of monitoring and reporting requirements for impacts on heritage items
(ii) e)	Procedures for dealing with previously unidentified heritage objects, (including cessation of works in the vicinity, assessment of the significance of the item(s) and determination of appropriate mitigation measures including when works can re-commence by a suitably qualified and experienced archaeologist in consultation with the OEH, NSW Heritage Council and the Secretary, assessment of the consistency of any heritage impacts against the approved impacts of the SSD, and, where relevant, notification of the Heritage Council of NSW in accordance with section 146 of the Heritage Act 1977

MCoA item number (D20)	Description
(ii) f)	Heritage training and induction processes for construction personnel (including procedures for keeping records of inductions and obligations under this approval including site identification, protection and conservation of non-Aboriginal cultural heritage)
(iii)	Mechanisms for the monitoring, review and amendment of this plan.

1.5.2 Specific REMMs and RCoA Mitigation Measures

Specific mitigation measures as listed in Table 2 should be completed prior to commencement of any works that will affect historic heritage items on the MPW site that have not already been assessed and considered under the approved Stage 1 Early Works.

In summary, Historic heritage impacts associated with the Modification Proposal would result in no increase in impacts from those assessed for the Early Works under the MPW Concept Plan EIS, RtS and RStS. Through the implementation of the mitigation measures approved for the MPW Concept Plan and the MCoA identified above, Historic heritage impacts associated with the Modification Proposal are expected to be consistent with the impacts predicted within the MPW Concept Plan EIS.