



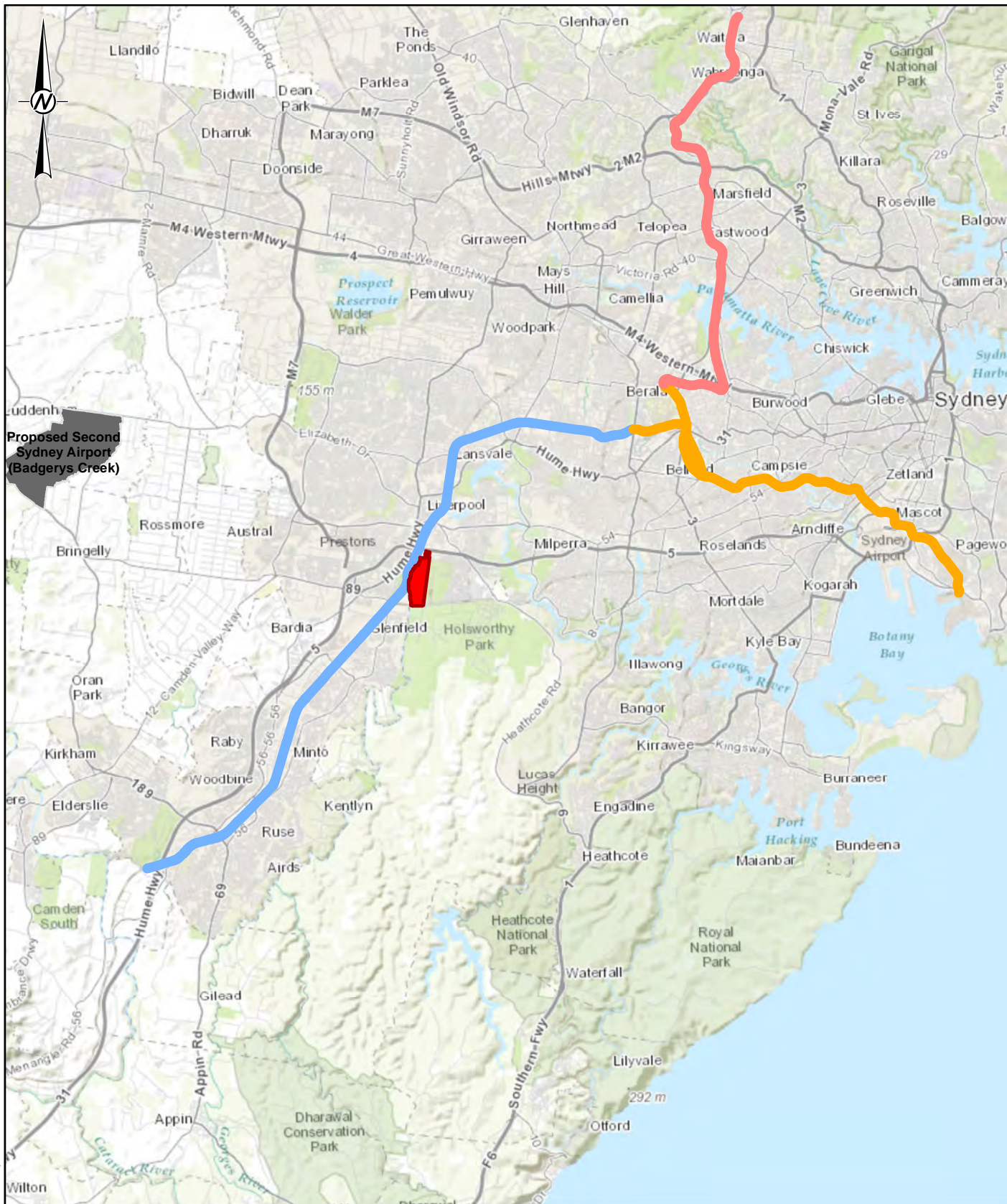
APPENDIX A

Figures



MPW STAGE 2 - GIR

A001	SITE LOCATION PLAN - REGIONAL
A002	SITE LOCATION PLAN - LOCAL
A003	PLAN OF INVESTIGATION LOCATIONS
A003A	PLAN OF INVESTIGATION LOCATIONS – SHEET A
A003B	PLAN OF INVESTIGATION LOCATIONS – SHEET B
A004	GROUND SURFACE LEVEL CONTOURS
A005	HISTORICAL AERIAL PHOTOGRAPH - 1930
A006	HISTORICAL AERIAL PHOTOGRAPH - 1956
A007	HISTORICAL AERIAL PHOTOGRAPH - 1961
A008	HISTORICAL AERIAL PHOTOGRAPH - 1965
A009	HISTORICAL AERIAL PHOTOGRAPH - 1970
A010	HISTORICAL AERIAL PHOTOGRAPH - 1978
A011	HISTORICAL AERIAL PHOTOGRAPH - 1986
A012	HISTORICAL AERIAL PHOTOGRAPH - 1994
A013	HISTORICAL AERIAL PHOTOGRAPH - 2005
A014	HISTORICAL AERIAL PHOTOGRAPH - 2010
A015	CURRENT AERIAL PHOTOGRAPH - 2014
A016	SITE WATER SYSTEMS
A017	HISTORICAL GEOTECHNICAL INVESTIGATION LOCATIONS
A018	REGIONAL GEOLOGY MAP
A019	SOIL LANDSCAPES MAP
A020	GROUNDWATER CONTOURS - 2011
A021	GROUNDWATER CONTOURS - 2014
A022	SECTION LOCATIONS (not used)
A023 to A025	INFERRED SUBSURFACE SECTION A – A'
A024 to A028	INFERRED SUBSURFACE SECTION B – B'
A029 to A031	INFERRED SUBSURFACE SECTIONS C – C' TO E - E'
A032 to A035	INFERRED SUBSURFACE SECTION F - F' TO I - I'
A036	TOPSOIL THICKNESS CONTOURS (UNIT 1A)
A037	ANTHROPOGENIC FILL (UNIT 1B)
A038	FILL THICKNESS CONTOURS (UNIT 1C)
A039	TOP OF ROCK CONTOURS (TOP OF UNITS 4B and 5B)
A040	ACID SULPHATE SOIL MAP
A041	ESTIMATED SETTLEMENTS UNDER 40KPa SLAB LOADING



Proposed Second Sydney Airport (Badgerys Creek)

LEGEND

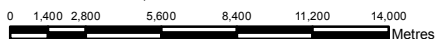
- Approximate Site Boundary
- Port Botany Rail Upgrade
- North Sydney Freight Corridor
- South Sydney Freight Line

NOTES

1. The Approximate Site Boundary represents the spatial extent of the Golder Geotechnical and Geochemical project.

REFERENCE

1. Basemap (World Topo Map) sourced from Esri and its data providers.
2. Regional features sourced from Figure 2.1 in Chapter 2 of the 'Moorebank Intermodal Terminal Project – Environmental Impact Statement', prepared for the Moorebank Intermodal Company by Parsons Brinckerhoff, 3 October.



REFERENCE SCALE: 1:280,000 (at A4)
PROJECTION: GDA 1994 MGA Zone 56

CLIENT
THE TACTICAL GROUP

PROJECT
MPW GEOTECHNICAL SITE INVESTIGATION

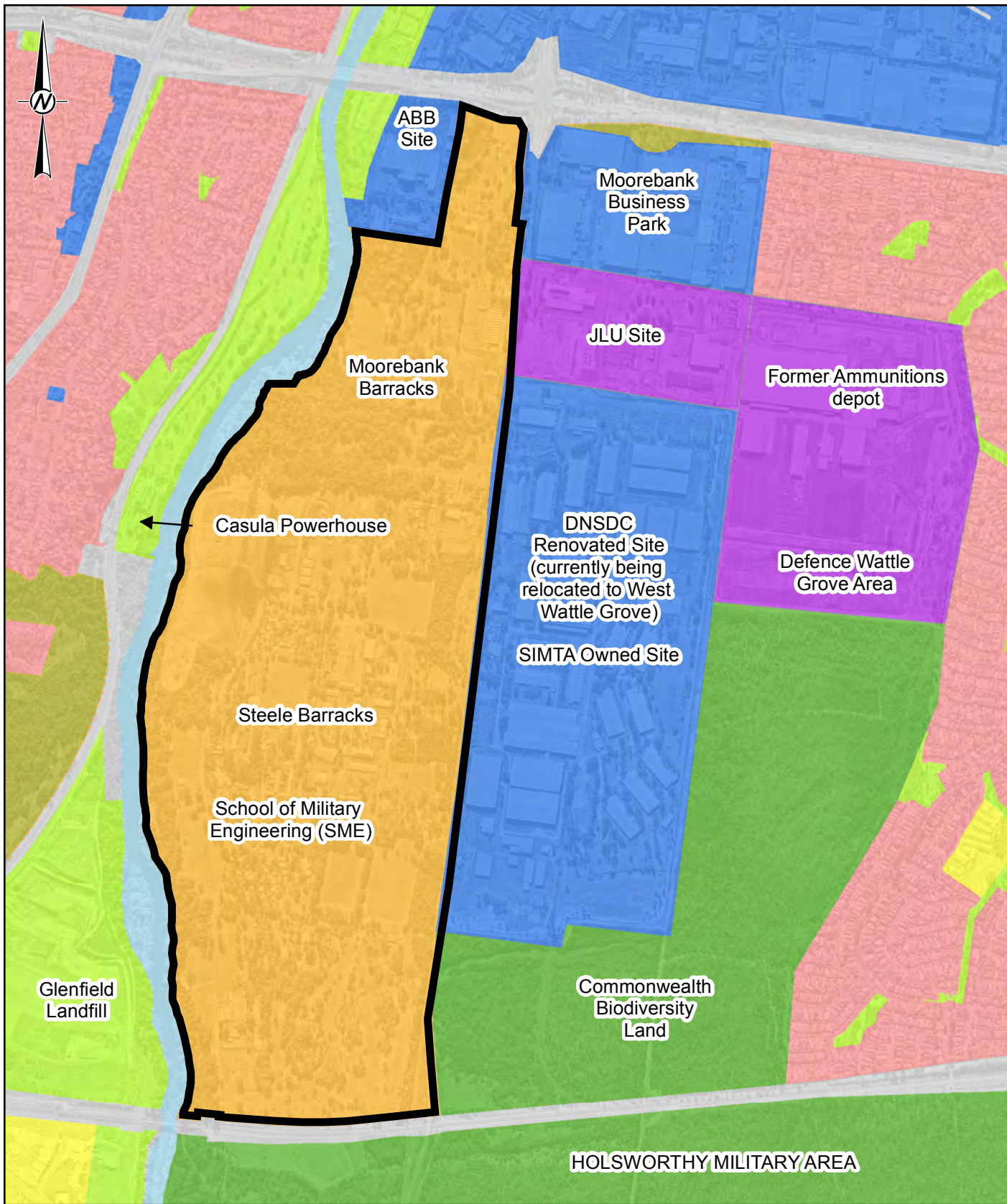
TITLE
GEOTECHNICAL INTERPRETIVE REPORT: SITE LOCATION PLAN - REGIONAL

CONSULTANT	YYYY-MM-DD	2016-09-02
	PREPARED	KJS
	DESIGN	-
	REVIEW	NRS
	APPROVED	NRS

PROJECT 1416224 DOCUMENT 016 Rev. 2 **FIGURE A001**

Path: \\golder\gdp\sydney\Jobs\geotech\20161416224_SINTA_Stage_1_Moorebank\Technical_Docs\GIS\Project\016-Rev\1147623070-016-0001-RevA.mxd

28mm IF THIS MEASUREMENT DOES NOT MATCH WHAT IS SHOWN, THE SHEET SIZE HAS BEEN MODIFIED FROM A4



LEGEND

MPW Site Boundary	Infrastructure (Roads)	Vegetation
Commercial/Industrial	Open Space/Recreation	Vegetation (environment protection)
Commonwealth	Residential	Waterway
Defence	Special Uses	

NOTES

1. The Approximate Site Boundary represents the spatial extent of the Golder Geotechnical and Geochemical project.

REFERENCE

1. Aerial Image sourced from Nearmap.
2. Local features sourced from Figure 2.2 in Chapter 2 of the 'Moorebank Intermodal Terminal Project – Environmental Impact Statement', prepared for the Moorebank Intermodal Company by Parsons Brinckerhoff, 3 October



REFERENCE SCALE: 1:15,000 (at A4)
PROJECTION: GDA 1994 MGA Zone 56

CLIENT
THE TACTICAL GROUP

PROJECT
MPW GEOTECHNICAL SITE INVESTIGATION

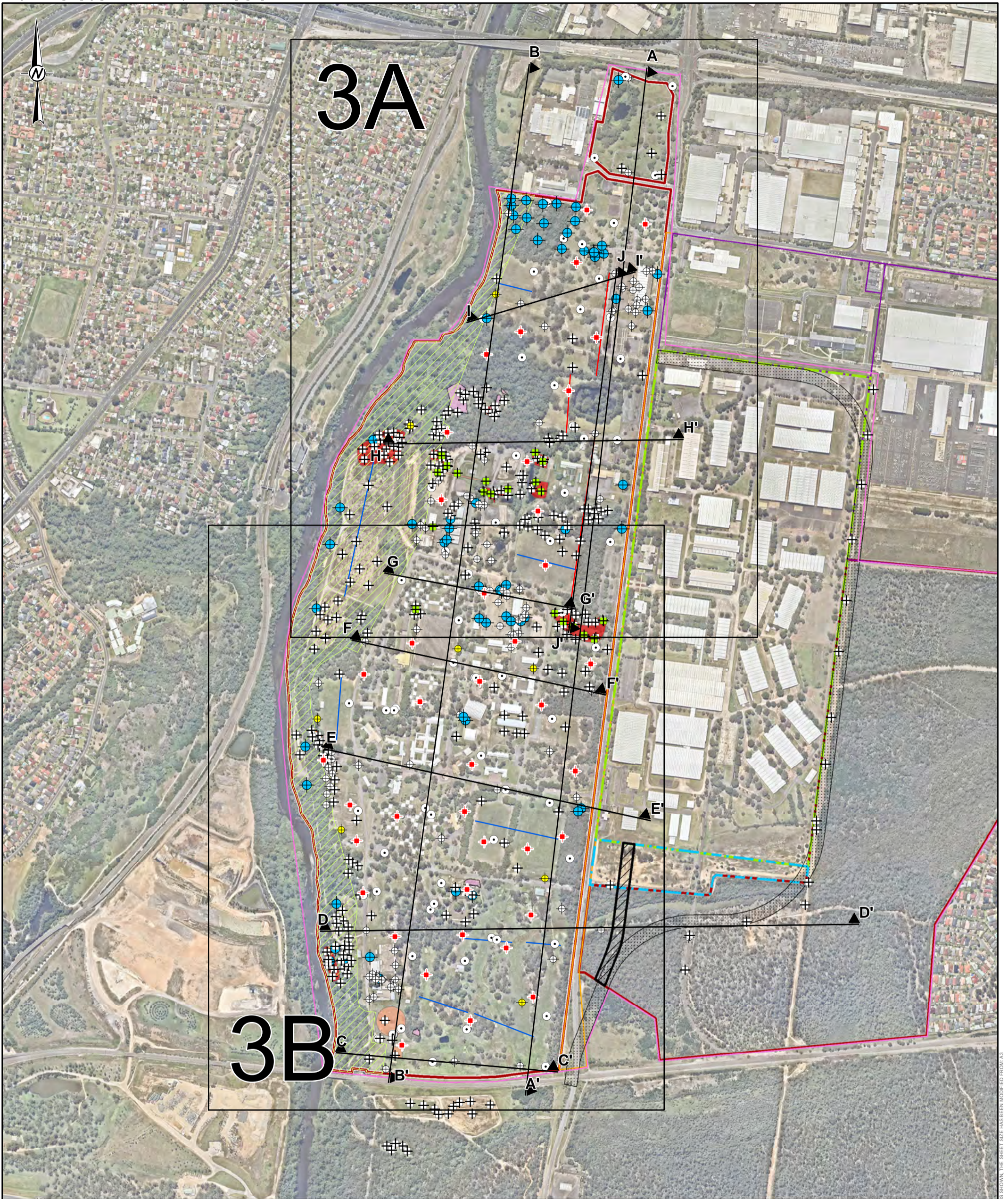
TITLE
GEOTECHNICAL INTERPRETIVE REPORT: SITE LOCATION PLAN - LOCAL

CONSULTANT	YYYY-MM-DD	2016-09-02
	PREPARED	KJS
	DESIGN	-
	REVIEW	NRS
	APPROVED	NRS

PROJECT 1416224 DOCUMENT 016 Rev. 2 **FIGURE A002**

Path: J:\geo\2014\1416224_SIMTA_Stage_1\Moorebank\Technical Docs\GIS\Project\016-Rev\11416224_016_Rev_1_F002.mxd

28mm IF THIS MEASUREMENT DOES NOT MATCH WHAT IS SHOWN, THE SHEET SIZE HAS BEEN MODIFIED FROM A4



LEGEND

The Precinct (approximate)	Rail Access Corridor	Previous Investigation locations
MIC Property West	Anthropogenic Fill (confirmed)	Borehole
Bootland (MIC Property East)	Anthropogenic Fill (potential)	CPT
Butchers Knife	Stockpile	Groundwater Well
SIMTA Property	Investigation locations (Golder 2016)	Test Pit
Joint Defence	Borehole	ETS seismic refraction line
Logistics Complex Moorebank	Hand dug pit	EarthTech seismic refraction line
Moorebank	Test pit	Section Lines
Moorebank Ave Realignment		

NOTE(S)
1. Conservation Area digitised from Drawing PREC-RCG-AR-SKC-00002a (Masterplan Precinct, 09/06/2016 issue K)

REFERENCE(S)
1. Property boundaries provided by Land and Property Information NSW

COPYRIGHT
Aerial Photography Copyright 1.NearMap Pty Ltd.

0 420 840
1:10,000
PROJECTION: GDA 1994 MGA Zone 56
METRES

CLIENT
THE TACTICAL GROUP

PROJECT
MPW GEOTECHNICAL SITE INVESTIGATION

TITLE
PLAN OF INVESTIGATION LOCATIONS

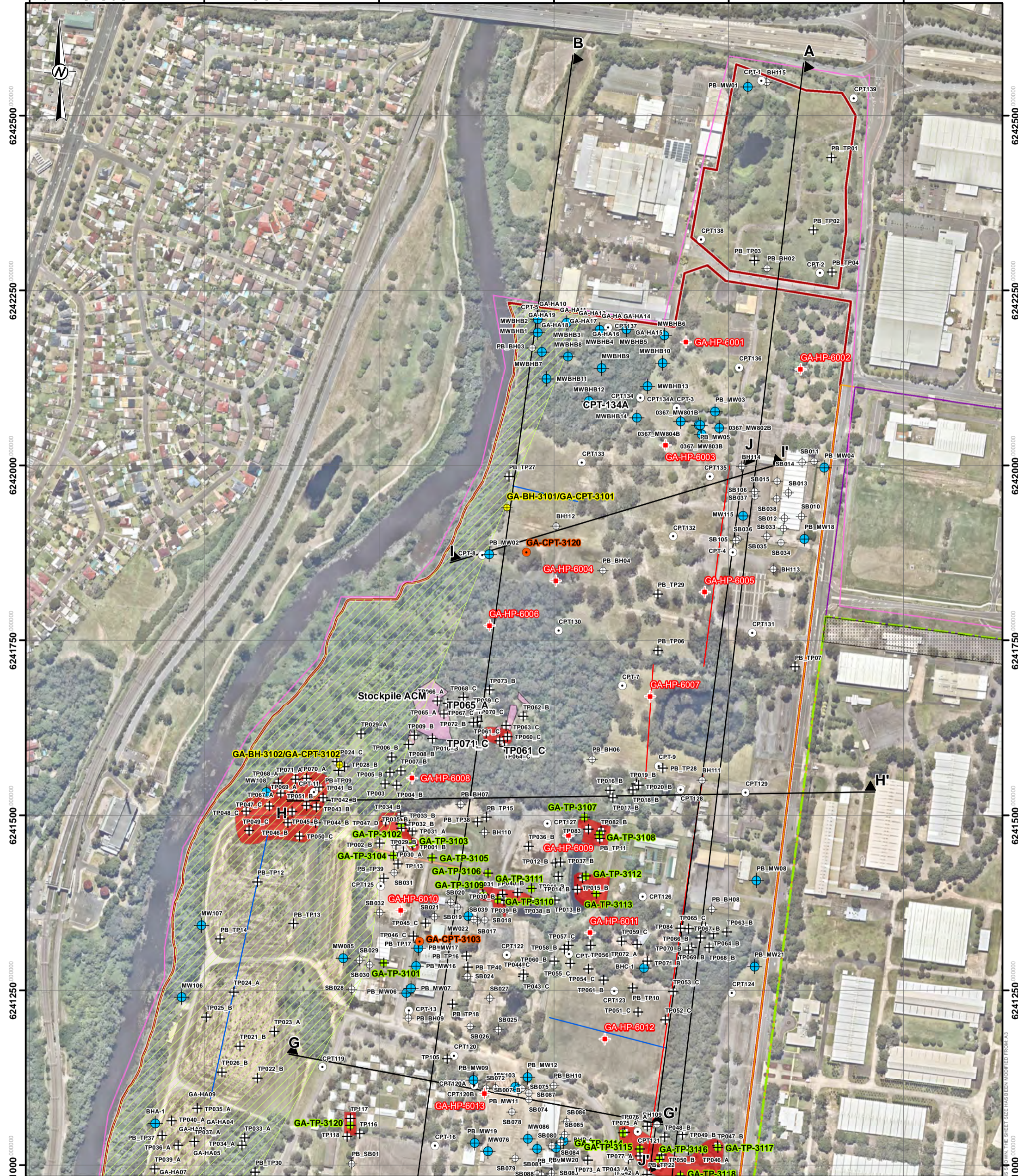
CONSULTANT
Golder Associates

YYYY-MM-DD	2016-09-02
PREPARED	KJS
DESIGNED	NRS
REVIEWED	NRS
APPROVED	BJF

PROJECT NO. 1416224 CONTROL 016 REV. 2

FIGURE A003

25mm IF THIS MEASUREMENT DOES NOT MATCH WHAT IS SHOWN, THE SHEET SIZE HAS BEEN COPIED FROM A3



LEGEND

- The Precinct (approximate)
- MIC Property West
- SIMTA Property
- Joint Defence
- Logistics Complex Moorebank
- Moorebank
- Moorebank Ave Realignment
- Conservation Area (approximate)
- Anthropogenic Fill (confirmed)
- Anthropogenic Fill (potential)
- Stockpile
- Investigation locations (Golder 2016)
- Borehole
- CPT
- Hand dug pit
- Test pit
- Previous Investigation locations
- Borehole
- CPT
- Groundwater Well
- Test Pit
- ETS seismic refraction line
- EarthTech seismic refraction line
- Section Lines

NOTE(S)
 1. Conservation Area digitised from Drawing PREC-RCG-AR-SKC-00002a (Masterplan Precinct, 09/06/2016 issue K)

REFERENCE(S)
 1. Property boundaries provided by Land and Property Information NSW

COPYRIGHT
 Aerial Photography Copyright
 1.NearMap Pty Ltd.

0 210 420
 1:5,000
 PROJECTION: GDA 1994 MGA Zone 56
 METRES

CLIENT
THE TACTICAL GROUP

PROJECT
MPW GEOTECHNICAL SITE INVESTIGATION

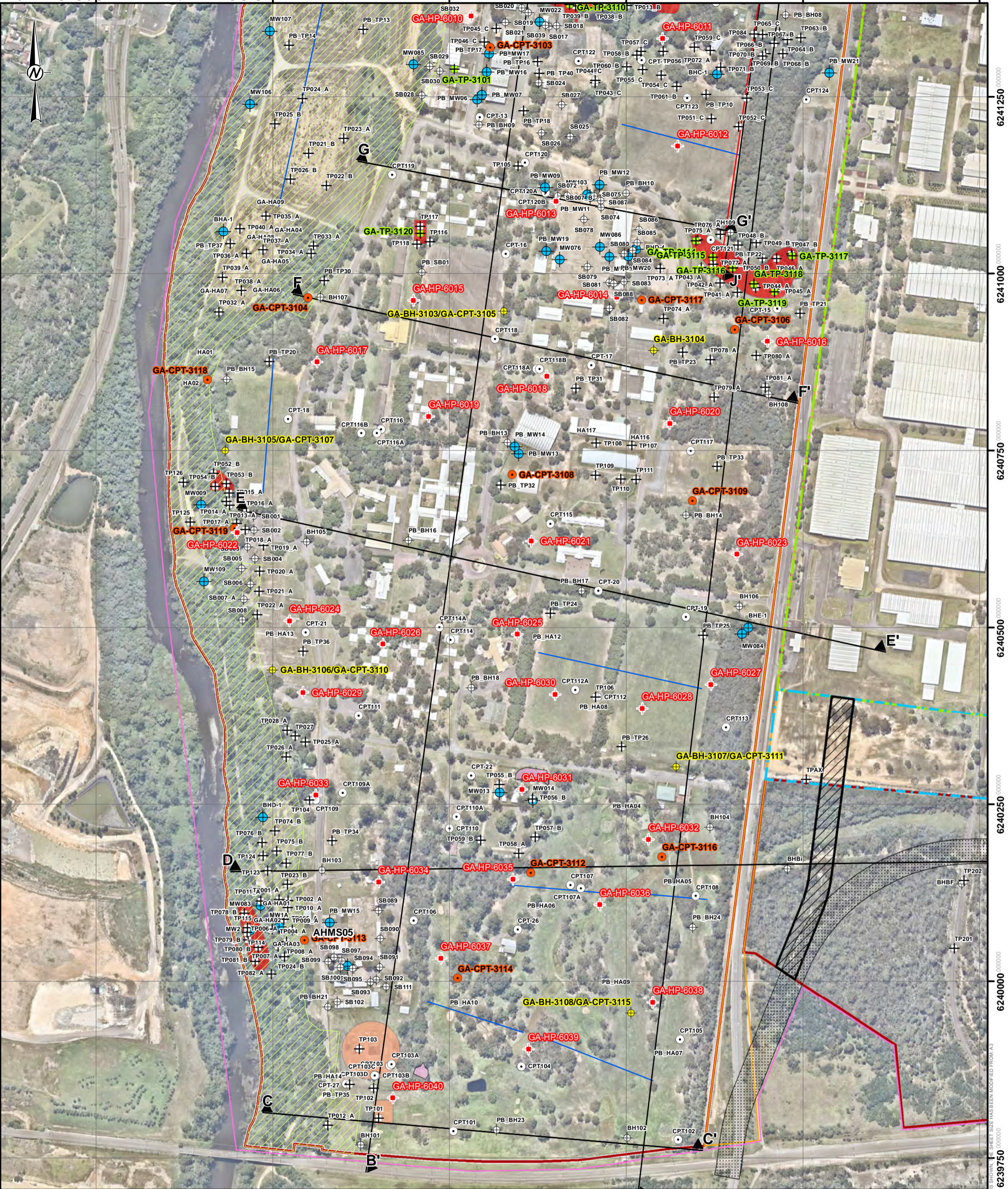
TITLE
PLAN OF INVESTIGATION LOCATIONS

CONSULTANT

YYYY-MM-DD	2016-09-02
PREPARED	KJS
DESIGNED	####
REVIEWED	JD
APPROVED	GVS

PROJECT NO. 1416224 CONTROL 016 REV. 2 FIGURE A003A

25mm IF THIS MEASUREMENT DOES NOT MATCH WHAT'S SHOWN THE SHEET SIZE HAS BEEN INCREASED FROM A3



LEGEND

- The Precinct (approximate)
- MIC Property West
- Bootland (MIC Property East)
- Butchers Knife
- SIMTA Property
- Moorebank
- Moorebank Ave Realignment
- Rail Access Corridor
- Conservation Area (approximate)
- Anthropogenic Fill (confirmed)
- Anthropogenic Fill (potential)
- Stockpile
- + Investigation locations (Golder 2016)
- + Borehole
- + CPT
- + Hand dug pit
- + Test pit
- + Previous Investigation locations
- + Borehole
- + CPT
- + Groundwater Well
- + Test Pit
- ETS seismic refraction line
- EarthTech seismic refraction line

NOTE(S)
1. Conservation Area digitised from Drawing PREC-RCG-AR-SKC-00002a (Masterplan Precinct, 09/06/2016 issue K)

REFERENCE(S)
1. Property boundaries provided by Land and Property Information NSW

COPYRIGHT
Aerial Photography Copyright
1. NearMap Pty Ltd.

0 210 420
1:5,000
PROJECTION: GDA 1994 MGA Zone 56
METRES

CLIENT
THE TACTICAL GROUP

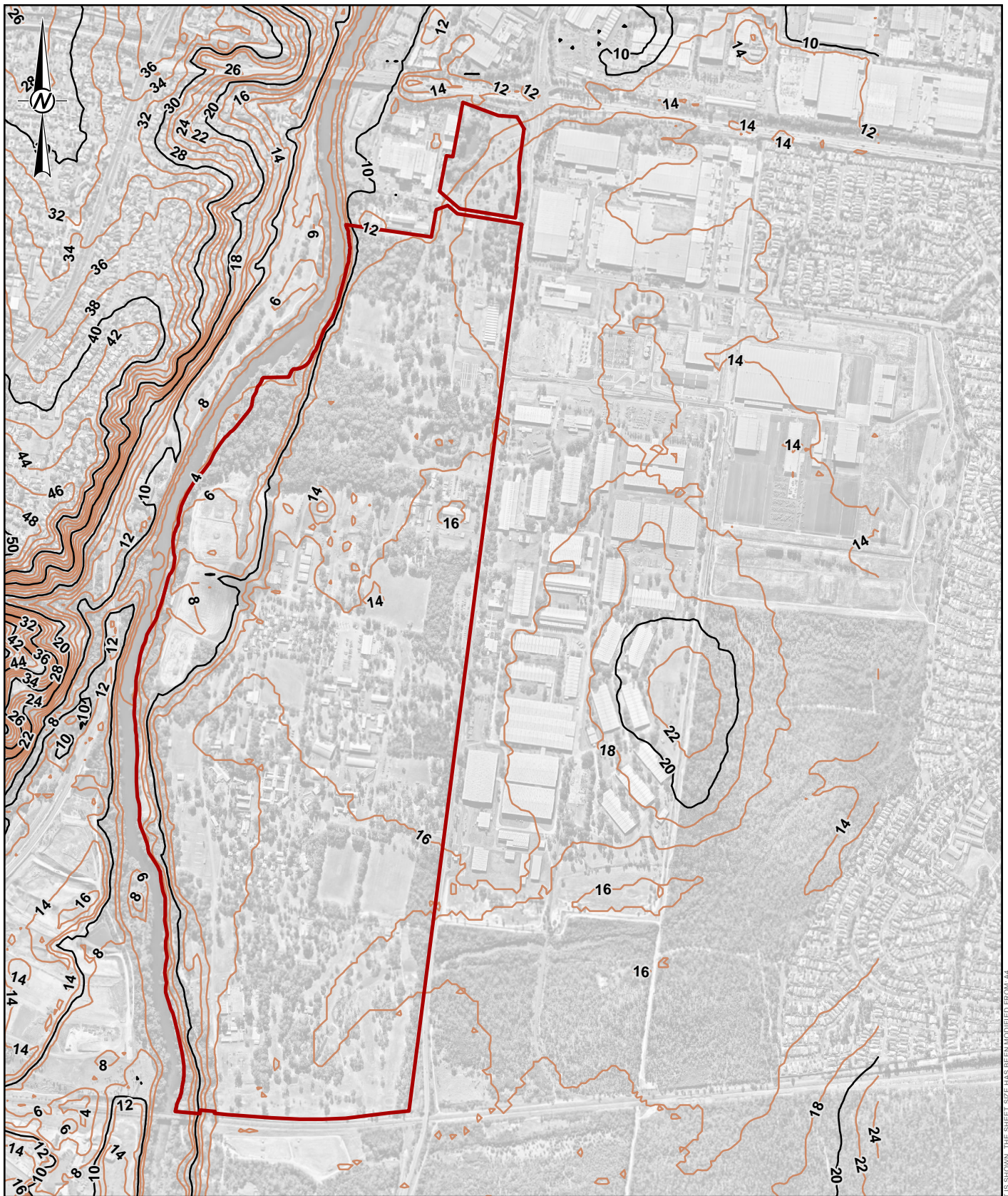
PROJECT
MPW GEOTECHNICAL SITE INVESTIGATION

TITLE
PLAN OF INVESTIGATION LOCATIONS

CONSULTANT
Golder Associates

YYYY-MM-DD	2016-09-02
PREPARED	KJS
DESIGNED	####
REVIEWED	JD
APPROVED	GVS

PROJECT NO. 1416224 CONTROL 016 REV. 2 FIGURE A003B



LEGEND

- Approximate Site Boundary
- Ground Surface Elevation (mAHD)**
- 10 m Contours
- 2 m Contours

NOTES

1. The Approximate Site Boundary represents the spatial extent of the Golder Geotechnical and Geochemical project.

REFERENCE

1. Aerial Image sourced from Nearmap.



REFERENCE SCALE: 1:15,000 (at A4)
 PROJECTION: GDA 1994 MGA Zone 56

CLIENT
 THE TACTICAL GROUP

PROJECT
 MPW GEOTECHNICAL SITE INVESTIGATION

TITLE
GEOTECHNICAL INTERPRETIVE REPORT: GROUND SURFACE LEVEL CONTOURS

CONSULTANT	YYYY-MM-DD	2016-09-02
	PREPARED	KJS
	DESIGN	-
	REVIEW	NRS
	APPROVED	NRS

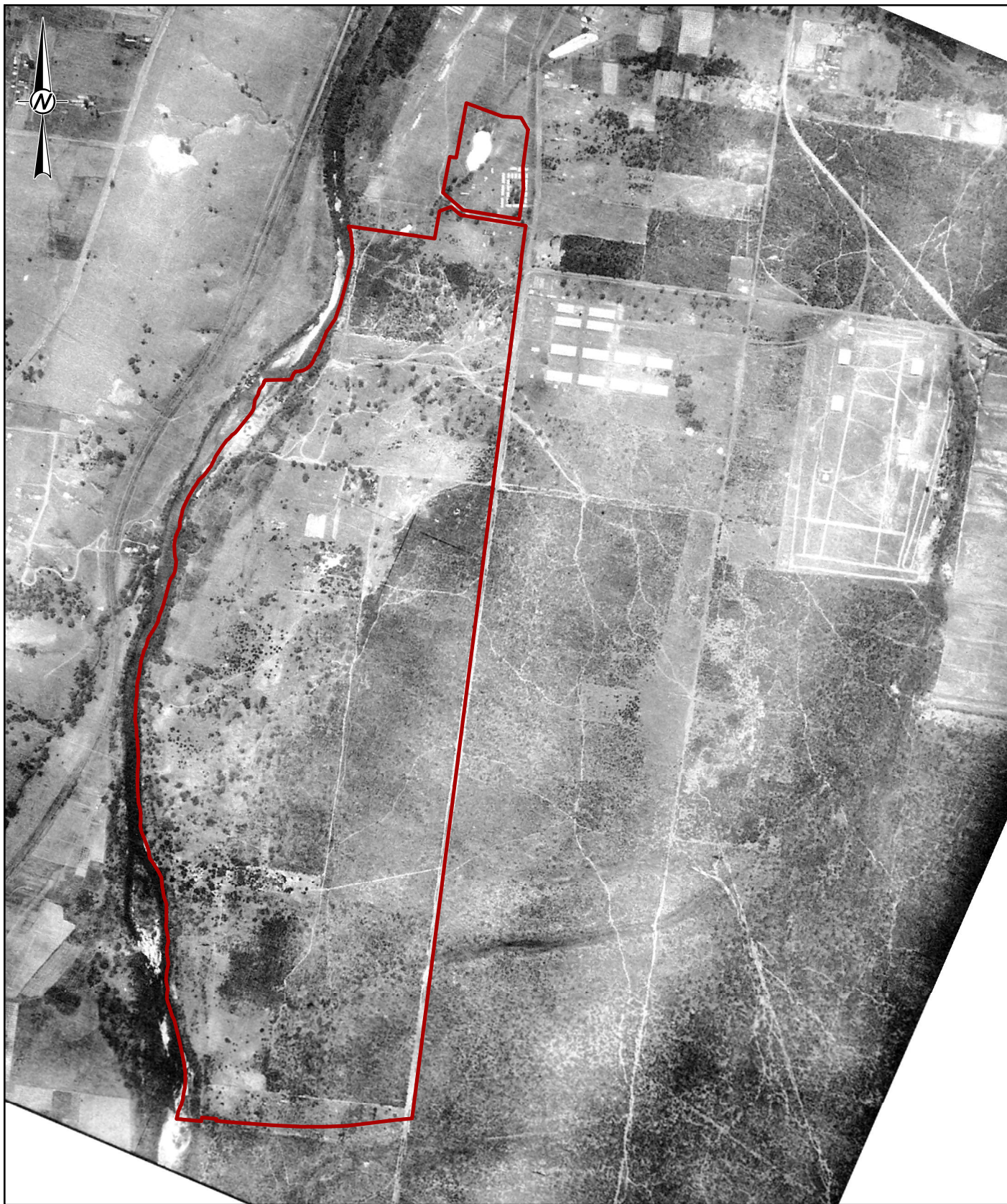


PROJECT 1416224 DOCUMENT 016 Rev. 2


FIGURE
A004

Path: J:\geo\2014\1416224_SIMTA_Stage_1_Moorebank\Technical Docs\GIS\Project\016_Rev\11416224_016_Rev_1_F004.mxd

25mm IF THIS MEASUREMENT DOES NOT MATCH WHAT IS SHOWN, THE SHEET SIZE HAS BEEN MODIFIED FROM A4



LEGEND

 Approximate Site Boundary

NOTES

1. The Approximate Site Boundary represents the spatial extent of the Golder Geotechnical and Geochemical project.

REFERENCE

1. Aerial Image provided by Parson Brinckerhoff



REFERENCE SCALE: 1:15,000 (at A4)
PROJECTION: GDA 1994 MGA Zone 56

CLIENT
THE TACTICAL GROUP

PROJECT
MPW GEOTECHNICAL SITE INVESTIGATION

TITLE
GEOTECHNICAL INTERPRETIVE REPORT: HISTORICAL AERIAL PHOTOGRAPH - 1930

CONSULTANT	YYYY-MM-DD	2016-09-02
	PREPARED	AOB
	DESIGN	-
	REVIEW	JDM
	APPROVED	JDM



PROJECT
1416224

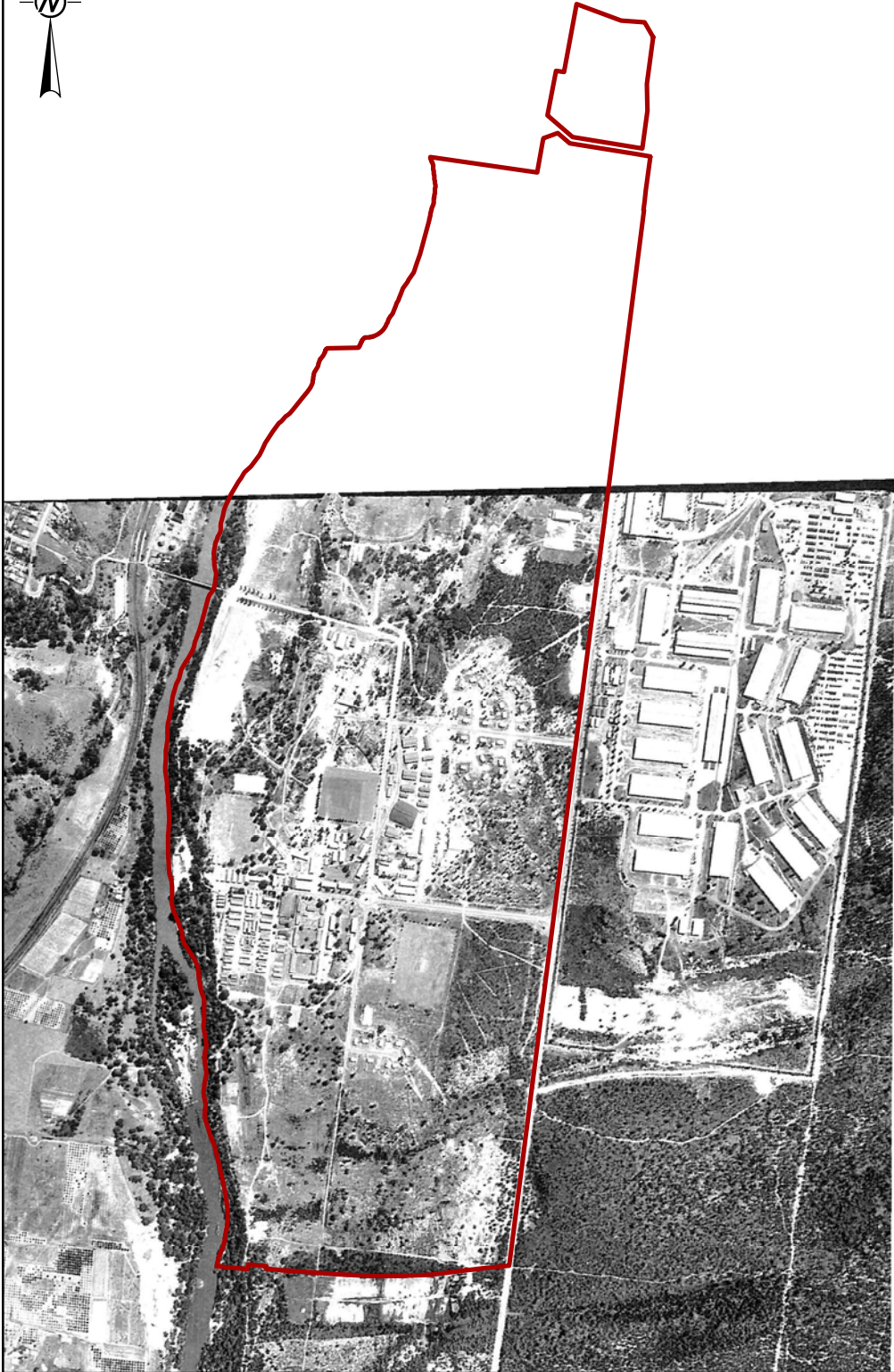
DOCUMENT
016

Rev.
2


FIGURE
A005

Path: J:\geo\2014\1416224_SIMTA_Stage_1_Moorebank\Technical Docs\GIS\Project\016_Rev\11416224_016_Rev_1_F005.mxd

28mm IF THIS MEASUREMENT DOES NOT MATCH WHAT IS SHOWN, THE SHEET SIZE HAS BEEN MODIFIED FROM A4



LEGEND

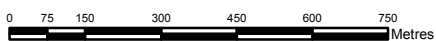
 Approximate Site Boundary

NOTES

1. The Approximate Site Boundary represents the spatial extent of the Golder Geotechnical and Geochemical project.

REFERENCE

1. Aerial Image provided by Parson Brinckerhoff



REFERENCE SCALE: 1:15,000 (at A4)
PROJECTION: GDA 1994 MGA Zone 56

CLIENT
THE TACTICAL GROUP

PROJECT
MPWGEO TECHNICAL SITE INVESTIGATION

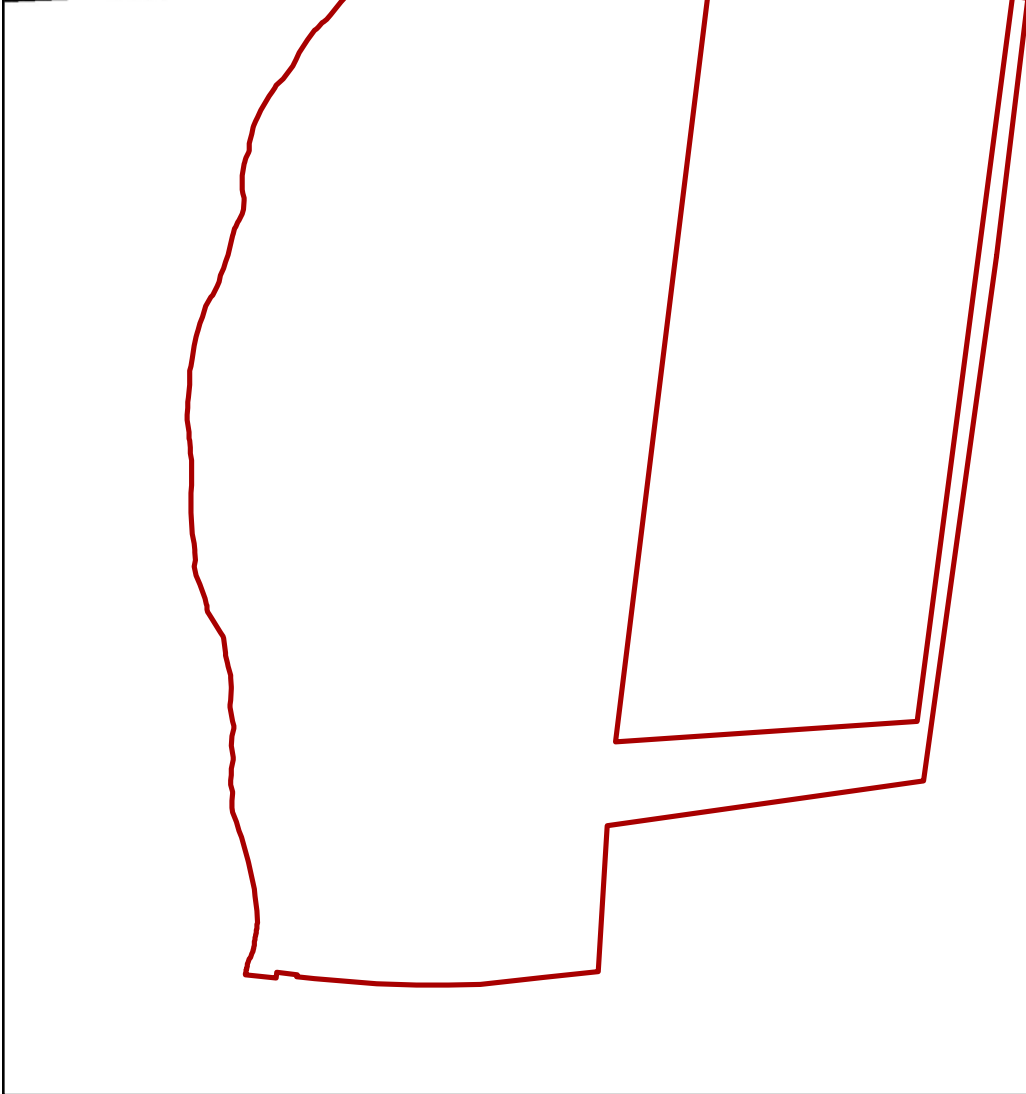
TITLE
**GEOTECHNICAL INTERPRETIVE REPORT: HISTORICAL
AERIAL PHOTOGRAPH - 1956**

CONSULTANT	YYYY-MM-DD	2016-09-02
	PREPARED	AOB
	DESIGN	-
	REVIEW	JDM
	APPROVED	JDM




PROJECT 1416224 DOCUMENT 016 Rev. 2

FIGURE
A006



LEGEND

 Approximate Site Boundary

NOTES

1. The Approximate Site Boundary represents the spatial extent of the Golder Geotechnical and Geochemical project.

REFERENCE

1. Aerial Image provided by Parson Brinckerhoff



REFERENCE SCALE: 1:15,000 (at A4)
PROJECTION: GDA 1994 MGA Zone 56

CLIENT
THE TACTICAL GROUP

PROJECT
MPW GEOTECHNICAL SITE INVESTIGATION

TITLE
**GEOTECHNICAL INTERPRETIVE REPORT: HISTORICAL
AERIAL PHOTOGRAPH - 1961**

CONSULTANT	YYYY-MM-DD	2016-09-02
	PREPARED	AOB
	DESIGN	-
	REVIEW	JDM
	APPROVED	JDM



PROJECT 1416224 DOCUMENT 016 Rev. 2

FIGURE
A007