

Appendix E

Cumulative SIMTA Scenario Model Results

Table E1 – 24-hour Average PM₁₀ Predictions – SIMTA Cumulative									
Receptor ID	Maximum Incremental 24-hour Average PM₁₀ Concentration (µg/m³)			Maximum Cumulative 24-hour Average PM₁₀ Concentration (µg/m³)			Number of Additional Exceedance Days Cumulative PM₁₀ >50µg/m³		
	Cumulative Scenario 1	Cumulative Scenario 2	Cumulative Scenario 3	Cumulative Scenario 1	Cumulative Scenario 2	Cumulative Scenario 3	Cumulative Scenario 1	Cumulative Scenario 2	Cumulative Scenario 3
1	0.4	0.3	0.2	98.8	98.7	98.7	0	0	0
2	0.5	0.4	0.3	98.8	98.8	98.7	0	0	0
3	0.7	0.5	0.4	98.9	98.8	98.8	0	0	0
4	0.7	0.6	0.4	99.1	98.9	98.8	0	0	0
5	0.5	0.4	0.3	98.7	98.7	98.6	0	0	0
6	0.8	0.6	0.5	98.8	98.7	98.7	0	0	0
7	0.2	0.2	0.1	98.7	98.6	98.6	0	0	0
8	0.2	0.1	0.1	98.6	98.6	98.6	0	0	0
9	0.2	0.2	0.2	98.6	98.6	98.6	0	0	0
10	0.2	0.1	0.1	98.6	98.6	98.6	0	0	0
11	0.4	0.3	0.3	98.8	98.7	98.7	0	0	0
12	0.5	0.4	0.4	98.8	98.8	98.8	0	0	0
13	0.5	0.4	0.4	98.8	98.8	98.8	0	0	0
14	0.6	0.5	0.4	98.9	98.8	98.8	0	0	0
15	0.2	0.2	0.1	98.6	98.6	98.6	0	0	0
16	0.1	0.1	0.1	98.6	98.6	98.6	0	0	0
17	0.5	0.4	0.4	98.8	98.8	98.7	0	0	0
18	0.2	0.2	0.1	98.7	98.6	98.6	0	0	0
19	0.2	0.2	0.2	98.6	98.6	98.6	0	0	0
20	0.2	0.1	0.1	98.6	98.6	98.6	0	0	0
21	0.1	0.1	0.1	98.6	98.6	98.6	0	0	0
22	0.4	0.3	0.3	98.7	98.7	98.7	0	0	0
23	0.2	0.2	0.2	98.7	98.7	98.6	0	0	0
24	0.4	0.3	0.2	98.7	98.6	98.6	0	0	0
25	0.7	0.6	0.4	98.8	98.7	98.7	0	0	0
26	0.3	0.3	0.2	98.6	98.6	98.6	0	0	0
27	0.5	0.4	0.3	98.8	98.7	98.7	0	0	0

Receptor ID	Maximum Incremental 24-hour Average PM ₁₀ Concentration (µg/m ³)			Maximum Cumulative 24-hour Average PM ₁₀ Concentration (µg/m ³)			Number of Additional Exceedance Days Cumulative PM ₁₀ >50µg/m ³		
	Cumulative Scenario 1	Cumulative Scenario 2	Cumulative Scenario 3	Cumulative Scenario 1	Cumulative Scenario 2	Cumulative Scenario 3	Cumulative Scenario 1	Cumulative Scenario 2	Cumulative Scenario 3
28	0.2	0.2	0.1	98.6	98.6	98.6	0	0	0
29	0.2	0.1	0.1	98.6	98.6	98.6	0	0	0
30	0.2	0.1	0.1	98.6	98.6	98.6	0	0	0
31	0.1	0.1	0.1	98.6	98.6	98.6	0	0	0
32	0.2	0.1	0.1	98.6	98.6	98.6	0	0	0
33	5.0	4.5	3.9	101.6	101.3	101.0	0	0	0
34	0.2	0.1	0.1	98.6	98.6	98.6	0	0	0
35	0.6	0.6	0.5	98.9	98.9	98.8	0	0	0
36	0.2	0.2	0.1	98.6	98.6	98.6	0	0	0
37	0.3	0.3	0.2	98.7	98.7	98.7	1	1	0
38	0.8	0.6	0.4	99.1	98.9	98.8	0	0	0
Boundary Maximum	5.5	4.8	4.2	102.0	101.6	101.2	1	1	0

Note: Grey shaded cell indicates exceedance of applicable criterion

Note: Maximum ambient 24-hour average PM₁₀ background concentration in exceedance of criterion due to bushfire event

Table E2 – Annual Average PM ₁₀ Predictions – SIMTA Cumulative						
Receptor ID	Incremental Annual Average PM ₁₀ Concentration (µg/m ³)			Cumulative Annual Average PM ₁₀ Concentration (µg/m ³)		
	Cumulative Scenario 1	Cumulative Scenario 2	Cumulative Scenario 3	Cumulative Scenario 1	Cumulative Scenario 2	Cumulative Scenario 3
1	0.2	0.2	0.1	20.6	20.6	20.5
2	0.2	0.2	0.1	20.6	20.6	20.5
3	0.3	0.3	0.2	20.7	20.7	20.6
4	0.3	0.2	0.2	20.7	20.6	20.6
5	0.1	0.1	0.1	20.5	20.5	20.5
6	0.1	0.1	0.1	20.5	20.5	20.5
7	0.1	0.1	0.1	20.5	20.5	20.5
8	0.1	<0.1	<0.1	20.5	20.4	20.4
9	0.1	0.1	<0.1	20.5	20.5	20.4
10	0.1	0.1	0.1	20.5	20.5	20.5
11	0.2	0.1	0.1	20.6	20.5	20.5
12	0.2	0.2	0.2	20.6	20.6	20.6
13	0.2	0.2	0.2	20.6	20.6	20.6
14	0.3	0.2	0.2	20.7	20.6	20.6
15	0.1	0.1	<0.1	20.5	20.5	20.4
16	<0.1	<0.1	<0.1	20.4	20.4	20.4
17	0.2	0.2	0.2	20.6	20.6	20.6
18	0.1	0.1	0.1	20.5	20.5	20.5
19	<0.1	<0.1	<0.1	20.4	20.4	20.4
20	<0.1	<0.1	<0.1	20.4	20.4	20.4
21	<0.1	<0.1	<0.1	20.4	20.4	20.4
22	0.2	0.1	0.1	20.6	20.5	20.5
23	0.1	0.1	0.1	20.5	20.5	20.5
24	0.1	<0.1	<0.1	20.5	20.4	20.4
25	0.1	0.1	0.1	20.5	20.5	20.5
26	<0.1	<0.1	<0.1	20.4	20.4	20.4
27	0.1	0.1	0.1	20.5	20.5	20.5

Table E2 – Annual Average PM₁₀ Predictions – SIMTA Cumulative						
Receptor ID	Incremental Annual Average PM₁₀ Concentration (µg/m³)			Cumulative Annual Average PM₁₀ Concentration (µg/m³)		
	Cumulative Scenario 1	Cumulative Scenario 2	Cumulative Scenario 3	Cumulative Scenario 1	Cumulative Scenario 2	Cumulative Scenario 3
28	<0.1	<0.1	<0.1	20.4	20.4	20.4
29	<0.1	<0.1	<0.1	20.4	20.4	20.4
30	0.1	0.1	<0.1	20.5	20.5	20.4
31	<0.1	<0.1	<0.1	20.4	20.4	20.4
32	<0.1	<0.1	<0.1	20.4	20.4	20.4
33	2.7	2.4	2.1	23.1	22.8	22.5
34	0.1	0.1	<0.1	20.5	20.5	20.4
35	0.3	0.3	0.2	20.7	20.7	20.6
36	<0.1	<0.1	<0.1	20.4	20.4	20.4
37	0.1	0.1	0.1	20.5	20.5	20.5
38	0.4	0.3	0.2	20.8	20.7	20.6
Boundary Maximum	2.9	2.5	2.2	23.3	22.9	22.6

Table E3 – 24-hour Average PM_{2.5} Predictions – SIMTA Cumulative									
Receptor ID	Maximum Incremental 24-hour Average PM_{2.5} Concentration (µg/m³)			Maximum Cumulative 24-hour Average PM_{2.5} Concentration (µg/m³)			Number of Additional Exceedance Days Cumulative PM_{2.5} >25µg/m³		
	Cumulative Scenario 1	Cumulative Scenario 2	Cumulative Scenario 3	Cumulative Scenario 1	Cumulative Scenario 2	Cumulative Scenario 3	Cumulative Scenario 1	Cumulative Scenario 2	Cumulative Scenario 3
1	0.4	0.3	0.2	74.1	74.0	74.0	0	0	0
2	0.5	0.4	0.3	74.1	74.1	74.0	0	0	0
3	0.7	0.5	0.4	74.2	74.1	74.1	0	0	0
4	0.7	0.5	0.4	74.3	74.2	74.1	0	0	0
5	0.5	0.4	0.3	74.0	74.0	73.9	0	0	0
6	0.8	0.6	0.4	74.1	74.0	74.0	0	0	0
7	0.2	0.1	0.1	74.0	73.9	73.9	0	0	0
8	0.2	0.1	0.1	73.9	73.9	73.9	0	0	0
9	0.2	0.2	0.2	73.9	73.9	73.9	0	0	0
10	0.2	0.1	0.1	73.9	73.9	73.9	0	0	0
11	0.4	0.3	0.3	74.0	74.0	74.0	0	0	0
12	0.5	0.4	0.4	74.1	74.1	74.1	0	0	0
13	0.5	0.4	0.4	74.1	74.1	74.0	0	0	0
14	0.6	0.5	0.4	74.2	74.1	74.1	0	0	0
15	0.2	0.2	0.1	73.9	73.9	73.9	0	0	0
16	0.1	0.1	0.1	73.9	73.9	73.9	0	0	0
17	0.5	0.4	0.4	74.1	74.1	74.0	0	0	0
18	0.2	0.2	0.1	74.0	73.9	73.9	0	0	0
19	0.2	0.2	0.2	73.9	73.9	73.9	0	0	0
20	0.2	0.1	0.1	73.9	73.9	73.9	0	0	0
21	0.1	0.1	0.1	73.9	73.9	73.9	0	0	0
22	0.3	0.3	0.3	74.0	74.0	74.0	0	0	0
23	0.2	0.2	0.2	74.0	74.0	73.9	0	0	0
24	0.4	0.3	0.2	73.9	73.9	73.9	0	0	0
25	0.7	0.6	0.4	74.1	74.0	74.0	0	0	0
26	0.3	0.2	0.2	73.9	73.9	73.9	0	0	0
27	0.5	0.4	0.3	74.1	74.0	74.0	0	0	0

Table E3 – 24-hour Average PM_{2.5} Predictions – SIMTA Cumulative									
Receptor ID	Maximum Incremental 24-hour Average PM_{2.5} Concentration (µg/m³)			Maximum Cumulative 24-hour Average PM_{2.5} Concentration (µg/m³)			Number of Additional Exceedance Days Cumulative PM_{2.5} >25µg/m³		
	Cumulative Scenario 1	Cumulative Scenario 2	Cumulative Scenario 3	Cumulative Scenario 1	Cumulative Scenario 2	Cumulative Scenario 3	Cumulative Scenario 1	Cumulative Scenario 2	Cumulative Scenario 3
28	0.2	0.2	0.1	73.9	73.9	73.9	0	0	0
29	0.2	0.1	0.1	73.9	73.9	73.9	0	0	0
30	0.1	0.1	0.1	73.9	73.9	73.9	0	0	0
31	0.1	0.1	0.1	73.9	73.9	73.9	0	0	0
32	0.1	0.1	0.1	73.9	73.9	73.9	0	0	0
33	4.9	4.4	3.8	76.9	76.5	76.2	5	4	3
34	0.1	0.1	0.1	73.9	73.9	73.9	0	0	0
35	0.6	0.5	0.5	74.2	74.2	74.1	0	0	0
36	0.2	0.2	0.1	73.9	73.9	73.9	0	0	0
37	0.3	0.3	0.2	74.0	74.0	74.0	0	0	0
38	0.8	0.6	0.4	74.3	74.2	74.1	0	0	0
Boundary Maximum	5.3	4.6	4.1	77.2	76.8	76.4	6	5	3

Note: Grey shaded cell indicates exceedance of applicable criterion

Note: Maximum ambient 24-hour average PM_{2.5} background concentration in exceedance of criterion due to bushfire event

Table E4 – Annual Average PM _{2.5} Predictions – SIMTA Cumulative						
Receptor ID	Incremental Annual Average PM _{2.5} Concentration (µg/m ³)			Cumulative Annual Average PM _{2.5} Concentration (µg/m ³)		
	Cumulative Scenario 1	Cumulative Scenario 2	Cumulative Scenario 3	Cumulative Scenario 1	Cumulative Scenario 2	Cumulative Scenario 3
1	0.2	0.1	0.1	7.8	7.7	7.7
2	0.2	0.2	0.1	7.8	7.8	7.7
3	0.3	0.2	0.2	7.9	7.8	7.8
4	0.3	0.2	0.2	7.9	7.8	7.8
5	0.1	0.1	0.1	7.7	7.7	7.7
6	0.1	0.1	0.1	7.7	7.7	7.7
7	0.1	0.1	0.1	7.7	7.7	7.7
8	0.1	<0.1	<0.1	7.7	7.6	7.6
9	0.1	0.1	<0.1	7.7	7.7	7.6
10	0.1	0.1	0.1	7.7	7.7	7.7
11	0.2	0.1	0.1	7.8	7.7	7.7
12	0.2	0.2	0.2	7.8	7.8	7.8
13	0.2	0.2	0.2	7.8	7.8	7.8
14	0.3	0.2	0.2	7.9	7.8	7.8
15	0.1	0.1	<0.1	7.7	7.7	7.6
16	<0.1	<0.1	<0.1	7.6	7.6	7.6
17	0.2	0.2	0.2	7.8	7.8	7.8
18	0.1	0.1	0.1	7.7	7.7	7.7
19	<0.1	<0.1	<0.1	7.6	7.6	7.6
20	<0.1	<0.1	<0.1	7.6	7.6	7.6
21	<0.1	<0.1	<0.1	7.6	7.6	7.6
22	0.2	0.1	0.1	7.8	7.7	7.7
23	0.1	0.1	0.1	7.7	7.7	7.7
24	<0.1	<0.1	<0.1	7.6	7.6	7.6
25	0.1	0.1	0.1	7.7	7.7	7.7
26	<0.1	<0.1	<0.1	7.6	7.6	7.6
27	0.1	0.1	0.1	7.7	7.7	7.7

Table E4 – Annual Average PM _{2.5} Predictions – SIMTA Cumulative						
Receptor ID	Incremental Annual Average PM _{2.5} Concentration (µg/m ³)			Cumulative Annual Average PM _{2.5} Concentration (µg/m ³)		
	Cumulative Scenario 1	Cumulative Scenario 2	Cumulative Scenario 3	Cumulative Scenario 1	Cumulative Scenario 2	Cumulative Scenario 3
28	<0.1	<0.1	<0.1	7.6	7.6	7.6
29	<0.1	<0.1	<0.1	7.6	7.6	7.6
30	0.1	0.1	<0.1	7.7	7.7	7.6
31	<0.1	<0.1	<0.1	7.6	7.6	7.6
32	<0.1	<0.1	<0.1	7.6	7.6	7.6
33	2.6	2.3	2.0	10.2	9.9	9.6
34	0.1	0.1	<0.1	7.7	7.7	7.6
35	0.3	0.3	0.2	7.9	7.9	7.8
36	<0.1	<0.1	<0.1	7.6	7.6	7.6
37	0.1	0.1	0.1	7.7	7.7	7.7
38	0.4	0.3	0.2	8.0	7.9	7.8
Boundary Maximum	2.8	2.5	2.2	10.4	10.1	9.8

Table E5 – Incremental 1-hour Average NO_x and Incremental and Cumulative 1-hour Average NO₂ Predictions – SIMTA Cumulative									
Receptor ID	Maximum Incremental 1-hour Average NO_x Concentration (µg/m³)			Maximum Incremental 1-hour Average NO₂ Concentration (µg/m³)			Maximum Cumulative 1-hour Average NO₂ Concentration (µg/m³)		
	Cumulative Scenario 1	Cumulative Scenario 2	Cumulative Scenario 3	Cumulative Scenario 1	Cumulative Scenario 2	Cumulative Scenario 3	Cumulative Scenario 1	Cumulative Scenario 2	Cumulative Scenario 3
1	32.3	22.7	14.6	26.6	19.5	14.6	114.8	114.8	114.8
2	38.9	28.2	18.4	32.0	24.7	16.2	118.0	114.8	114.8
3	66.4	47.4	29.4	61.6	46.6	29.4	130.1	117.9	114.8
4	87.4	63.2	40.3	74.1	55.1	38.0	117.3	114.8	114.8
5	44.3	32.9	22.1	41.3	30.2	20.9	114.8	114.8	114.8
6	57.6	41.2	25.7	49.3	35.8	25.7	114.8	114.8	114.8
7	32.3	24.1	16.4	25.8	24.1	16.4	114.8	114.8	114.8
8	24.6	17.7	11.6	24.6	17.7	11.6	114.8	114.8	114.8
9	34.9	25.1	16.1	33.2	24.3	16.1	114.8	114.8	114.8
10	12.4	9.4	6.8	12.4	9.4	6.8	114.8	114.8	114.8
11	25.7	19.5	13.8	18.1	13.9	10.2	114.8	114.8	114.8
12	28.7	21.1	14.1	17.6	13.8	10.4	114.8	114.8	114.8
13	26.3	19.3	12.7	16.5	12.9	9.7	114.8	114.8	114.8
14	27.3	20.7	16.7	24.0	18.2	13.0	114.8	114.8	114.8
15	30.8	22.1	14.1	30.8	22.1	14.1	114.8	114.8	114.8
16	25.6	19.2	13.4	25.5	18.5	13.4	114.8	114.8	114.8
17	34.1	26.0	18.7	22.6	17.2	12.2	114.8	114.8	114.8
18	29.9	21.6	13.9	27.4	19.7	12.7	114.8	114.8	114.8
19	40.1	28.8	18.3	39.3	28.8	18.3	114.8	114.8	114.8
20	23.5	17.0	11.5	23.5	17.0	11.5	114.8	114.8	114.8
21	24.4	18.0	12.3	23.2	16.9	12.3	114.8	114.8	114.8
22	30.6	22.5	15.0	14.6	11.3	8.8	114.8	114.8	114.8
23	24.4	18.1	12.3	13.4	10.7	7.9	114.8	114.8	114.8
24	37.9	27.5	18.2	37.5	27.5	18.2	114.8	114.8	114.8
25	50.0	35.8	24.2	48.3	35.5	23.8	114.8	114.8	114.8
26	37.0	27.1	17.8	35.5	25.9	16.9	114.8	114.8	114.8
27	71.6	52.9	35.2	61.8	50.3	34.9	114.8	114.8	114.8

Table E5 – Incremental 1-hour Average NO_x and Incremental and Cumulative 1-hour Average NO₂ Predictions – SIMTA Cumulative									
Receptor ID	Maximum Incremental 1-hour Average NO_x Concentration (µg/m³)			Maximum Incremental 1-hour Average NO₂ Concentration (µg/m³)			Maximum Cumulative 1-hour Average NO₂ Concentration (µg/m³)		
	Cumulative Scenario 1	Cumulative Scenario 2	Cumulative Scenario 3	Cumulative Scenario 1	Cumulative Scenario 2	Cumulative Scenario 3	Cumulative Scenario 1	Cumulative Scenario 2	Cumulative Scenario 3
28	36.4	26.6	18.1	34.1	26.6	18.1	114.8	114.8	114.8
29	29.6	21.9	14.7	28.4	21.9	14.7	114.8	114.8	114.8
30	18.9	15.0	11.5	18.3	15.0	11.5	114.8	114.8	114.8
31	12.4	9.1	6.0	12.4	9.1	6.0	114.8	114.8	114.8
32	17.9	13.9	10.2	16.0	13.7	10.2	114.8	114.8	114.8
33	230.9	192.8	158.6	99.0	80.9	74.7	142.0	138.8	136.0
34	25.8	20.2	15.2	25.1	20.2	15.2	114.8	114.8	114.8
35	27.6	20.0	13.7	21.2	16.4	12.1	114.8	114.8	114.8
36	33.5	24.1	15.7	32.6	23.6	15.7	114.8	114.8	114.8
37	20.6	15.1	9.9	20.5	15.0	9.9	114.8	114.8	114.8
38	54.2	39.0	25.0	45.7	36.3	23.3	120.2	119.2	114.8
Boundary Maximum	274.9	223.3	179.9	104.8	102.6	84.9	146.5	142.5	139.1

Note: NO₂ concentrations converted from NO_x predictions using the OLM approach

Table E6 – Incremental Annual Average NO _x and Incremental and Cumulative Annual Average NO ₂ Predictions – SIMTA Cumulative									
Receptor ID	Incremental Annual Average NO _x Concentration (µg/m ³)			Incremental Annual Average NO ₂ Concentration (µg/m ³)			Incremental Annual Average NO ₂ Concentration (µg/m ³)		
	Cumulative Scenario 1	Cumulative Scenario 2	Cumulative Scenario 3	Cumulative Scenario 1	Cumulative Scenario 2	Cumulative Scenario 3	Cumulative Scenario 1	Cumulative Scenario 2	Cumulative Scenario 3
1	4.9	3.6	2.5	2.9	2.3	1.6	25.6	25.0	24.3
2	6.7	4.9	3.3	3.9	3.0	2.1	26.6	25.7	24.8
3	9.2	6.7	4.3	5.1	3.9	2.7	27.8	26.6	25.4
4	8.7	6.2	4.0	4.7	3.7	2.6	27.4	26.4	25.3
5	2.3	1.7	1.2	1.7	1.3	0.9	24.4	24.0	23.6
6	3.3	2.5	1.7	2.3	1.8	1.3	25.0	24.5	24.0
7	2.6	2.0	1.4	1.7	1.4	1.0	24.4	24.0	23.7
8	1.5	1.1	0.8	1.0	0.8	0.6	23.7	23.5	23.3
9	1.7	1.3	0.9	1.1	0.9	0.7	23.8	23.6	23.4
10	2.2	1.7	1.2	1.4	1.1	0.9	24.1	23.8	23.6
11	3.5	2.8	2.2	2.2	1.8	1.4	24.9	24.5	24.1
12	4.2	3.3	2.5	2.5	2.0	1.6	25.2	24.7	24.3
13	4.2	3.3	2.5	2.5	2.0	1.6	25.2	24.7	24.3
14	5.9	4.5	3.2	3.5	2.8	2.1	26.2	25.5	24.8
15	2.0	1.5	1.1	1.3	1.1	0.8	24.0	23.7	23.5
16	0.5	0.4	0.3	0.4	0.3	0.2	23.1	23.0	22.9
17	4.3	3.4	2.6	2.6	2.1	1.7	25.2	24.8	24.4
18	2.4	1.9	1.3	1.6	1.3	1.0	24.3	24.0	23.6
19	1.0	0.7	0.5	0.7	0.5	0.4	23.4	23.2	23.1
20	1.1	0.8	0.6	0.8	0.6	0.4	23.4	23.3	23.1
21	0.9	0.7	0.5	0.7	0.5	0.4	23.4	23.2	23.1
22	3.3	2.6	1.9	2.0	1.6	1.3	24.7	24.3	24.0
23	2.3	1.8	1.3	1.5	1.2	0.9	24.1	23.9	23.6
24	1.3	1.0	0.7	1.0	0.7	0.5	23.7	23.4	23.2
25	3.2	2.4	1.6	2.3	1.8	1.3	25.0	24.5	24.0
26	1.2	0.9	0.6	0.9	0.7	0.5	23.6	23.4	23.2
27	3.5	2.6	1.7	2.3	1.8	1.3	25.0	24.5	24.0

Table E6 – Incremental Annual Average NO_x and Incremental and Cumulative Annual Average NO₂ Predictions – SIMTA Cumulative									
Receptor ID	Incremental Annual Average NO_x Concentration (µg/m³)			Incremental Annual Average NO₂ Concentration (µg/m³)			Incremental Annual Average NO₂ Concentration (µg/m³)		
	Cumulative Scenario 1	Cumulative Scenario 2	Cumulative Scenario 3	Cumulative Scenario 1	Cumulative Scenario 2	Cumulative Scenario 3	Cumulative Scenario 1	Cumulative Scenario 2	Cumulative Scenario 3
28	1.3	0.9	0.6	0.9	0.7	0.5	23.6	23.4	23.2
29	1.2	0.9	0.6	0.9	0.7	0.5	23.6	23.4	23.2
30	1.6	1.2	0.8	1.1	0.9	0.6	23.8	23.6	23.3
31	1.0	0.8	0.5	0.8	0.6	0.4	23.5	23.3	23.1
32	1.0	0.7	0.5	0.7	0.5	0.4	23.4	23.2	23.1
33	55.4	45.0	35.6	17.3	15.2	13.3	40.0	37.9	36.0
34	1.8	1.4	1.0	1.2	1.0	0.7	23.9	23.7	23.4
35	5.5	4.3	3.2	3.2	2.6	2.0	25.9	25.3	24.7
36	1.1	0.8	0.6	0.8	0.6	0.5	23.5	23.3	23.2
37	2.9	2.2	1.6	1.9	1.5	1.1	24.6	24.2	23.8
38	11.6	8.3	5.3	6.2	4.8	3.2	28.9	27.4	25.9
Boundary Maximum	67.3	54.7	44.2	20.0	17.7	15.6	42.7	40.4	38.3

Note: NO₂ concentrations converted from NO_x predictions using the OLM approach

Appendix F

Cumulative SIMTA Scenario Incremental Pollutant Isopleths







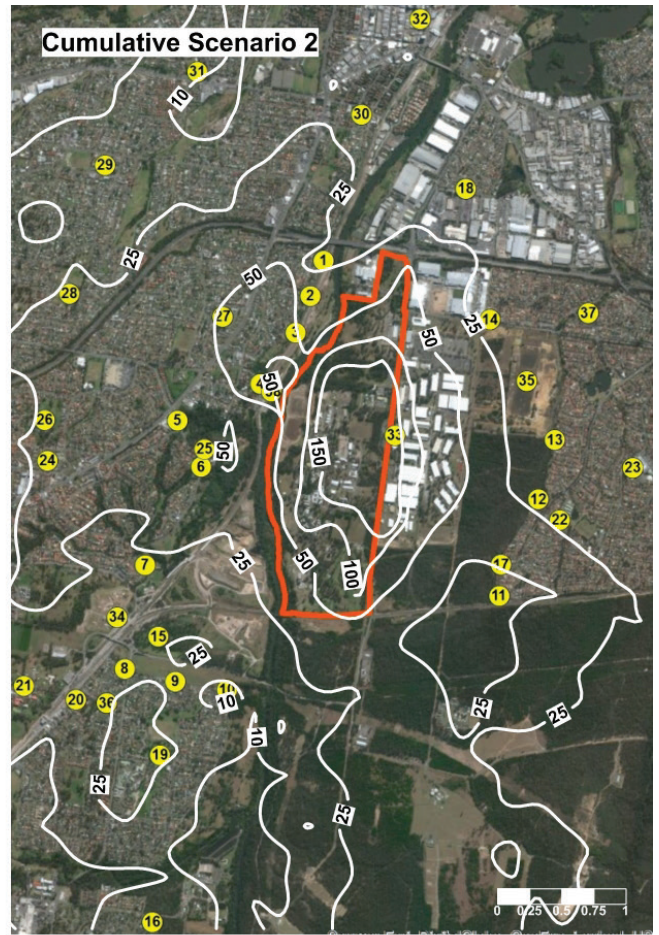
Maximum Predicted 24-hour Average PM_{2.5} Concentrations (µg/m³) – SIMTA Cumulative

FIGURE
F3



Predicted Annual Average PM_{2.5} Concentrations (µg/m³) – SIMTA Cumulative

FIGURE
F4



Maximum Predicted 1-hour Average NO_x Concentrations (µg/m³) – SIMTA Cumulative

FIGURE
F5



Predicted Annual Average NO_x Concentrations (µg/m³) – SIMTA Cumulative

FIGURE F6